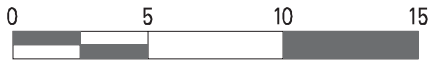
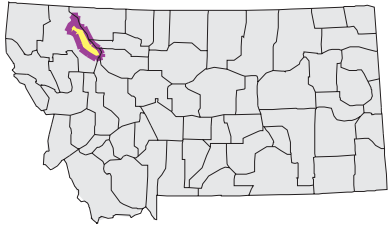
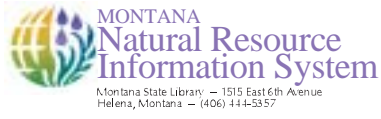


# MIDDLE FORK FLATHEAD Watershed

## National Land Cover Database



Mapscale 1: 450000 Scale in miles:



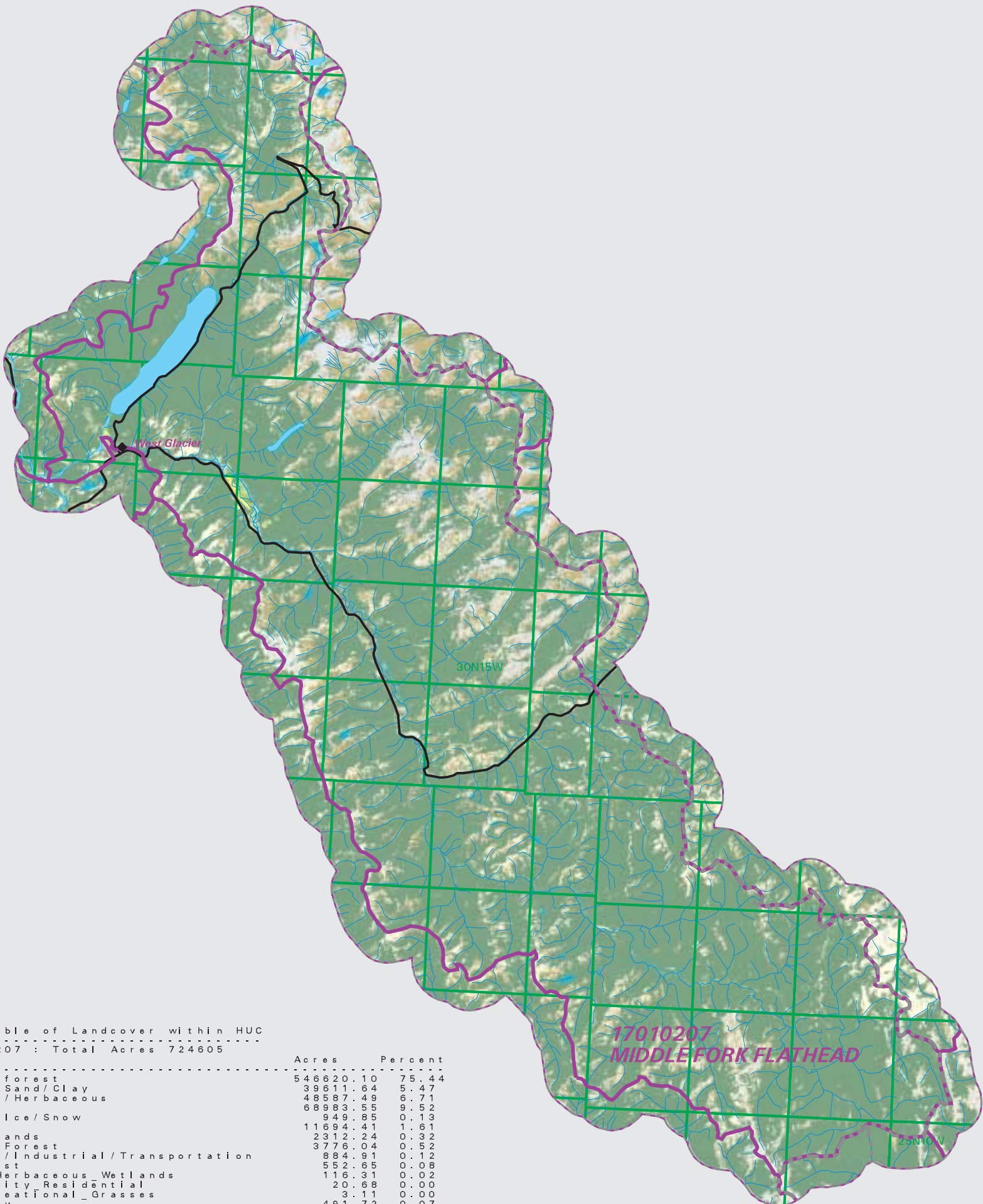
Date created: October 29, 2003

Map Request: 04MSL0001 - 17010207 - NLCD

- County Border
- Highway
- Public Land Survey System Townships
- Fourth Code Watersheds
- Open Water
- Perennial Ice/Snow
- Low Intensity Residential
- High Intensity Residential
- Commercial/Industrial Transportation
- Bare Rock/Sand/Clay
- Transitional
- Deciduous Forest
- Evergreen Forest
- Mixed Forest
- Shrubland
- Grasslands/Herbaceous
- Pasture/Hay
- Row Crops
- Small Grains
- Fallow
- Urban/Recreational Grasses
- Woody Wetlands
- Emergent Herbaceous Wetlands

SOURCE:  
US Geological Survey NLCD files.  
Data from 30-meter Landsat thematic mapper (TM), 1986-1995.  
This data is intended to display land use patterns, rather than identification of the land use at any particular point.  
The source data being in raster format, no attempt has been made to summarize the types or limit the legend to the displayed data.

This map is to be used as a primary reference source and is not intended for use in site - specific planning. This is public information and may be interpreted by organizations, agencies, units of government, or others, based on needs; however, they are responsible for the appropriate application. Federal, State, or local regulatory bodies are not to reassign to the Natural Resource Information System any authority for the decisions they make.



Summary Table of Landcover within HUC		
HUC 17010207 : Total Acres 724605		
Owner	Acres	Percent
Evergreen forest	546620.10	75.44
Bare_Rock/Sand/Clay	39611.64	5.47
Grasslands/Herbaceous	48587.49	6.71
Shrubland	68983.55	9.52
Perennial_Ice/Snow	949.85	0.13
Open_Water	11694.41	1.61
Woody_Wetlands	2312.24	0.32
Deciduous Forest	3776.04	0.52
Commercial/Industrial/Transportation	884.91	0.12
Mixed Forest	552.65	0.08
Emergent_Herbaceous_Wetlands	116.31	0.02
Low_Intensity_Residential	20.68	0.00
Urban/Recreational_Grasses	3.11	0.00
Pasture/Hay	491.72	0.07
	0.22	0.00
Acres =	724604.93	