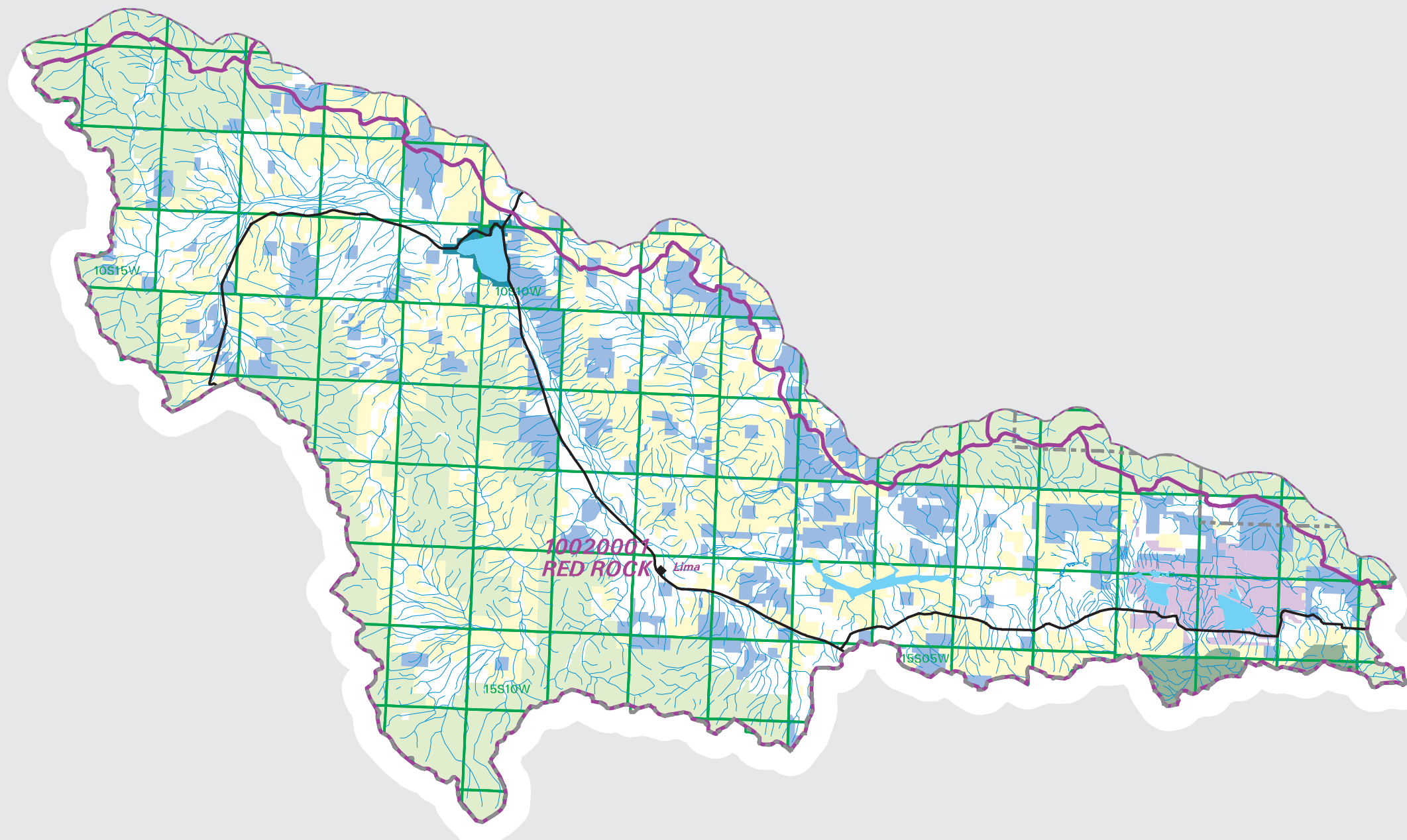


# RED ROCK Watershed Ownership

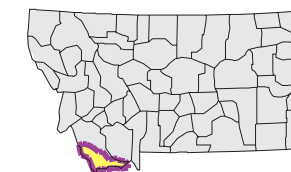
Summary Table of Ownership within HUC			
HUC	10020001	Total Acres	1481826
Owner		Acres	Percent
USFS		385057.61	25.99
Private		421758.95	28.46
Water - Fed.		105003.20	7.1
School - Trust		186274.83	12.57
BLM		413621.06	27.91
Bur of Rec		4529.10	0.31
MT FWP		29.54	0.00
US FWS		39940.73	2.70
Water		4422.63	0.30
USDA		15687.99	1.06
Acres =		1481825.64	



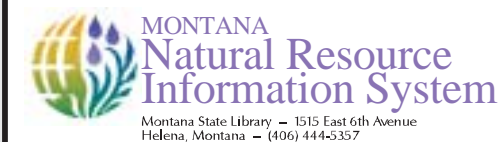
- County Border
- Highway
- Public Land Survey System Townships
- Fourth Code Watersheds
- Bureau of Land Management
- Bureau of Reclamation
- US Fish and Wildlife Service
- US Forest Service
- US Department of Agriculture
- State School Trust
- Depart of Fish Wildlife & Parks
- Private
- Water unknown owner

**Notes:**  
 Not all legend items may appear on this map.  
 Features shown on this map do not imply public access to any lands.  
 The land status data displayed on this map may not be complete and may contain errors in boundary locations and/or coding.  
 The Natural Resource Information System makes no representations or warranties whatsoever with respect to the accuracy or completeness of the data contained in these maps and assumes no responsibility for the suitability of these data for a particular purpose. The Natural Resource Information System will not be liable for any damages incurred as a result of errors displayed here.  
 The ownership boundaries displayed on this map are not based on survey data and are not a substitute for property surveys.

**Sources:**  
 This map displays land status information contained in a statewide data layer that was developed from many sources and continues to be corrected and updated.  
 Much of the public lands information was originally digitized by the Bureau of Land Management (BLM) from 1:100,000 scale BLM Surface Management Status maps. Additional information, corrections and updates (especially for tribal lands and private lands) were added by the University of Montana, Wildlife Spatial Analysis Unit, during 1996-1998, and since, periodically by The Montana Natural Heritage Program.



Mapscale 1: 600000, Scale in miles:



Date created: October 23, 2003  
 Map Request: 04MSL0001 - 10020001 - STEW