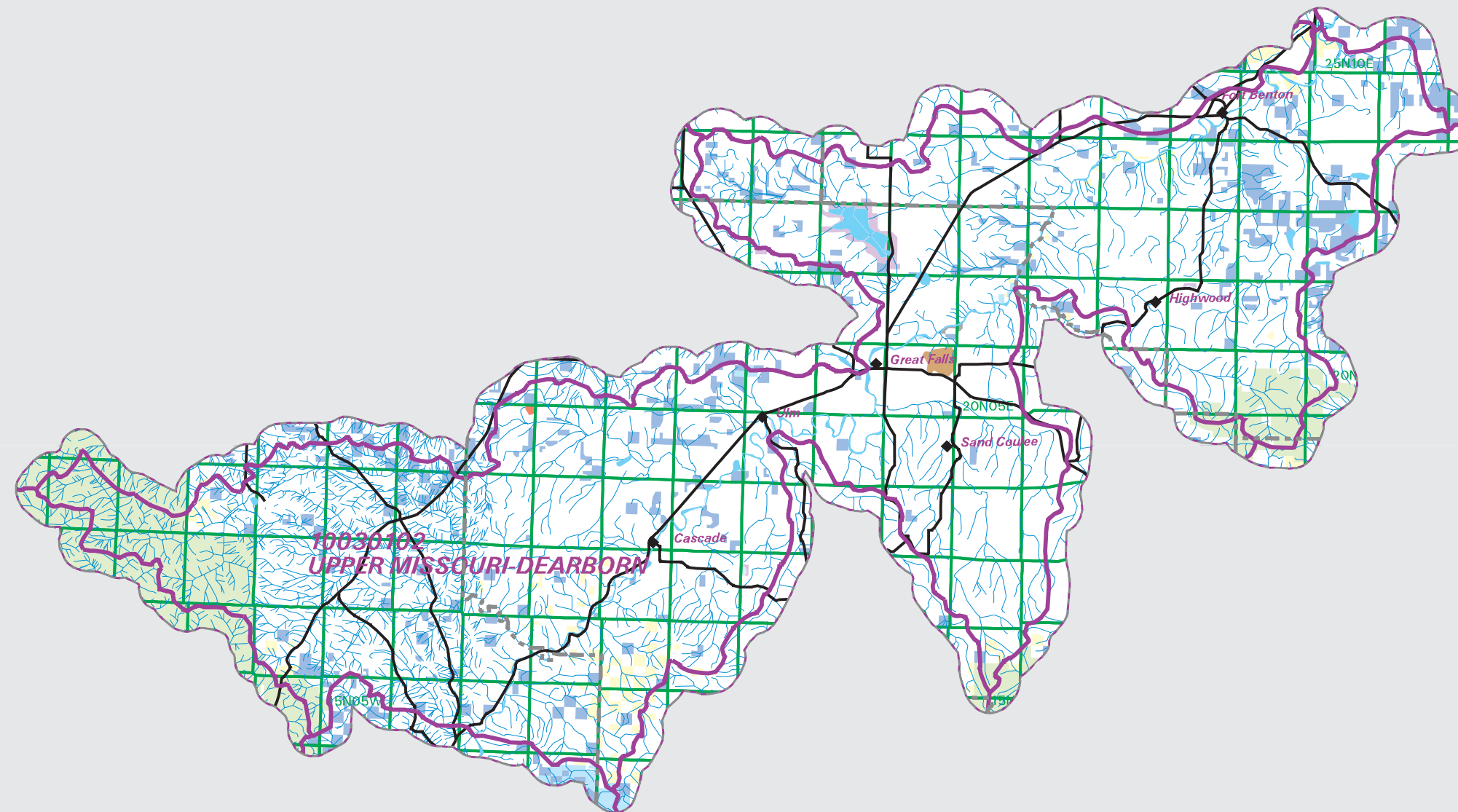


UPPER MISSOURI-DEARBORN Watershed Ownership

Summary Table of Ownership within HUC			
HUC 10030102	Total Acres	1720416	
Owner	Acres	Percent	
Water - navigt	10207.07	0.59	
BLM	30282.07	1.76	
Private	1441022.26	83.76	
School Trust	116427.37	6.77	
Water - PVT	875.81	0.05	
MT FWP	2099.65	0.12	
Water	2196.17	0.13	
USFWS	7287.79	0.42	
Water - Fed.	5611.97	0.33	
City	367.97	0.02	
Dpt - Defense	3136.16	0.18	
USFS	100577.16	5.85	
TNC	316.20	0.02	
County	8.71	0.00	
Acres =	1720416.38		



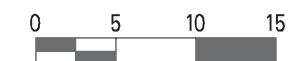
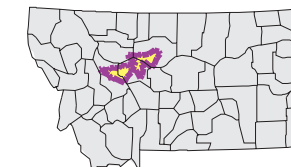
- County Border
- Highway
- Public Land Survey System Townships
- Fourth Code Watersheds
- Bureau of Land Management
- US Fish and Wildlife Service
- US Forest Service
- Department of Defense
- State School Trust
- Depart of Fish Wildlife & Parks
- County
- City
- Private
- The Nature Conservancy
- Water unknown owner

Notes:

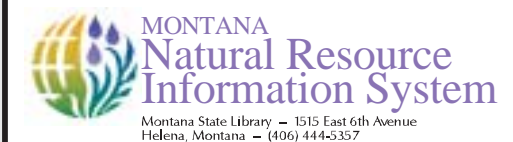
Not all legend items may appear on this map. Features shown on this map do not imply public access to any lands. The land status data displayed on this map may not be complete and may contain errors in boundary locations and/or coding. The Natural Resource Information System makes no representations or warranties whatsoever with respect to the accuracy or completeness of the data contained in these maps and assumes no responsibility for the suitability of these data for a particular purpose. The Natural Resource Information System will not be liable for any damages incurred as a result of errors displayed here. The ownership boundaries displayed on this map are not based on survey data and are not a substitute for property surveys.

Sources:

This map displays land status information contained in a statewide data layer that was developed from many sources and continues to be corrected and updated. Much of the public lands information was originally digitized by the Bureau of Land Management (BLM) from 1:100,000 scale BLM Surface Management Status maps. Additional information, corrections and updates (especially for tribal lands and private lands) were added by the University of Montana, Wildlife Spatial Analysis Unit, during 1996-1998, and since, periodically by The Montana Natural Heritage Program.



Mapscale 1: 760000, Scale in miles:



Date created: October 24, 2003

Map Request: 04MSL0001 - 10030102 - STEW