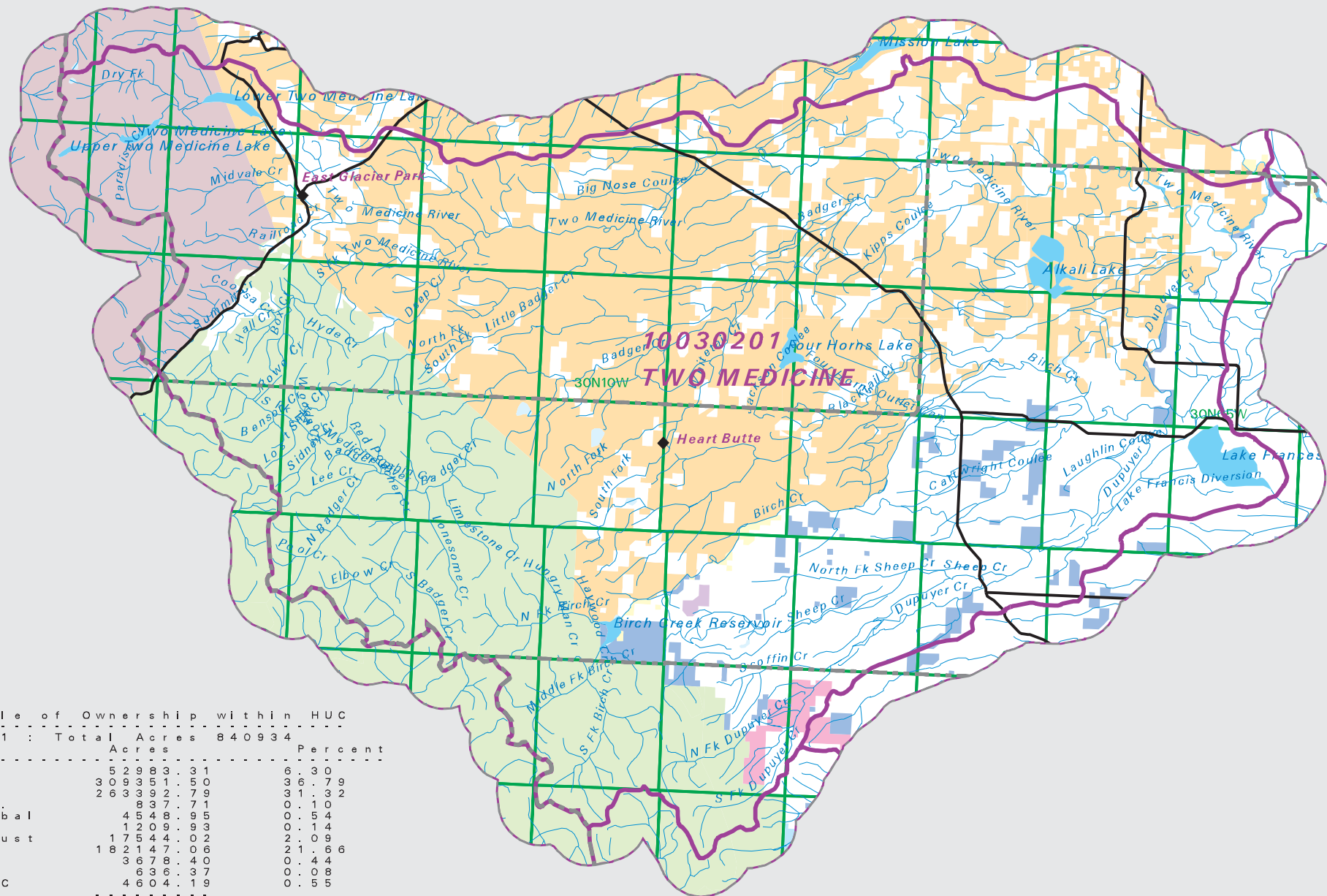


TWO MEDICINE

Watershed Ownership

-  County Border
-  Highway
-  Public Land Survey
System Townships
-  Fourth Code Watersheds
-  Bureau of Land Management
-  US Fish and Wildlife Service
-  National Park Service
-  US Forest Service
-  State School Trust
-  Bureau of Indian Affairs
-  Private
-  Boone & Crockett Club
-  Water unknown owner



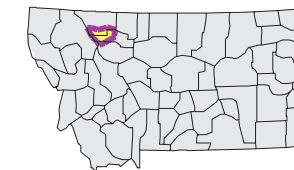
Summary Table of Ownership within HUC		
HUC	Total Acres	Percent
HUC 10030201	840934	
Owner	Acres	Percent
NPS	52983.91	6.30
BLA	309351.50	36.79
Private	263392.79	31.32
Water - Fed.	837.71	0.10
Water - Tribal	4548.95	0.54
BLM	1209.93	0.14
School - Trust	17544.02	2.09
USFS	182147.06	21.66
Water - PVT	3678.40	0.44
USFWS	636.37	0.08
Boone & CC	4604.19	0.55
Acres =	840934.22	

Notes:

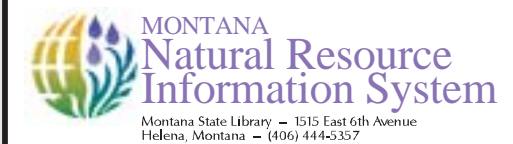
Not all legend items may appear on this map. Features shown on this map do not imply public access to any lands. The land status data displayed on this map may not be complete and may contain errors in boundary locations and/or coding. The Natural Resource Information System makes no representations or warranties whatsoever with respect to the accuracy or completeness of the data contained in these maps and assumes no responsibility for the suitability of these data for a particular purpose. The Natural Resource Information System will not be liable for any damages incurred as a result of errors displayed here. The ownership boundaries displayed on this map are not based on survey data and are not a substitute for property surveys.

Sources:

This map displays land status information contained in a statewide data layer that was developed from many sources and continues to be corrected and updated. Much of the public lands information was originally digitized by the Bureau of Land Management (BLM) from 1:100,000 scale BLM Surface Management Status maps. Additional information, corrections and updates (especially for tribal lands and private lands) were added by the University of Montana, Wildlife Spatial Analysis Unit, during 1996-1998, and since, periodically by The Montana Natural Heritage Program.



Mapscale 1: 420000, Scale in miles:



Montana State Library - 1515 East 6th Avenue
Helena, Montana - (406) 444-5357
Date created: October 25, 2003
Map Request: 04MSL0001 - 10030201 - STEW