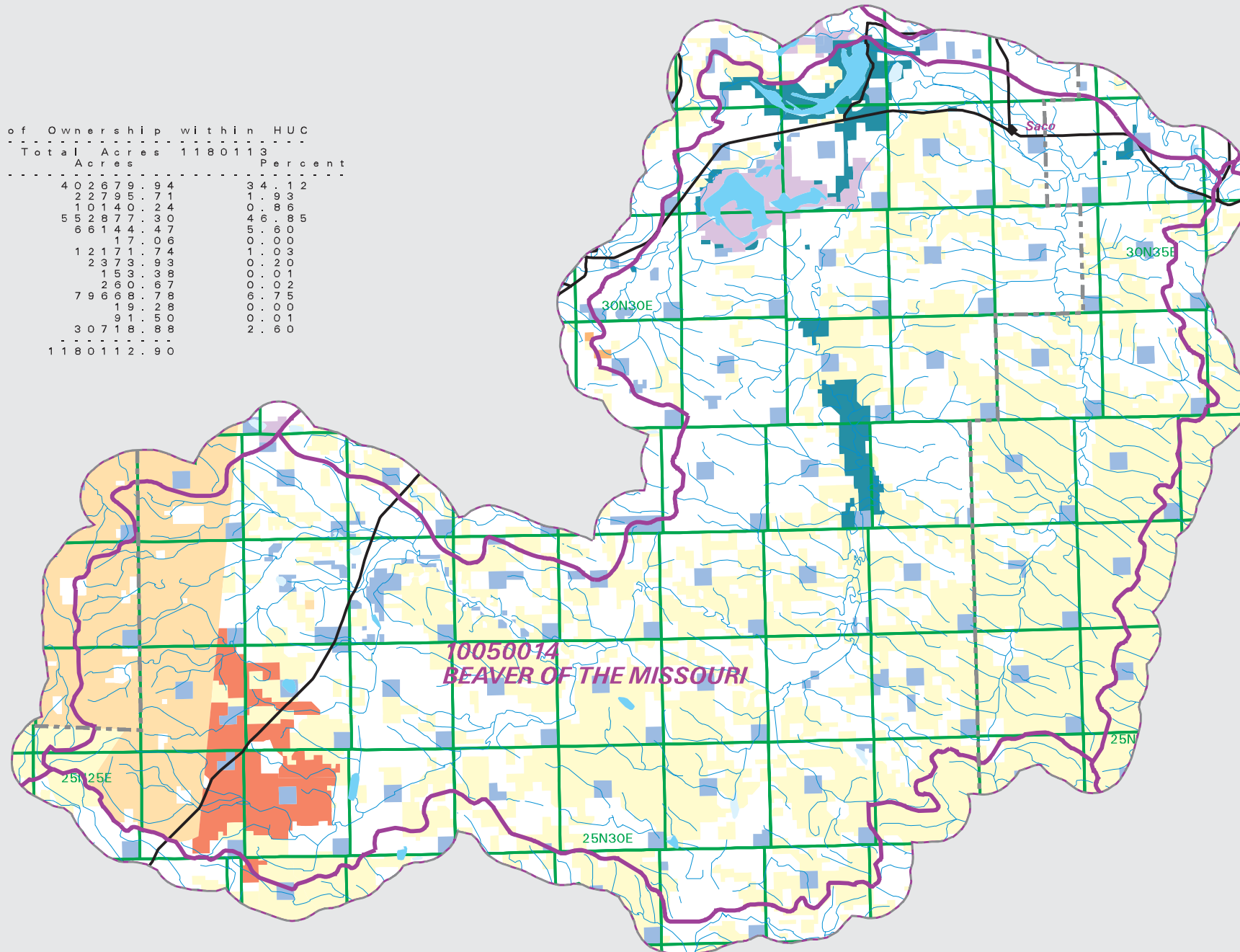


BEAVER OF THE MISSOURI Watershed Ownership

Summary Table of Ownership within HUC
HUC 10050014 : Total Acres 1180113

Owner	Total Acres	Percent
BLM	402679.94	34.12
Bureau of Reclamation	22795.71	1.93
Water - Fed.	10140.24	0.86
Private	552877.30	46.85
School Trust	66144.47	5.60
DNR-C-Project	17.06	0.00
USFWS	12171.74	1.03
Water	2373.93	0.20
MT FWP	153.89	0.01
Turtle Mtn	260.67	0.02
BLA	79668.78	6.75
Local Govt.	19.28	0.00
Water - PVT	91.50	0.01
TNC	30718.88	2.60
Acres =	1180112.90	



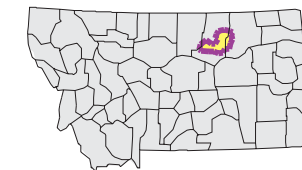
- County Border
- Highway
- Public Land Survey System Townships
- Fourth Code Watersheds
- Bureau of Land Management
- Bureau of Reclamation
- US Fish and Wildlife Service
- State School Trust
- Depart of Fish Wildlife & Parks
- Depart of Natural Resources & Conservation
- Local Governments
- Bureau of Indian Affairs
- Turtle Mountain Tribes
- Private
- The Nature Conservancy
- Water unknown owner

Notes:

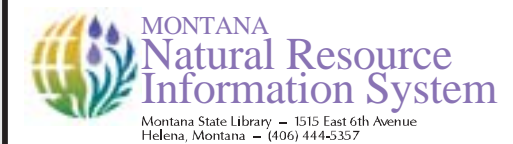
Not all legend items may appear on this map. Features shown on this map do not imply public access to any lands. The land status data displayed on this map may not be complete and may contain errors in boundary locations and/or coding. The Natural Resource Information System makes no representations or warranties whatsoever with respect to the accuracy or completeness of the data contained in these maps and assumes no responsibility for the suitability of these data for a particular purpose. The Natural Resource Information System will not be liable for any damages incurred as a result of errors displayed here. The ownership boundaries displayed on this map are not based on survey data and are not a substitute for property surveys.

Sources:

This map displays land status information contained in a statewide data layer that was developed from many sources and continues to be corrected and updated. Much of the public lands information was originally digitized by the Bureau of Land Management (BLM) from 1:100,000 scale BLM Surface Management Status maps. Additional information, corrections and updates (especially for tribal lands and private lands) were added by the University of Montana, Wildlife Spatial Analysis Unit, during 1996-1998, and since, periodically by The Montana Natural Heritage Program.



Mapscale 1: 500000, Scale in miles:



Date created: October 26, 2003

Map Request: 04MSL0001 - 10050014 - STEW