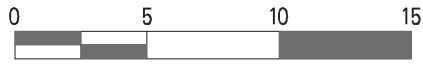
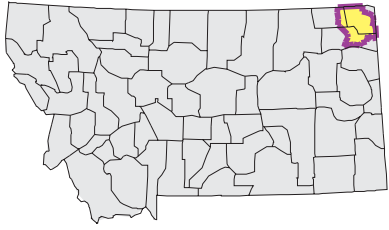
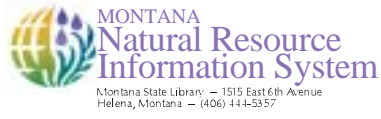


# BIG MUDDY Watershed

## Ownership



Mapscale 1: 460000 Scale in miles:



Date created: October 25, 2003

Map Request: 04MSL0001 - 10060006 - STEW

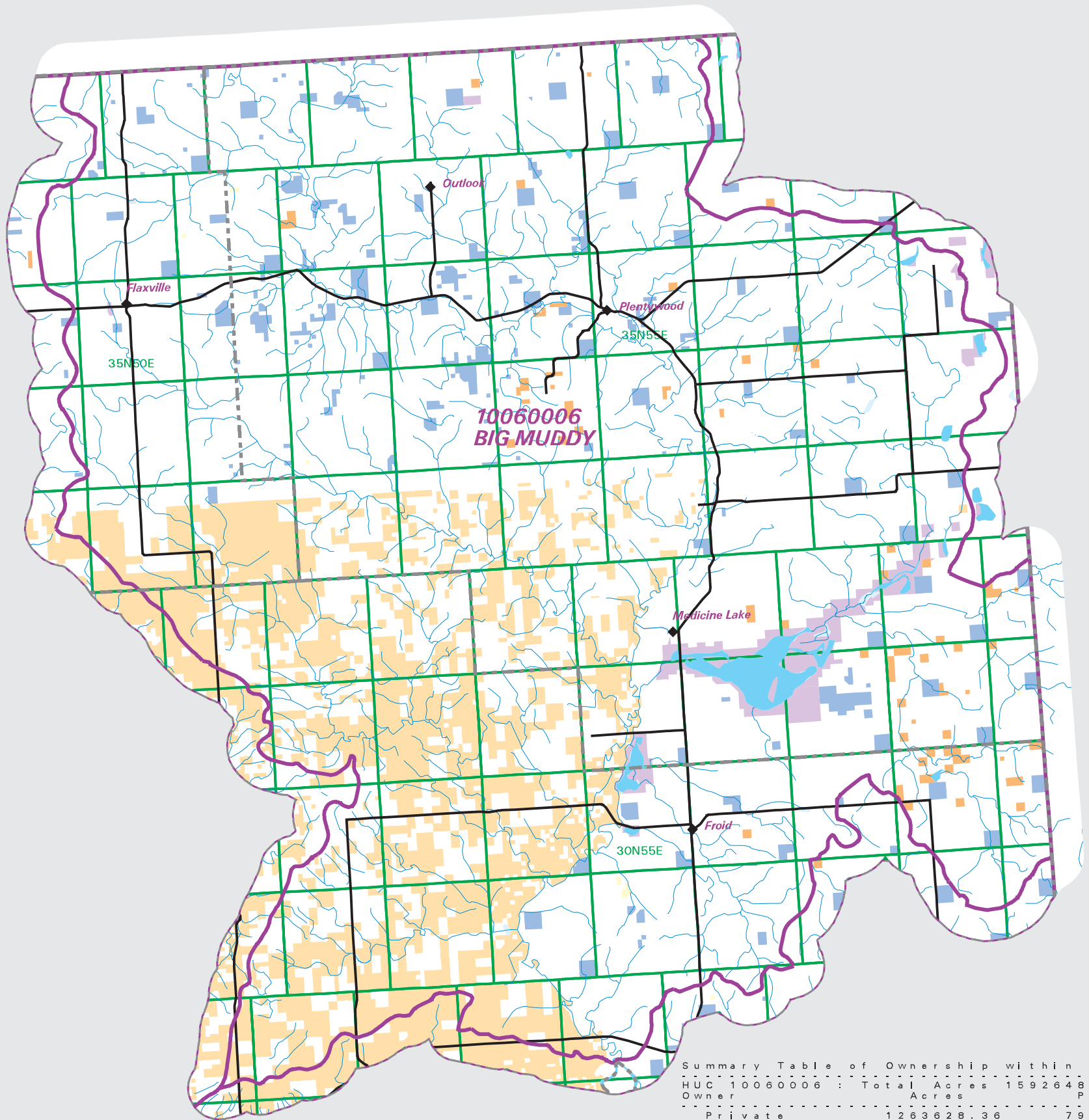
- County Border
- Highway
- Public Land Survey System Townships
- Fourth Code Watersheds
- Bureau of Land Management
- US Fish and Wildlife Service
- State School Trust
- Depart of Fish Wildlife & Parks
- County
- Bureau of Indian Affairs
- Turtle Mountain Tribes
- Private
- Water unknown owner

### Notes:

Not all legend items may appear on this map. Features shown on this map do not imply public access to any lands. The land status data displayed on this map may not be complete and may contain errors in boundary locations and/or coding. The Natural Resource Information System makes no representations or warranties whatsoever with respect to the accuracy or completeness of the data contained in these maps and assumes no responsibility for the suitability of these data for a particular purpose. The Natural Resource Information System will not be liable for any damages incurred as a result of errors displayed here. The ownership boundaries displayed on this map are not based on survey data and are not a substitute for property surveys.

### Sources:

This map displays land status information contained in a statewide data layer that was developed from many sources and continues to be corrected and updated. Much of the public lands information was originally digitized by the Bureau of Land Management (BLM) from 1:100,000 scale BLM Surface Management Status maps. Additional information, corrections and updates (especially for tribal lands and private lands) were added by the University of Montana, Wildlife Spatial Analysis Unit, during 1995-1998, and since, periodically by The Montana Natural Heritage Program.



Summary Table of Ownership within HUC			
HUC	10060006	Total Acres	1592648
Owner		Acres	Percent
Private		1263628.36	79.34
School - Trust		48333.01	3.03
Turtle - Mtn		10025.80	0.63
USFWS		22142.84	1.39
Water - PVT		674.84	0.04
BLM		643.96	0.04
County		59.62	0.00
MT FWP		4.19	0.00
Water		544.78	0.03
Water - Fed.		12109.30	0.76
BIA		234285.18	14.71
Water - Tribal		196.02	0.01
Acres =		1592647.67	