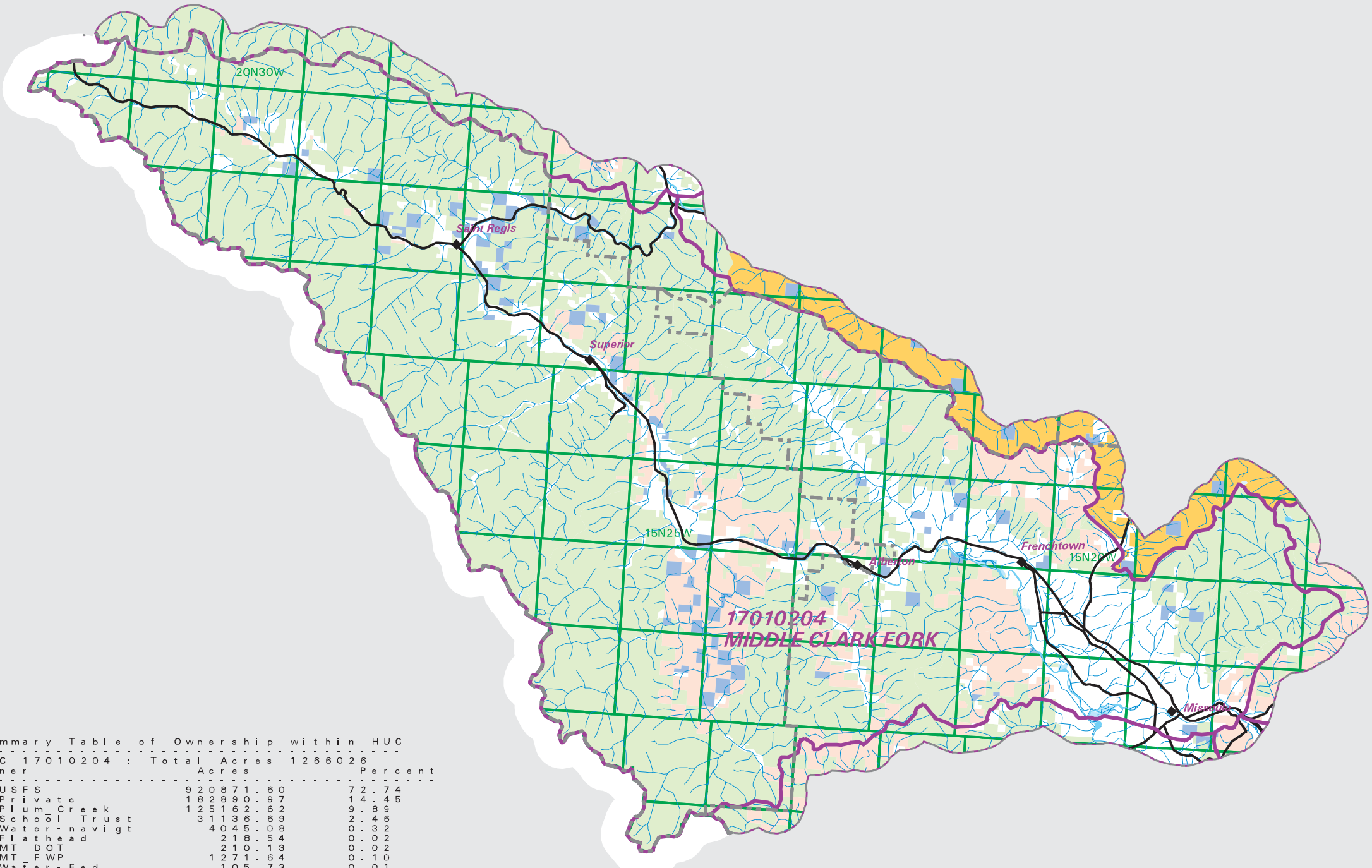


MIDDLE CLARK FORK Watershed Ownership

- County Border
- Highway
- Public Land Survey System Townships
- Fourth Code Watersheds
- US Forest Service
- State School Trust
- Department of Fish Wildlife & Parks
- MT Department of Transportation
- Flathead Tribes
- Private
- Plum Creek Corporate
- Five Valleys Land Trust
- Water unknown owner

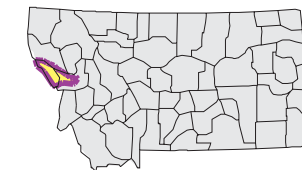


Notes:

Not all legend items may appear on this map. Features shown on this map do not imply public access to any lands. The land status data displayed on this map may not be complete and may contain errors in boundary locations and/or coding. The Natural Resource Information System makes no representations or warranties whatsoever with respect to the accuracy or completeness of the data contained in these maps and assumes no responsibility for the suitability of these data for a particular purpose. The Natural Resource Information System will not be liable for any damages incurred as a result of errors displayed here. The ownership boundaries displayed on this map are not based on survey data and are not a substitute for property surveys.

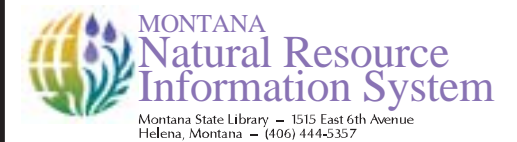
Sources:

This map displays land status information contained in a statewide data layer that was developed from many sources and continues to be corrected and updated. Much of the public lands information was originally digitized by the Bureau of Land Management (BLM) from 1:100,000 scale BLM Surface Management Status maps. Additional information, corrections and updates (especially for tribal lands and private lands) were added by the University of Montana, Wildlife Spatial Analysis Unit, during 1996-1998, and since, periodically by The Montana Natural Heritage Program.



Mapscale 1: 540000, Scale in miles:

Summary Table of Ownership within HUC			
HUC 17010204 :	Total	Acres	1266026
Owner	Acres		Percent
USFS	920871.60		72.74
Private	182890.97		14.45
Plum Creek	125162.62		9.89
School Trust	31136.69		2.46
Water Navigt	4045.08		0.32
Flathead	218.54		0.02
MT - DOT	210.13		0.02
MT - FWP	1271.64		0.10
Water - Fed.	105.73		0.01
Water - PVT	45.11		0.00
FVLT	55.69		0.00
	12.05		0.00
Acres =	1266025.84		



Montana State Library - 1515 East 6th Avenue
Helena, Montana - (406) 444-5357

Date created: October 23, 2003

Map Request: 04MSL0001 - 17010204 - STEW