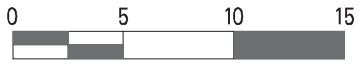
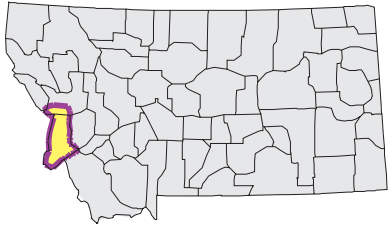
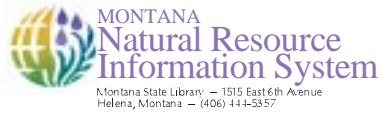


BITTERROOT Watershed

Ownership



Mapscale 1: 550000 Scale in miles:



Date created: October 26, 2003

Map Request: 04MSL0001 - 17010205 - STEW

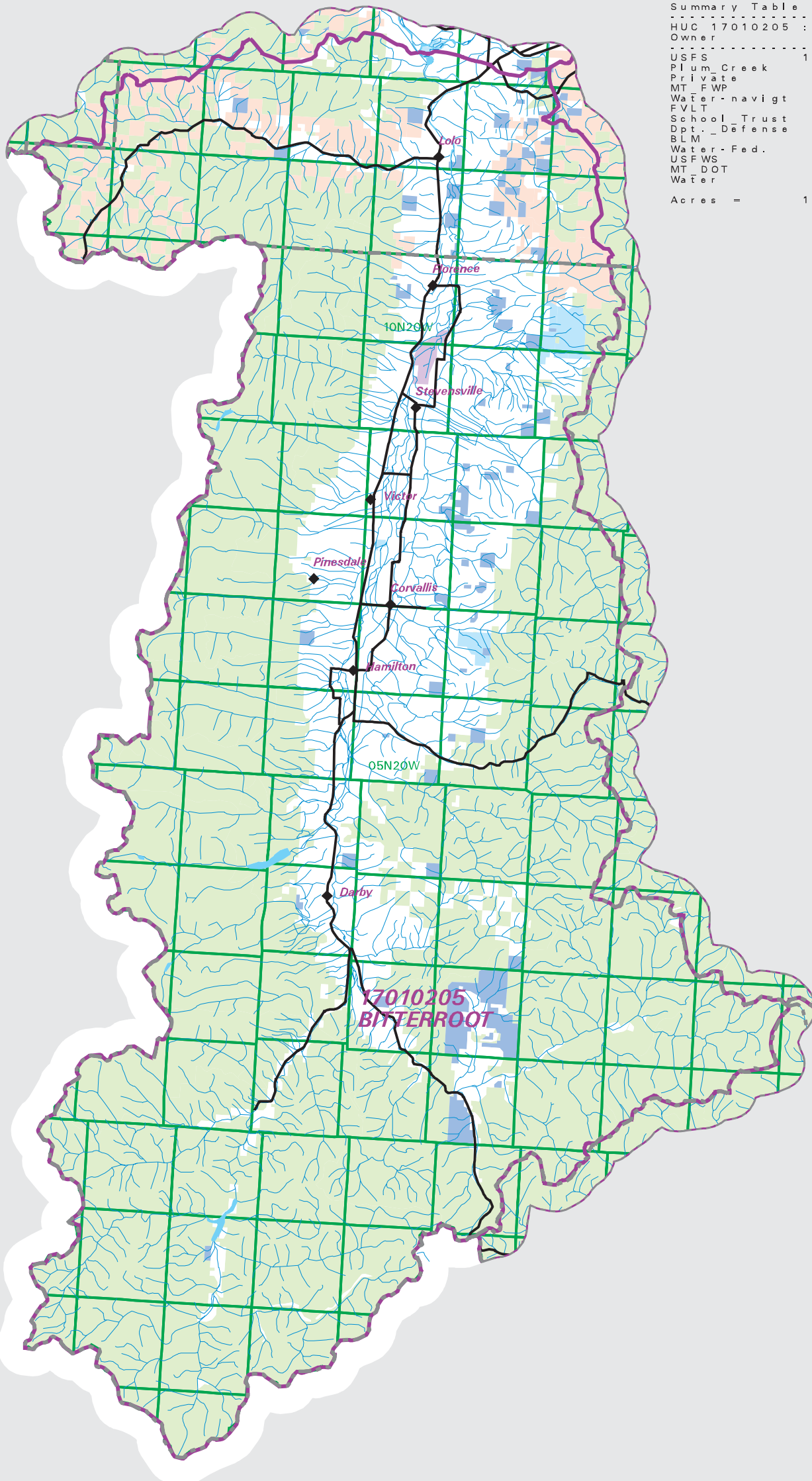
- County Border
- Highway
- Public Land Survey System Townships
- Fourth Code Watersheds
- Bureau of Land Management
- US Fish and Wildlife Service
- US Forest Service
- Department of Defense
- State School Trust
- Depart of Fish Wildlife & Parks
- MT Department of Transportation
- Private
- Plum Creek Corporate
- Five Valleys Land Trust
- Water unknown owner

Notes:

Not all legend items may appear on this map. Features shown on this map do not imply public access to any lands. The land status data displayed on this map may not be complete and may contain errors in boundary locations and/or coding. The Natural Resource Information System makes no representations or warranties whatsoever with respect to the accuracy or completeness of the data contained in these maps and assumes no responsibility for the suitability of these data for a particular purpose. The Natural Resource Information System will not be liable for any damages incurred as a result of errors displayed here. The ownership boundaries displayed on this map are not based on survey data and are not a substitute for property surveys.

Sources:

This map displays land status information contained in a statewide data layer that was developed from many sources and continues to be corrected and updated. Much of the public lands information was originally digitized by the Bureau of Land Management (BLM) from 1:100,000 scale BLM Surface Management Status maps. Additional information, corrections and updates (especially for tribal lands and private lands) were added by the University of Montana, Wildlife Spatial Analysis Unit, during 1995-1998, and since, periodically by The Montana Natural Heritage Program.



Summary Table of Ownership within HUC			
HUC	Total Acres	Acres	Percent
HUC 17010205	1827555		
Owner	Acres		Percent
USFS	1252263.55		68.52
Plum Creek	81448.01		4.48
Private	440207.77		24.09
MT FWP	8859.89		0.48
Water-navigt	0.58		0.00
FVLT	5.95		0.00
School_Trust	40039.71		2.19
Dpt. Defense	28.83		0.00
BLM	4.91		0.00
Water-Fed.	1485.08		0.08
USFWS	2677.13		0.15
MT_DOT	13.11		0.00
Water	520.45		0.03
Acres =	1827554.97		