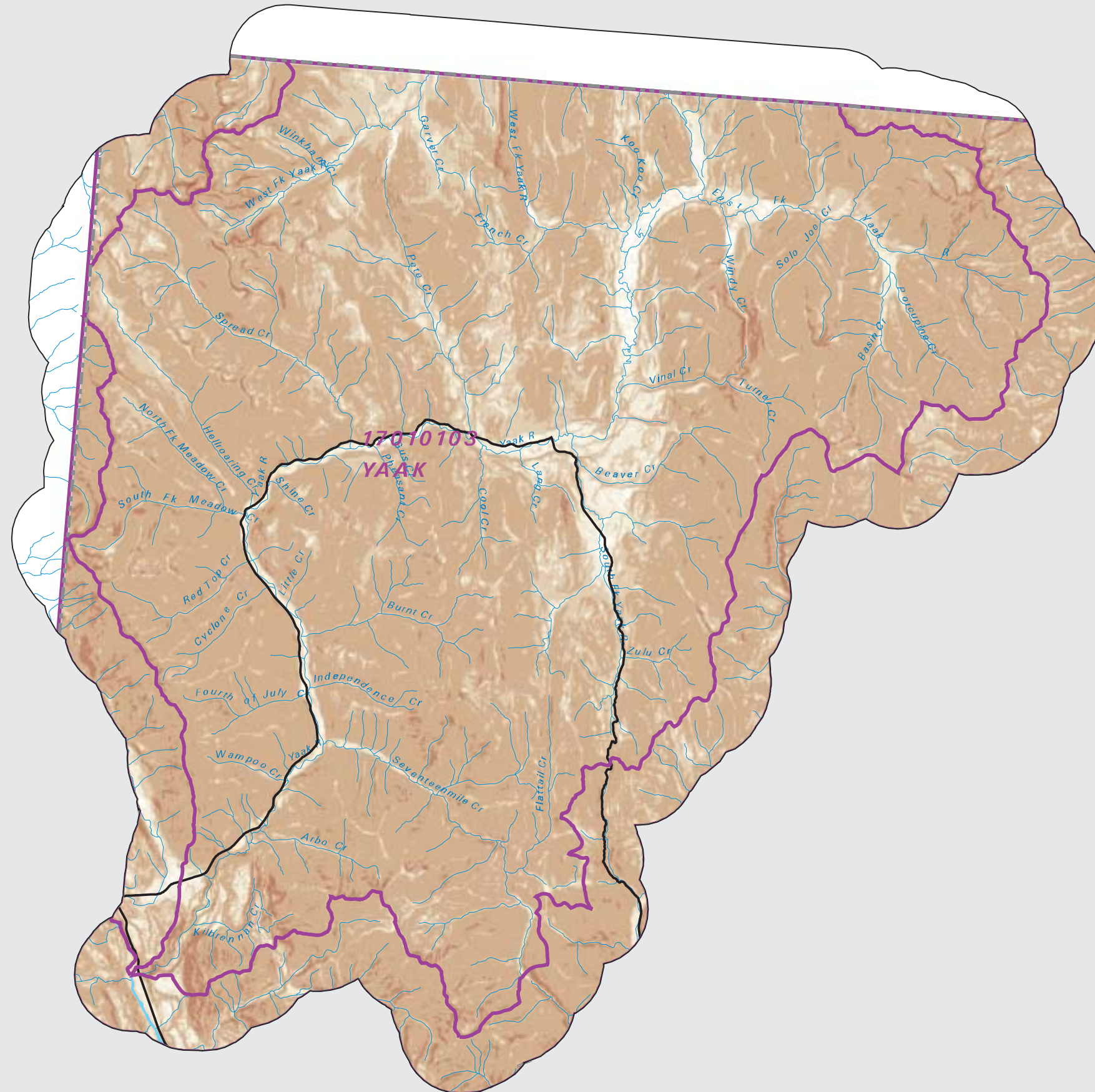


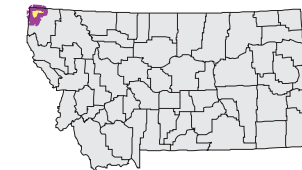
YAAK Watershed Slope Classes from NED



- County Border
- Highway
- Fourth Code Watersheds
- 0 < X <= 4
- 4 < X <= 10
- 10 < X <= 30
- 30 < X <= 45
- 45 < X <= 60
- 60 < X <= 90
- Flat, 0

SOURCE:
US Geological Survey National Elevation Dataset (NED) files.
NED has been developed by merging the highest resolution elevation data available for the United States into a seamless dataset.
The slopes displayed are derived from the NED solely to illustrate one application of the dataset. This slope data is intended to display slope patterns, rather than a particular point of slope.

This map is to be used as a primary reference source and is not intended for use in site - specific planning. This is public information and may be interpreted by organizations, agencies, units of government, or others, based on needs; however, they are responsible for the appropriate application. Federal, State, or local regulatory bodies are not to reassign to the Natural Resource Information System any authority for the decisions they make.



Mapscale 1: 250000, Scale in miles:



Montana State Library - 1515 East 6th Avenue
Helena, Montana - (406) 444-5357

Date created: December 04, 2003

Map Request: 04MSL0001 - 17010103 - SLOPE