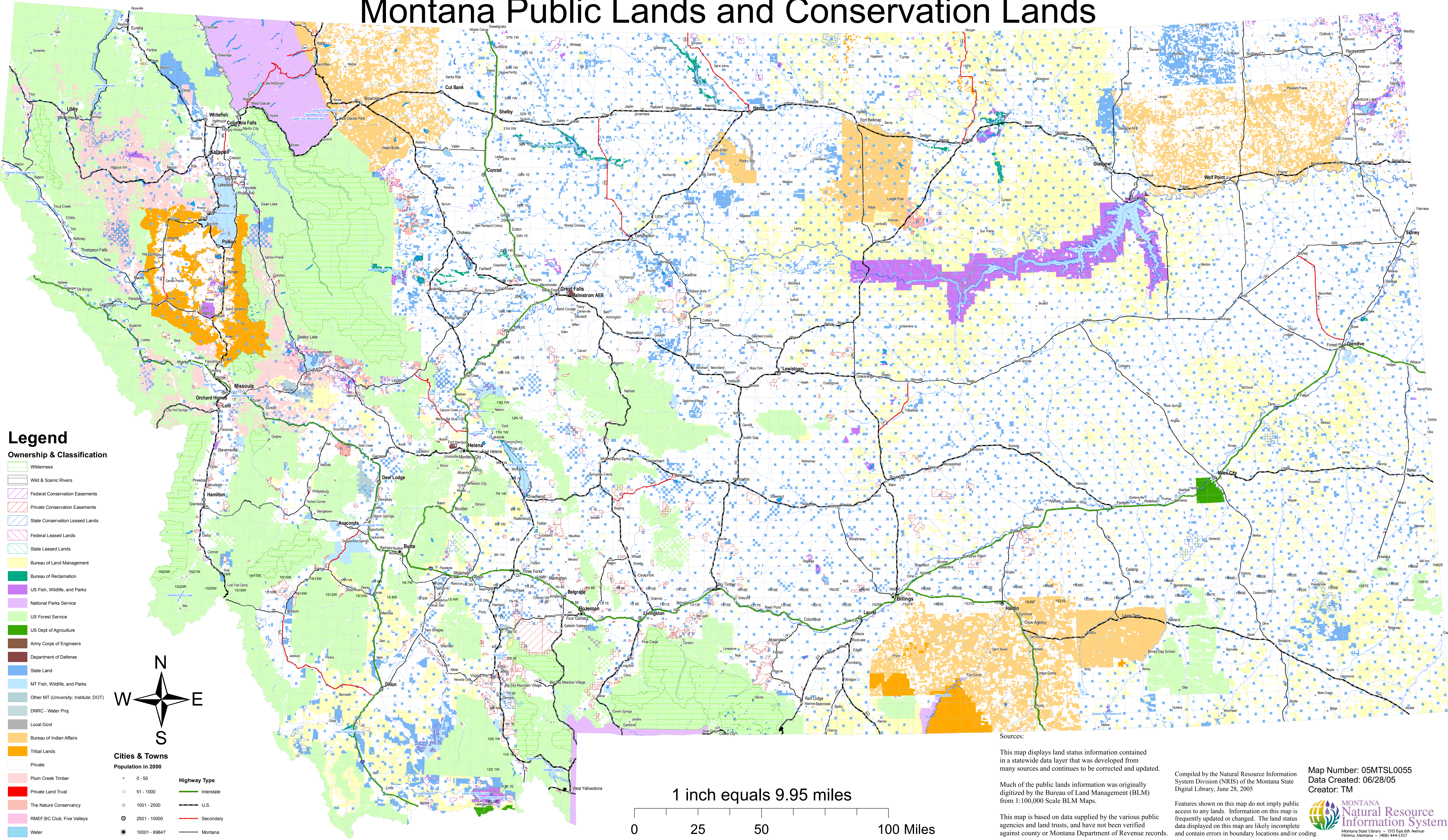


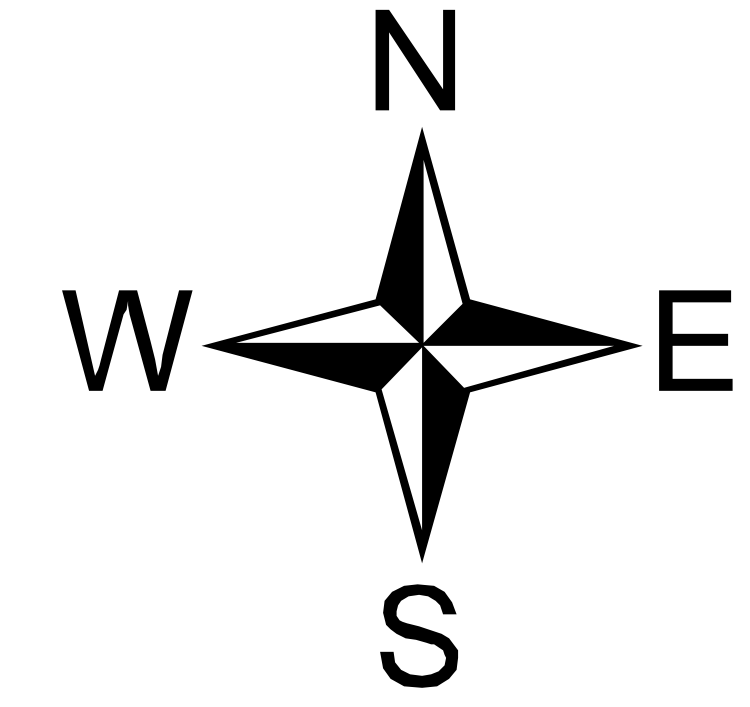
Montana Public Lands and Conservation Lands



Legend

Ownership & Classification

- Wilderness
- Wild & Scenic Rivers
- Federal Conservation Easements
- Private Conservation Easements
- State Conservation Leased Lands
- Federal Leased Lands
- State Leased Lands
- Bureau of Land Management
- Bureau of Reclamation
- US Fish, Wildlife, and Parks
- National Parks Service
- US Forest Service
- US Dept of Agriculture
- Army Corps of Engineers
- Department of Defense
- State Land
- MT Fish, Wildlife, and Parks
- Other MT (University, Institute, DOT)
- DNRC - Water Proj.
- Local Govt
- Bureau of Indian Affairs
- Tribal Lands
- Private
- Plum Creek Timber
- Private Land Trust
- The Nature Conservancy
- RMEF/BC Club; Five Valleys
- Water



- ### Cities & Towns
- Population in 2000
- 0 - 50
 - 51 - 1000
 - 1001 - 2500
 - 2501 - 10000
 - 10001 - 89847

- ### Highway Type
- Interstate
 - U.S.
 - Secondary
 - Montana

1 inch equals 9.95 miles



Sources:
This map displays land status information contained in a statewide data layer that was developed from many sources and continues to be corrected and updated.
Much of the public lands information was originally digitized by the Bureau of Land Management (BLM) from 1:100,000 Scale BLM Maps.
This map is based on data supplied by the various public agencies and land trusts, and have not been verified against county or Montana Department of Revenue records.

Compiled by the Natural Resource Information System Division (NRIS) of the Montana State Digital Library, June 28, 2005
Features shown on this map do not imply public access to any lands. Information on this map is frequently updated or changed. The land status data displayed on this map are likely incomplete and contain errors in boundary locations and/or coding.

Map Number: 05MTSL0055
Data Created: 06/28/05
Creator: TM

Montana State Library - 1515 East 6th Avenue
Helena, Montana - (406) 444-5357