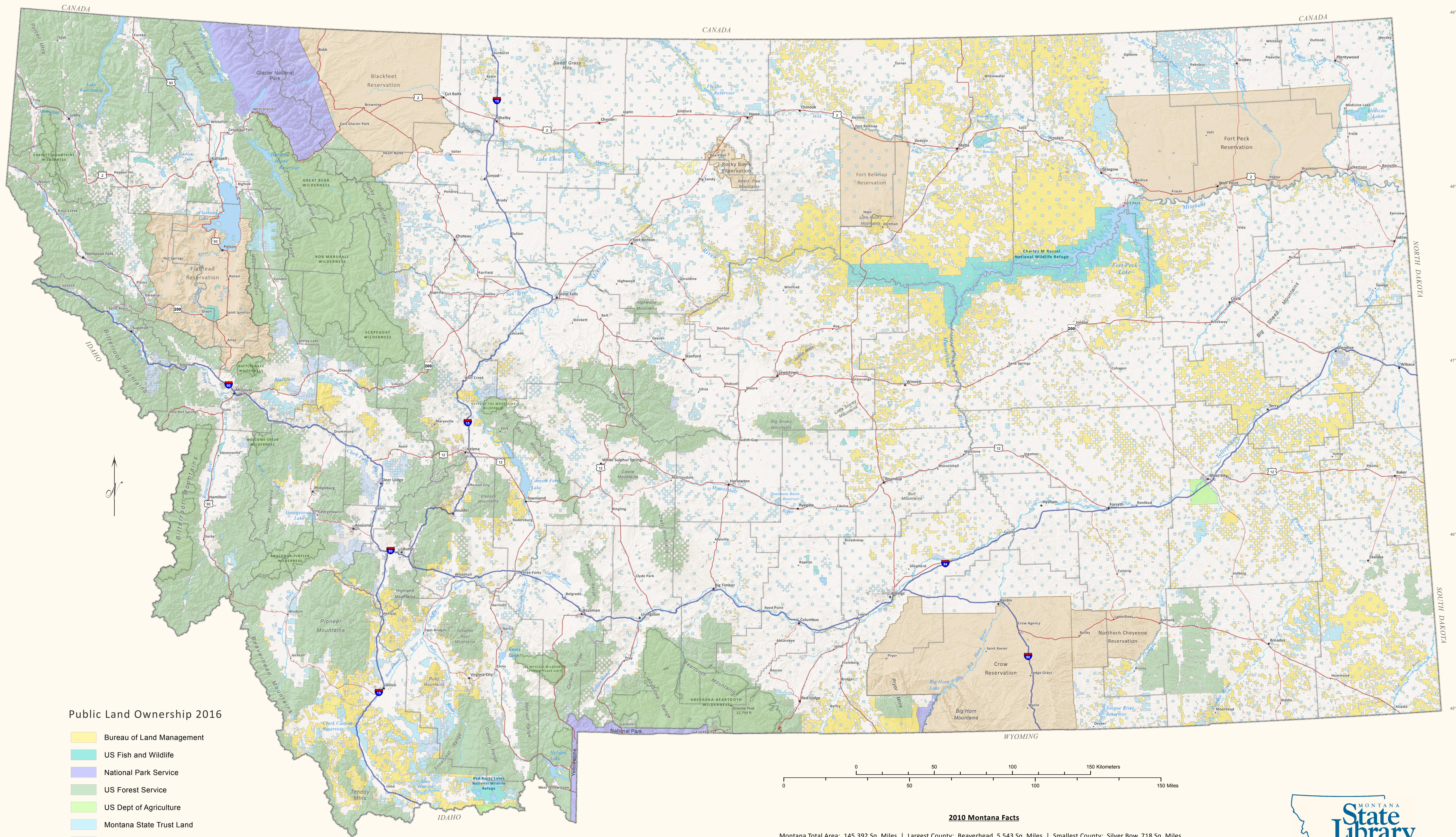
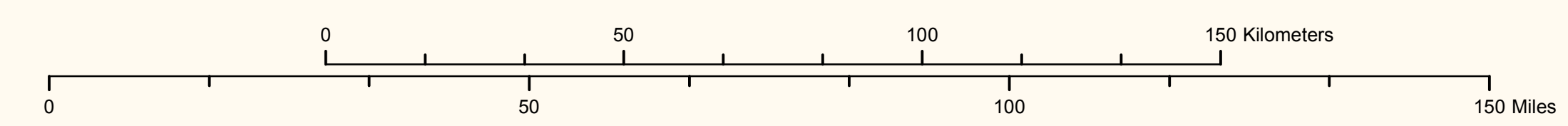


# The State of Montana



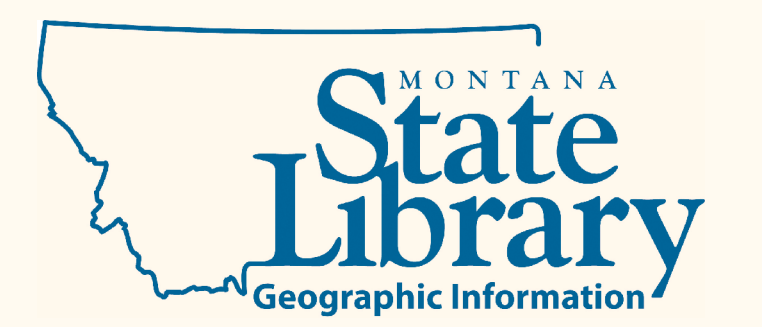
Public Land Ownership 2016

- Bureau of Land Management
- US Fish and Wildlife
- National Park Service
- US Forest Service
- US Dept of Agriculture
- Montana State Trust Land
- State of Montana - Miscellaneous



**2010 Montana Facts**

Montana Total Area: 145,392 Sq. Miles | Largest County: Beaverhead, 5,543 Sq. Miles | Smallest County: Silver Bow, 718 Sq. Miles  
 Largest City: Billings, Yellowstone County, Population 104,170 | Smallest County Seat: Winnet, Petroleum County, Population 182  
 Major Rivers: Yellowstone River, Missouri River, Clark Fork River | High Point: Granite Peak 12,799 ft | Low Point: Kootenai River 1800 ft



A digital "State of Montana Map" can be found at the Official State Website: [MONTANA.GOV](http://MONTANA.GOV)