

County	Rosebud	Upstream River Mile	225
Classification	PCM/I: Partially confined meandering/islands	Downstream River Mile	214.8
General Location	Rosebud	Length	10.20 mi (16.42 km)

Narrative Summary

Reach C12 is 10.2 miles long and extends from the Rosebud Bridge at RM 225 downstream to RM 215. The reach classified as Partially Confined Meandering with Islands (PCM/I), indicating some influence of the valley wall, a main meandering channel thread, and numerous meander cutoffs that have generated large islands. The reach is relatively dynamic; at RM 221.5 for example the river has migrated over 900 feet to the northwest since 1950. At RM 217.2R, the river migrated over 300 feet between 2001 and 2011. Most of the rapid migration is on the outer edges (apices) and downstream limbs of large meanders.

As of 2011 there were 4,700 feet of bank armor protecting about 4 percent of the total bankline in Reach C12, and almost all of that armor is rock riprap. About one half of the armor was built between 2001 and 2011. One short section (200 feet) of flow deflectors was also built between 2001 and 2011. The bank armor is protecting agricultural land and the active rail line. Almost 2,000 feet of the mapped bank armor is north of the town of Rosebud on a channel that has been largely abandoned. This channel abandonment has focused flows in the south channel, which currently flows against the town of Rosebud which has minimal erosion protection.

Prior to 1950, about ½ miles of side channel in Reach C12 were blocked. One short channel is just upstream of the town of Rosebud, and a much longer channel is on the south side of the river at RM 219R.

Similar to other reaches downstream of the Bighorn River confluence, the river channel has become smaller in Reach C12 since 1950. In 1950, the bankfull footprint was about 56 acres larger than it was in 2001, and riparian mapping shows over 211 acres of riparian encroachment into old channel areas. Some of that encroachment has been onto mid-channel bars; there was a net loss of 36 acres of open bars since 1950. Floodplain turnover rates are also lower; from 1950-1975 the average annual rate of floodplain turnover was 8.9 acres per year, and since 1975 it has been 5.8 acres per year.

Over a thousand acres of the 100-year floodplain has become isolated from the river, most of which is north of the abandoned rail line. Several pockets of historic 100-year floodplain have also been isolated on the south side of the river between the rail line and bluff area. In total, 29 percent of the entire historic 100-year floodplain has become isolated. Isolation of the 5-year floodplain has been even more substantial; 1,340 acres or 47 percent of the 5-year floodplain has become isolated at that event. Much of this isolated 5-year floodplain is on flood irrigated fields north of the river.

A total of 216 acres of land that would normally be in the river's natural Channel Migration Zone (CMZ) have become restricted by physical features, which represents about 6 percent of the total CMZ area. At Rosebud, 59 acres of urban/exurban land has been mapped within the CMZ.

Land uses in Reach C12 are predominantly agricultural, with some conversion from flood irrigation to pivot since 1950. As of 2011 there were about 430 acres under pivot irrigation in the reach, and 197 of those acres are within the 5-year floodplain. Pivot irrigation has also encroached into the CMZ; about 200 acres that were developed for pivot are within the CMZ footprint. Irrigation development largely occurred prior to 1950, but additional development since then has included riparian clearing; between 1950 and 2011 about 45 acres of riparian area was cleared for irrigation, which is 5 percent of the total 1950s riparian area.

One animal handling facility was mapped at RM 222L that extends to the river bank.

There are 206 acres of mapped Russian olive in the reach, which is distributed throughout the riparian zone.

Reach C12 was sampled as part of the fisheries study. A total of 37 species were sampled in the reach, including Sauger and Blue Sucker, both of which have been identified as Species of Concern by the Montana Natural Heritage Program.

A hydrologic evaluation of flow depletions indicates that flow alterations over the last century have been major in this reach. The 100-year flood has dropped by 17 percent and the 2-year flood, which strongly influences overall channel form, has dropped by 24 percent. Low flows have also been impacted; severe low flows described as 7Q10 (the lowest average 7-day flow anticipated every ten years) for summer months has dropped from an estimated 4,830 cfs to 3,060 cfs with human development, a reduction of 37 percent. More typical summer low flows, described as the summer 95% flow duration, have dropped from 6,310 cfs under unregulated conditions to 3,380 cfs under regulated conditions, a reduction of 46 percent.

Fall and winter base flows have increased in Reach C12 by about 60 percent.

CEA-Related observations in Reach C12 include:

- Extensive floodplain isolation by the abandoned Milwaukee rail line on the north bank.
- Blocking of side channels

Recommended Practices (may include Yellowstone River Recommended Practices--YRRPs) for Reach C12 include:

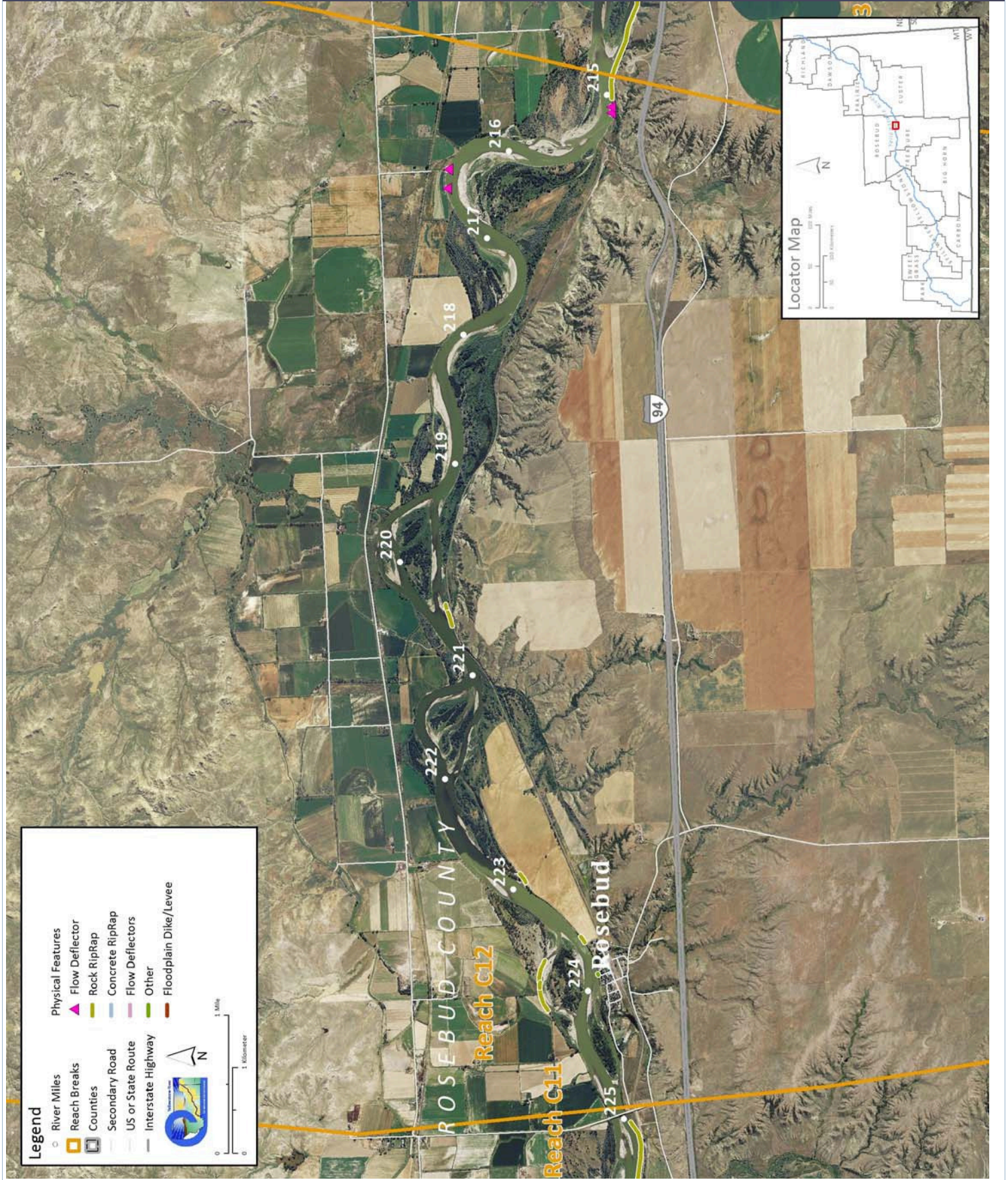
- Side channel reactivation at RM 219 R.
- Floodplain reconnection behind abandoned railroad grade RM 220L
- Nutrient management at Animal Handling Facility at RM 222L

- Russian olive removal

The following table summarizes some key CEA results that have been used to describe overall condition and types of human influences affecting the river. The values are specific to this single reach. Blanks indicate that a particular value was not available for this area. This information is consolidated from a large dataset that is presented in more detail in the full reach narrative report.

Discharge	Undev.	Developed	% Change	"Undeveloped" flows represent conditions prior to significant human development, whereas "developed" flows reflect the current condition of both consumptive and non-consumptive water use.		
2 Year (cfs)	61,900	47,300	-23.6%			
100 Year (cfs)	120,000	98,900	-17.6%			
Bankfull Channel Area (Ac)	1950	1976	1995	2001	1950-2001	Bankfull channel area is the total footprint of the river inundated at approx. the 2-year flood.
	1,087.9	1,069.8	1,020.0	1,033.1	-54.8	
Physical Features	2011 Length (ft)	% of Bankline	2001-2011 Change	There are additional types of bank armor such as car bodies and steel retaining walls, but they are relatively minor.		
Rock Riprap	4,510	4.2%	1,833			
Concrete Riprap	0	0.0%	0			
Flow Deflectors	192	0.2%	192			
Total	4,702	4.4%	2,025			
Length of Side Channels Blocked (ft)	Pre-1950s	Post-1950s	Numerous side channels have been blocked by small dikes.			
	9,079	0				
Floodplain Turnover	1950 - 1976	1976 - 2001	1950-2001 In-channel riparian encroachment (negative number indicates retreat)	The rate of floodplain turnover reflects how many acres of land are eroded by the river. Turnover is associated with the creation of riparian habitat.		
Total Acres	230.2	145.9	211.32 acres			
Acres/Year	8.9	5.8				
Acres/Year/Valley Mile	1.1	0.7				
Open Bar Area	Point Bars	Bank Attached	Mid-Channel	Total	The type and extent of open sand and gravel bars reflect in-stream habitat conditions that can be important to fish, amphibians, and ground-nesting birds such as least terns.	
Change in Area '50 - '01 (Ac)	-40	49.8	-45.7	-36		
Floodplain Isolation	Acres	% of FP	Floodplain isolation refers to area that historically was flooded, but has become isolated do to flow alterations or physical features such as levees.			
5 Year	1,339.7	47%				
100 Year	1,237.1	29%				
Restricted Migration Area	Acres	% of CMZ	Channel Migration Zone restrictions refer to the area and percent of the CMZ that has been isolated by features such as bank armor, dikes, levees, and transportation embankments.			
	216.0	6%				
Land Use	1950	2011	1950	2011	Changes in land use reflect the development of the river corridor through time. The irrigated agricultural are is a sub-set of the mapped agricultural land.	
Agricultural Land (Ac)	7,038.5	7,052.1	Flood (Ac)	3,834.0	2,866.5	
Ag. Infrastructure (Ac)	76.1	128.5	Sprinkler (Ac)	0.0	0.0	
Exurban (Ac)	0.0	1.6	Pivot (Ac)	0.0	429.5	
Urban (Ac)	61.1	59.5				
Transportation (Ac)	162.9	136.7				
1950s Riparian Vegetation Converted to a Developed Land Use (ac)	To Irrigated	To Other Use	Total Rip. Converted	% of 1950s Rip.	Changes in the extents of riparian vegetation are influenced by land use changes within the corridor.	
	45.4	2.5	47.9	5.0%		
National Wetlands Inventory	Acres	Acres per Valley Mi	Total Wetland Acres	Wetlands units summarized from National Wetlands Inventory Mapping include Riverine (typically open water sloughs), Emergent (marshes and wet meadows) and Shrub-Scrub (open bar areas with colonizing woody vegetation).		
Riverine	23.3	2.9	230.4			
Emergent	122.7	15.3				
Scrub/Shrub	84.4	10.6				
Russian Olive (2001) (Appx. 100-yr Floodplain)	Acres	%	Russian olive is considered an invasive species and its presence in the corridor is fairly recent. Its spread can be used as a general indicator of invasive plants within the corridor.			
	205.6	2.8%				
Riparian Forest at low risk of Cowbird Parasitism (Ac/Valley Mile)	1950	1976	2001	Change 1950-2011	Cowbirds are associated with agricultural and residential development, displacing native bird species by parasitizing their nests.	
	18.8	14.2	31.0	12.2		

PHYSICAL FEATURES MAP (2011)



CHANNEL MIGRATION ZONE MAP

