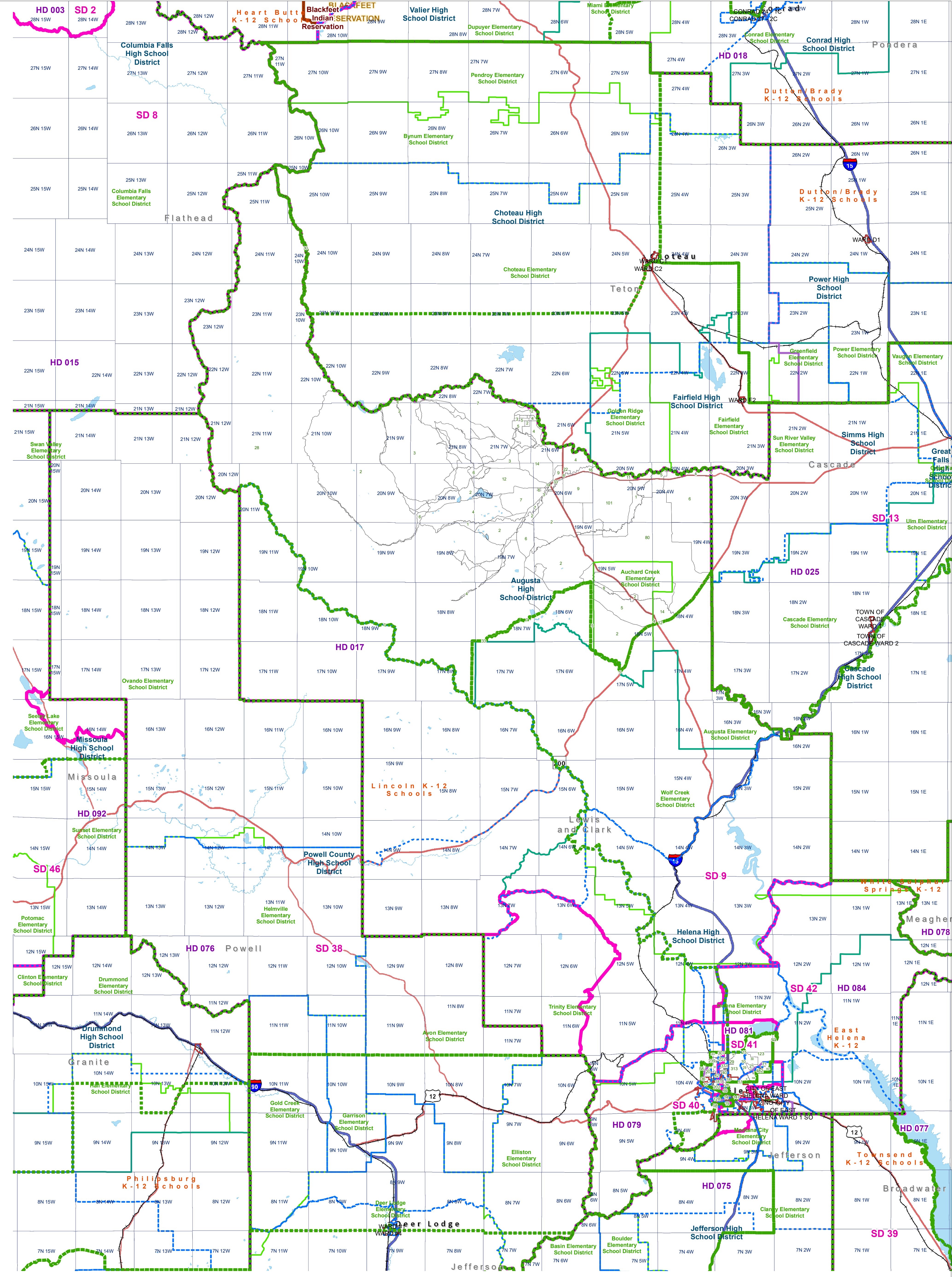
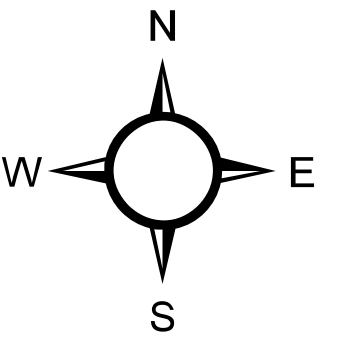


Lewis and Clark - D2 County Commissioner Districts with 2020 Census Blocks

Total Population: 23,563



- County Commissioner Districts
- Voting Precincts
- Secondary School Districts
- Incorporated Cities and Towns
- Township Boundary
- Senate
- Elementary School Districts
- Wards
- Tribal Nations Reservations
- House
- Unified (K-12) School Districts
- 2020 Census Blocks with Total Population Labeled



Voting Precincts
Montana State Library
Created on 3/9/2023
Meghan Burns | GeoEnabledElections@mt.gov
<https://geoenabled-elections-montana.hub.arcgis.com/>