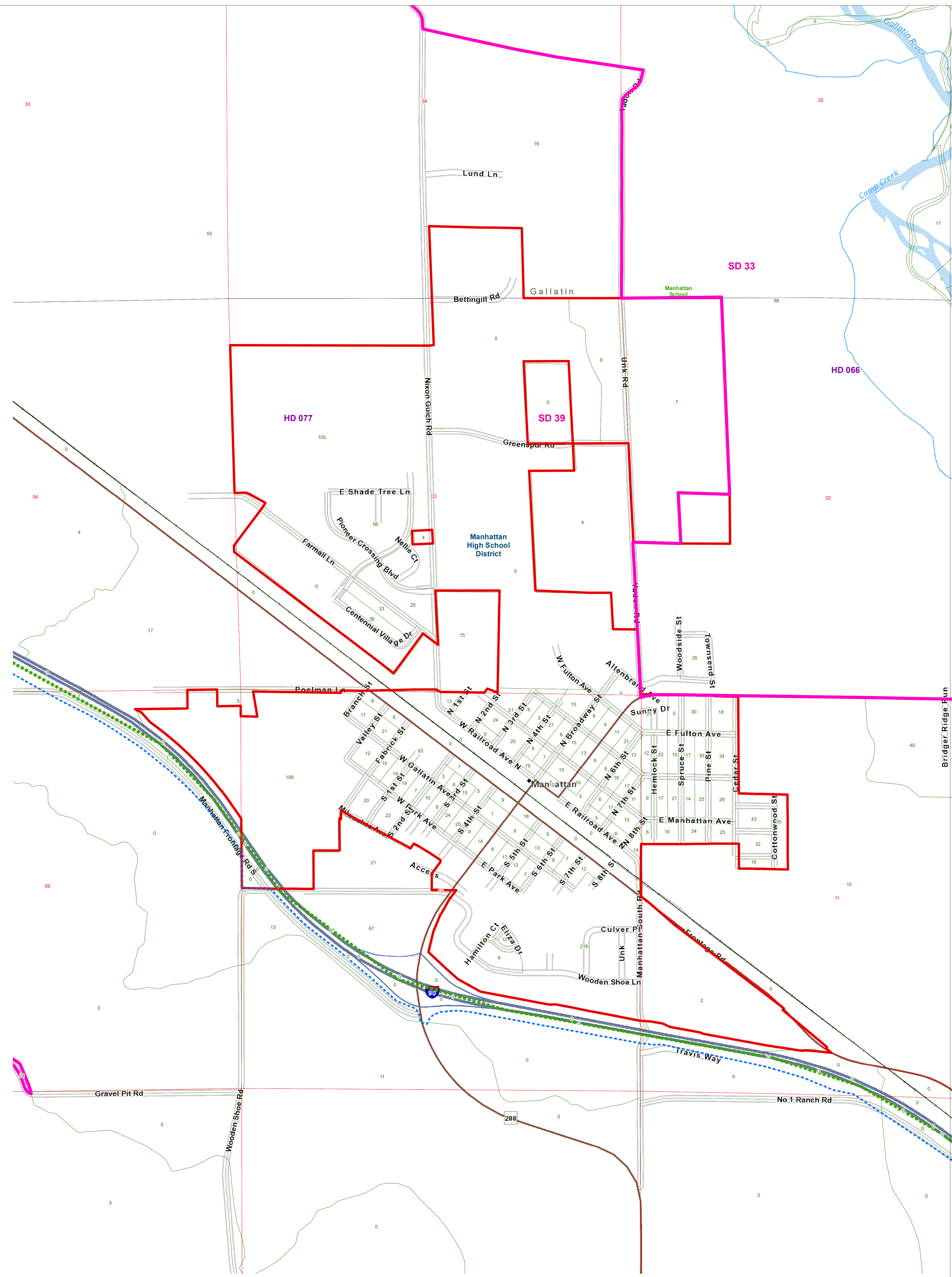


# County Commissioner Districts with 2020 Census Population Manhattan, Gallatin County



- County Commissioner Districts
- Voting Precincts
- Senate
- House
- Tribal Nations Reservations
- Secondary School Districts
- Elementary School Districts
- Unified (K-12) School Districts
- Incorporated Cities and Towns
- Wards
- Township Boundary
- Sections
- 2020 Census Blocks with Total Population Labeled in Green



Voting Precincts  
 Montana State Library  
 Created on 3/14/2023  
 Meghan Burns | [GeoEnabledElections@mt.gov](mailto:GeoEnabledElections@mt.gov)  
<https://geoenabled-elections-montana.hub.arcgis.com/>