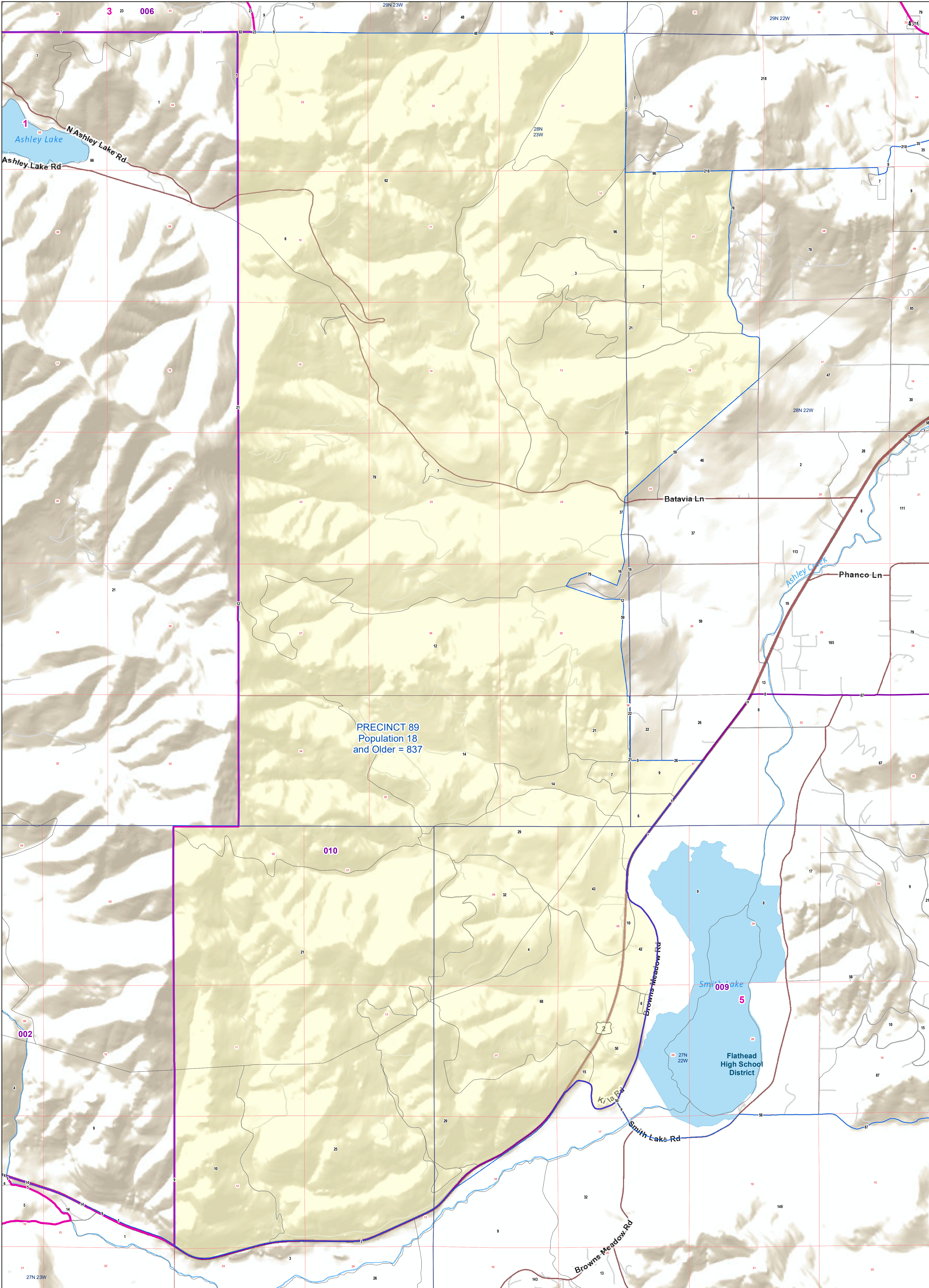
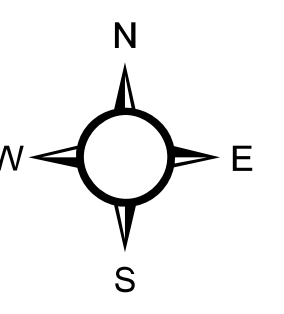


Flathead County: PRECINCT 89

Voting Precincts and Legislative Districts



PRECINCT 89
Population 18
and Older = 837

SMITH LAKE
5
Flathead
High School
District

- Voting Precincts
- Senate
- House
- Incorporated Cities and Towns
- Wards
- Tribal Nations Reservations
- Unified (K-12) School Districts
- Secondary School Districts
- Elementary School Districts
- 2020 Census Blocks with Population 18 and Older Labeled
- Township Boundary
- Section Boundary

