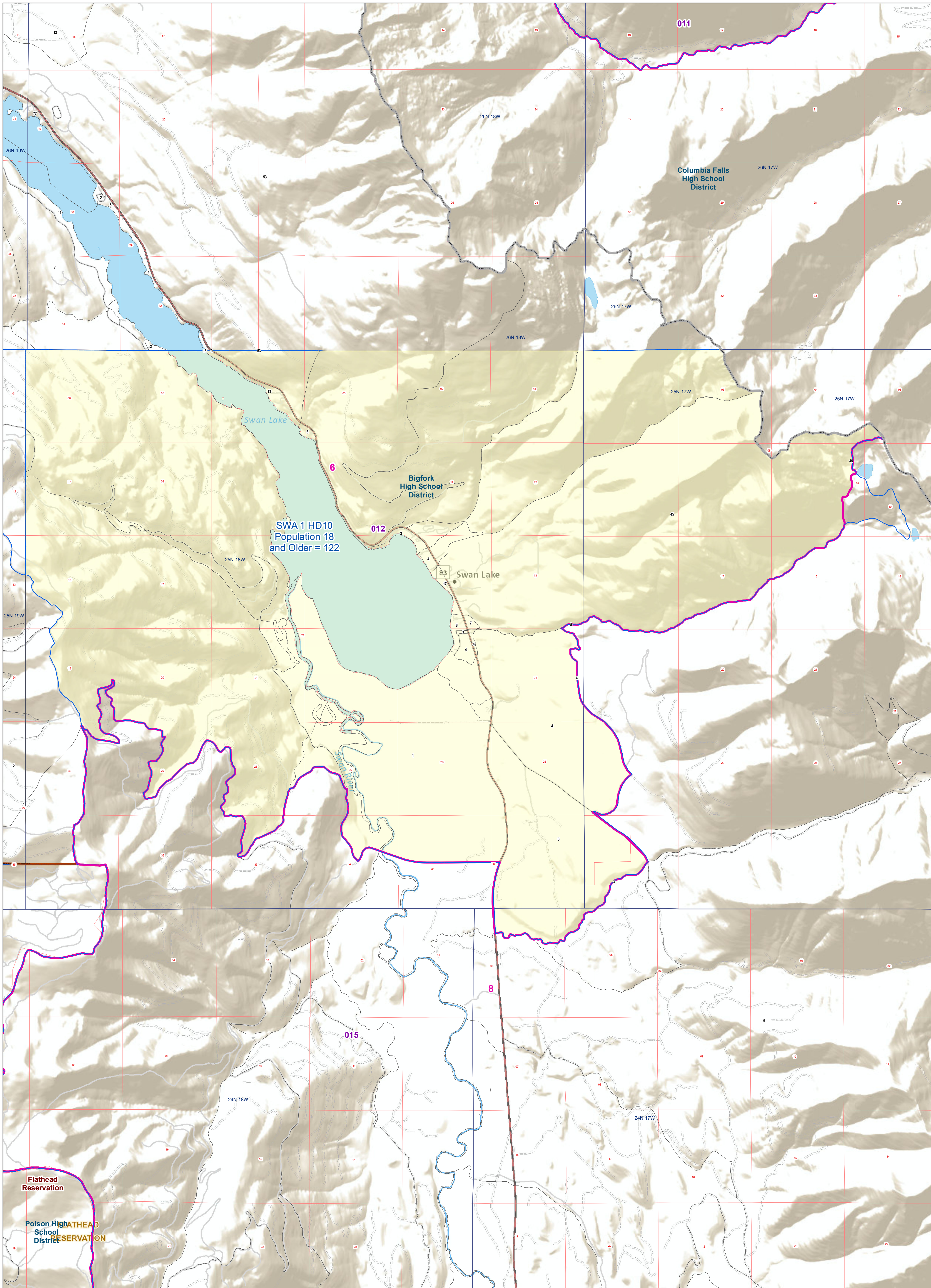
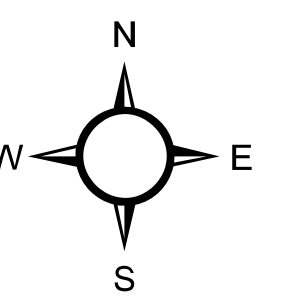


# Lake County: SWA 1 HD10

## Voting Precincts and Legislative Districts



- Voting Precincts
- Senate
- House
- Incorporated Cities and Towns
- Wards
- Tribal Nations Reservations
- Unified (K-12) School Districts
- Secondary School Districts
- Elementary School Districts
- 2020 Census Blocks with Population 18 and Older Labeled
- Township Boundary
- Section Boundary



Voting Precincts  
 Montana State Library  
 Created on 3/12/2023  
 Meghan Burns | [GeoEnabledElections@mt.gov](mailto:GeoEnabledElections@mt.gov)  
<https://geoenabled-elections-montana.hub.arcgis.com/>