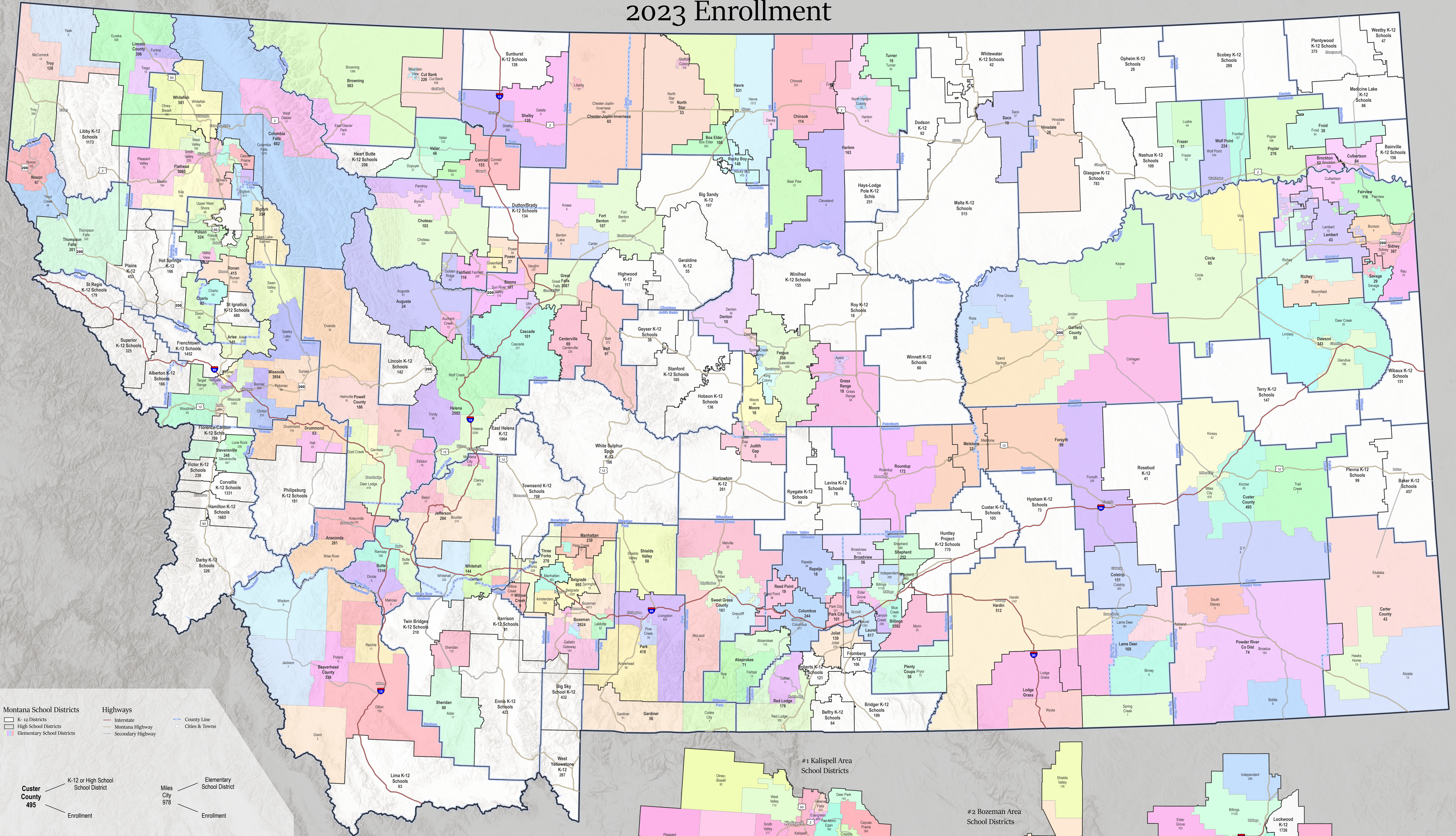


# Montana School Districts 2023 Enrollment



**Montana School Districts**

- K-12 Districts
- High School Districts
- Elementary School Districts

**Highways**

- Interstate
- Montana Highway
- Secondary Highway

**County Line**

- County Line
- Cities & Towns

**Custer County 495**

- K-12 or High School School District
- Enrollment

**Miles City 978**

- Elementary School District
- Enrollment

0 12.5 25 50 75 100 Miles

Montana School District Boundaries are a sub-theme of the Montana Spatial Data Infrastructure (MSDI) Administrative Boundaries Framework. The geospatial data are created and maintained by the Montana State Library. The Montana State Library partners with Montana County School Superintendents to reconcile school district boundary changes on an annual basis.

FY2023 OPI enrollment numbers from 03/07/2024. Districts with zero enrollment are non-operating districts.  
Source: <https://gens.opi.mt.gov/school-district-data>  
Source: MSDI School District Boundaries Data were last published January 2024.  
Projection: Montana State Plane NAD83 (2011)

