

Imagery for Land Cover, NG-911, and Geologic Hazards

Montana Imagery Summit 2023
Helena, MT





Dave Holm – Business Development/Program Manager



Alan Jacquez – Project Geoscientist



Angie Pelkie – Technical & Business Development Manager – Emergency Services



Janet Sowers – Project Geoscientist

An aerial night view of a city with a bridge. The city lights are reflected in the water. A blue wireframe overlay is visible on the bridge and the water. The word 'FUGRO' is written in white in the top right corner.

FUGRO

Introduction to Fugro

June 2021



Fugro's RapidSOS-ready SIMmetry™ connects common geospatial data into a 3D environment with easy-to-use tools for improved situational awareness enabling rapid response times for emergency dispatchers helping save lives.



3D visualization of community data



Connect to RapidSOS-ready SIMmetry™ 3D GIS



Access GIS tools for addressing, measuring, and interaction



Precisely locate a caller in a 3D environment



Provide locational intelligence to responders at the scene



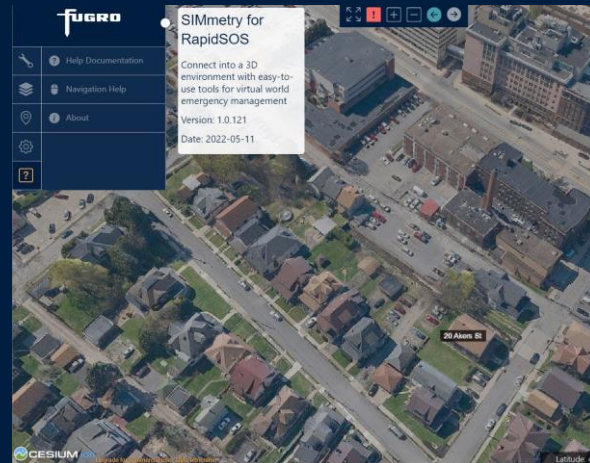
4 flexible solutions

Existing Data

New Collect



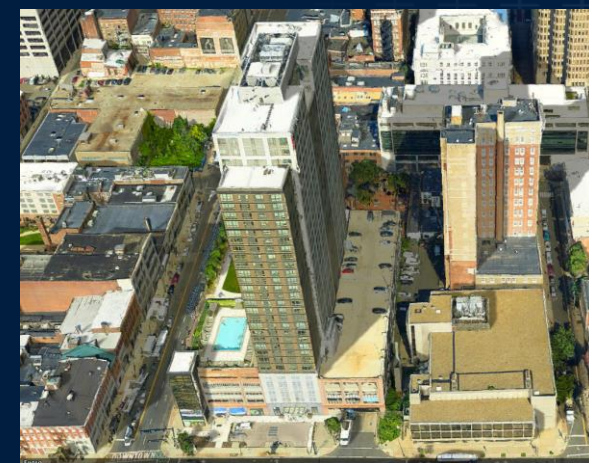
Existing LiDAR data



Existing Imagery







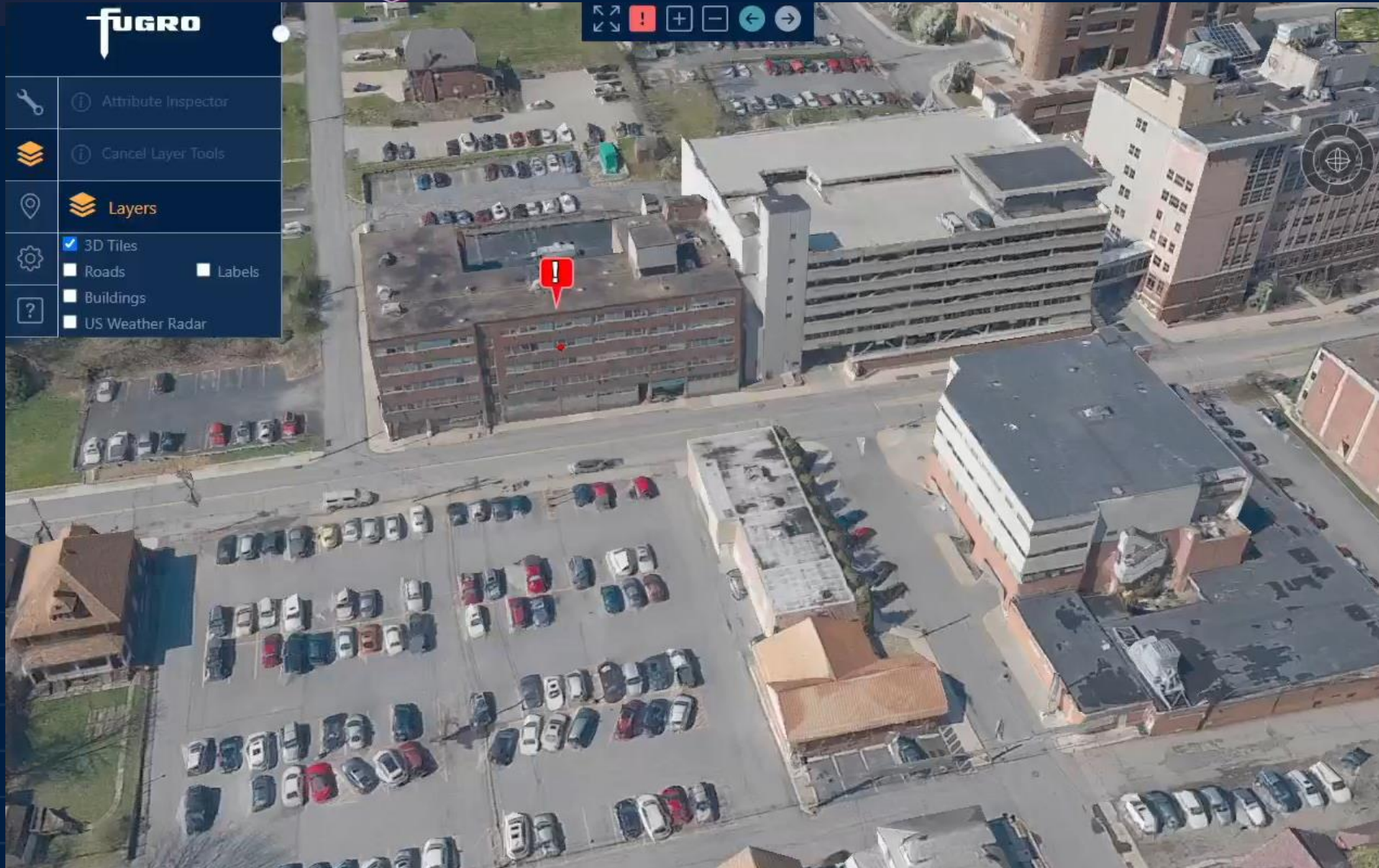
New LiDAR and imagery

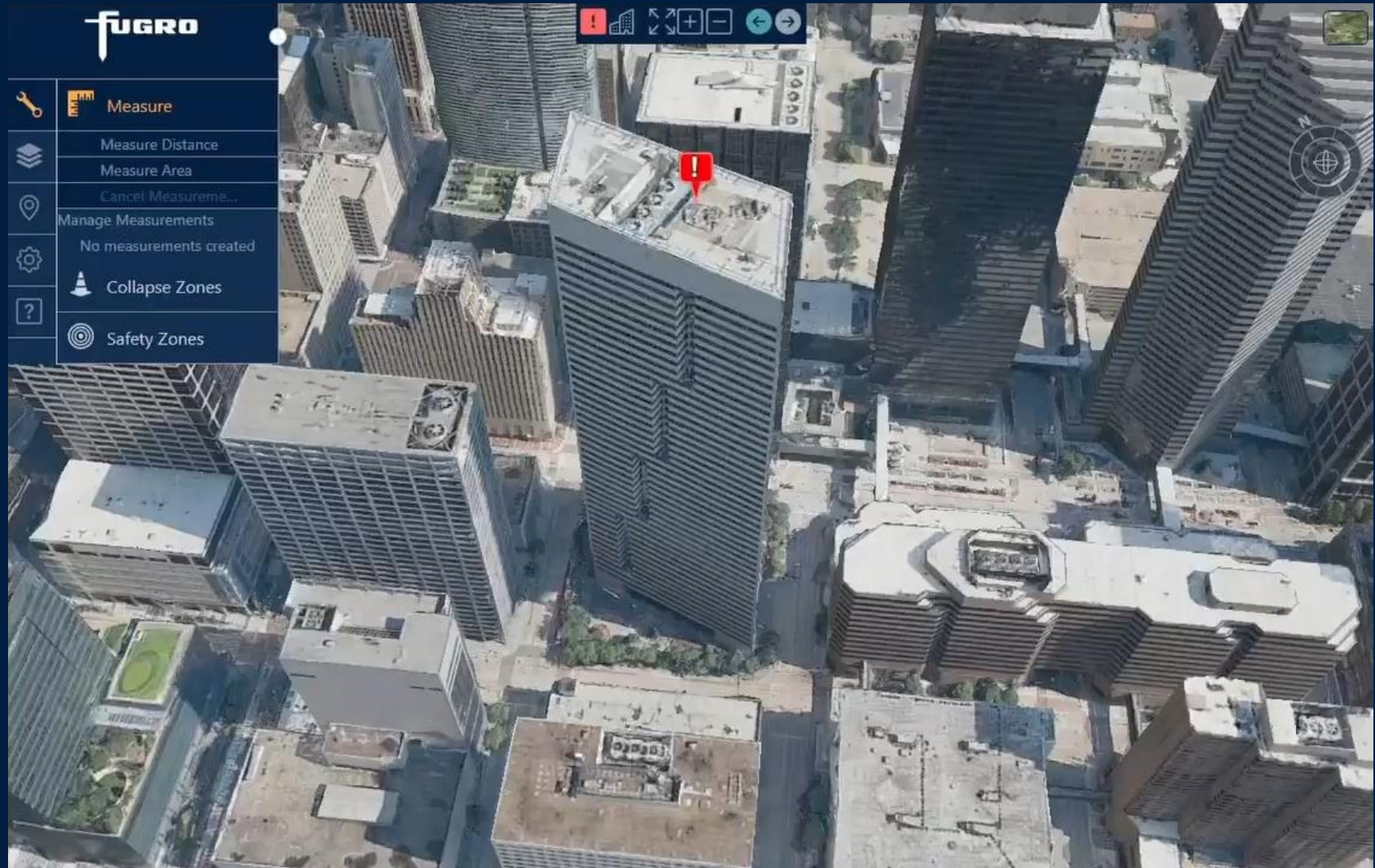


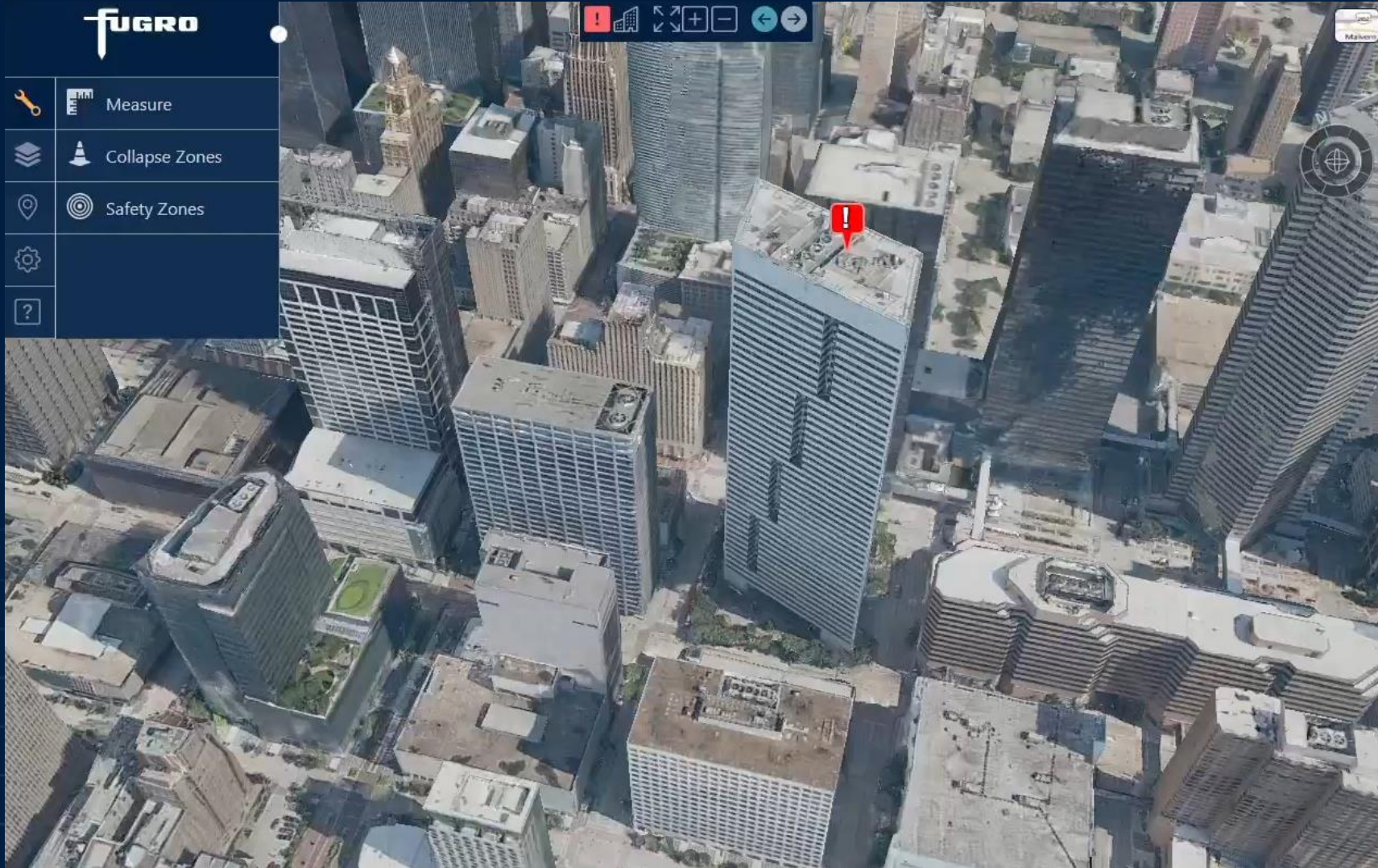
New imagery (oblique)

FUGRO

-  Attribute Inspector
-  Cancel Layer Tools
-  **Layers**
-  3D Tiles
- Roads Labels
- Buildings
- US Weather Radar







The logo for FUGRO features a large, stylized white letter 'F' on the left. The vertical stem of the 'F' is a long, downward-pointing arrowhead. To the right of the 'F', the word 'FUGRO' is written in a bold, white, sans-serif font.

FUGRO

Unlocking Insights
from **Geo-data**