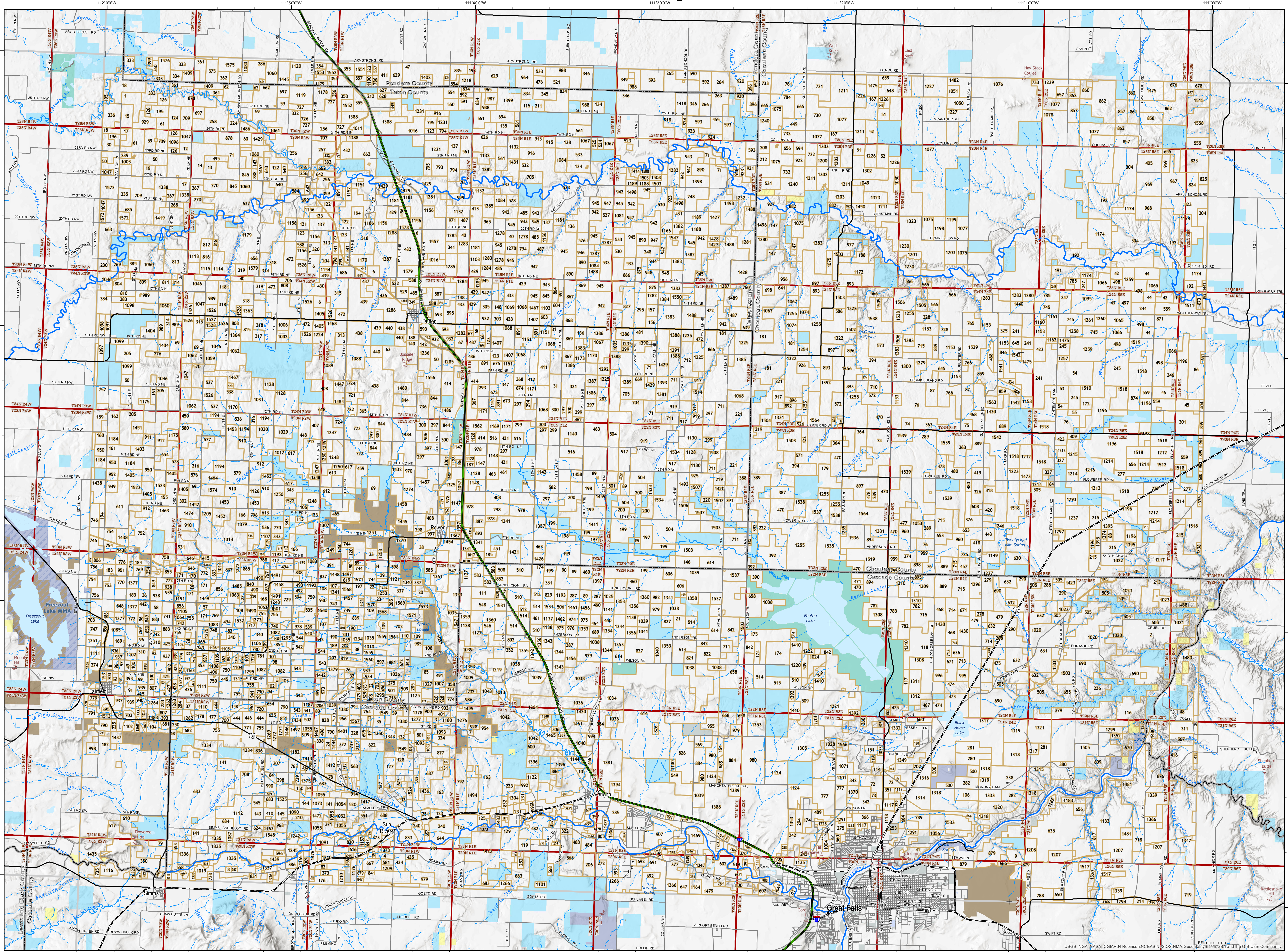


# Great Falls North - 47111b Private Land Ownership Identification



- BLM
- National Park Service
- Other Federal Lands
- US Fish and Wildlife Service
- US Forest Service
- MT Fish, Wildlife & Parks
- State Trust Lands
- Other State Lands
- Local Government
- Rural Parcels
- Wildlife Management Area
- Indian Reservations
- County Boundary
- Township
- Lakes - Reservoirs
- Interstate highway
- Major Highway
- Other Highway
- City-County Road
- Primitive Road
- River
- Stream/Creek
- Intermittent Creek

**SOURCES / ACKNOWLEDGEMENTS**

This map was produced as a joint effort between Montana Fish, Wildlife & Parks (FWP) and the Geographic Information Program (Geoinfo) of the Montana State Library (MSL), in response to Montana Code Annotated 87-3-308, which directs the FWP to "... work cooperatively with all state and federal land management agencies ... to develop accurate land ownership maps ... in the State."

**PLEASE READ - NOTES:**

Parcel label numbers correspond to the Private Land List which may be downloaded from the Map Gallery Web site: [http://apps.msl.mt.gov/Geographic\\_Information/Maps/Land\\_Ownership/Default.aspx](http://apps.msl.mt.gov/Geographic_Information/Maps/Land_Ownership/Default.aspx)

Not all legend items may appear on this map.

Features shown on this map do not imply public access to any lands.

The land status data displayed on this map may not be complete and may contain errors in boundary locations and/or coding.

**About the DATA:**

The private land data were developed for the Montana Cadastral Database Project. These data are provided through a cooperative effort between the Montana State Library - Geographic Information, the Montana Department of Revenue (DOR), other state agencies, local governments, USFS, BLM and private enterprise. Lands depicted on THIS MAP represent single ownership of contiguous parcels that are at least 40 acres in size. The MSL Geoinfo program maintains the GIS cadastral layer and the DOR maintains the private ownership information. The Montana Cadastral Database is comprised of taxable parcels (fee land) and public land (exempt property).

The public land data is from the Montana State Library public lands data collection. Much of this data was originally from a data cooperative effort between the Montana Department of Administration (DOA) and the Montana Department of Revenue (DOR) other state agencies, local governments, USFS, BLM and private enterprise. The data was grouped by very broad geographic categories for display on THIS MAP with general preference for types of land management that may be more friendly to hunting with appropriate permissions and regulations observed.

This map has not been verified against county or Montana Department of Revenue records.

The base scale for the public ownership data is 1:100,000, though many of the recent data incorporate data digitized from 1:24,000 scale maps or survey data. Private ownership data is accurate to scales of 1:24,000 or smaller.

Montana Spatial Data Infrastructure (MSDI) Data: Highways and Roads are Transportation Framework data, Rivers, Streams and Lakes are Montana FWP Data, enhanced by Montana National Hydrography Data, Parcel data from Department of Revenue (DOR) Cadastral data.

**DISCLAIMERS:**

The MT State Library, MT Natural Heritage Program, MT Fish, Wildlife & Parks, MT Dept. of Administration and MT Dept. of Revenue make NO representation or warranty whatsoever with respect to the accuracy or completeness of the data contained in these maps and assumes NO responsibility for the suitability of these data for a particular purpose.

These agencies will NOT be liable for any damages incurred as a result of errors displayed here.

The ownership boundaries depicted on this map are NOT based on land survey data and are NOT a substitute for property surveys. This map displays public and private land ownership information derived from several sources and continues to be corrected and updated.

48110b	48115b	48114b	48113b	48112b	48111b	48110a	48109b	48108b	48107b	48106b	48105b	48104b
48116a	48115a	48114a	48113a	48112a	48111a	48110a	48109a	48108a	48107a	48106a	48105a	48104a
47116b	47115b	47114b	47113b	47112b	47111b	47110b	47109b	47108b	47107b	47106b	47105b	47104b
47116a	47114a	47113a	47112a	47111a	47110a	47109a	47108a	47107a	47106a	47105a	47104a	
48110b	48115b	48114b	48113b	48112b	48111b	48110b	48109b	48108b	48107b	48106b	48105b	48104b
48116a	48115a	48114a	48113a	48112a	48111a	48110a	48109a	48108a	48107a	48106a	48105a	48104a
48114b	48113b	48112b	48111b	48110b	48109b	48108b	48107b	48106b	48105b	48104b		
48114a	48113a	48112a	48111a	48110a	48109a	48108a	48107a	48106a	48105a	48104a		
48113b	48112b	48111b	48110b	48109b	48108b	48107b	48106b	48105b	48104b			
48113a	48112a	48111a	48110a	48109a	48108a	48107a	48106a	48105a	48104a			