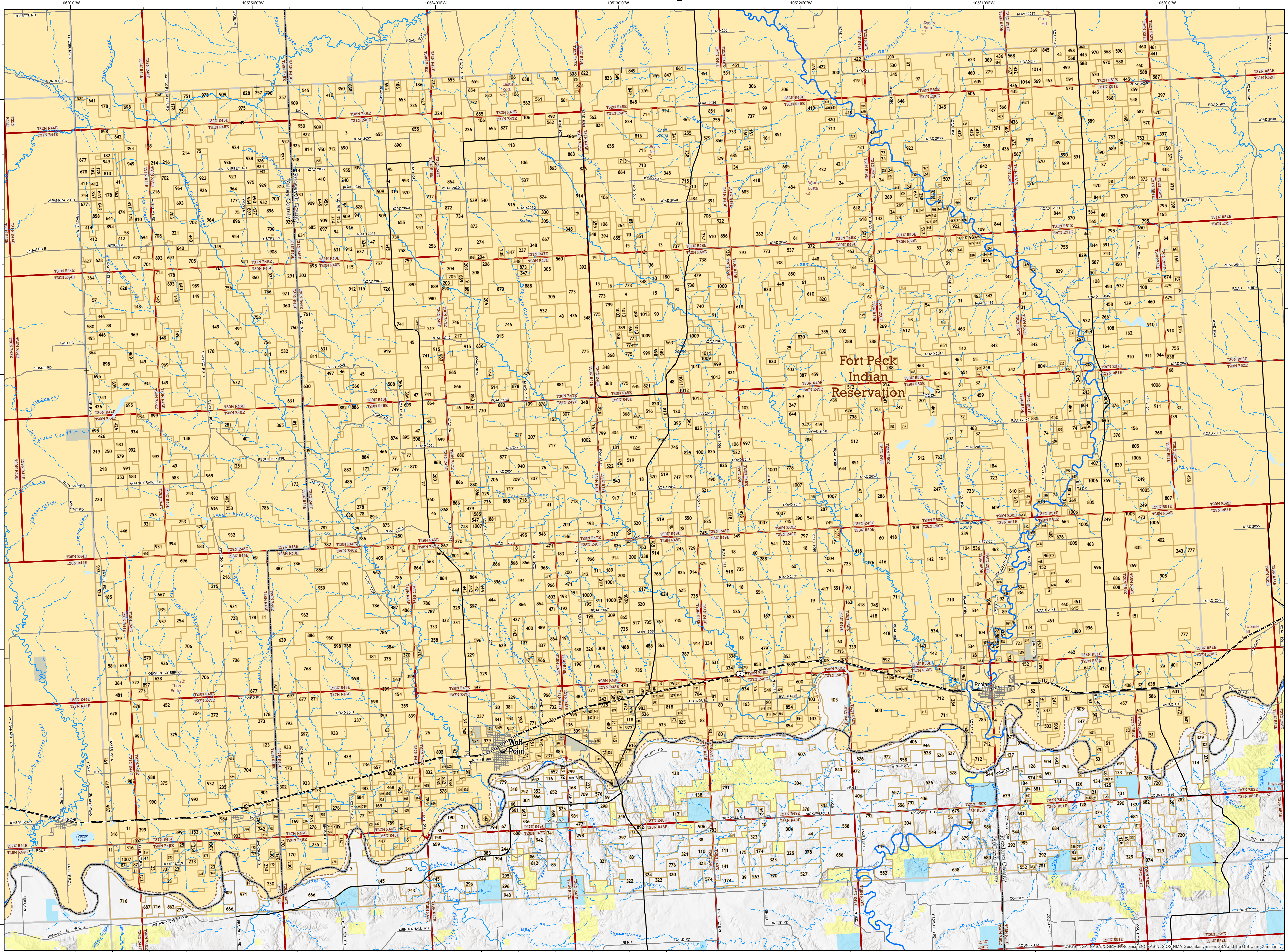


Wolf Point - 48105a Private Land Ownership Identification



- BLM
- National Park Service
- Other Federal Lands
- US Fish and Wildlife Service
- US Forest Service
- MT Fish, Wildlife & Parks
- State Trust Lands
- Other State Lands
- Local Government
- Rural Parcels
- Wildlife Management Area
- Indian Reservations
- County Boundary
- Township
- Lakes - Reservoirs
- Interstate highway
- Major Highway
- Other Highway
- City-County Road
- Primitive Road
- River
- Stream/Creek
- Intermittent Creek

SOURCES / ACKNOWLEDGEMENTS

This map was produced as a joint effort between Montana Fish, Wildlife & Parks (FWP) and the Geographic Information Program (Geoinfo) of the Montana State Library (MSL), in response to Montana Code Annotated 87-3-308, which directs the FWP to "... work cooperatively with all state and federal land management agencies ... to develop accurate land ownership maps ... in the State."

PLEASE READ - NOTES:

Parcel label numbers correspond to the Private Land List which may be downloaded from the Map Gallery Web site. http://apps.msl.mt.gov/Geographic_Information/Maps/PrivateLand_Ownership/Default.aspx

Not all legend items may appear on this map. Features shown on this map do not imply public access to any lands. The land status data displayed on this map may not be complete and may contain errors in boundary locations and/or coding.

About the DATA:

The private land data were developed for the Montana Cadastral Database Project. These data are provided through a cooperative effort between the Montana State Library - Geographic Information, the Montana Department of Revenue (DOR), other state agencies, local governments, USFS BLM and private enterprise. Lands depicted on THIS MAP represent single ownership of contiguous parcels that are at least 40 acres in size. The MSL Geoinfo program maintains the GIS Cadastral layer and the DOR maintains the private ownership information. The Montana Cadastral Database is comprised of taxable parcels (fee land) and public land (exempt property).

The public land data is from the Montana State Library public lands data collection. Much of this data was originally from a data cooperative effort between the Montana Department of Administration (DOA) and the Montana Department of Revenue (DOR) other state agencies, local governments, USFS BLM and private enterprise. The data was grouped by very broad government categories for display on THIS MAP with general preference for types of land management that may be more friendly to hunting with appropriate permissions and regulations observed.

This map has not been verified against county or Montana Department of Revenue records. The base scale for the public ownership data is 1:100,000, though many of the recent edits incorporate data digitized from 1:24,000 scale maps or survey data. Private ownership data is accurate to scales of 1:24,000 or smaller.

Montana Spatial Data Infrastructure (MSDI) Data: Highways and Roads are Transportation Framework data. Rivers, Streams and Lakes are Montana FWP Data, enhanced by Montana National Hydrography Data. Parcel data from Department of Revenue (DOR) Cadastral data.

DISCLAIMERS:

The MT State Library, MT Natural Heritage Program, MT Fish, Wildlife & Parks, MT Dept. of Administration and MT Dept. of Revenue make NO representation or warranty with respect to the accuracy or completeness of the data contained in these maps and assumes NO responsibility for the suitability of these data for a particular purpose.

These agencies will NOT be liable for any damages incurred as a result of errors displayed here. The ownership boundaries displayed on this map are NOT based on land survey data and are NOT a substitute for property surveys. This map displays public and private land ownership information derived from several sources and continues to be corrected and updated.

48100b	48105b	48110b	48115b	48120b	48125b	48130b	48135b	48140b	48145b
48100a	48105a	48110a	48115a	48120a	48125a	48130a	48135a	48140a	48145a
47100b	47105b	47110b	47115b	47120b	47125b	47130b	47135b	47140b	47145b
47100a	47105a	47110a	47115a	47120a	47125a	47130a	47135a	47140a	47145a
46100b	46105b	46110b	46115b	46120b	46125b	46130b	46135b	46140b	46145b
46100a	46105a	46110a	46115a	46120a	46125a	46130a	46135a	46140a	46145a
45100b	45105b	45110b	45115b	45120b	45125b	45130b	45135b	45140b	45145b
45100a	45105a	45110a	45115a	45120a	45125a	45130a	45135a	45140a	45145a
44100b	44105b	44110b	44115b	44120b	44125b	44130b	44135b	44140b	44145b
44100a	44105a	44110a	44115a	44120a	44125a	44130a	44135a	44140a	44145a