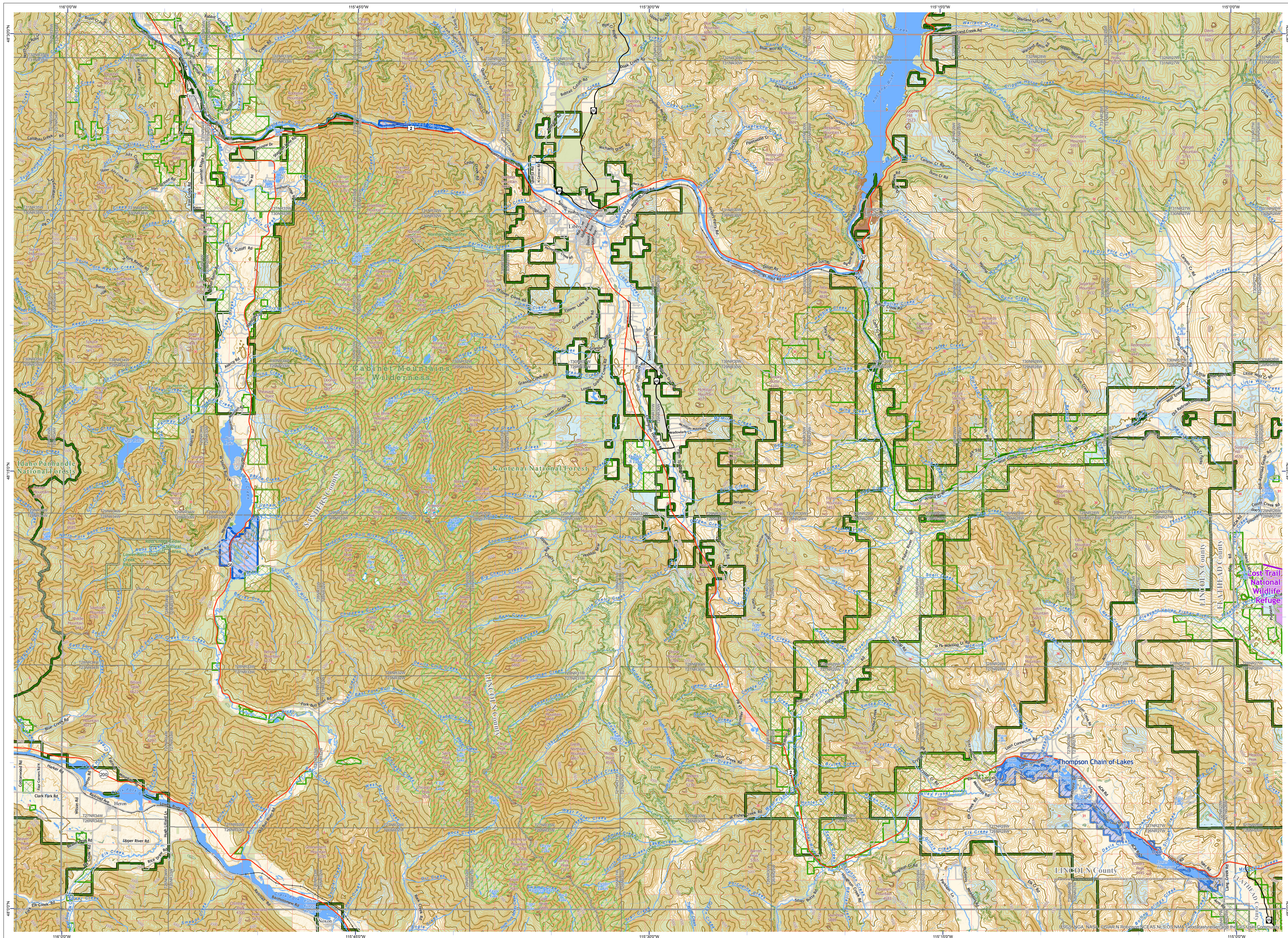


Libby Quadrangle - 48115a Montana Public Land & Management Map



Public Ownership on this Map

US Fish and Wildlife Service	MT State Trust Lands
US Forest Service	MT Dept of Transportation
US Army Corps of Engineers	Other State of Montana
MT Fish Wildlife & Parks	Local Government

Management Areas on this Map

Conservation Easement	USFWS National Wildlife Refuge
Montana Fish Wildlife & Parks, Wildlife Management Area	USFS National Forest
USFWS National Wildlife Refuge	USFS Natural Area
USFS National Forest	USFS Wilderness

Scale 1:100,000
1 inch equals 1.57 miles

Notice: This map is not intended as a legal depiction of public or private land boundaries.

Montana Public Ownership and Management Types, not necessarily present on this map

US Bureau of Land Management	MT Fish Wildlife & Parks	Conservation Easement	BLM Wild & Scenic River
US Fish and Wildlife Service	MT State Trust Lands	Montana Fish Wildlife & Parks, State Park	BLM Wilderness Area
US Forest Service	MT Dept of Corrections	Montana Fish Wildlife & Parks, Wildlife Management Area	BLM - Wilderness Study Area
US Dept of Agriculture	MT Dept of Transportation	USFS National Forest	USFS National Forest
National Park Service	MT Dept of Natural Resources	State Forest	USFS Natural Area
US Army Corps of Engineers	Montana University System	USFWS Fish Tech Center	USFS Wild and Scenic River
US Bureau of Reclamation	Other State of Montana	National Fish Hatchery	USFS Wilderness
US Dept of Defense	Local Government	USFWS Wildlife Management Area	USFS Wilderness
		USFWS Wildlife Refuge	

CAUTION:

- Not all legend items may appear on this map.
- Some Public Land data types were symbolized together by broad government categories for display on this map.
- Land management features shown on this map are not intended as a legal depiction of public or private surface and ownership boundaries and should not be used in place of a survey conducted by a licensed land surveyor.
- Public ownership of land does not imply public access. Not all public parcels or roads shown on this map are open to the public. Inquire locally to learn if you can enter certain land parcels or drive on certain road. **Ask first!**
- Map features shown, including conservation easements AND ROADS, do not imply public access to any lands.

MAP DISCLAIMER:
The Montana State Library Geographic Information Services provides this product/service for informational purposes only. The Library did not produce it for, nor is it suitable for legal, engineering, or surveying purposes. Consumers of this information should review or consult the primary data and information sources to ascertain the viability of the information for their purposes. The Library provides these data in good faith but does not represent or warrant its accuracy, adequacy, or completeness. In no event shall the Library be liable for any incorrect results or analysis; any direct, indirect, special, or consequential damages to any party; or any lost profits arising out of or in connection with the use of the inability to use the data or the services provided. The Library makes these data and services available as a convenience to the public, and for no other purpose. The Library reserves the right to change or revise published data and/or services at any time.

For questions about the data displayed here or to report errors, please contact the Montana State Library at: 406-444-5354 or geoinfo@mt.gov.

SOURCE INFORMATION:
Public Land data: Montana State Library
Land Management data: Montana State Library, U.S. Forest Service, U.S. Fish and Wildlife Service, Bureau of Land Management, Montana Fish, Wildlife & Parks
Base map data: Montana Spatial Data Infrastructure (MSDI), including Transportation, Elevation, Hydrography, Public Land Survey System, Administrative Boundaries, Geographic Names, and Cadastral datasets

Montana Public Land Map Series Index

48115a	48115b	48115c	48115d	48115e	48115f	48115g	48115h	48115i	48115j	48115k	48115l	48115m	48115n	48115o	48115p	48115q	48115r	48115s	48115t	48115u	48115v	48115w	48115x	48115y	48115z
--------	--------	--------	--------	--------	--------	--------	--------	--------	--------	--------	--------	--------	--------	--------	--------	--------	--------	--------	--------	--------	--------	--------	--------	--------	--------

Visit the Geographic Information Program web site at: <http://geoinfo.mst.mt.gov>

Document Name: 100Kpub2016

Date: 8/26/2016

Author: Duane F. Lind