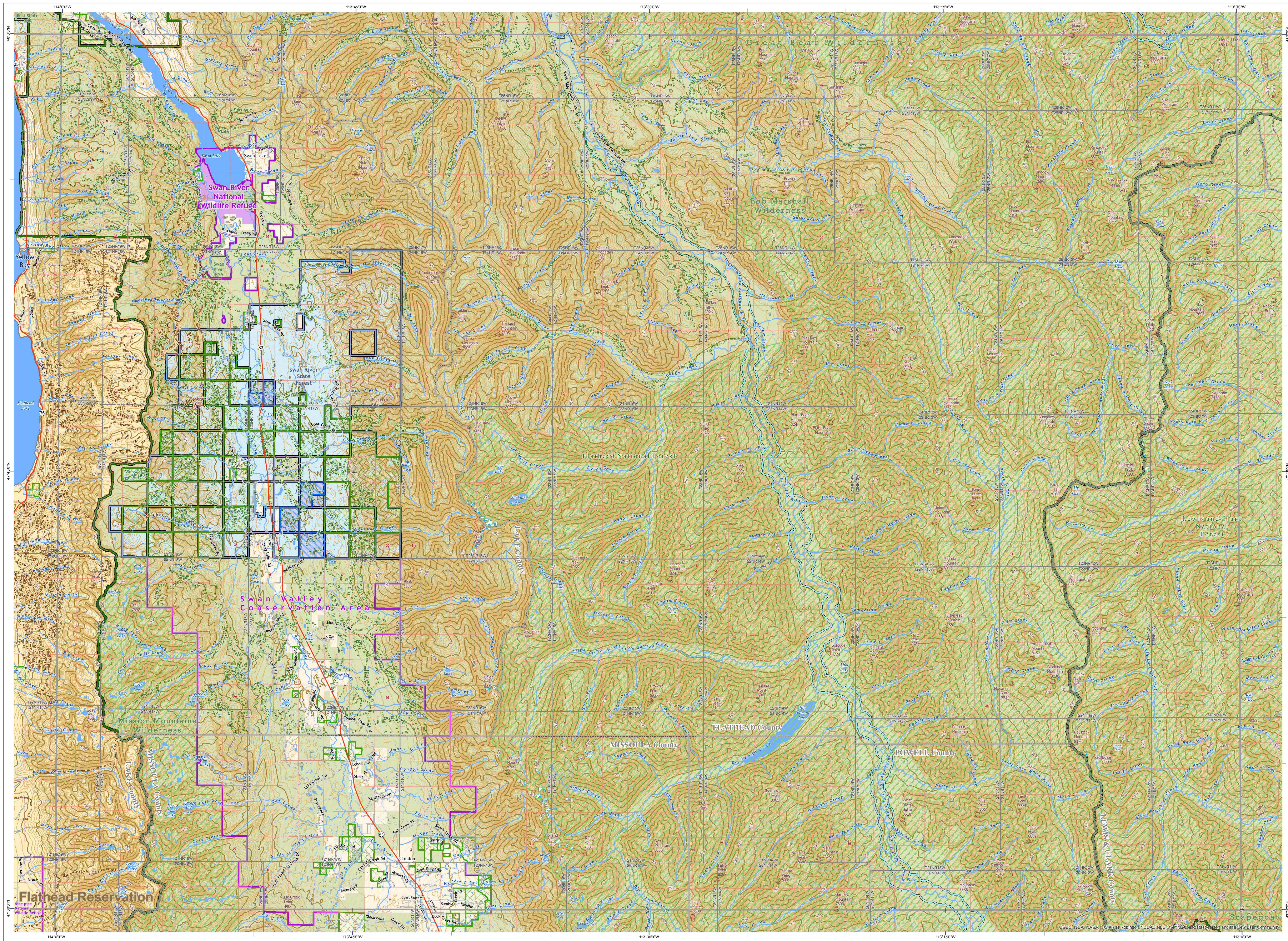


# Swan Peak Quadrangle - 47113b Montana Public Land & Management Map

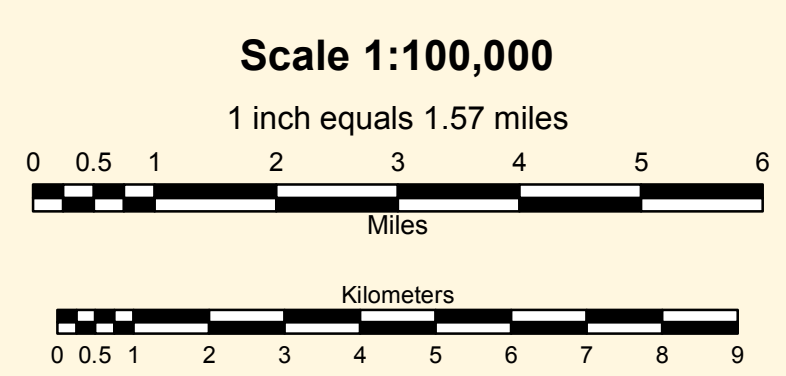


**Public Ownership on this Map**

US Fish and Wildlife Service	MT State Trust Lands
US Forest Service	MT Dept of Transportation
MT Fish Wildlife & Parks	Local Government

**Management Areas on this Map**

Conservation Easement	Montana Fish Wildlife & Parks, Wildlife Management Area
Montana Fish Wildlife & Parks, Wildlife Management Area	Montana State Forest
Montana State Forest	USFWS National Wildlife Refuge
USFWS National Wildlife Refuge	USFS National Forest
USFS National Forest	USFS Natural Area
USFS Natural Area	USFS, Wild and Scenic River
USFS, Wild and Scenic River	USFS Wilderness
USFS Wilderness	



**Notice: This map is not intended as a legal depiction of public or private land boundaries.**

**Montana Public Ownership and Management Types, not necessarily present on this map**

US Bureau of Land Management	MT Fish Wildlife & Parks	Conservation Easement	BLM Wild & Scenic River
MT State Trust Lands	Montana Fish Wildlife & Parks, State Park	Montana Fish Wildlife & Parks, Wildlife Management Area	BLM Wilderness Area
US Forest Service	Montana Fish Wildlife & Parks, Wildlife Management Area	Montana State Forest	BLM Wilderness Study Area
US Dept of Agriculture	Montana State Forest	US Army Corps of Engineers	USFS National Forest
MT Dept of Transportation	USFS National Forest	Montana University System	USFS Natural Area
National Park Service	Montana University System	Other State of Montana	USFS Wild and Scenic River
US Army Corps of Engineers	Other State of Montana	Local Government	USFS Wilderness
Montana University System	Local Government		

**CAUTION:**

- Not all legend items may appear on this map.
- Some Public Land data types were symbolized together by broad government categories for display on this map.
- Land management features shown on this map are not intended as a legal depiction of public or private surface and ownership boundaries and should not be used in place of a survey conducted by a licensed land surveyor.
- Public ownership of land does not imply public access. Not all public parcels or roads shown on this map are open to the public. Inquire locally to learn if you can enter certain land parcels or drive on certain road. **Ask first!**
- Map features shown, including conservation easements AND ROADS, do not imply public access to any lands.

**MAP DISCLAIMER:**  
The Montana State Library Geographic Information Services provides this product/service for informational purposes only. The Library did not produce it for, nor is it suitable for legal, engineering, or surveying purposes. Consumers of this information should review or consult the primary data and information sources to ascertain the viability of the information for their purposes. The Library provides these data in good faith but does not represent or warrant its accuracy, adequacy, or completeness. In no event shall the Library be liable for any incorrect results or analysis; any direct, indirect, special, or consequential damages to any party; or any lost profits arising out of or in connection with the use or the inability to use the data or the services provided. The Library makes these data and services available as a convenience to the public, and for no other purpose. The Library reserves the right to change or revise published data and/or services at any time.

For questions about the data displayed here or to report errors, please contact the Montana State Library at: 406-444-5354 or [geoinfo@mt.gov](mailto:geoinfo@mt.gov).

**SOURCE INFORMATION:**  
Public Land data: Montana State Library  
Land Management data: Montana State Library, U.S. Forest Service, U.S. Fish and Wildlife Service, Bureau of Land Management, Montana Fish, Wildlife & Parks  
Base map data: Montana Spatial Data Infrastructure (MSDI) including Transportation, Elevation, Hydrography, Public Land Survey System, Administrative Boundaries, Geographic Names, and Cadastral datasets

