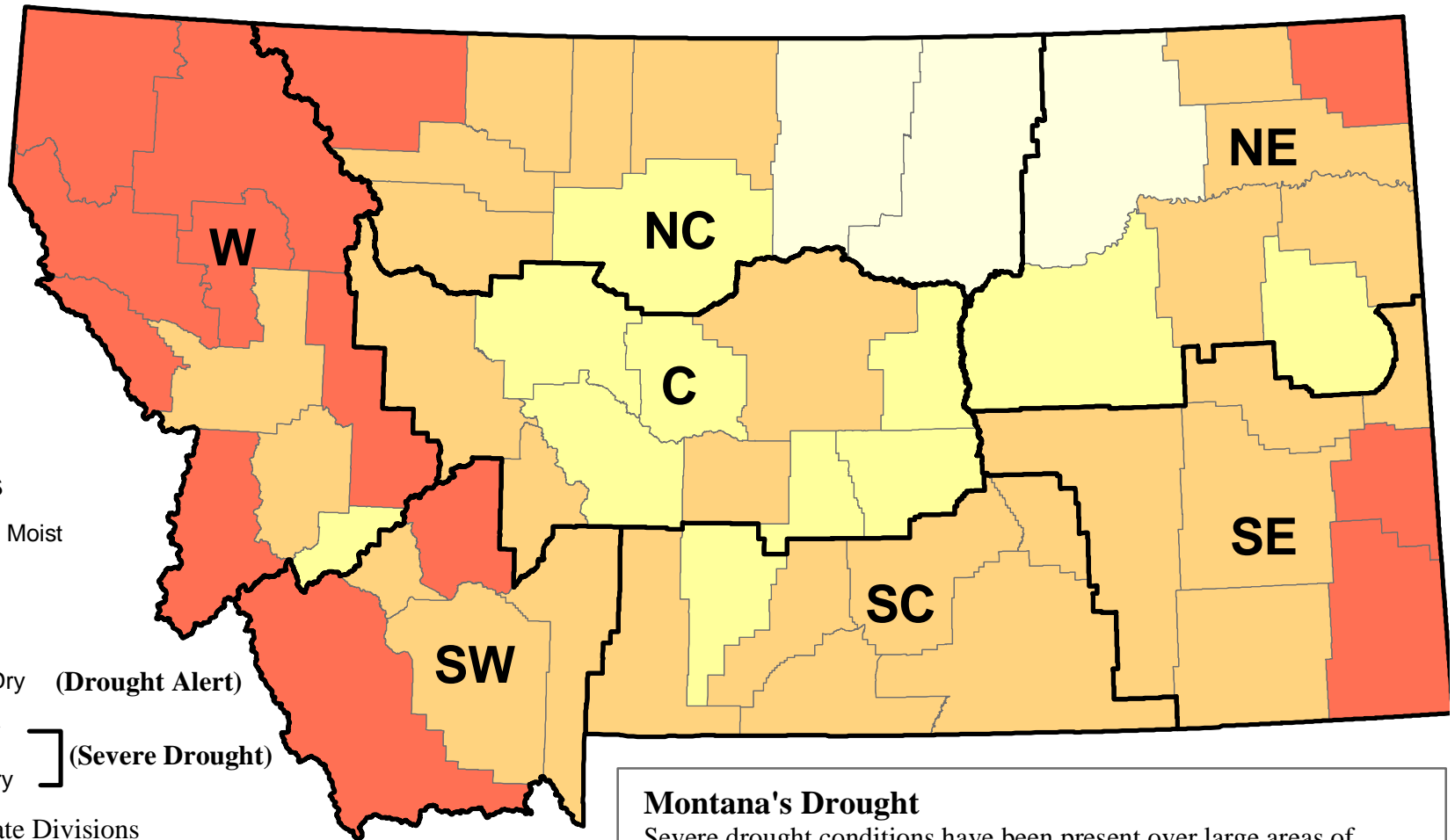


Montana Drought Status by County - May, 2005



Drought Alert - Governor's Drought Advisory Committee strongly encourages local officials to convene local drought committees.

Severe Drought - Local officials should have local drought planning efforts underway or should reconvene the local drought committee at the earliest opportunity.

For recommended responses, see the Drought Response Plan.

Montana's Drought

Severe drought conditions have been present over large areas of Montana for four or more consecutive years. Long-term drought impacts, including low soil moisture, reservoir storage, groundwater, and forest fuel moisture levels, continue to exist in areas where short-term relief may be present or develop.

The Governor's Drought Advisory Committee determines a monthly drought status for counties between March and October. The drought status map is used to alert counties to drought conditions so they may respond appropriately.

For more information regarding the determination of the drought status or the activities of the Drought Advisory Committee visit: <http://nris.state.mt.us/drought/>