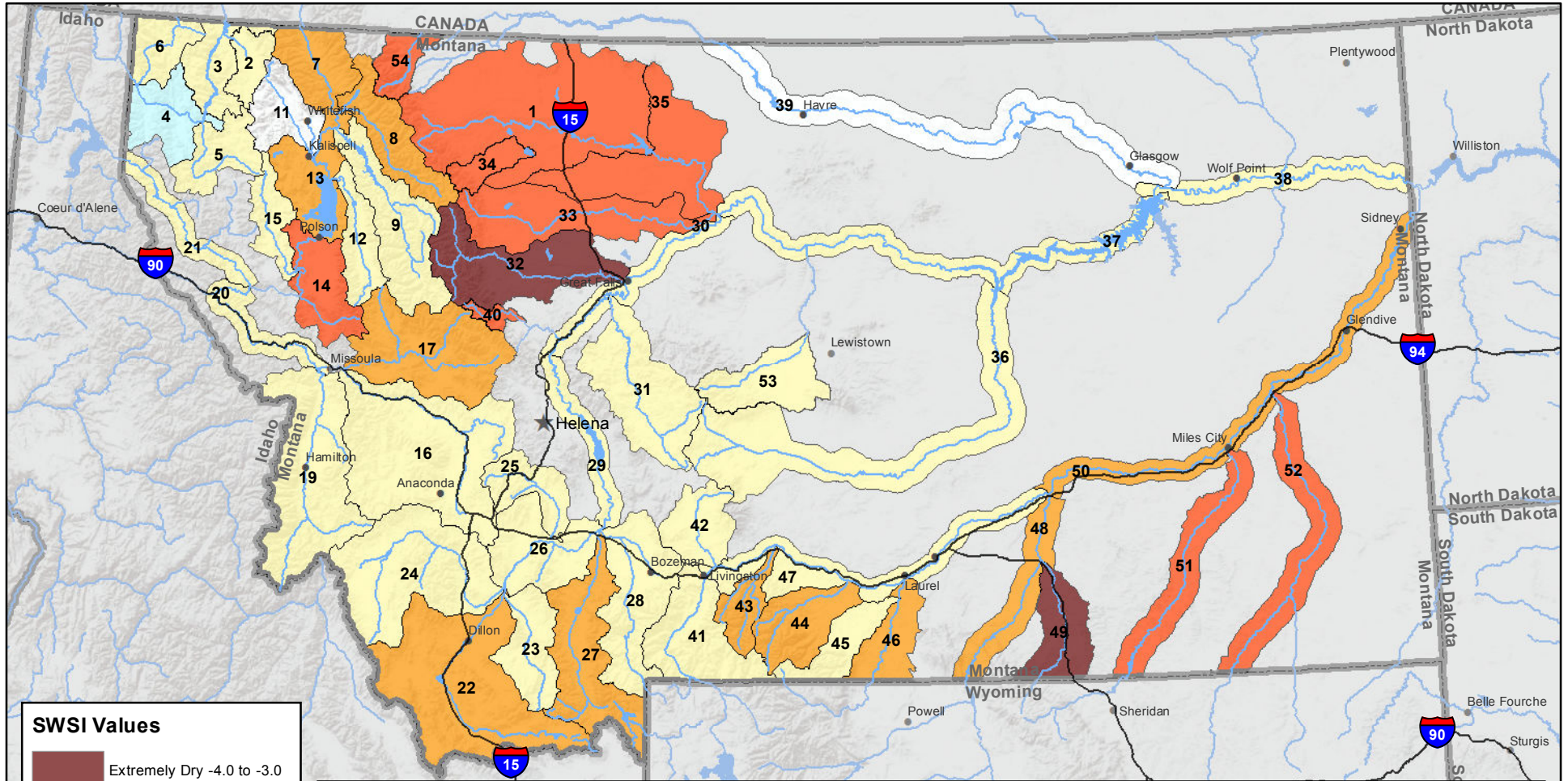
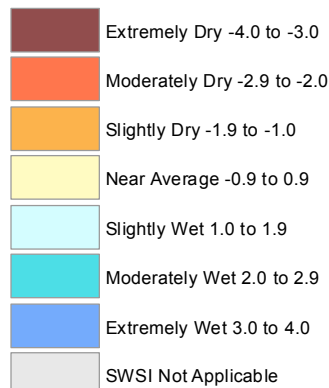


Montana Data Collection Office Surface Water Supply Index (SWSI) February 1, 2016



SWSI Values



RIVER INDEX & SWSI VALUES

1 Marias above Tiber Reservoir -2.6	16 Clark Fork above Milltown 0.6	30 Missouri below Canyon Ferry -0.4	45 Rock/Red Lodge Creeks -0.8
2 Tobacco -0.1	17 Blackfoot -1.2	31 Smith 0.2	46 Clarks Fork Yellowstone -1.2
3 Kootenai Ft. Steele to Libby Dam 0.8	18 Clark Fork above Missoula -0.8	32 Sun -3.6	47 Yellowstone above Bighorn River -0.8
4 Kootenai below Libby Dam 1.6	19 Bitterroot -0.1	33 Teton -2.6	48 Bighorn below Bighorn Lake -1.7
5 Fisher -0.6	20 Clark Fork River below Bitterroot -0.6	34 Birch/Dupuyer Creeks -2.8	49 Little Bighorn -3.3
6 Yaak 0.6	21 Clark Fork River below Flathead -0.8	35 Marias -2.4	50 Yellowstone below Bighorn -1.2
7 North Fk. Flathead -1.2	22 Beaverhead -1.2	36 Musselshell -0.1	51 Tongue -2.8
8 Middle Fk. Flathead -1.2	23 Ruby -0.1	37 Missouri above Fort Peck -0.9	52 Powder -2.9
9 South Fk. Flathead -0.4	24 Big Hole 0.8	38 Missouri below Fort Peck -0.1	53 Upper Judith 0.5
10 Flathead at Columbia Falls -0.6	25 Boulder (Jefferson) 0.3	40 Dearborn near Craig -2.1	54 Saint Mary -2
12 Swan 0.1	26 Jefferson 0.1	41 Yellowstone above Livingston -0.6	
13 Flathead at Polson -1	27 Madison -1	42 Shields 0.1	
14 Mission Valley -2	28 Gallatin -0.8	43 Boulder (Yellowstone) -1.9	
15 Little Bitterroot -0.5	29 Missouri above Canyon Ferry -0.4	44 Stillwater -1.7	

Note: Data used to generate this map are PROVISIONAL and SUBJECT TO CHANGE