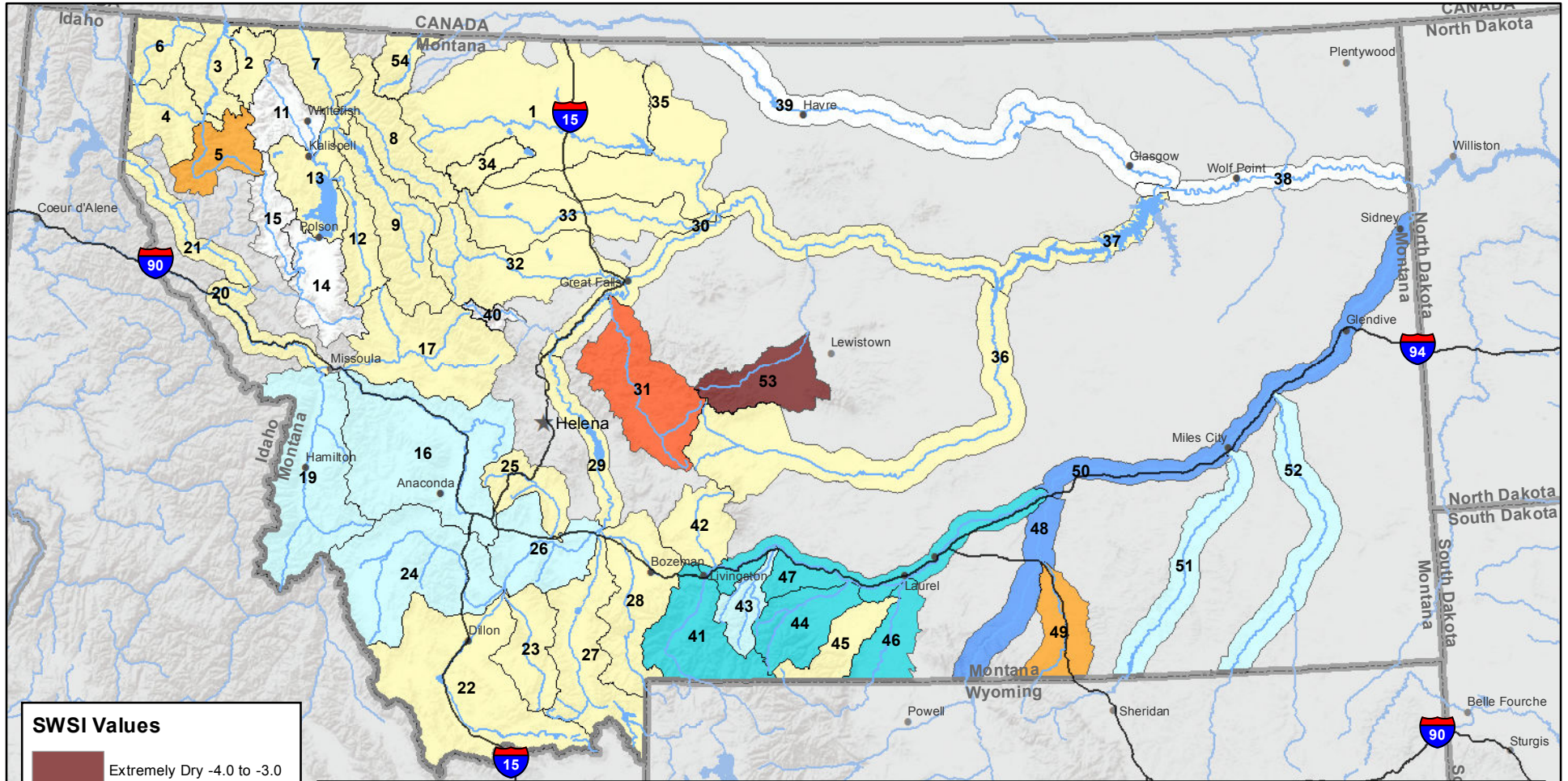
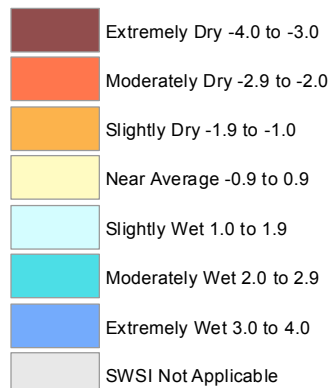


Montana Data Collection Office Surface Water Supply Index (SWSI) August 1, 2017



SWSI Values



RIVER INDEX & SWSI VALUES

1 Marias above Tiber Reservoir -0.5	16 Clark Fork above Milltown 1	30 Missouri below Canyon Ferry 0	45 Rock/Red Lodge Creeks 0.9
2 Tobacco -0.3	17 Blackfoot 0.5	31 Smith -2.3	46 Clarks Fork Yellowstone 2.8
3 Kootenai Ft. Steele to Libby Dam 0.9	18 Clark Fork above Missoula 0.7	32 Sun -0.4	47 Yellowstone above Bighorn River 2.3
4 Kootenai below Libby Dam 0.4	19 Bitterroot 1.4	33 Teton -0.4	48 Bighorn below Bighorn Lake 3.8
5 Fisher -1	20 Clark Fork River below Bitterroot 0.9	34 Birch/Dupuyer Creeks 0	49 Little Bighorn -1.2
6 Yaak 0	21 Clark Fork River below Flathead 0.8	35 Marias 0.2	50 Yellowstone below Bighorn 3
7 North Fk. Flathead 0.9	22 Beaverhead 0.5	36 Musselshell -0.5	51 Tongue 1.4
8 Middle Fk. Flathead 0.5	23 Ruby -0.9	37 Missouri above Fort Peck -0.7	52 Powder 1
9 South Fk. Flathead 0.5	24 Big Hole 1.7	38 Missouri below Fort Peck	53 Upper Judith -3.5
10 Flathead at Columbia Falls 0.4	25 Boulder (Jefferson) 0	40 Dearborn near Craig	54 Saint Mary 0.2
12 Swan 0.9	26 Jefferson 1	41 Yellowstone above Livingston 2.4	
13 Flathead at Polson 0.7	27 Madison 0.9	42 Shields 0.4	
14 Mission Valley	28 Gallatin -0.9	43 Boulder (Yellowstone) 1.4	
15 Little Bitterroot	29 Missouri above Canyon Ferry 0.4	44 Stillwater 2.6	

Note: Data used to generate this map are PROVISIONAL and SUBJECT TO CHANGE