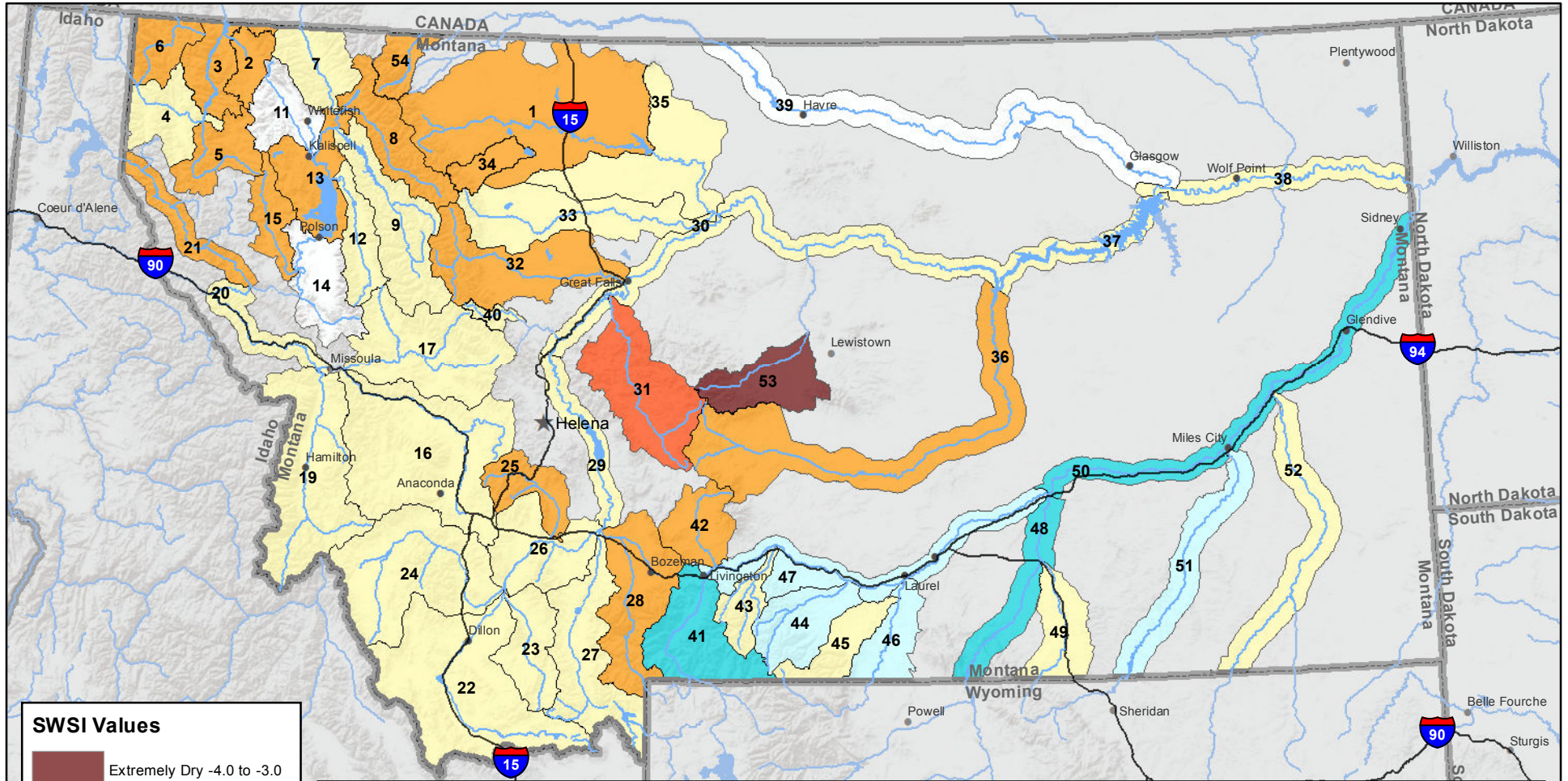
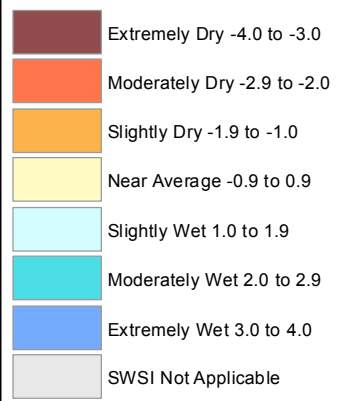


# Montana Data Collection Office Surface Water Supply Index (SWSI) September 1, 2017



### SWSI Values



### RIVER INDEX & SWSI VALUES

1 Marias above Tiber Reservoir -1.22	16 Clark Fork above Milltown 0.17	30 Missouri below Canyon Ferry -0.87	45 Rock/Red Lodge Creeks 0.87
2 Tobacco -1.04	17 Blackfoot -0.69	31 Smith -2.27	46 Clarks Fork Yellowstone 1.74
3 Kootenai Ft. Steele to Libby Dam -1.56	18 Clark Fork above Missoula -0.52	32 Sun -1.74	47 Yellowstone above Bighorn River 1.74
4 Kootenai below Libby Dam -0.91	19 Bitterroot -0.52	33 Teton -0.76	48 Bighorn below Bighorn Lake 2.12
5 Fisher -1.74	20 Clark Fork River below Bitterroot -0.52	34 Birch/Dupuyer Creeks -1.39	49 Little Bighorn 0
6 Yaak -1.25	21 Clark Fork River below Flathead -1.19	35 Marias 0.52	50 Yellowstone below Bighorn 2.12
7 North Fk. Flathead -0.69	22 Beaverhead 0.17	36 Musselshell -1.74	51 Tongue 1.56
8 Middle Fk. Flathead -1.39	23 Ruby -0.69	37 Missouri above Fort Peck -0.63	52 Powder -0.87
9 South Fk. Flathead -0.69	24 Big Hole 0.35	38 Missouri below Fort Peck -0.17	53 Upper Judith -3.7
10 Flathead at Columbia Falls -0.52	25 Boulder (Jefferson) -1.22	40 Dearborn near Craig -0.83	54 Saint Mary -1.22
12 Swan -0.87	26 Jefferson 0.21	41 Yellowstone above Livingston 2.43	
13 Flathead at Polson -1.56	27 Madison 0	42 Shields -1.04	
14 Mission Valley	28 Gallatin -1.56	43 Boulder (Yellowstone) 0.17	
15 Little Bitterroot -1	29 Missouri above Canyon Ferry -0.17	44 Stillwater 1.04	

Note: Data used to generate this map are PROVISIONAL and SUBJECT TO CHANGE

