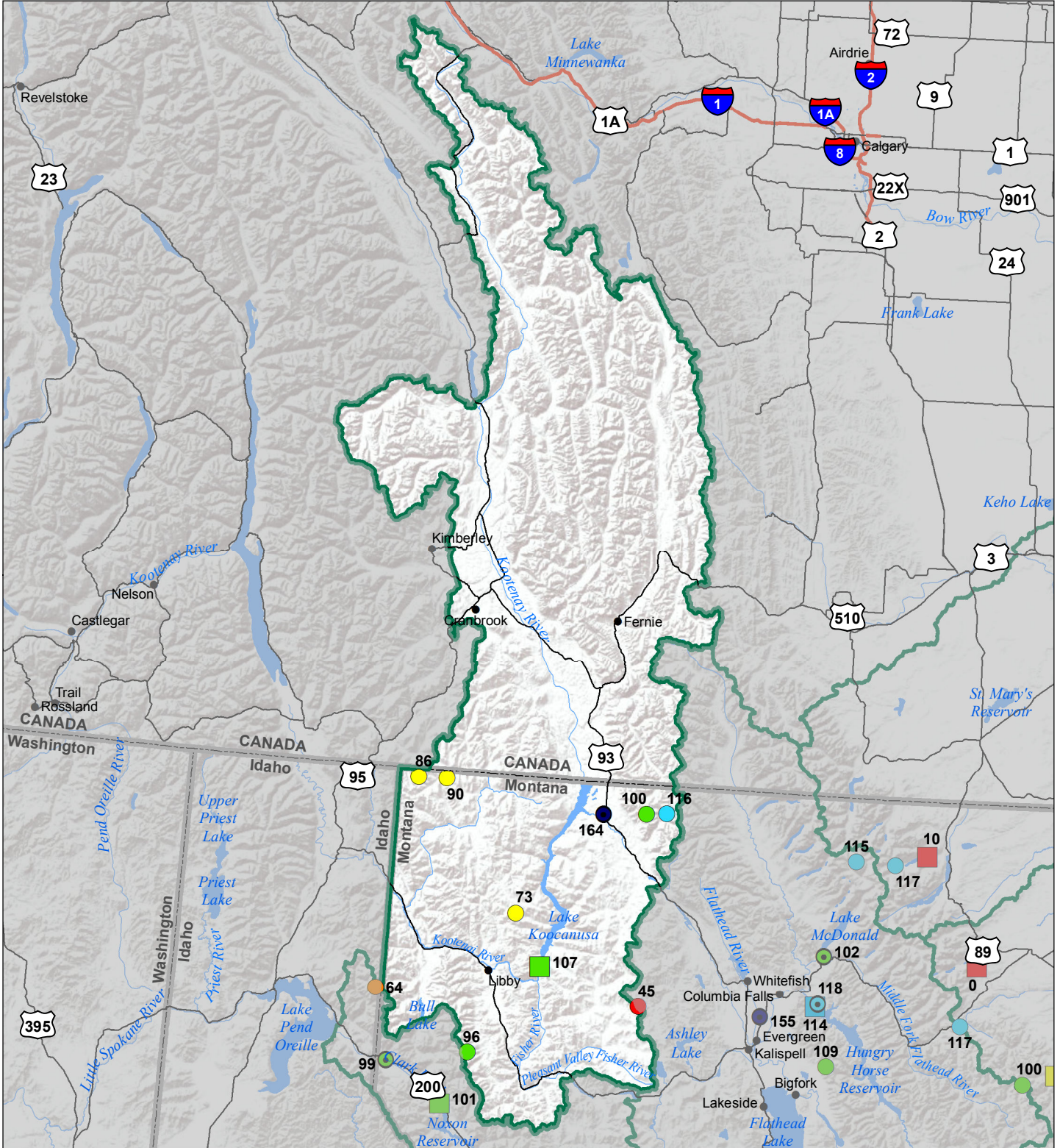


# Kootenai River Basin Monthly Precipitation and Reservoir Levels Percentage of Normal November 1, 2018 (October 1, 2018 - November 1, 2018)



### Precipitation Percent of Normal

#### SNOTEL

- > 150%
- 131 - 150%
- 111 - 130%
- 91 - 110%
- 71 - 90%
- 51 - 70%
- 1 - 50%

#### COOP/ACIS

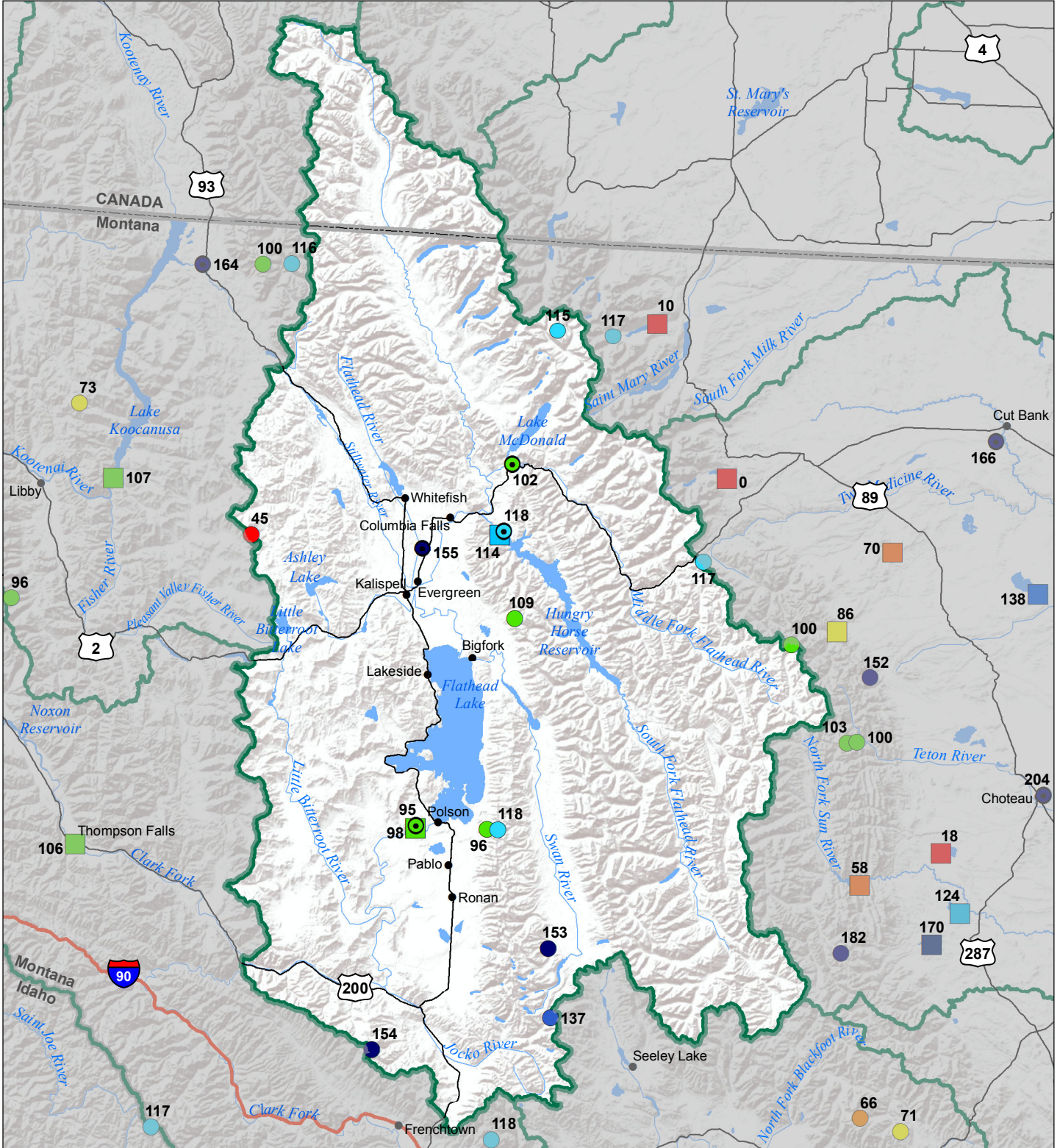
- > 150%
- 131 - 150%
- 111 - 130%
- 91 - 110%
- 71 - 90%
- 51 - 70%
- 1 - 50%

### Reservoirs Percent of Normal

- > 150%
- 131 - 150%
- 111 - 130%
- 91 - 110%
- 71 - 90%
- 51 - 70%
- 1 - 50%



# Flathead River Basin Monthly Precipitation and Reservoir Levels Percentage of Normal November 1, 2018 (October 1, 2018 - November 1, 2018)



### Precipitation Percent of Normal

#### SNOTEL

- > 150%
- 131 - 150%
- 111 - 130%
- 91 - 110%
- 71 - 90%
- 51 - 70%
- 1 - 50%

#### COOP/ACIS

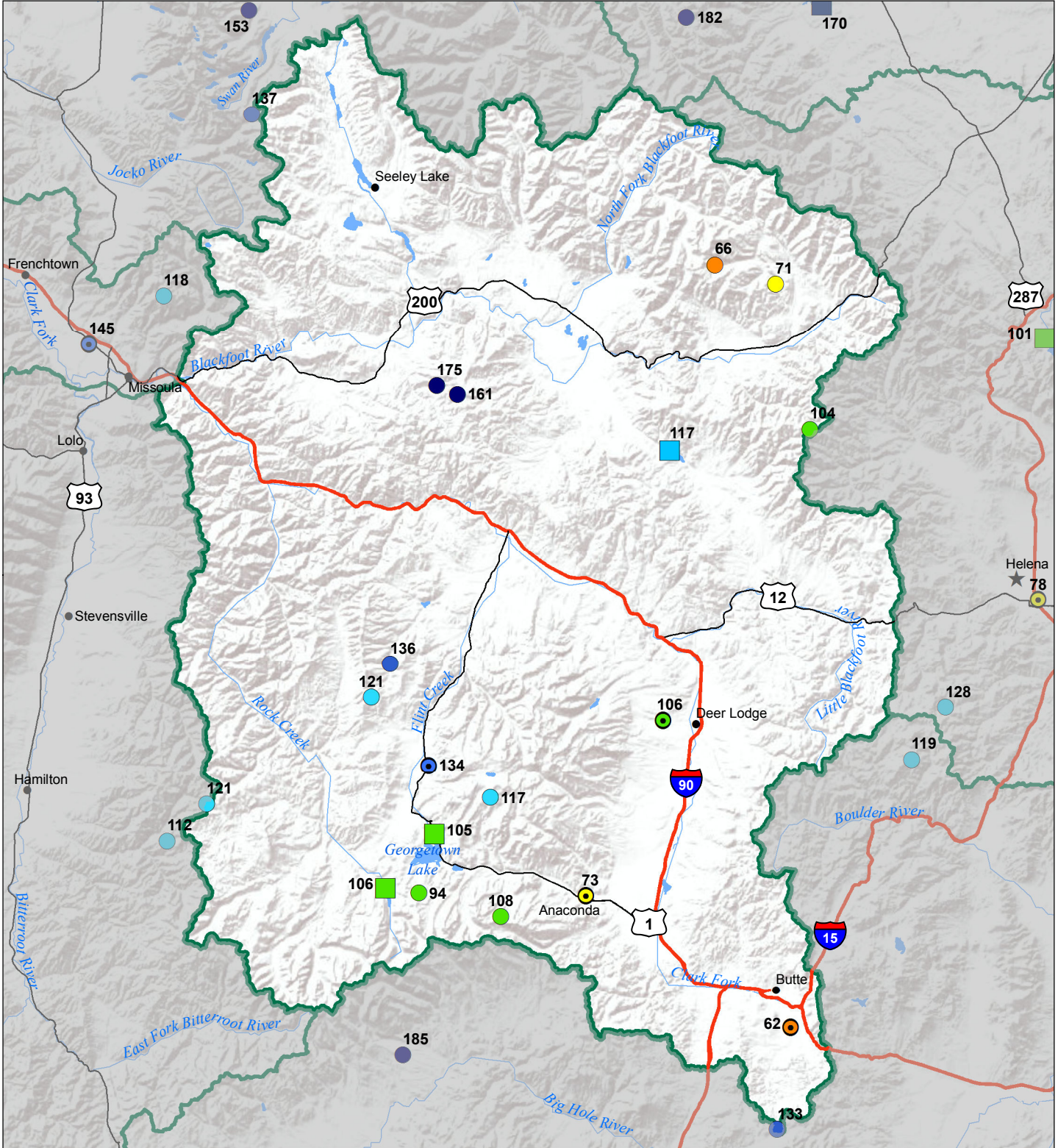
- > 150%
- 131 - 150%
- 111 - 130%
- 91 - 110%
- 71 - 90%
- 51 - 70%
- 1 - 50%

### Reservoirs Percent of Normal

- > 150%
- 131 - 150%
- 111 - 130%
- 91 - 110%
- 71 - 90%
- 51 - 70%
- 1 - 50%



# Upper Clark Fork River Basin Monthly Precipitation and Reservoir Levels Percentage of Normal November 1, 2018 (October 1, 2018 - November 1, 2018)



### Precipitation Percent of Normal

#### SNOTEL

- > 150%
- 131 - 150%
- 111 - 130%
- 118
- 71 - 90%
- 51 - 70%
- 1 - 50%
- 91 - 110%

#### COOP/ACIS

- > 150%
- 131 - 150%
- 111 - 130%
- 121
- 71 - 90%
- 51 - 70%
- 1 - 50%
- 91 - 110%

### Reservoirs Percent of Normal

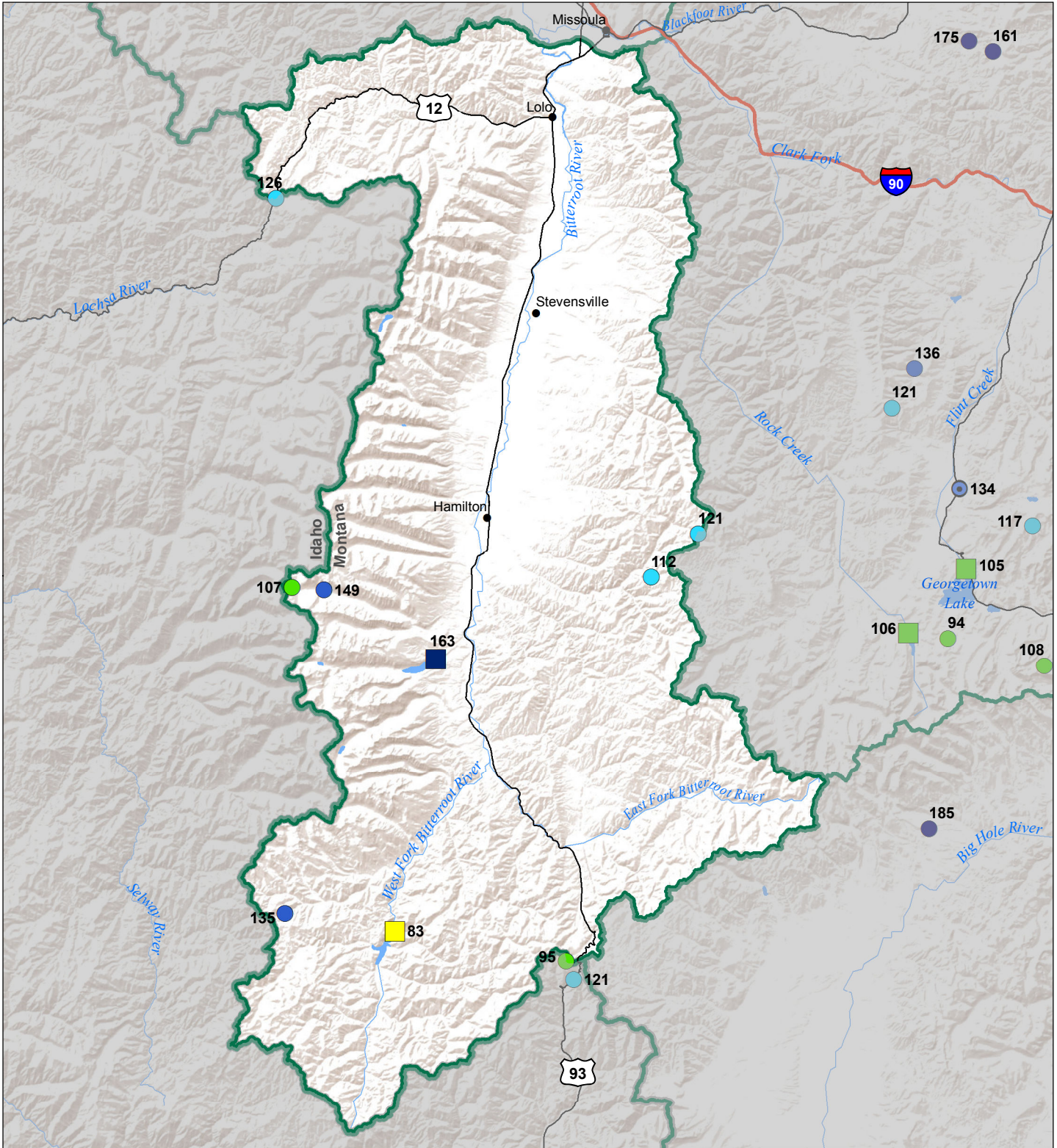
- > 150%
- 131 - 150%
- 111 - 130%
- 117
- 91 - 110%
- 71 - 90%
- 51 - 70%
- 1 - 50%



# Bitterroot River Basin

## Monthly Precipitation and Reservoir Levels Percentage of Normal

### November 1, 2018 (October 1, 2018 - November 1, 2018)



#### Precipitation Percent of Normal

##### SNOTEL

- > 150%
- 131 - 150%
- 111 - 130%
- 91 - 110%
- 71 - 90%
- 51 - 70%
- 1 - 50%

##### COOP/ACIS

- > 150%
- 131 - 150%
- 111 - 130%
- 91 - 110%
- 71 - 90%
- 51 - 70%
- 1 - 50%

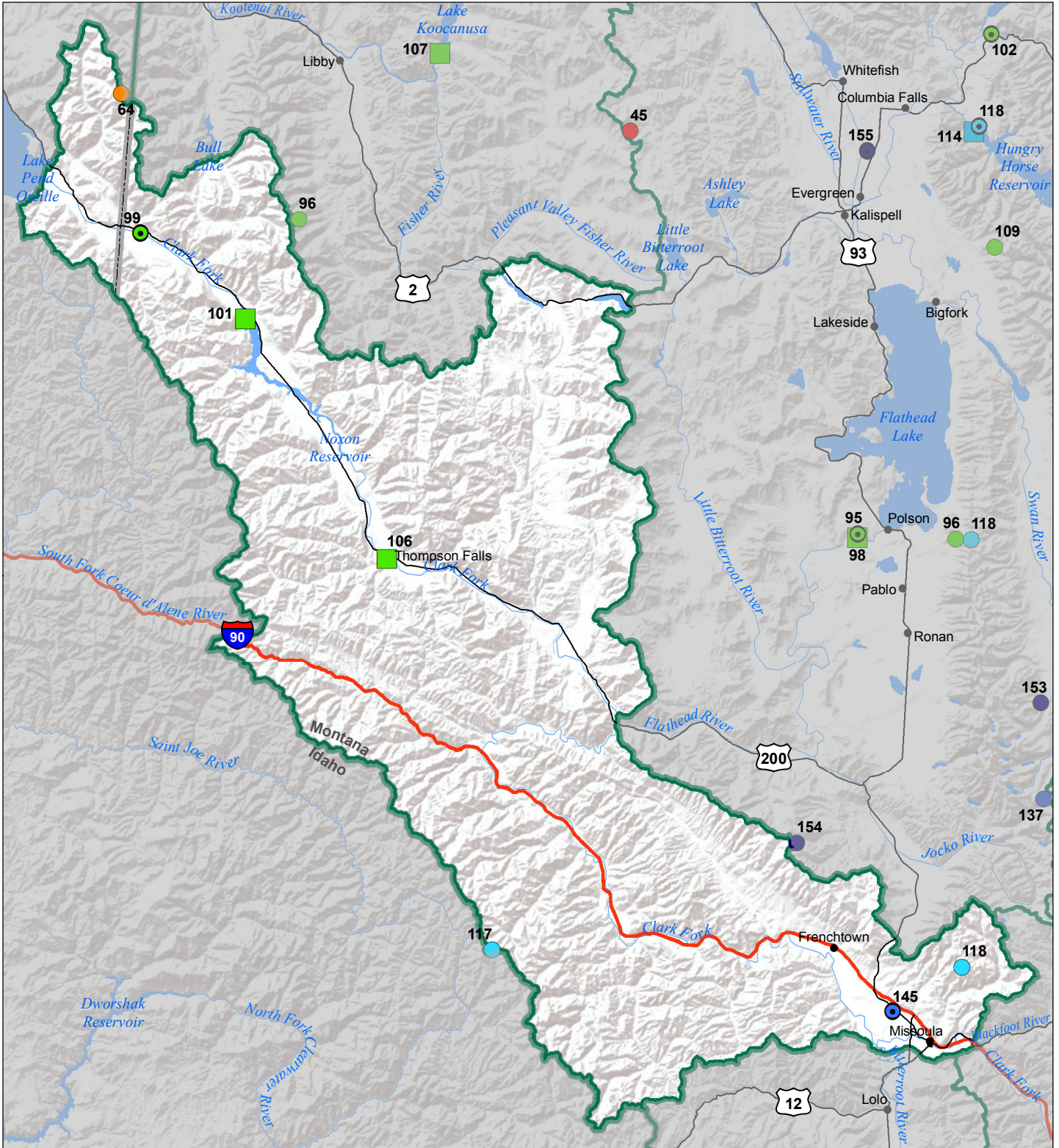
#### Reservoirs Percent of Normal

- > 150%
- 131 - 150%
- 111 - 130%
- 91 - 110%
- 71 - 90%
- 51 - 70%
- 1 - 50%



Montana State Library  
Natural Resource  
Information System

# Lower Clark Fork River Basin Monthly Precipitation and Reservoir Levels Percentage of Normal November 1, 2018 (October 1, 2018 - November 1, 2018)



### Precipitation Percent of Normal

#### SNOTEL

- > 150%
- 131 - 150%
- 111 - 130%
- 91 - 110%
- 71 - 90%
- 51 - 70%
- 1 - 50%

#### COOP/ACIS

- > 150%
- 131 - 150%
- 111 - 130%
- 91 - 110%
- 71 - 90%
- 51 - 70%
- 1 - 50%

### Reservoirs Percent of Normal

- > 150%
- 131 - 150%
- 111 - 130%
- 91 - 110%
- 71 - 90%
- 51 - 70%
- 1 - 50%

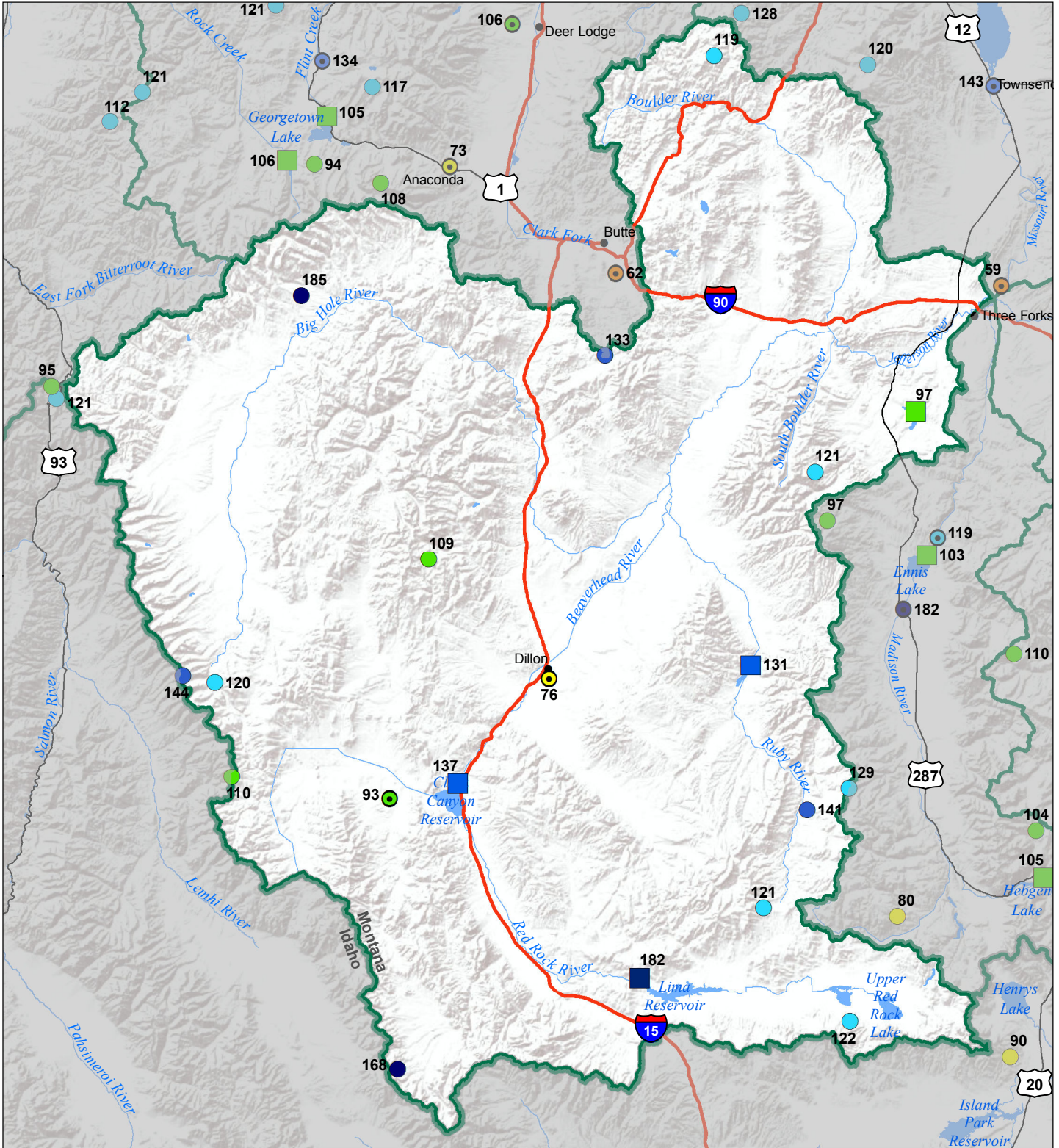


# Jefferson River Basin

## Monthly Precipitation and Reservoir Levels

### Percentage of Normal

November 1, 2018 (October 1, 2018 - November 1, 2018)



#### Precipitation Percent of Normal

##### SNOTEL

- > 150%
- 131 - 150%
- 111 - 130%
- 91 - 110%
- 71 - 90%
- 51 - 70%
- 1 - 50%

##### COOP/ACIS

- > 150%
- 131 - 150%
- 111 - 130%
- 91 - 110%
- 71 - 90%
- 51 - 70%
- 1 - 50%

#### Reservoirs Percent of Normal

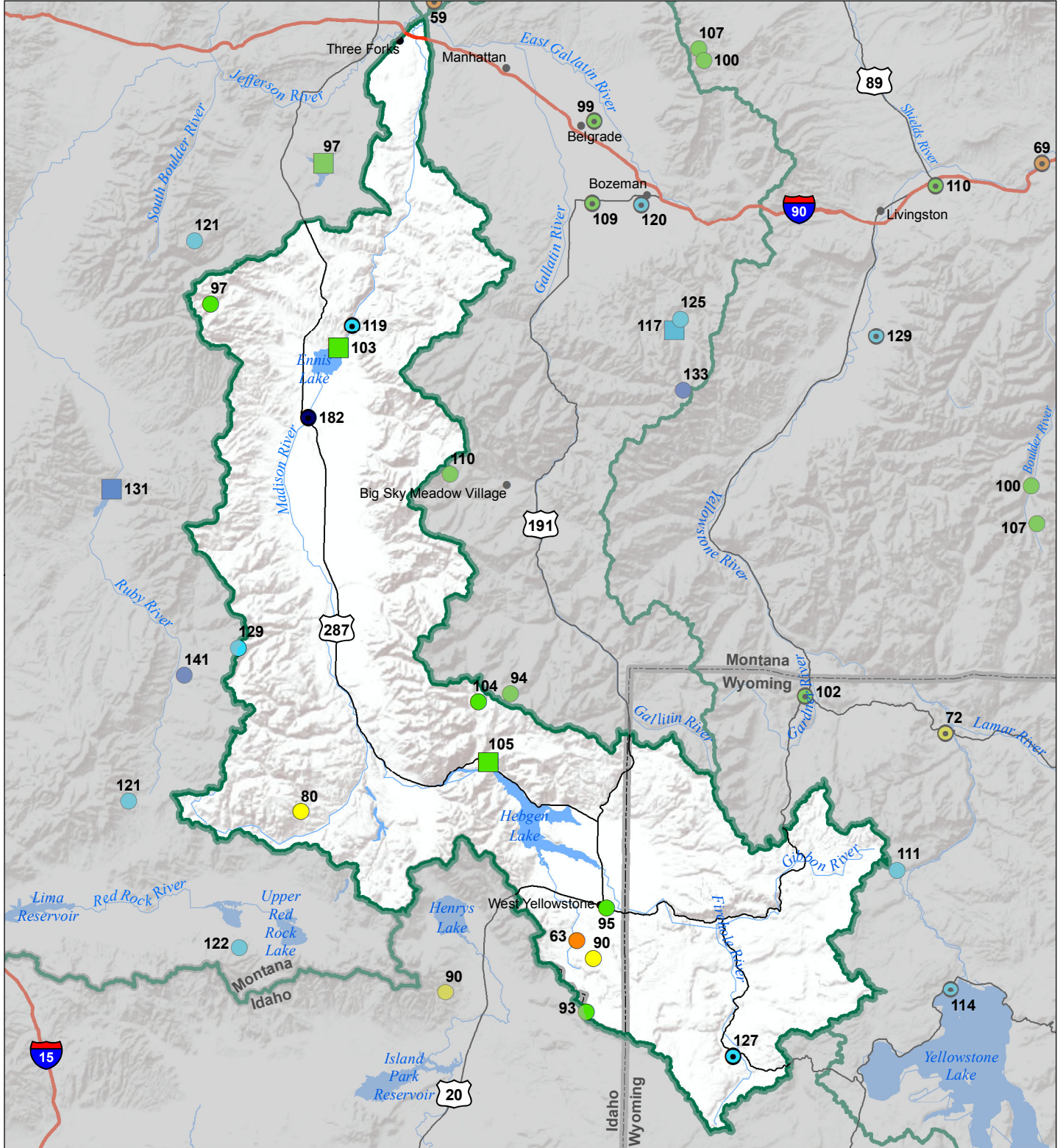
- > 150%
- 131 - 150%
- 111 - 130%
- 91 - 110%
- 71 - 90%
- 51 - 70%
- 1 - 50%



# Madison River Basin

## Monthly Precipitation and Reservoir Levels Percentage of Normal

### November 1, 2018 (October 1, 2018 - November 1, 2018)



#### Precipitation Percent of Normal

##### SNOTEL

- > 150%
- 131 - 150%
- 111 - 130%
- 91 - 110%
- 71 - 90%
- 51 - 70%
- 1 - 50%

##### COOP/ACIS

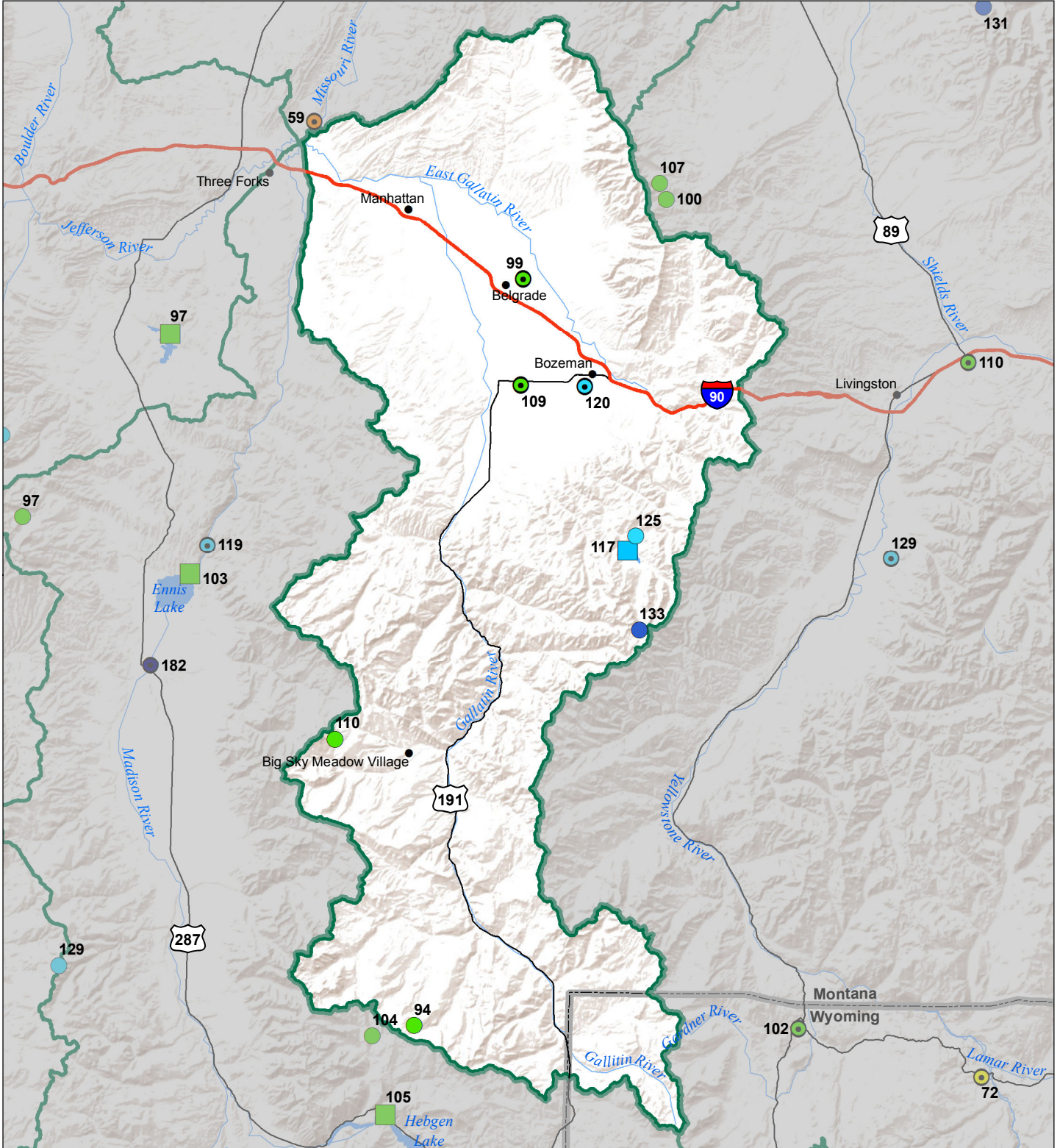
- > 150%
- 131 - 150%
- 111 - 130%
- 91 - 110%
- 71 - 90%
- 51 - 70%
- 1 - 50%

#### Reservoirs Percent of Normal

- > 150%
- 131 - 150%
- 111 - 130%
- 91 - 110%
- 71 - 90%
- 51 - 70%
- 1 - 50%



# Gallatin River Basin Monthly Precipitation and Reservoir Levels Percentage of Normal November 1, 2018 (October 1, 2018 - November 1, 2018)



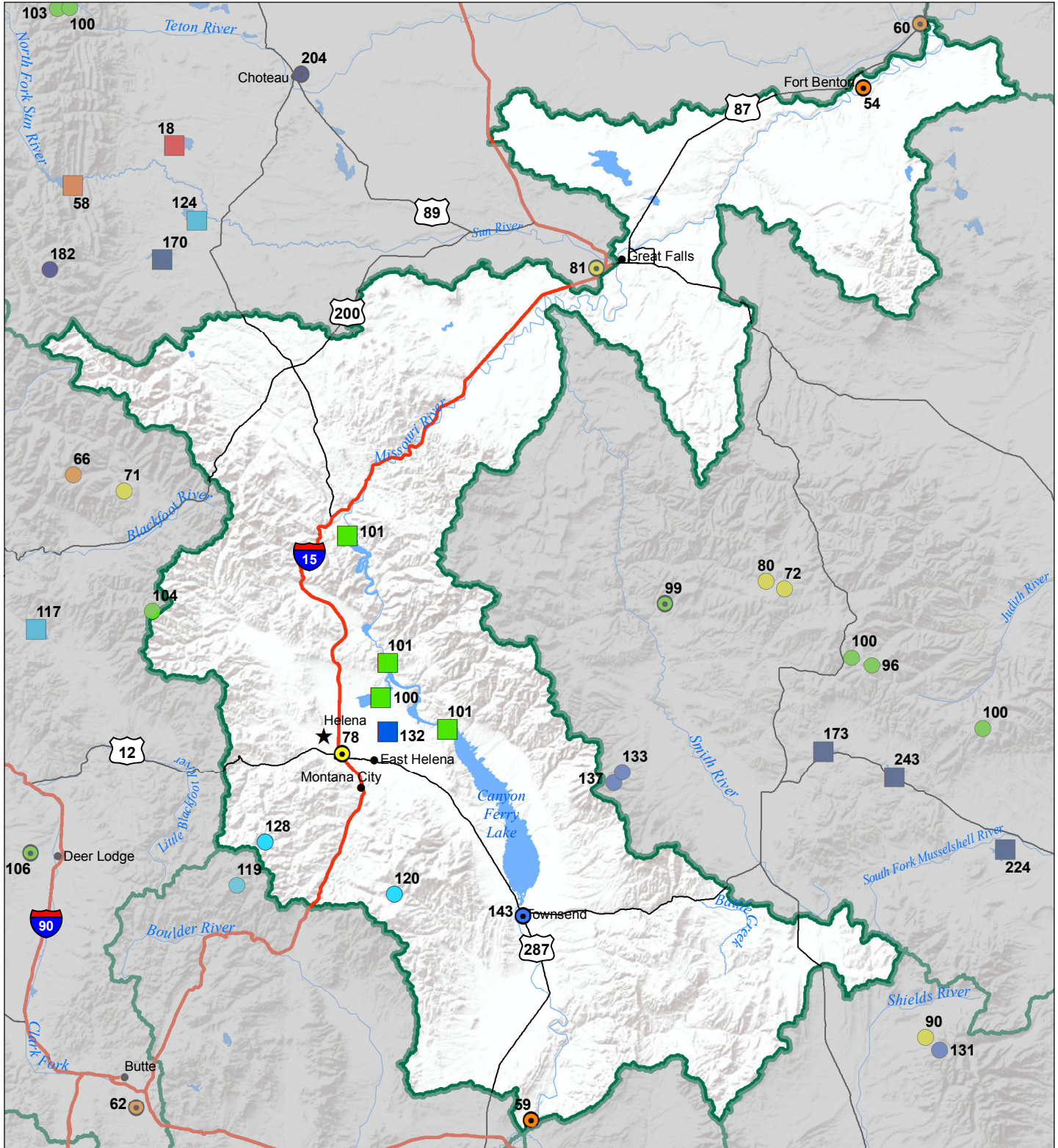
Precipitation Percent of Normal	
<b>SNOTEL</b>	<b>COOP/ACIS</b>
● > 150%	● > 150%
● 131 - 150%	● 131 - 150%
● 111 - 130%	● 111 - 130%
● 91 - 110%	● 91 - 110%
● 71 - 90%	● 71 - 90%
● 51 - 70%	● 51 - 70%
● 1 - 50%	● 1 - 50%

Reservoirs Percent of Normal	
■ > 150%	■ 131 - 150%
■ 111 - 130%	■ 91 - 110%
■ 71 - 90%	■ 51 - 70%
■ 1 - 50%	





# Headwaters Mainstem (Missouri) River Basin Monthly Precipitation and Reservoir Levels Percentage of Normal November 1, 2018 (October 1, 2018 - November 1, 2018)



### Precipitation Percent of Normal

#### SNOTEL

- > 150%
- 131 - 150%
- 111 - 130%
- 91 - 110%
- 71 - 90%
- 51 - 70%
- 1 - 50%

#### COOP/ACIS

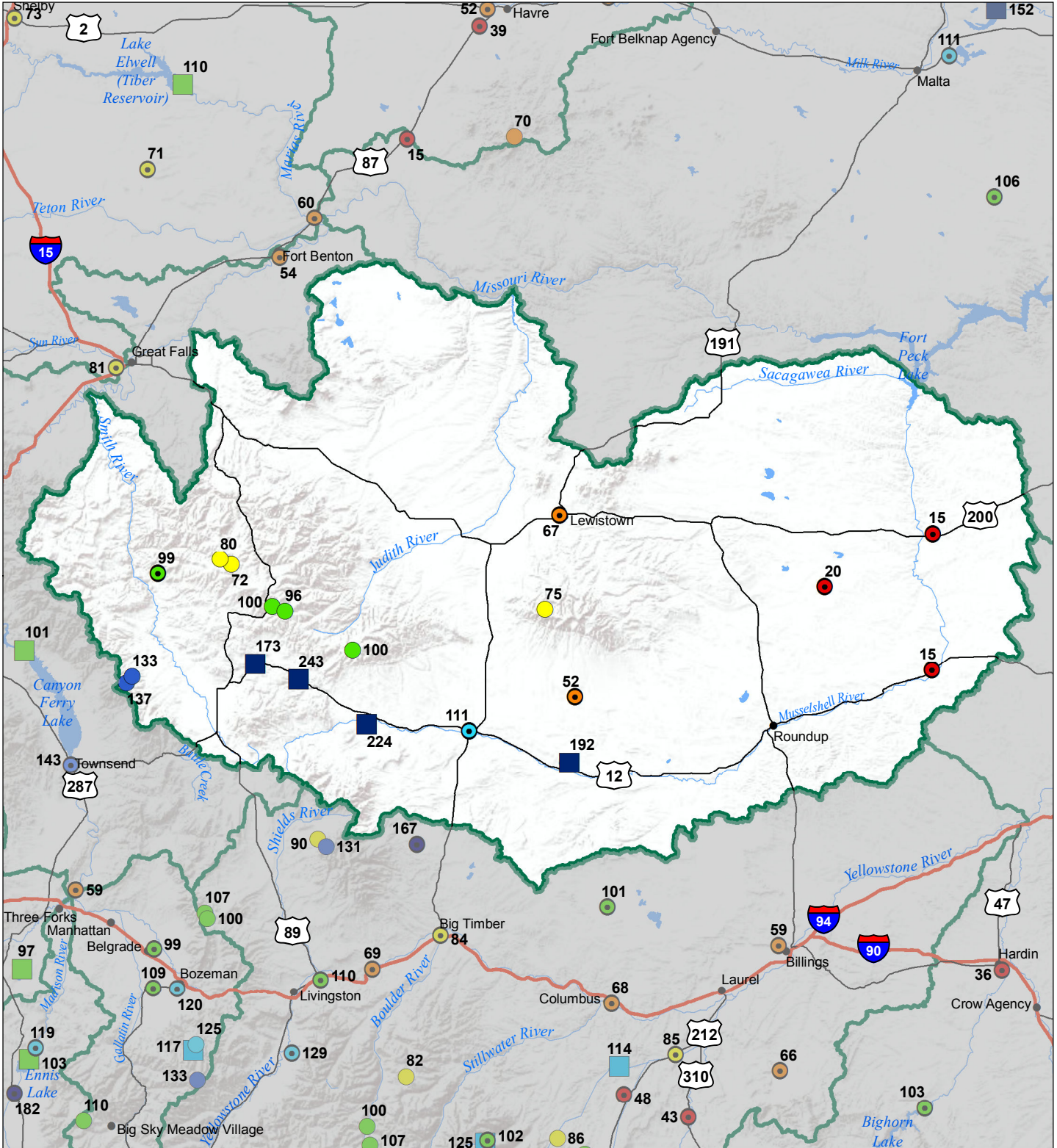
- > 150%
- 131 - 150%
- 111 - 130%
- 91 - 110%
- 71 - 90%
- 51 - 70%
- 1 - 50%

### Reservoirs Percent of Normal

- > 150%
- 131 - 150%
- 111 - 130%
- 91 - 110%
- 71 - 90%
- 51 - 70%
- 1 - 50%



# Smith-Judith-Musselshell River Basin Monthly Precipitation and Reservoir Levels Percentage of Normal November 1, 2018 (October 1, 2018 - November 1, 2018)



### Precipitation Percent of Normal

#### SNOTEL

- > 150%
- 131 - 150%
- 111 - 130%
- 91 - 110%
- 71 - 90%
- 51 - 70%
- 1 - 50%

#### COOP/ACIS

- > 150%
- 131 - 150%
- 111 - 130%
- 91 - 110%
- 71 - 90%
- 51 - 70%
- 1 - 50%

### Reservoirs Percent of Normal

- > 150%
- 131 - 150%
- 111 - 130%
- 91 - 110%
- 71 - 90%
- 51 - 70%
- 1 - 50%

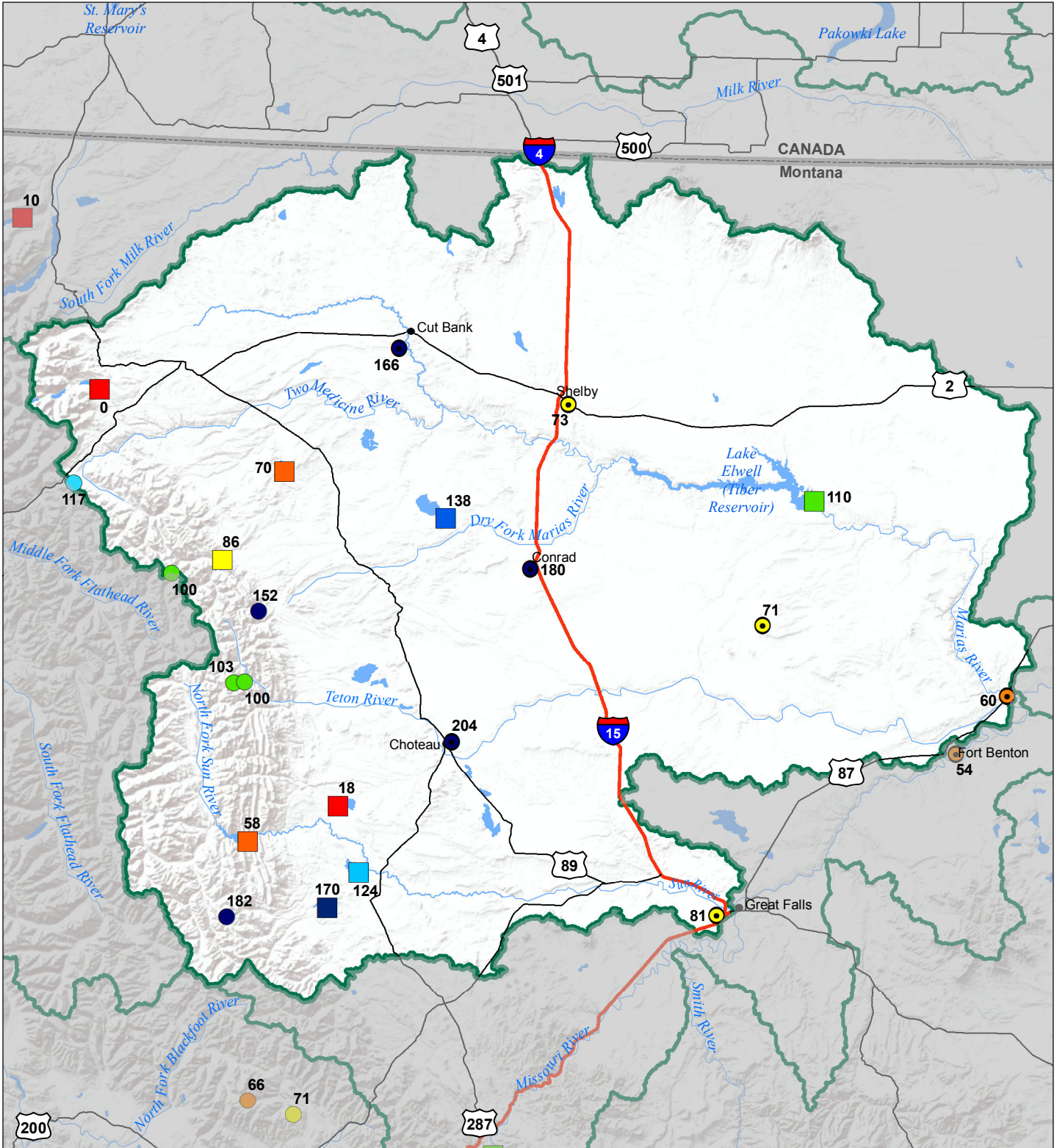


# Sun-Teton-Marias River Basin

## Monthly Precipitation and Reservoir Levels

### Percentage of Normal

November 1, 2018 (October 1, 2018 - November 1, 2018)



### Precipitation Percent of Normal

#### SNOTEL

- > 150%
- 131 - 150%
- 111 - 130%
- 91 - 110%
- 71 - 90%
- 51 - 70%
- 1 - 50%

#### COOP/ACIS

- > 150%
- 131 - 150%
- 111 - 130%
- 91 - 110%
- 71 - 90%
- 51 - 70%
- 1 - 50%

### Reservoirs Percent of Normal

- > 150%
- 131 - 150%
- 111 - 130%
- 91 - 110%
- 71 - 90%
- 51 - 70%
- 1 - 50%



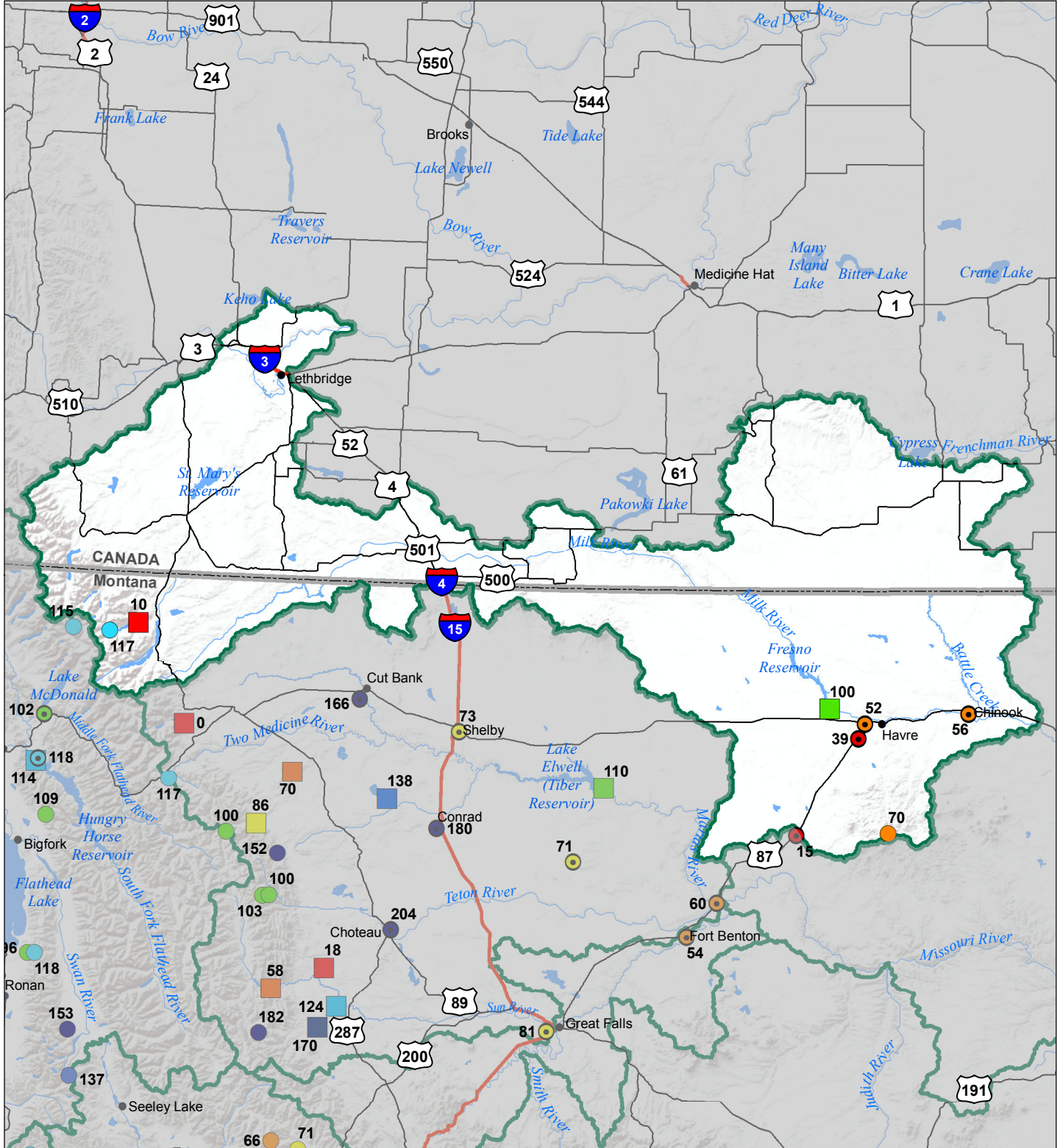
Montana State Library  
Natural Resource  
Information System

# St Mary's-Milk River Basin

## Monthly Precipitation and Reservoir Levels

### Percentage of Normal

November 1, 2018 (October 1, 2018 - November 1, 2018)



### Precipitation Percent of Normal

#### SNOTEL

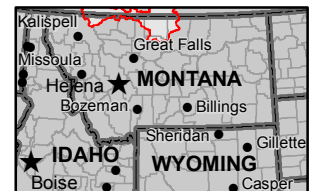
- > 150%
- 131 - 150%
- 111 - 130%
- 91 - 110%
- 71 - 90%
- 51 - 70%
- 1 - 50%

#### COOP/ACIS

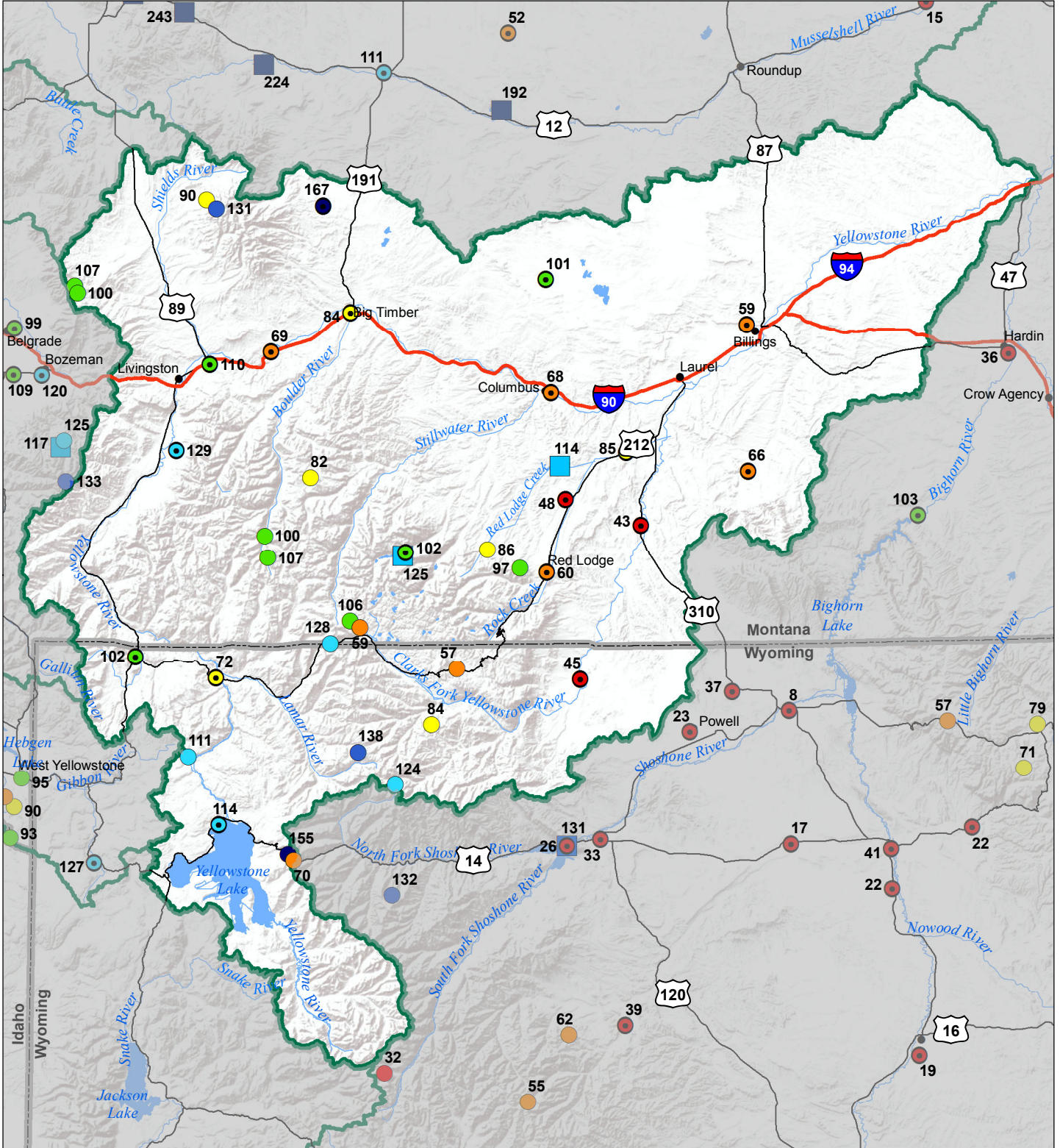
- > 150%
- 131 - 150%
- 111 - 130%
- 91 - 110%
- 71 - 90%
- 51 - 70%
- 1 - 50%

### Reservoirs Percent of Normal

- > 150%
- 131 - 150%
- 111 - 130%
- 91 - 110%
- 71 - 90%
- 51 - 70%
- 1 - 50%



# Upper Yellowstone River Basin Monthly Precipitation and Reservoir Levels Percentage of Normal November 1, 2018 (October 1, 2018 - November 1, 2018)



### Precipitation Percent of Normal

#### SNOTEL

- > 150%
- 131 - 150%
- 111 - 130%
- 91 - 110%
- 71 - 90%
- 51 - 70%
- 1 - 50%

#### COOP/ACIS

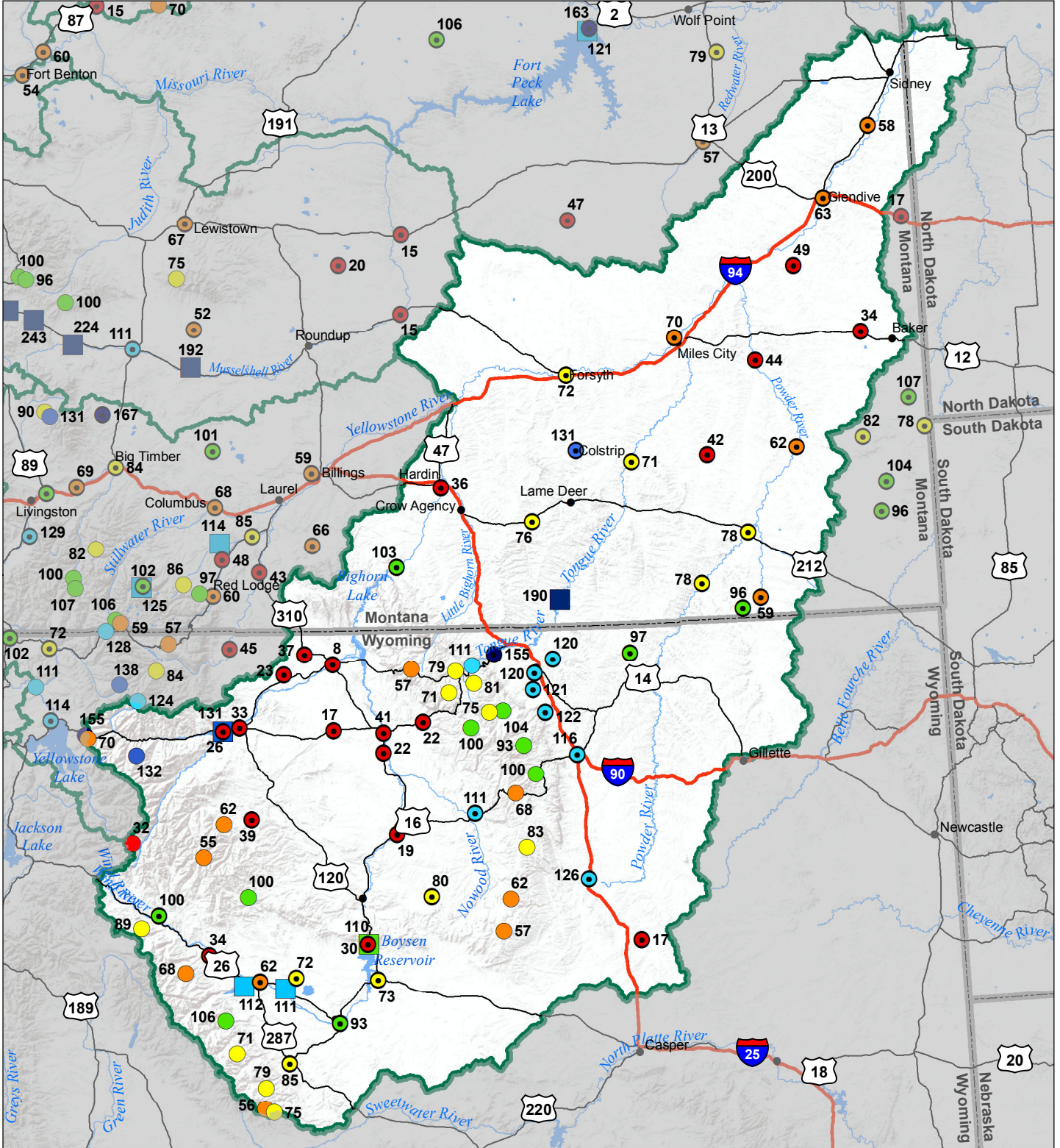
- > 150%
- 131 - 150%
- 111 - 130%
- 91 - 110%
- 71 - 90%
- 51 - 70%
- 1 - 50%

### Reservoirs Percent of Normal

- > 150%
- 131 - 150%
- 111 - 130%
- 91 - 110%
- 71 - 90%
- 51 - 70%
- 1 - 50%



# Lower Yellowstone River Basin Monthly Precipitation and Reservoir Levels Percentage of Normal November 1, 2018 (October 1, 2018 - November 1, 2018)



### Precipitation Percent of Normal

#### SNOTEL

- > 150%
- 131 - 150%
- 111 - 130%
- 91 - 110%
- 71 - 90%
- 51 - 70%
- 1 - 50%

#### COOP/ACIS

- > 150%
- 131 - 150%
- 111 - 130%
- 91 - 110%
- 71 - 90%
- 51 - 70%
- 1 - 50%

### Reservoirs Percent of Normal

- > 150%
- 131 - 150%
- 111 - 130%
- 91 - 110%
- 71 - 90%
- 51 - 70%
- 1 - 50%

