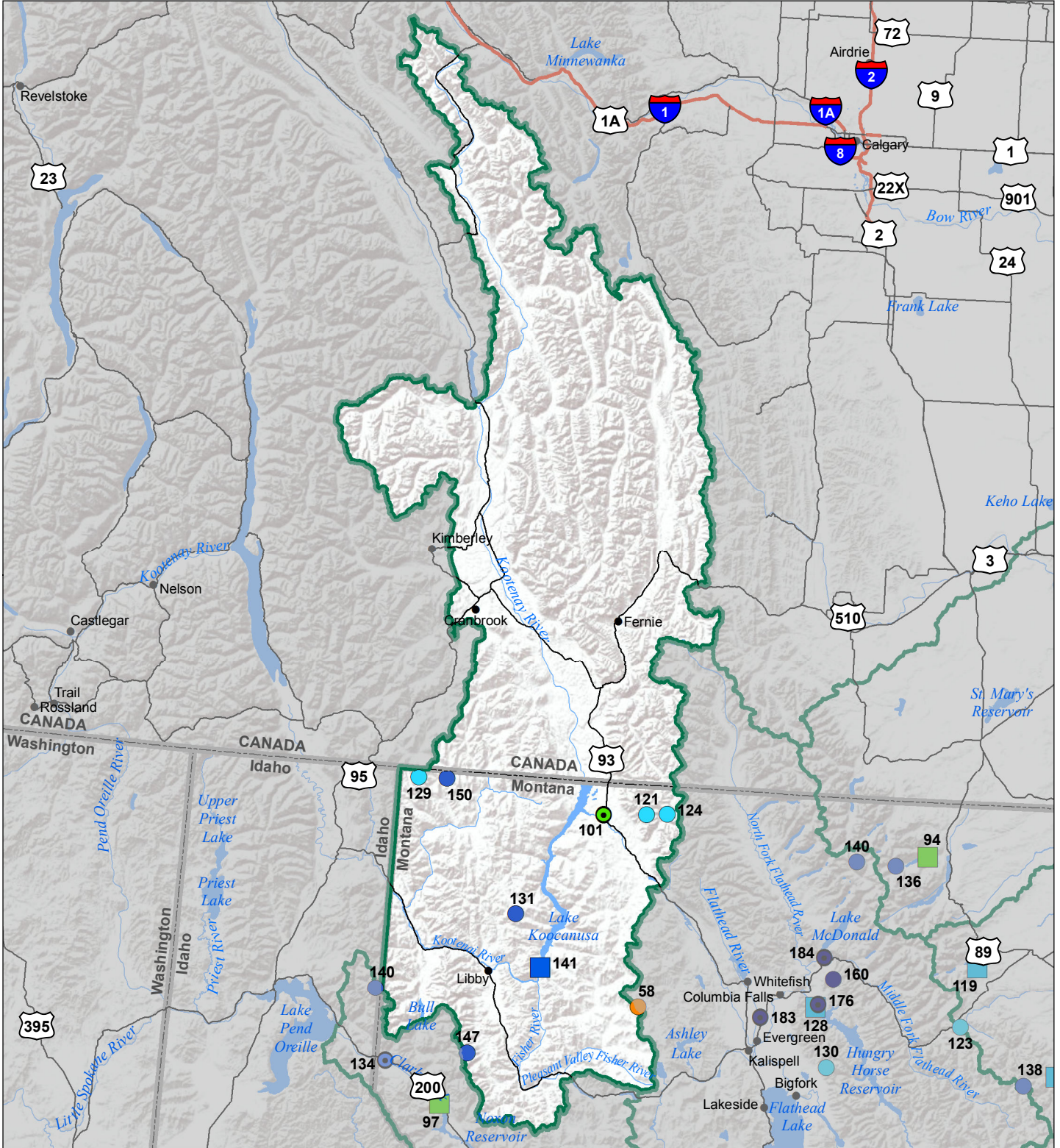


# Kootenai River Basin Monthly Precipitation and Reservoir Levels Percentage of Normal May 1, 2019 (April 1, 2019 - May 1, 2019)



### Precipitation Percent of Normal

#### SNOTEL

- > 150%
- 131 - 150%
- 111 - 130%
- 91 - 110%
- 71 - 90%
- 51 - 70%
- 1 - 50%

#### COOP/ACIS

- > 150%
- 131 - 150%
- 111 - 130%
- 91 - 110%
- 71 - 90%
- 51 - 70%
- 1 - 50%

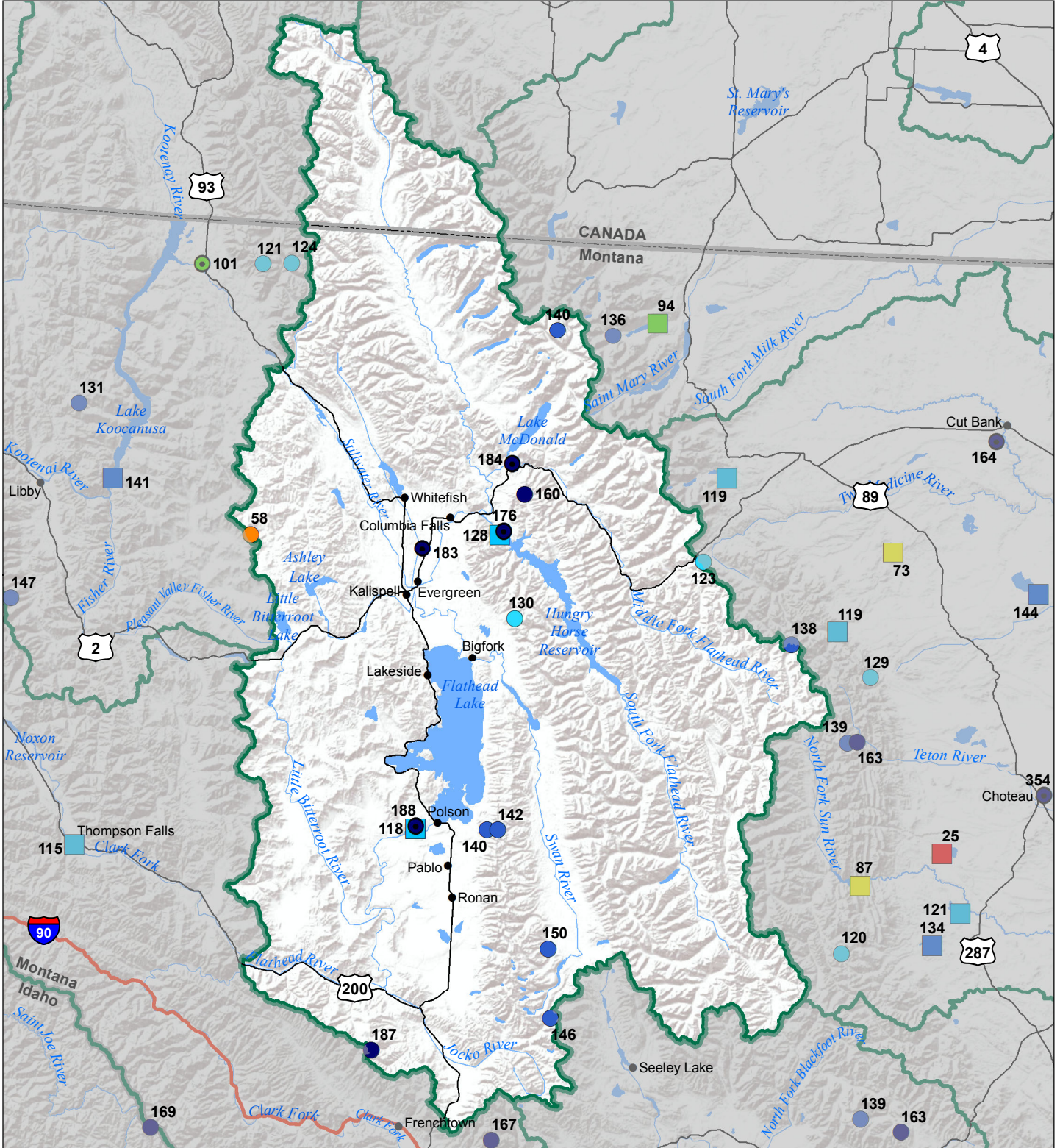
### Reservoirs Percent of Normal

- > 150%
- 131 - 150%
- 111 - 130%
- 91 - 110%
- 71 - 90%
- 51 - 70%
- 1 - 50%





# Flathead River Basin Monthly Precipitation and Reservoir Levels Percentage of Normal May 1, 2019 (April 1, 2019 - May 1, 2019)



### Precipitation Percent of Normal

#### SNOTEL

- > 150%
- 131 - 150%
- 111 - 130%
- 91 - 110%
- 71 - 90%
- 51 - 70%
- 1 - 50%

#### COOP/ACIS

- > 150%
- 131 - 150%
- 111 - 130%
- 91 - 110%
- 71 - 90%
- 51 - 70%
- 1 - 50%

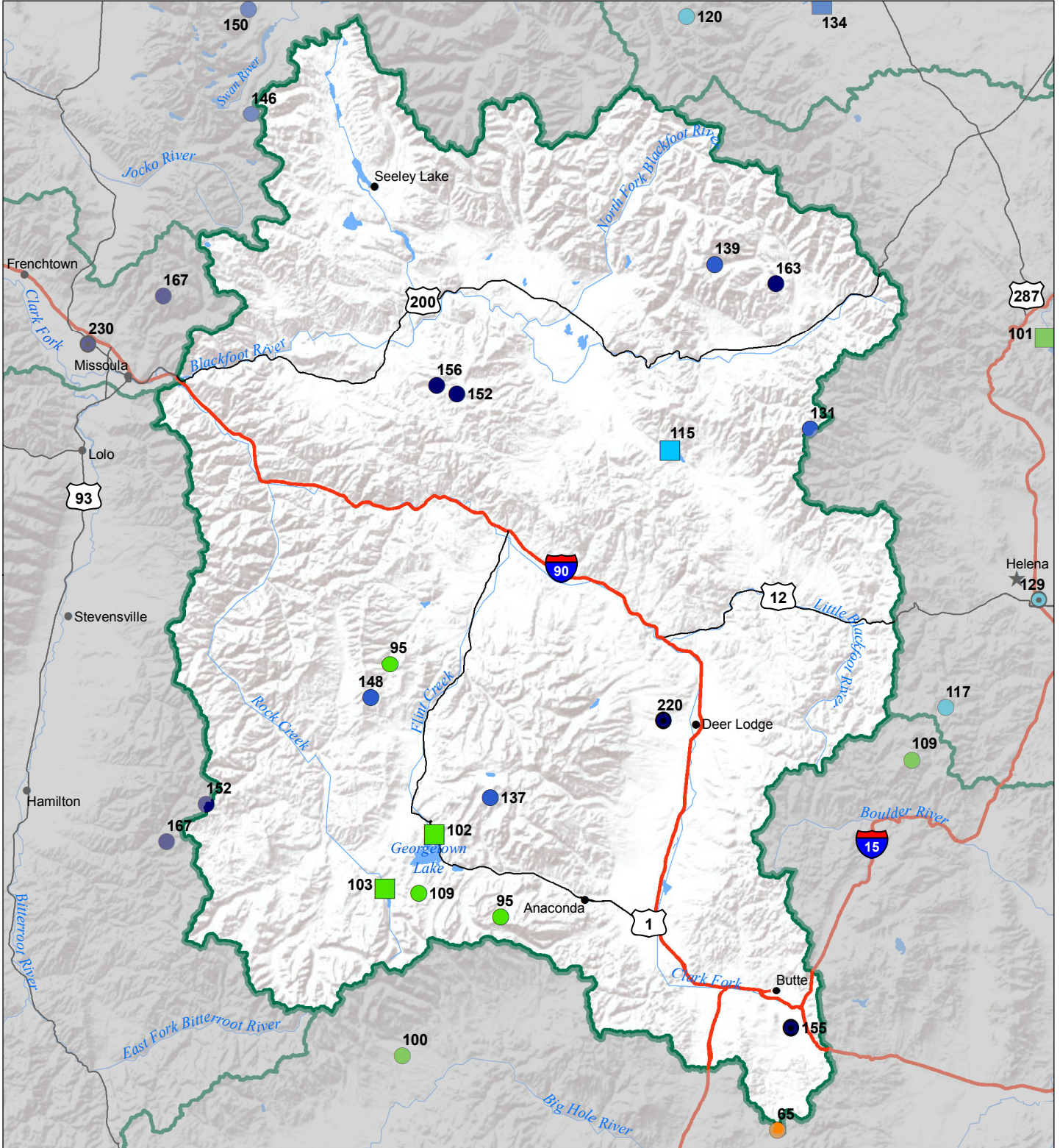
### Reservoirs Percent of Normal

- > 150%
- 131 - 150%
- 111 - 130%
- 91 - 110%
- 71 - 90%
- 51 - 70%
- 1 - 50%





# Upper Clark Fork River Basin Monthly Precipitation and Reservoir Levels Percentage of Normal May 1, 2019 (April 1, 2019 - May 1, 2019)



### Precipitation Percent of Normal

#### SNOTEL

- > 150%
- 71 - 90%
- 51 - 70%
- 1 - 50%
- 111 - 130%
- 91 - 110%

#### COOP/ACIS

- > 150%
- 71 - 90%
- 51 - 70%
- 1 - 50%
- 111 - 130%
- 91 - 110%

### Reservoirs Percent of Normal

- > 150%
- 131 - 150%
- 111 - 130%
- 91 - 110%
- 71 - 90%
- 51 - 70%
- 1 - 50%



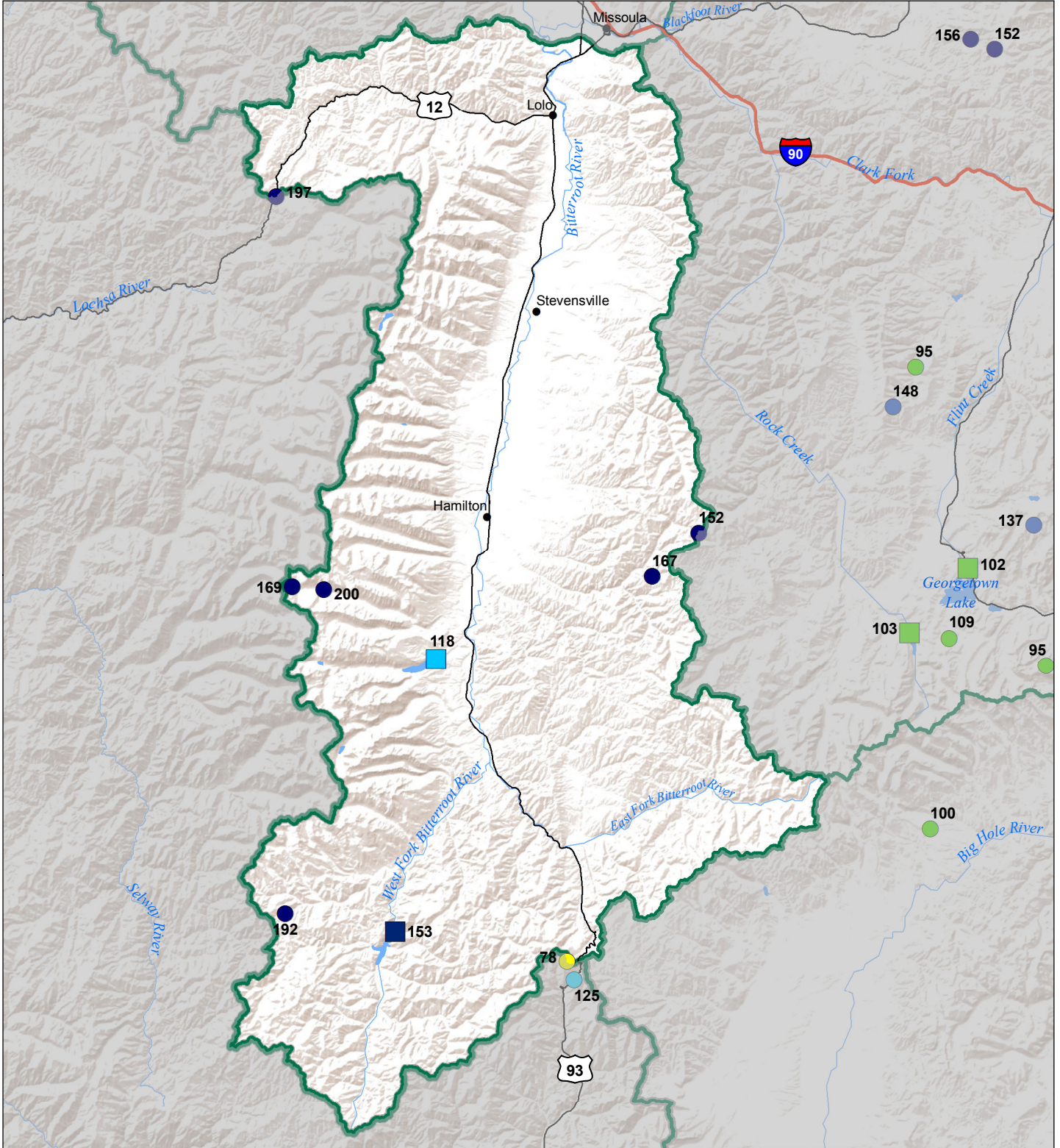


# Bitterroot River Basin

## Monthly Precipitation and Reservoir Levels

### Percentage of Normal

May 1, 2019 (April 1, 2019 - May 1, 2019)



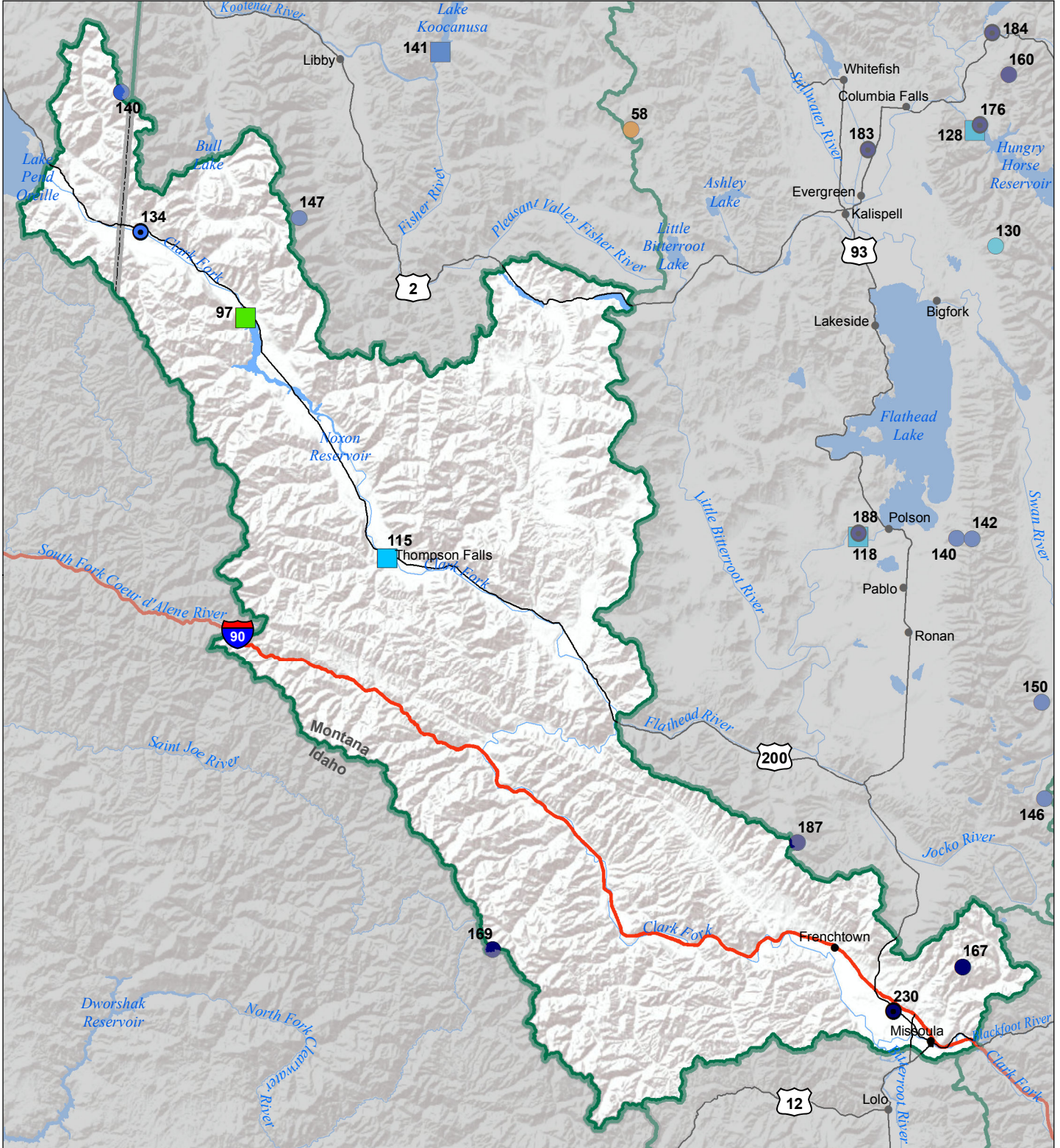
Precipitation Percent of Normal	
SNOTEL	COOP/ACIS
● > 150%	● > 150%
● 131 - 150%	● 131 - 150%
● 111 - 130%	● 111 - 130%
● 91 - 110%	● 91 - 110%
● 71 - 90%	● 71 - 90%
● 51 - 70%	● 51 - 70%
● 1 - 50%	● 1 - 50%

Reservoirs Percent of Normal	
■ > 150%	■ 131 - 150%
■ 111 - 130%	■ 91 - 110%
■ 71 - 90%	■ 51 - 70%
■ 1 - 50%	





# Lower Clark Fork River Basin Monthly Precipitation and Reservoir Levels Percentage of Normal May 1, 2019 (April 1, 2019 - May 1, 2019)



### Precipitation Percent of Normal

#### SNOTEL

- > 150%
- 131 - 150%
- 111 - 130%
- 91 - 110%
- 71 - 90%
- 51 - 70%
- 1 - 50%

#### COOP/ACIS

- > 150%
- 131 - 150%
- 111 - 130%
- 91 - 110%
- 71 - 90%
- 51 - 70%
- 1 - 50%

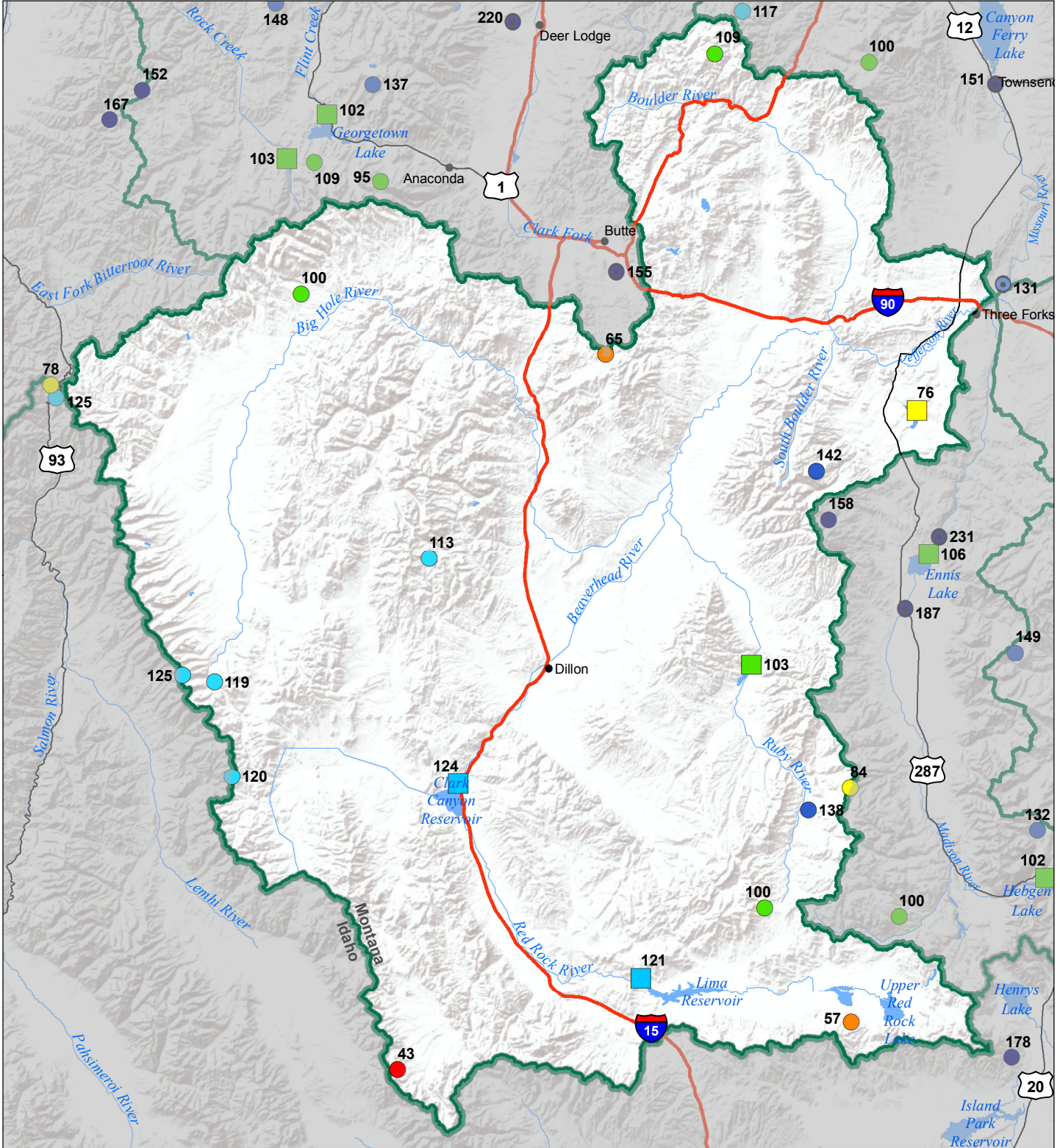
### Reservoirs Percent of Normal

- > 150%
- 131 - 150%
- 111 - 130%
- 91 - 110%
- 71 - 90%
- 51 - 70%
- 1 - 50%





# Jefferson River Basin Monthly Precipitation and Reservoir Levels Percentage of Normal May 1, 2019 (April 1, 2019 - May 1, 2019)



### Precipitation Percent of Normal

#### SNOTEL

- > 150%
- 131 - 150%
- 111 - 130%
- 91 - 110%
- 71 - 90%
- 51 - 70%
- 1 - 50%

#### COOP/ACIS

- > 150%
- 131 - 150%
- 111 - 130%
- 91 - 110%
- 71 - 90%
- 51 - 70%
- 1 - 50%

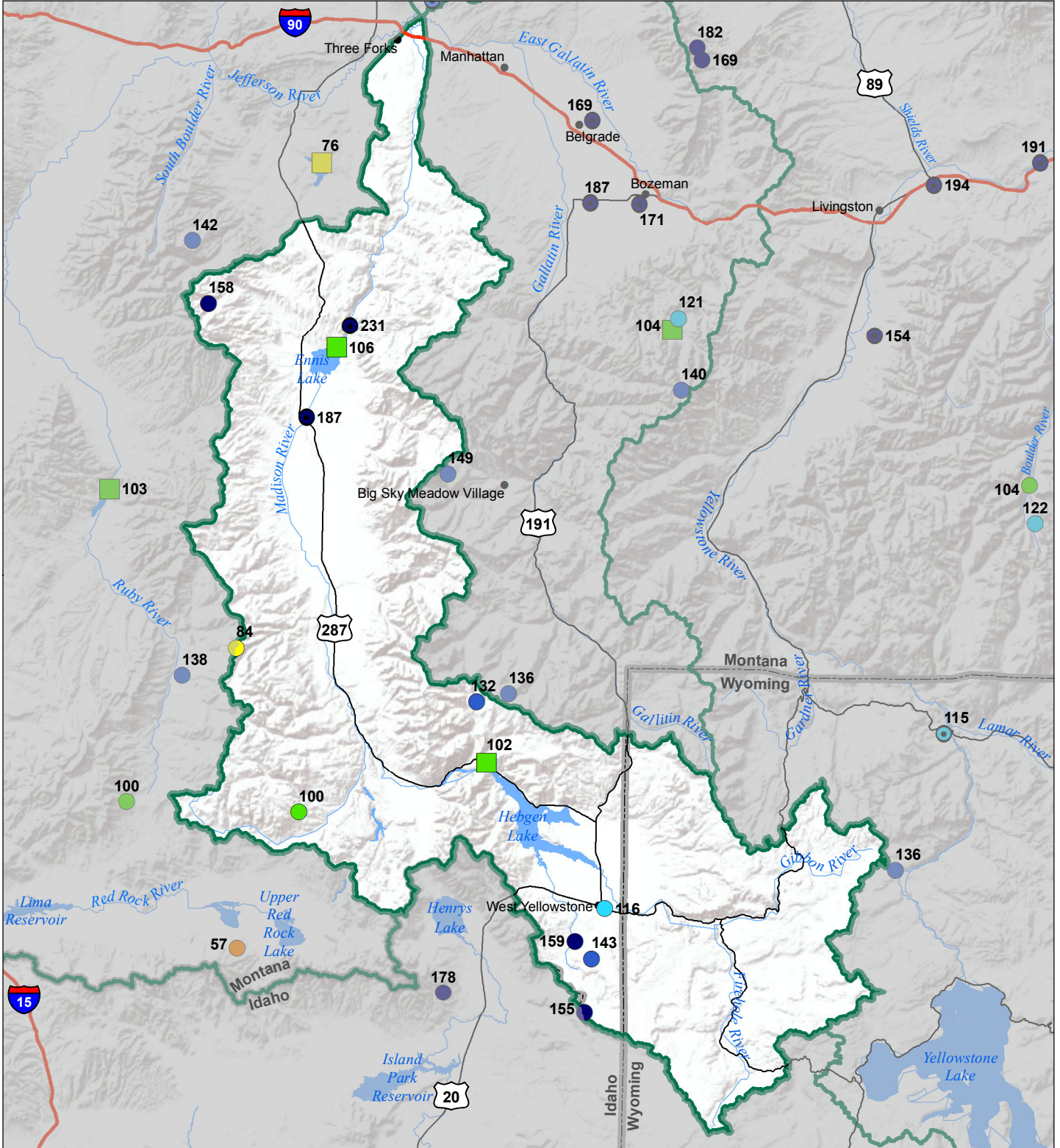
### Reservoirs Percent of Normal

- > 150%
- 131 - 150%
- 111 - 130%
- 91 - 110%
- 71 - 90%
- 51 - 70%
- 1 - 50%





# Madison River Basin Monthly Precipitation and Reservoir Levels Percentage of Normal May 1, 2019 (April 1, 2019 - May 1, 2019)



### Precipitation Percent of Normal

#### SNOTEL

- > 150%
- 131 - 150%
- 111 - 130%
- 91 - 110%
- 71 - 90%
- 51 - 70%
- 1 - 50%

#### COOP/ACIS

- > 150%
- 131 - 150%
- 111 - 130%
- 91 - 110%
- 71 - 90%
- 51 - 70%
- 1 - 50%

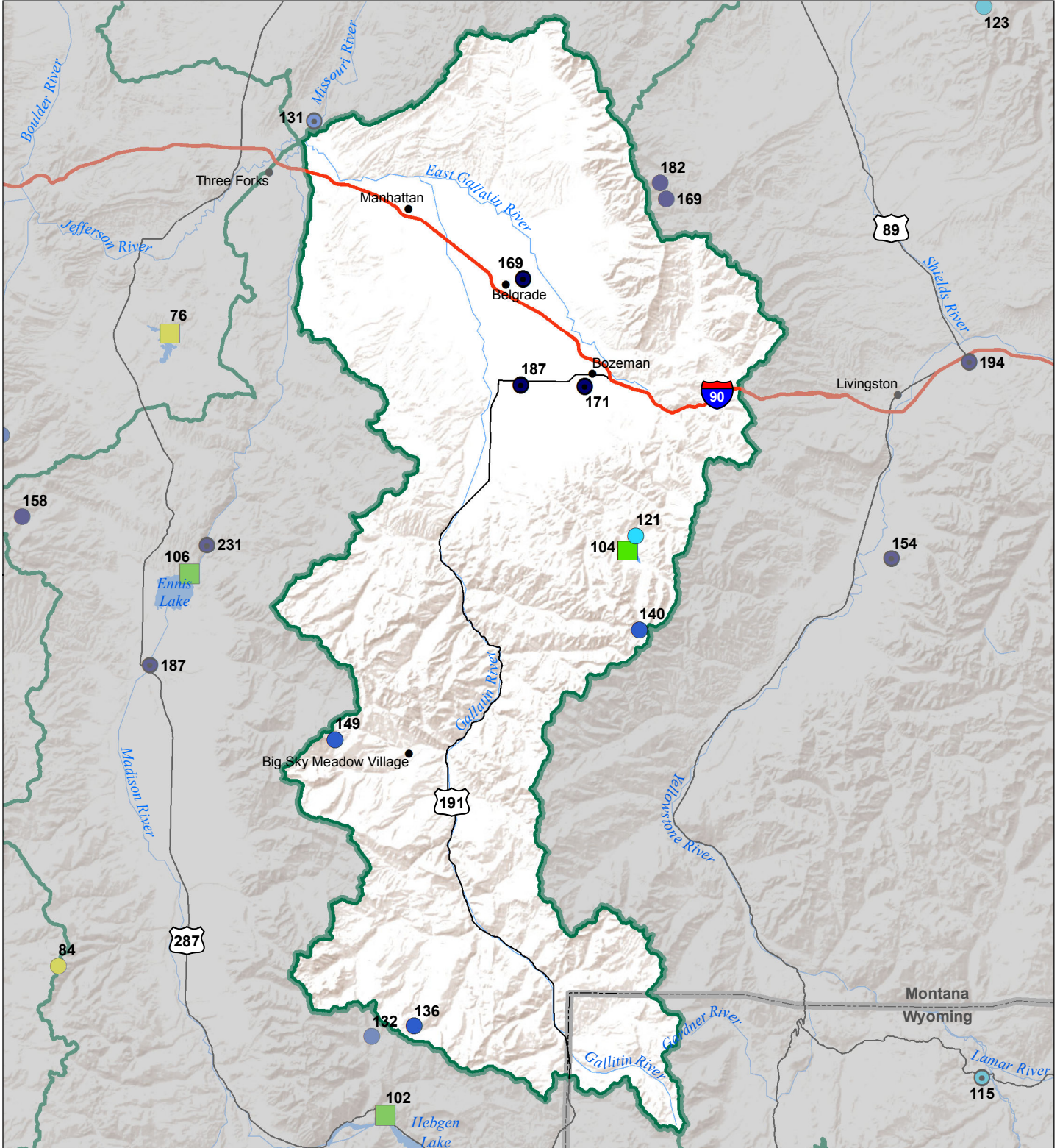
### Reservoirs Percent of Normal

- > 150%
- 131 - 150%
- 111 - 130%
- 91 - 110%
- 71 - 90%
- 51 - 70%
- 1 - 50%





# Gallatin River Basin Monthly Precipitation and Reservoir Levels Percentage of Normal May 1, 2019 (April 1, 2019 - May 1, 2019)



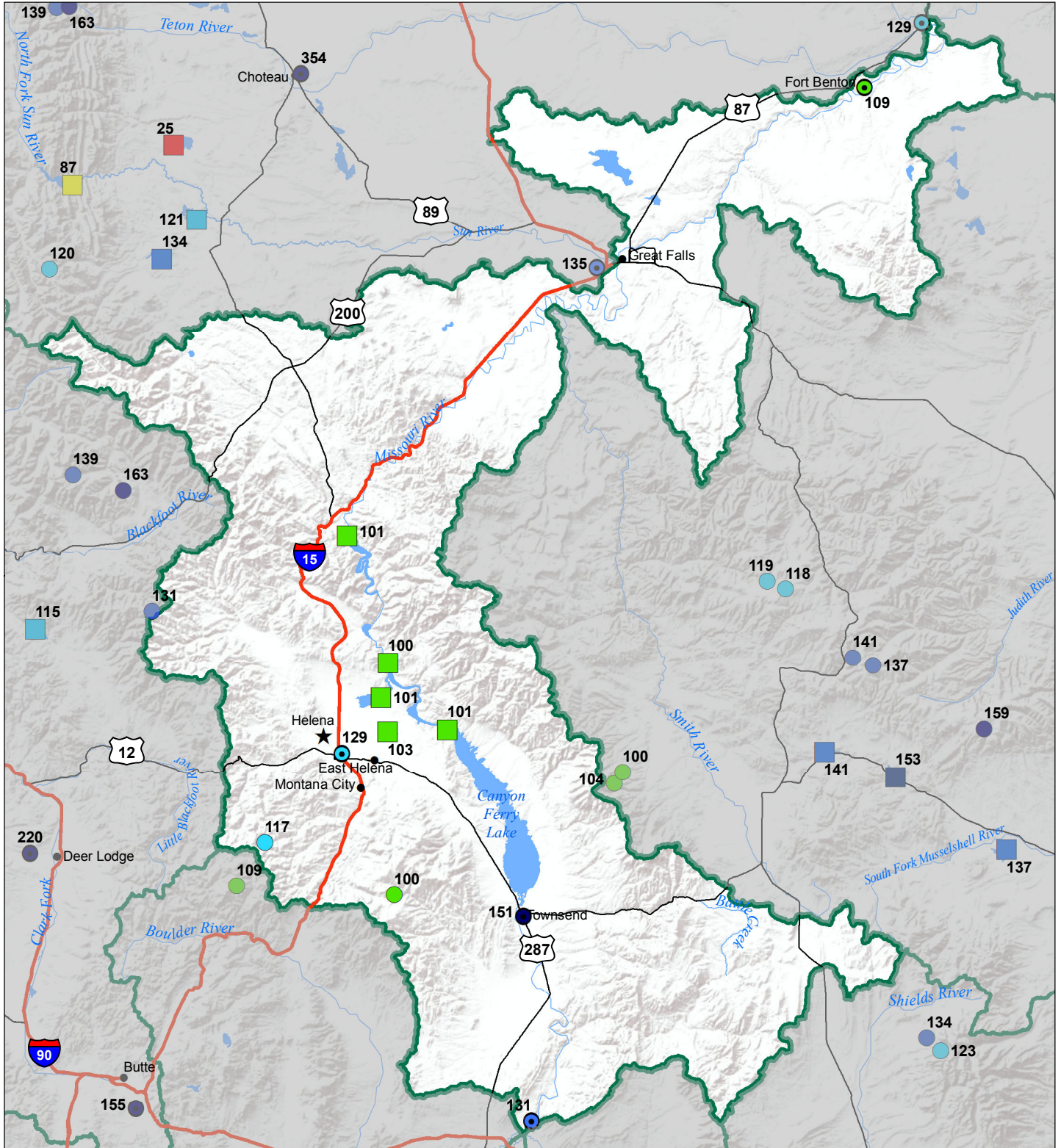
Precipitation Percent of Normal			
SNOTEL		COOP/ACIS	
<span style="color: blue;">●</span> > 150%	<span style="color: yellow;">●</span> 71 - 90%	<span style="color: blue;">●</span> > 150%	<span style="color: yellow;">●</span> 71 - 90%
<span style="color: blue;">●</span> 131 - 150%	<span style="color: orange;">●</span> 51 - 70%	<span style="color: blue;">●</span> 131 - 150%	<span style="color: orange;">●</span> 51 - 70%
<span style="color: cyan;">●</span> 111 - 130%	<span style="color: red;">●</span> 1 - 50%	<span style="color: cyan;">●</span> 111 - 130%	<span style="color: red;">●</span> 1 - 50%
<span style="color: green;">●</span> 91 - 110%		<span style="color: green;">●</span> 91 - 110%	

Reservoirs Percent of Normal	
<span style="color: darkblue;">■</span>	> 150%
<span style="color: blue;">■</span>	131 - 150%
<span style="color: cyan;">■</span>	111 - 130%
<span style="color: green;">■</span>	91 - 110%
<span style="color: yellow;">■</span>	71 - 90%
<span style="color: orange;">■</span>	51 - 70%
<span style="color: red;">■</span>	1 - 50%





# Headwaters Mainstem (Missouri) River Basin Monthly Precipitation and Reservoir Levels Percentage of Normal May 1, 2019 (April 1, 2019 - May 1, 2019)



### Precipitation Percent of Normal

#### SNOTEL

- > 150%
- 131 - 150%
- 111 - 130%
- 91 - 110%
- 71 - 90%
- 51 - 70%
- 1 - 50%

#### COOP/ACIS

- > 150%
- 131 - 150%
- 111 - 130%
- 91 - 110%
- 71 - 90%
- 51 - 70%
- 1 - 50%

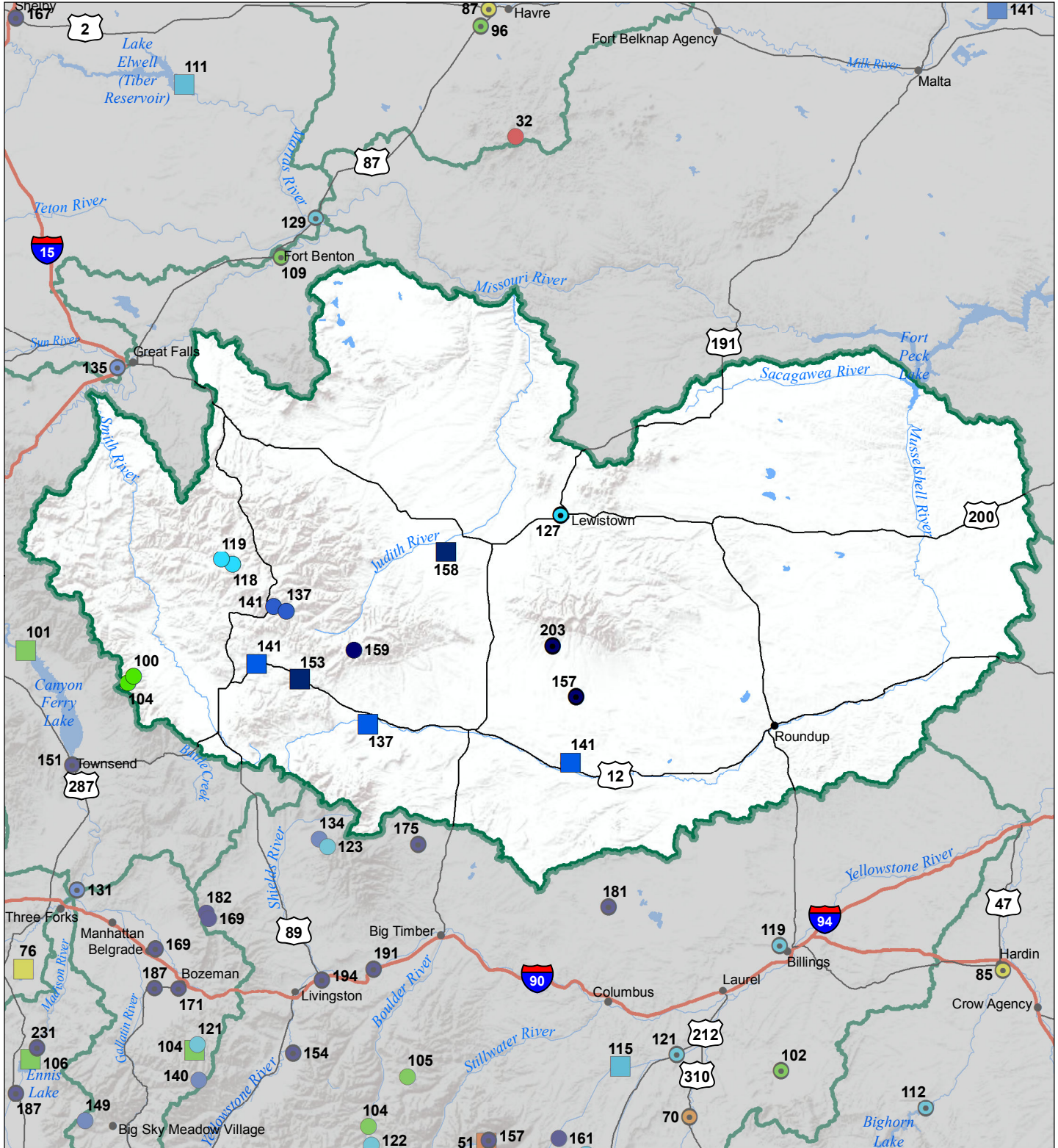
### Reservoirs Percent of Normal

- > 150%
- 131 - 150%
- 111 - 130%
- 91 - 110%
- 71 - 90%
- 51 - 70%
- 1 - 50%





# Smith-Judith-Musselshell River Basin Monthly Precipitation and Reservoir Levels Percentage of Normal May 1, 2019 (April 1, 2019 - May 1, 2019)



### Precipitation Percent of Normal

#### SNOTEL

- > 150%
- 131 - 150%
- 111 - 130%
- 91 - 110%
- 71 - 90%
- 51 - 70%
- 1 - 50%

#### COOP/ACIS

- > 150%
- 131 - 150%
- 111 - 130%
- 91 - 110%
- 71 - 90%
- 51 - 70%
- 1 - 50%

### Reservoirs Percent of Normal

- > 150%
- 131 - 150%
- 111 - 130%
- 91 - 110%
- 71 - 90%
- 51 - 70%
- 1 - 50%



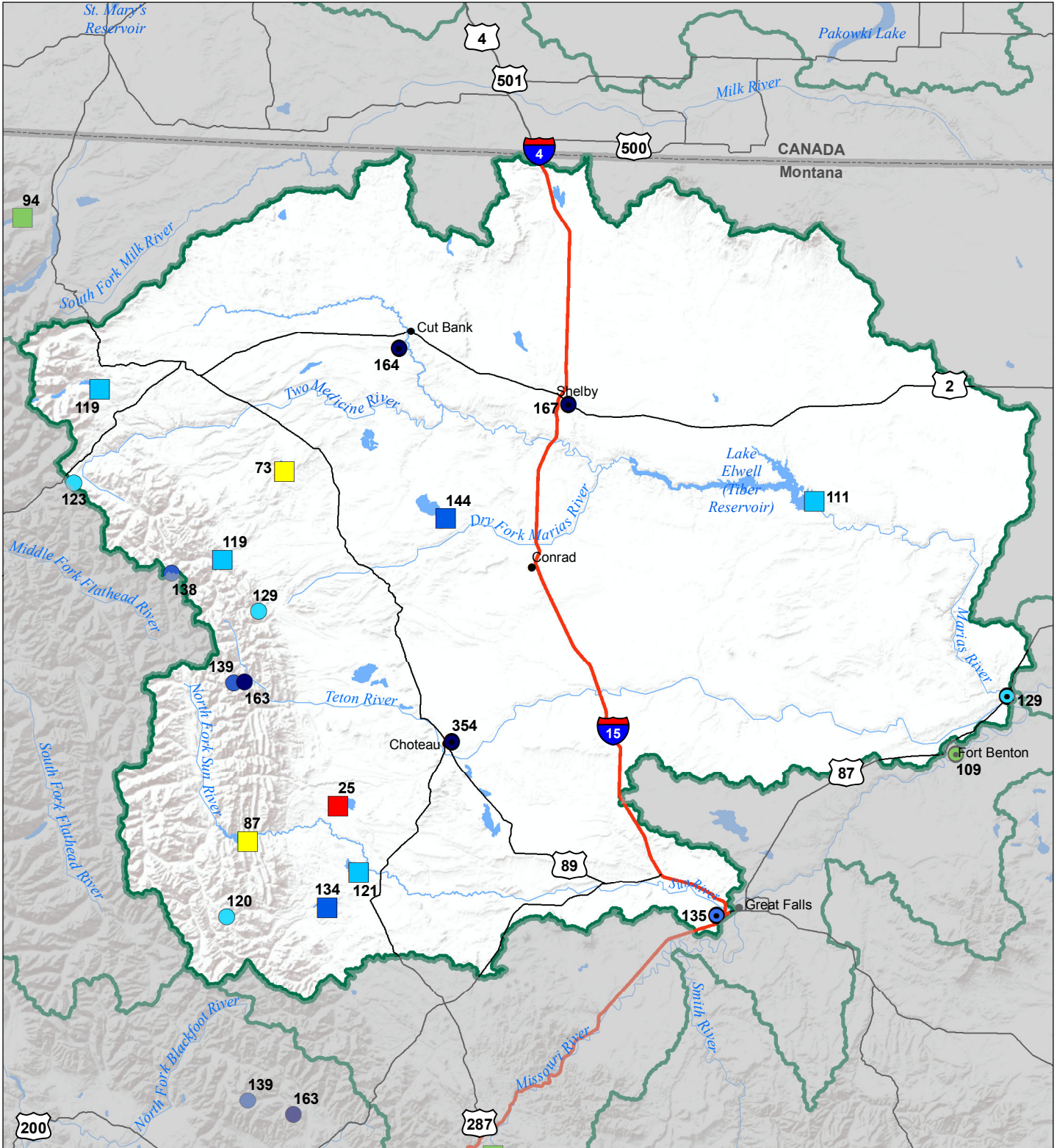


# Sun-Teton-Marias River Basin

## Monthly Precipitation and Reservoir Levels

### Percentage of Normal

#### May 1, 2019 (April 1, 2019 - May 1, 2019)



### Precipitation Percent of Normal

#### SNOTEL

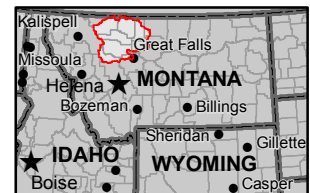
- > 150%
- 131 - 150%
- 111 - 130%
- 91 - 110%
- 71 - 90%
- 51 - 70%
- 1 - 50%

#### COOP/ACIS

- > 150%
- 131 - 150%
- 111 - 130%
- 91 - 110%
- 71 - 90%
- 51 - 70%
- 1 - 50%

### Reservoirs Percent of Normal

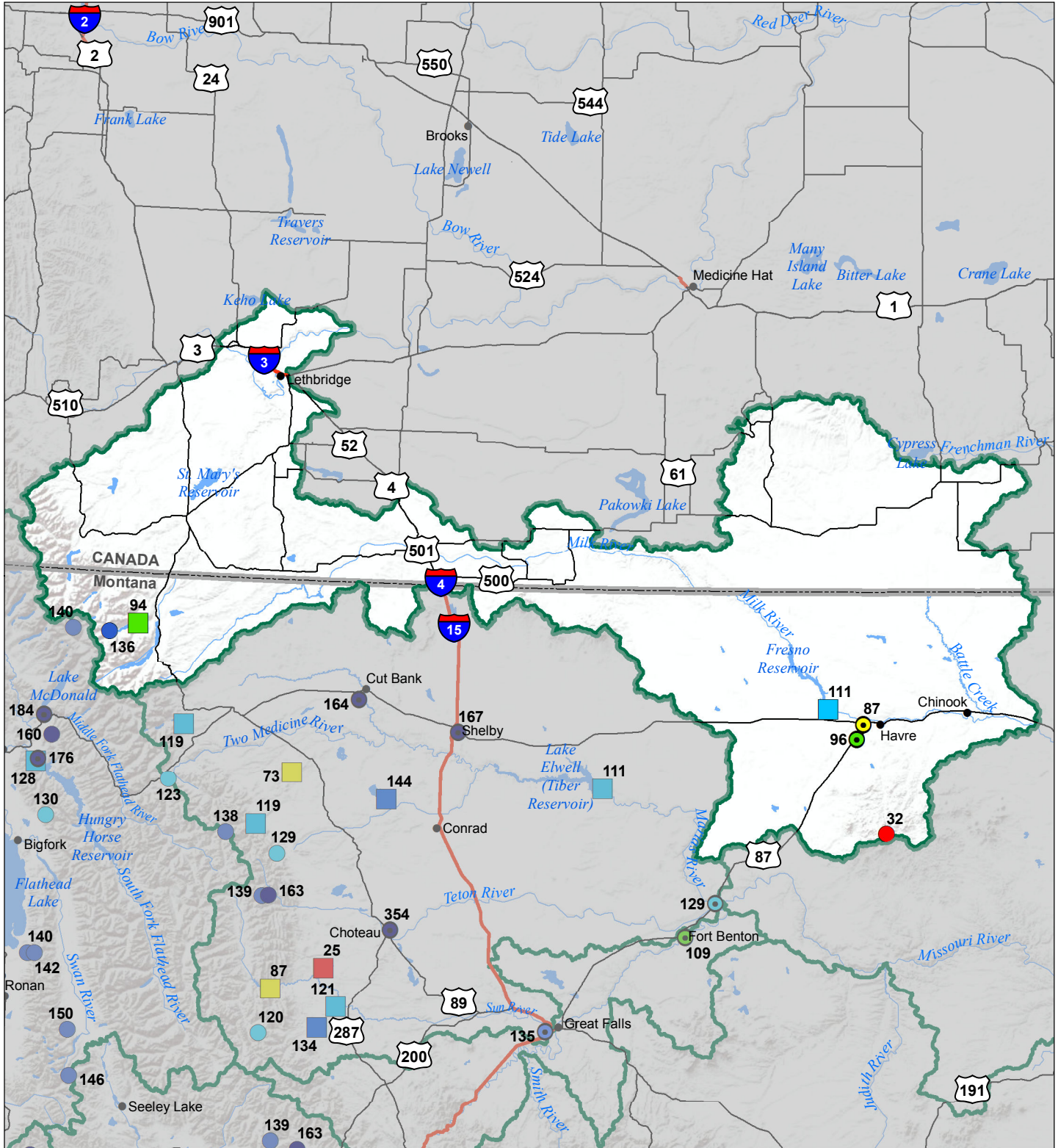
- > 150%
- 131 - 150%
- 111 - 130%
- 91 - 110%
- 71 - 90%
- 51 - 70%
- 1 - 50%



Montana State Library  
Natural Resource  
Information System



# St Mary's-Milk River Basin Monthly Precipitation and Reservoir Levels Percentage of Normal May 1, 2019 (April 1, 2019 - May 1, 2019)



### Precipitation Percent of Normal

#### SNOTEL

- > 150%
- 131 - 150%
- 111 - 130%
- 91 - 110%
- 71 - 90%
- 51 - 70%
- 1 - 50%

#### COOP/ACIS

- > 150%
- 131 - 150%
- 111 - 130%
- 91 - 110%
- 71 - 90%
- 51 - 70%
- 1 - 50%

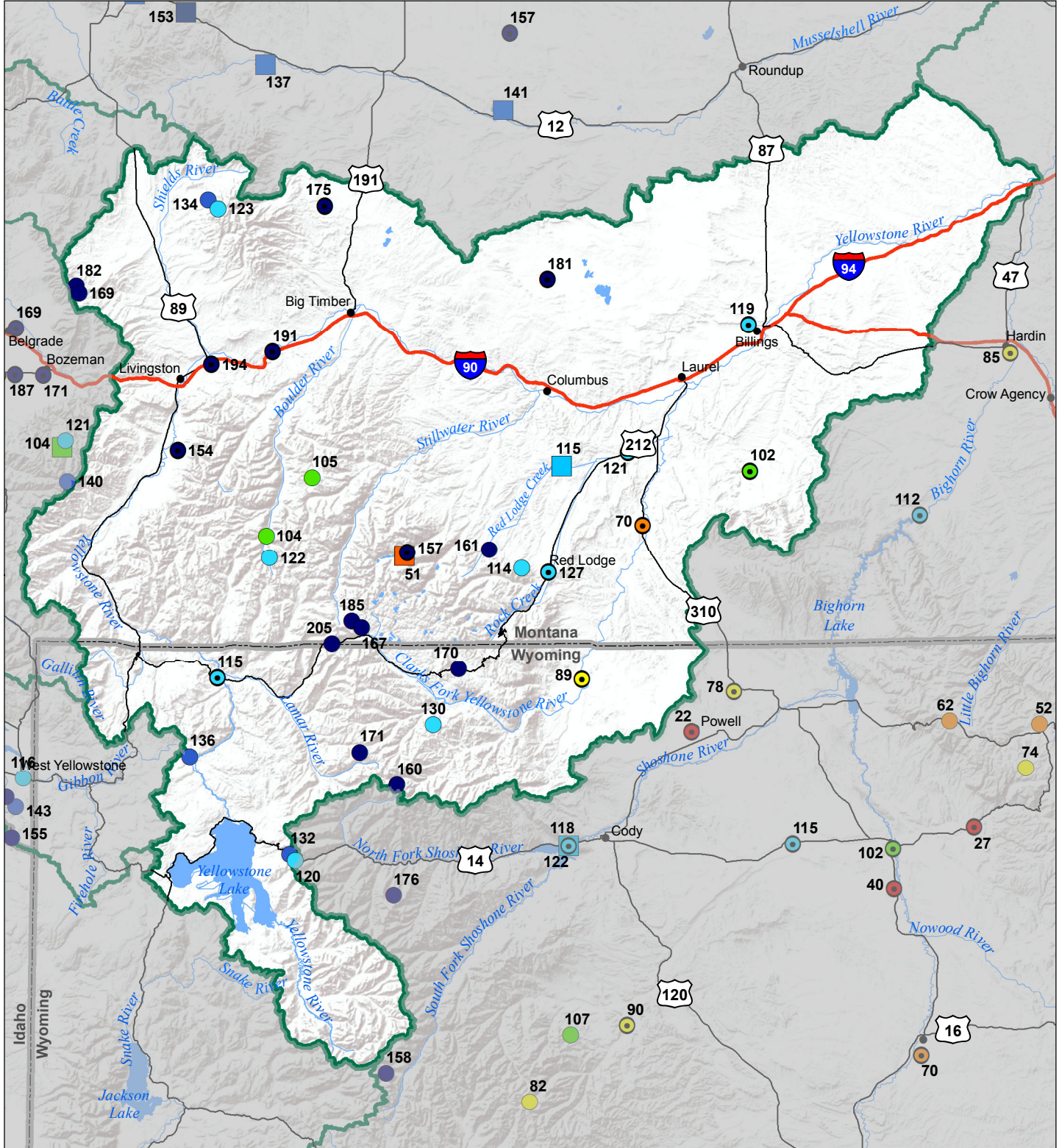
### Reservoirs Percent of Normal

- > 150%
- 131 - 150%
- 111 - 130%
- 91 - 110%
- 71 - 90%
- 51 - 70%
- 1 - 50%





# Upper Yellowstone River Basin Monthly Precipitation and Reservoir Levels Percentage of Normal May 1, 2019 (April 1, 2019 - May 1, 2019)



### Precipitation Percent of Normal

#### SNOTEL

- > 150%
- 131 - 150%
- 111 - 130%
- 91 - 110%
- 71 - 90%
- 51 - 70%
- 1 - 50%

#### COOP/ACIS

- > 150%
- 131 - 150%
- 111 - 130%
- 91 - 110%
- 71 - 90%
- 51 - 70%
- 1 - 50%

### Reservoirs Percent of Normal

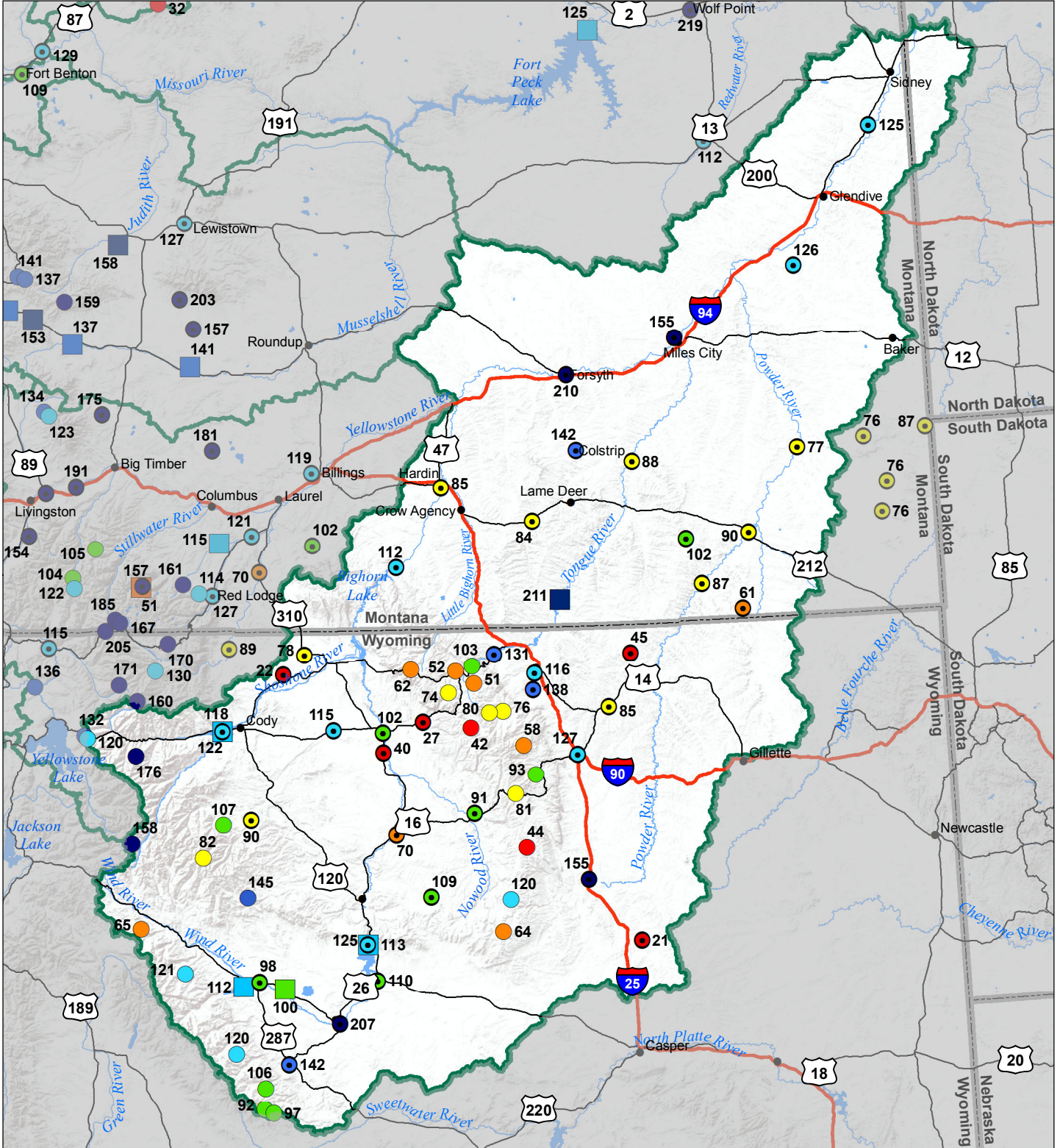
- > 150%
- 131 - 150%
- 111 - 130%
- 91 - 110%
- 71 - 90%
- 51 - 70%
- 1 - 50%



Montana State Library  
Natural Resource  
Information System



# Lower Yellowstone River Basin Monthly Precipitation and Reservoir Levels Percentage of Normal May 1, 2019 (April 1, 2019 - May 1, 2019)



### Precipitation Percent of Normal

#### SNOTEL

- > 150%
- 131 - 150%
- 111 - 130%
- 91 - 110%
- 71 - 90%
- 51 - 70%
- 1 - 50%

#### COOP/ACIS

- > 150%
- 131 - 150%
- 111 - 130%
- 91 - 110%
- 71 - 90%
- 51 - 70%
- 1 - 50%

### Reservoirs Percent of Normal

- > 150%
- 131 - 150%
- 111 - 130%
- 91 - 110%
- 71 - 90%
- 51 - 70%
- 1 - 50%

