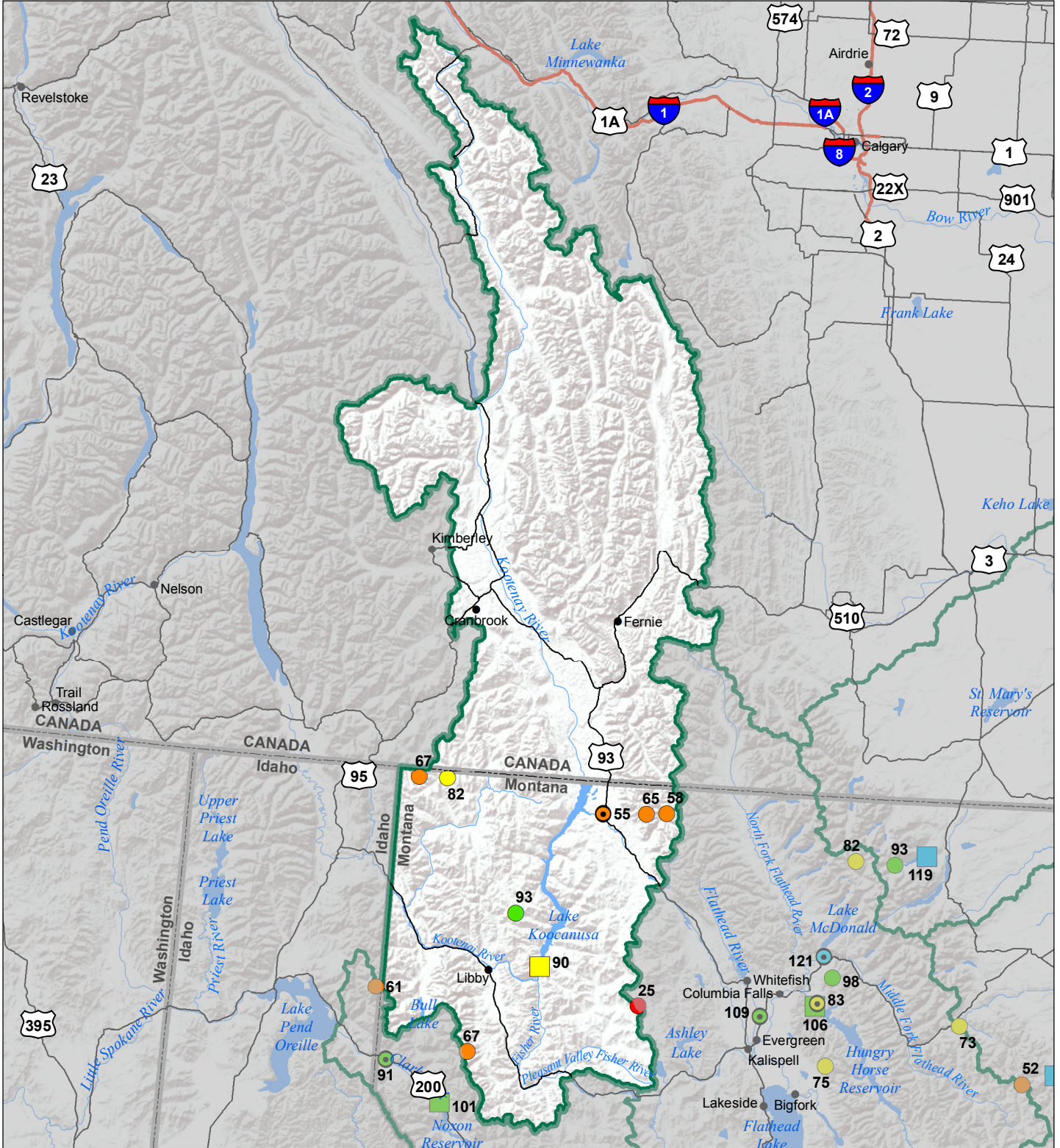


# Kootenai River Basin Monthly Precipitation and Reservoir Levels Percentage of Normal July 1, 2019 (June 1, 2019 - July 1, 2019)



### Precipitation Percent of Normal

#### SNOTEL

- > 150%
- 131 - 150%
- 111 - 130%
- 91 - 110%
- 71 - 90%
- 51 - 70%
- 1 - 50%

#### COOP/ACIS

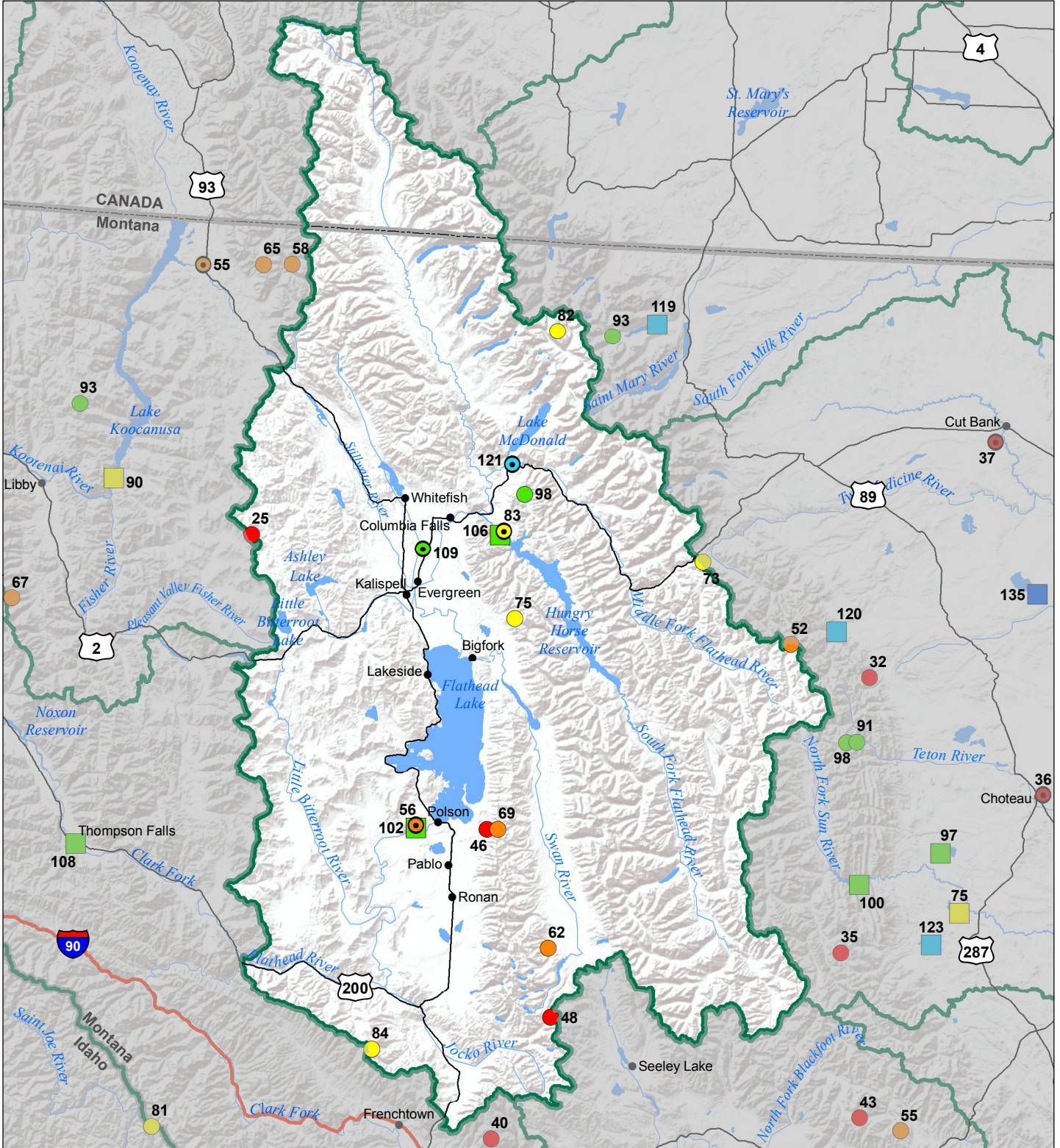
- > 150%
- 131 - 150%
- 111 - 130%
- 91 - 110%
- 71 - 90%
- 51 - 70%
- 1 - 50%

### Reservoirs Percent of Normal

- > 150%
- 131 - 150%
- 111 - 130%
- 91 - 110%
- 71 - 90%
- 51 - 70%
- 1 - 50%



# Flathead River Basin Monthly Precipitation and Reservoir Levels Percentage of Normal July 1, 2019 (June 1, 2019 - July 1, 2019)



### Precipitation Percent of Normal

#### SNOTEL

- > 150%
- 131 - 150%
- 111 - 130%
- 91 - 110%
- 71 - 90%
- 51 - 70%
- 1 - 50%

#### COOP/ACIS

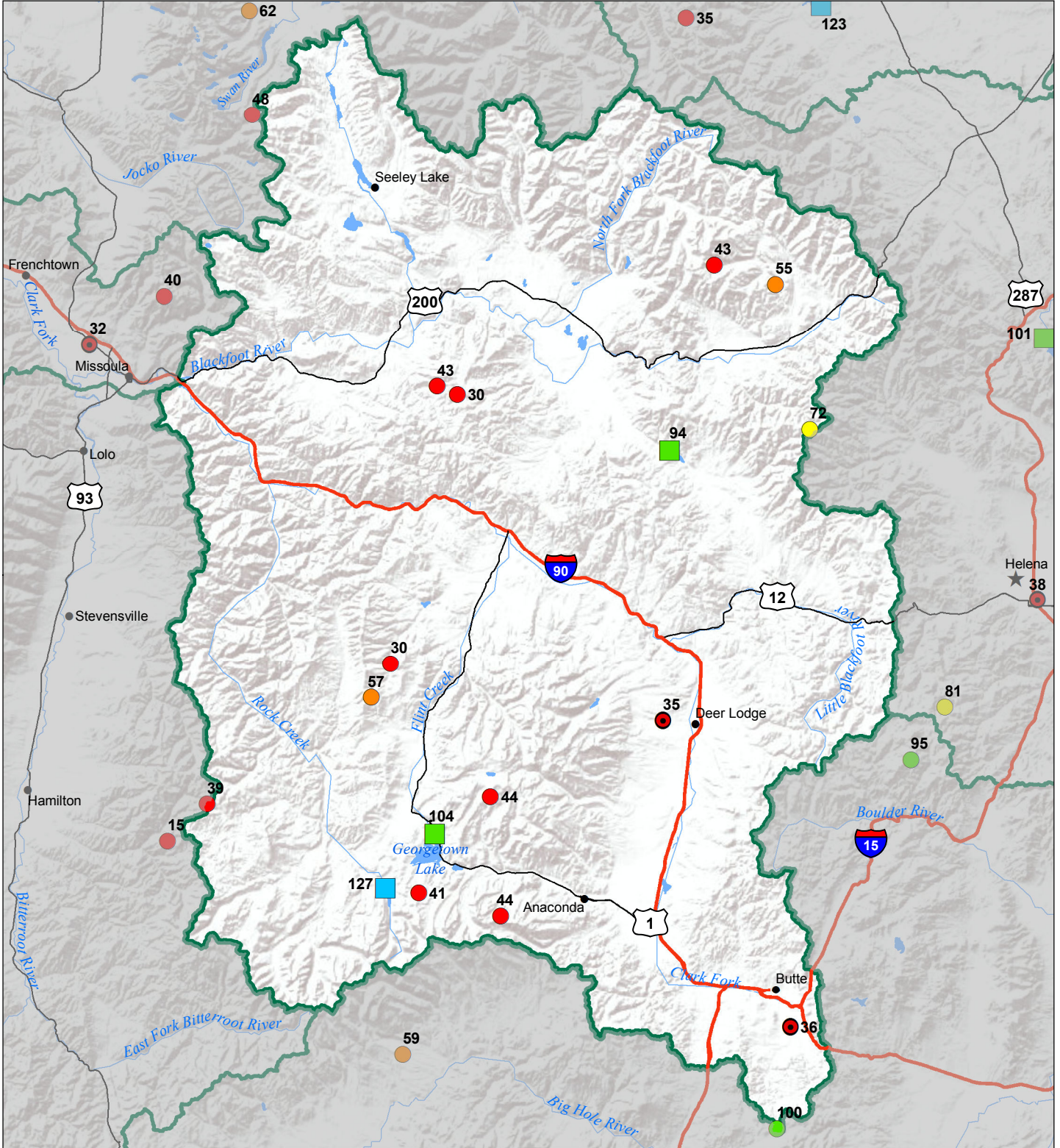
- > 150%
- 131 - 150%
- 111 - 130%
- 91 - 110%
- 71 - 90%
- 51 - 70%
- 1 - 50%

### Reservoirs Percent of Normal

- > 150%
- 131 - 150%
- 111 - 130%
- 91 - 110%
- 71 - 90%
- 51 - 70%
- 1 - 50%



# Upper Clark Fork River Basin Monthly Precipitation and Reservoir Levels Percentage of Normal July 1, 2019 (June 1, 2019 - July 1, 2019)



### Precipitation Percent of Normal

#### SNOTEL

- > 150%
- 131 - 150%
- 111 - 130%
- 91 - 110%
- 71 - 90%
- 51 - 70%
- 1 - 50%

#### COOP/ACIS

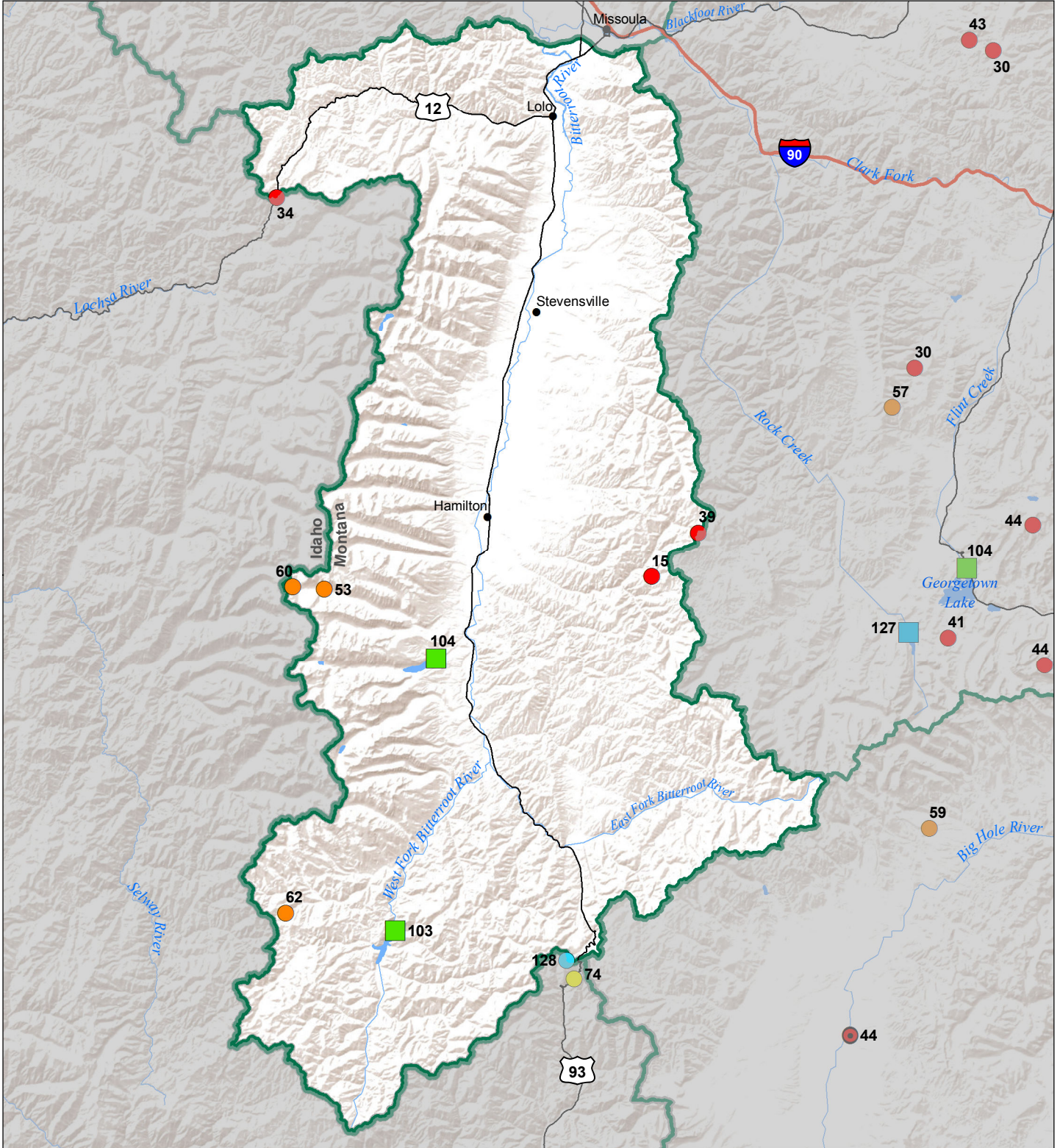
- > 150%
- 131 - 150%
- 111 - 130%
- 91 - 110%
- 71 - 90%
- 51 - 70%
- 1 - 50%

### Reservoirs Percent of Normal

- > 150%
- 131 - 150%
- 111 - 130%
- 91 - 110%
- 71 - 90%
- 51 - 70%
- 1 - 50%



# Bitterroot River Basin Monthly Precipitation and Reservoir Levels Percentage of Normal July 1, 2019 (June 1, 2019 - July 1, 2019)



### Precipitation Percent of Normal

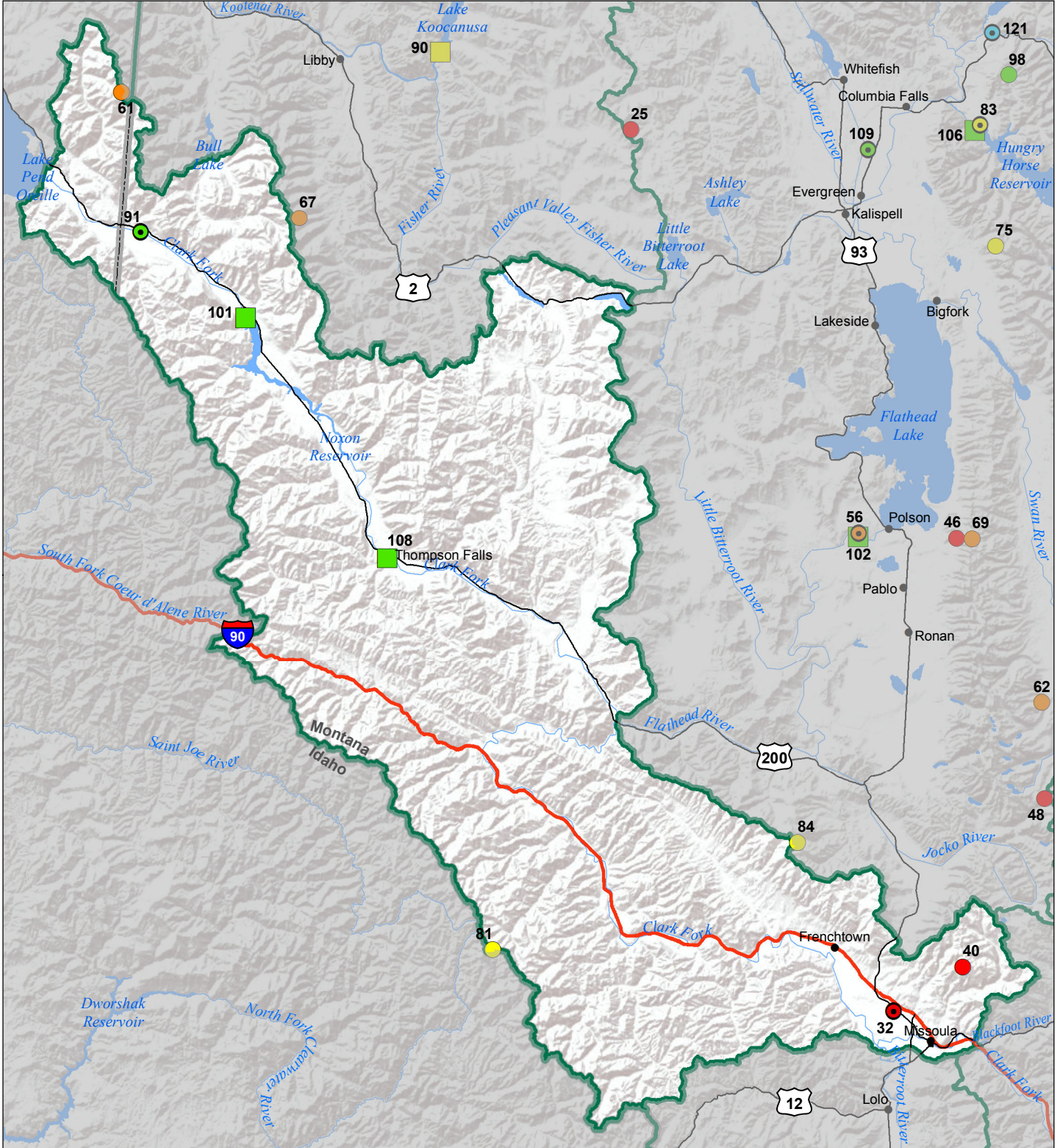
| SNOTEL   |  | COOP/ACIS                                      |  |
|--|--|--|--|
| <span style="color: blue;">●</span> > 150%     | <span style="color: yellow;">●</span> 71 - 90% | <span style="color: blue;">●</span> > 150%     | <span style="color: yellow;">●</span> 71 - 90% |
| <span style="color: blue;">●</span> 131 - 150% | <span style="color: orange;">●</span> 51 - 70% | <span style="color: blue;">●</span> 131 - 150% | <span style="color: orange;">●</span> 51 - 70% |
| <span style="color: cyan;">●</span> 111 - 130% | <span style="color: red;">●</span> 1 - 50%     | <span style="color: cyan;">●</span> 111 - 130% | <span style="color: red;">●</span> 1 - 50%     |
| <span style="color: green;">●</span> 91 - 110% |  | <span style="color: green;">●</span> 91 - 110% |  |

### Reservoirs Percent of Normal

|  |
|--|
| <span style="color: darkblue;">■</span> > 150% |
| <span style="color: blue;">■</span> 131 - 150% |
| <span style="color: cyan;">■</span> 111 - 130% |
| <span style="color: green;">■</span> 91 - 110% |
| <span style="color: yellow;">■</span> 71 - 90% |
| <span style="color: orange;">■</span> 51 - 70% |
| <span style="color: red;">■</span> 1 - 50%     |



# Lower Clark Fork River Basin Monthly Precipitation and Reservoir Levels Percentage of Normal July 1, 2019 (June 1, 2019 - July 1, 2019)



### Precipitation Percent of Normal

#### SNOTEL

- > 150%
- 131 - 150%
- 111 - 130%
- 91 - 110%
- 71 - 90%
- 51 - 70%
- 1 - 50%

#### COOP/ACIS

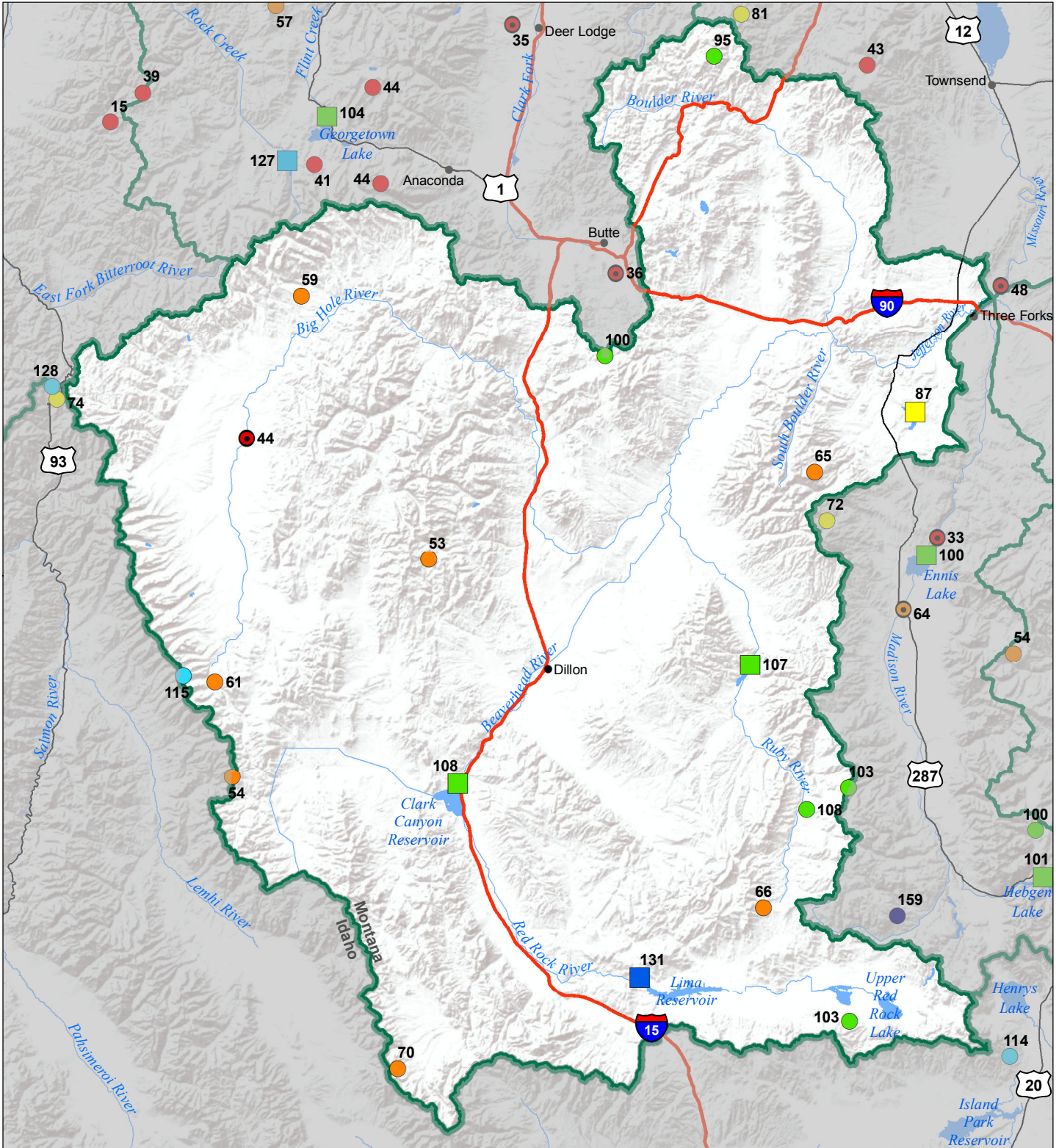
- > 150%
- 131 - 150%
- 111 - 130%
- 91 - 110%
- 71 - 90%
- 51 - 70%
- 1 - 50%

### Reservoirs Percent of Normal

- > 150%
- 131 - 150%
- 111 - 130%
- 91 - 110%
- 71 - 90%
- 51 - 70%
- 1 - 50%



# Jefferson River Basin Monthly Precipitation and Reservoir Levels Percentage of Normal July 1, 2019 (June 1, 2019 - July 1, 2019)

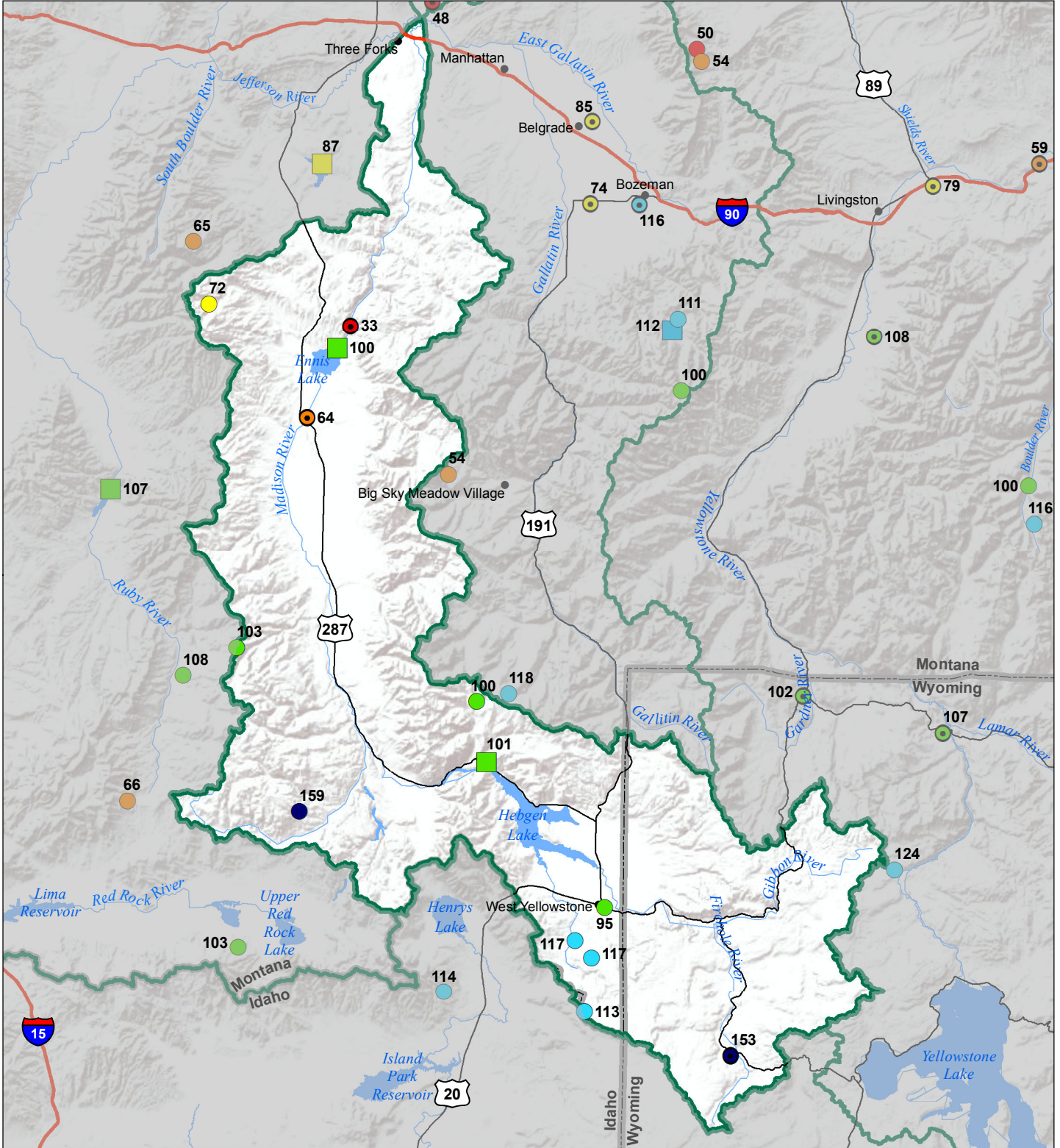


| Precipitation<br>Percent of Normal |            |              |            |
|------------------------------------|------------|--------------|------------|
| SNOTEL                             |            | COOP/ACIS    |            |
| ● > 150%                           | ● 71 - 90% | ● > 150%     | ● 71 - 90% |
| ● 131 - 150%                       | ● 51 - 70% | ● 131 - 150% | ● 51 - 70% |
| ● 111 - 130%                       | ● 1 - 50%  | ● 111 - 130% | ● 1 - 50%  |
| ● 91 - 110%                        |            | ● 91 - 110%  |            |

| Reservoirs<br>Percent of Normal |              |
|---------------------------------|--------------|
| ■ > 150%                        | ■ 131 - 150% |
| ■ 111 - 130%                    | ■ 91 - 110%  |
| ■ 71 - 90%                      | ■ 51 - 70%   |
| ■ 1 - 50%                       |              |



# Madison River Basin Monthly Precipitation and Reservoir Levels Percentage of Normal July 1, 2019 (June 1, 2019 - July 1, 2019)



### Precipitation Percent of Normal

#### SNOTEL

- > 150%
- 131 - 150%
- 111 - 130%
- 91 - 110%
- 71 - 90%
- 51 - 70%
- 1 - 50%

#### COOP/ACIS

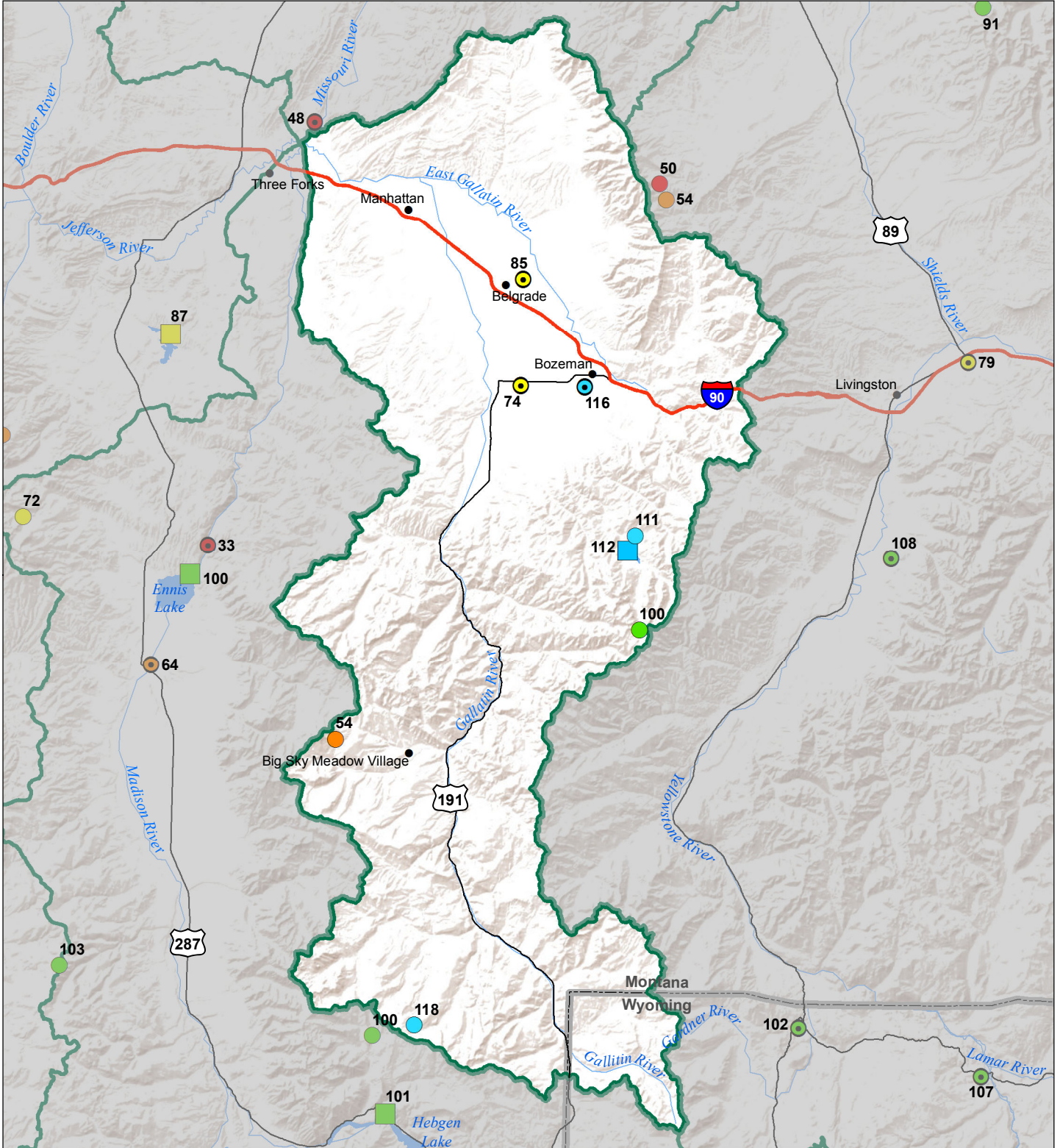
- > 150%
- 131 - 150%
- 111 - 130%
- 91 - 110%
- 71 - 90%
- 51 - 70%
- 1 - 50%

### Reservoirs Percent of Normal

- > 150%
- 131 - 150%
- 111 - 130%
- 91 - 110%
- 71 - 90%
- 51 - 70%
- 1 - 50%



# Gallatin River Basin Monthly Precipitation and Reservoir Levels Percentage of Normal July 1, 2019 (June 1, 2019 - July 1, 2019)



### Precipitation Percent of Normal

#### SNOTEL

- > 150%
- 131 - 150%
- 111 - 130%
- 91 - 110%
- 71 - 90%
- 51 - 70%
- 1 - 50%

#### COOP/ACIS

- > 150%
- 131 - 150%
- 111 - 130%
- 91 - 110%
- 71 - 90%
- 51 - 70%
- 1 - 50%

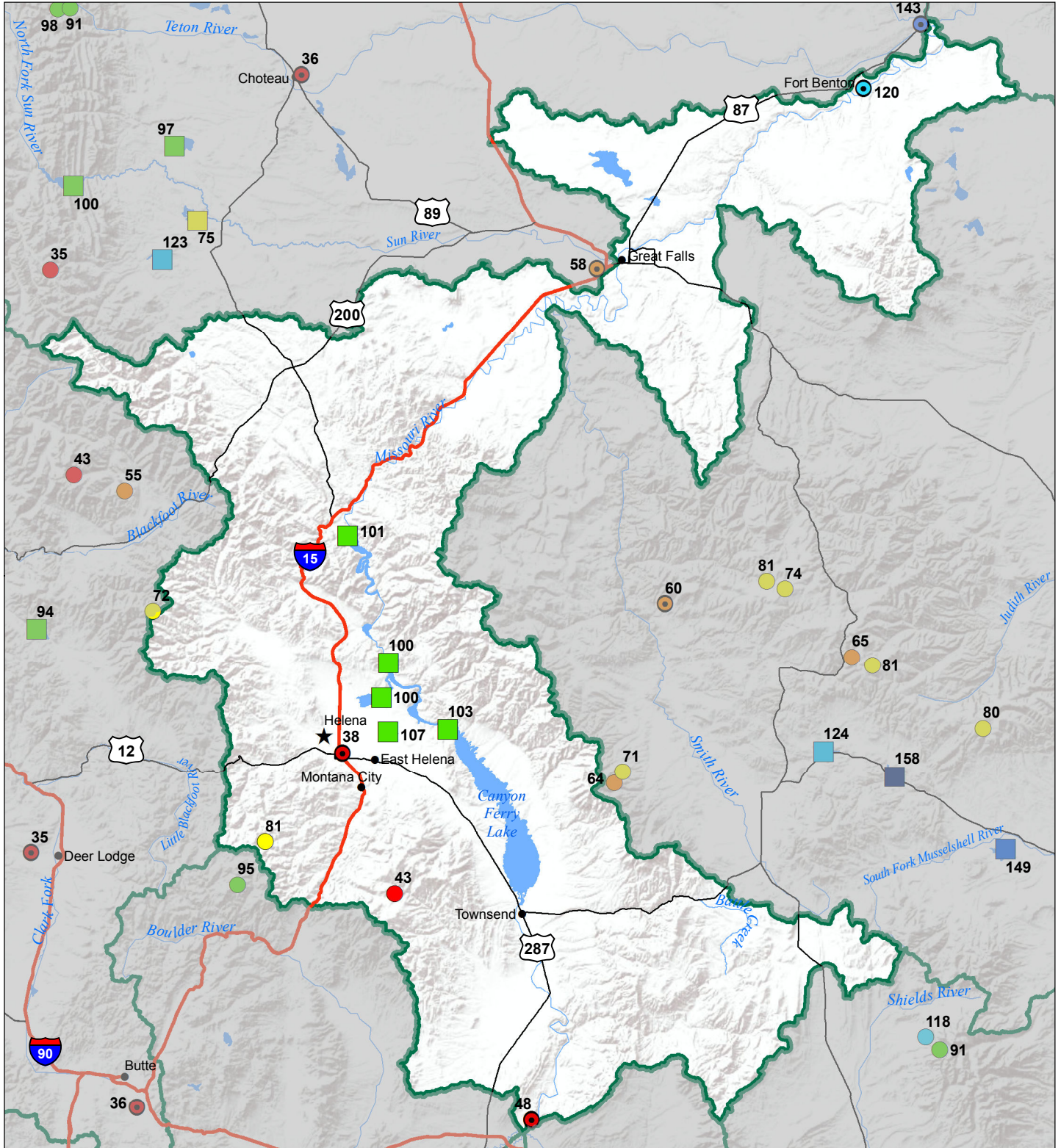
### Reservoirs Percent of Normal

- > 150%
- 131 - 150%
- 111 - 130%
- 91 - 110%
- 71 - 90%
- 51 - 70%
- 1 - 50%





# Headwaters Mainstem (Missouri) River Basin Monthly Precipitation and Reservoir Levels Percentage of Normal July 1, 2019 (June 1, 2019 - July 1, 2019)



### Precipitation Percent of Normal

#### SNOTEL

- > 150%
- 131 - 150%
- 111 - 130%
- 91 - 110%
- 71 - 90%
- 51 - 70%
- 1 - 50%

#### COOP/ACIS

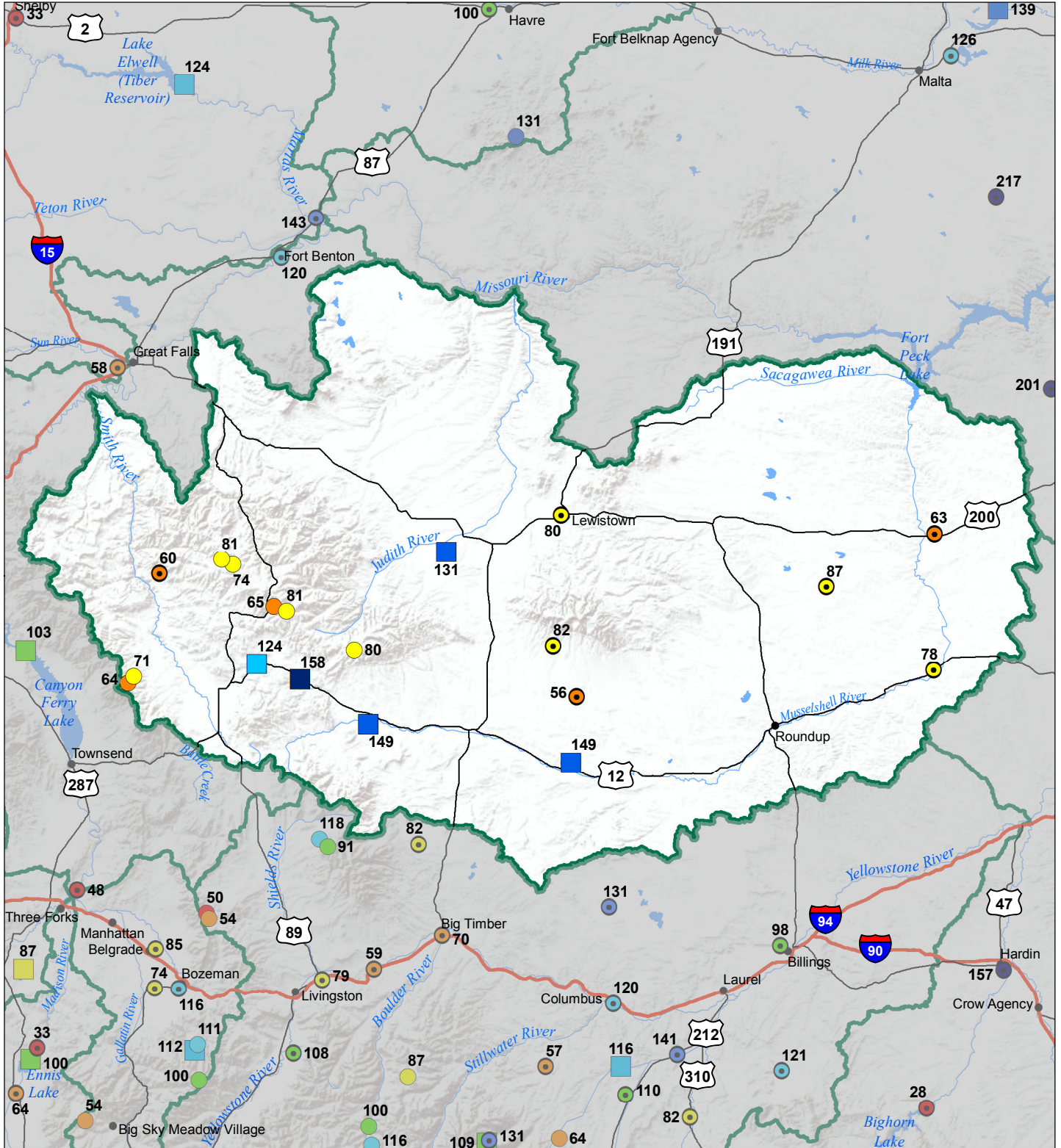
- > 150%
- 131 - 150%
- 111 - 130%
- 91 - 110%
- 71 - 90%
- 51 - 70%
- 1 - 50%

### Reservoirs Percent of Normal

- > 150%
- 131 - 150%
- 111 - 130%
- 91 - 110%
- 71 - 90%
- 51 - 70%
- 1 - 50%



# Smith-Judith-Musselshell River Basin Monthly Precipitation and Reservoir Levels Percentage of Normal July 1, 2019 (June 1, 2019 - July 1, 2019)



### Precipitation Percent of Normal

#### SNOTEL

- > 150%
- 131 - 150%
- 111 - 130%
- 91 - 110%
- 71 - 90%
- 51 - 70%
- 1 - 50%

#### COOP/ACIS

- > 150%
- 131 - 150%
- 111 - 130%
- 91 - 110%
- 71 - 90%
- 51 - 70%
- 1 - 50%

### Reservoirs Percent of Normal

- > 150%
- 131 - 150%
- 111 - 130%
- 91 - 110%
- 71 - 90%
- 51 - 70%
- 1 - 50%

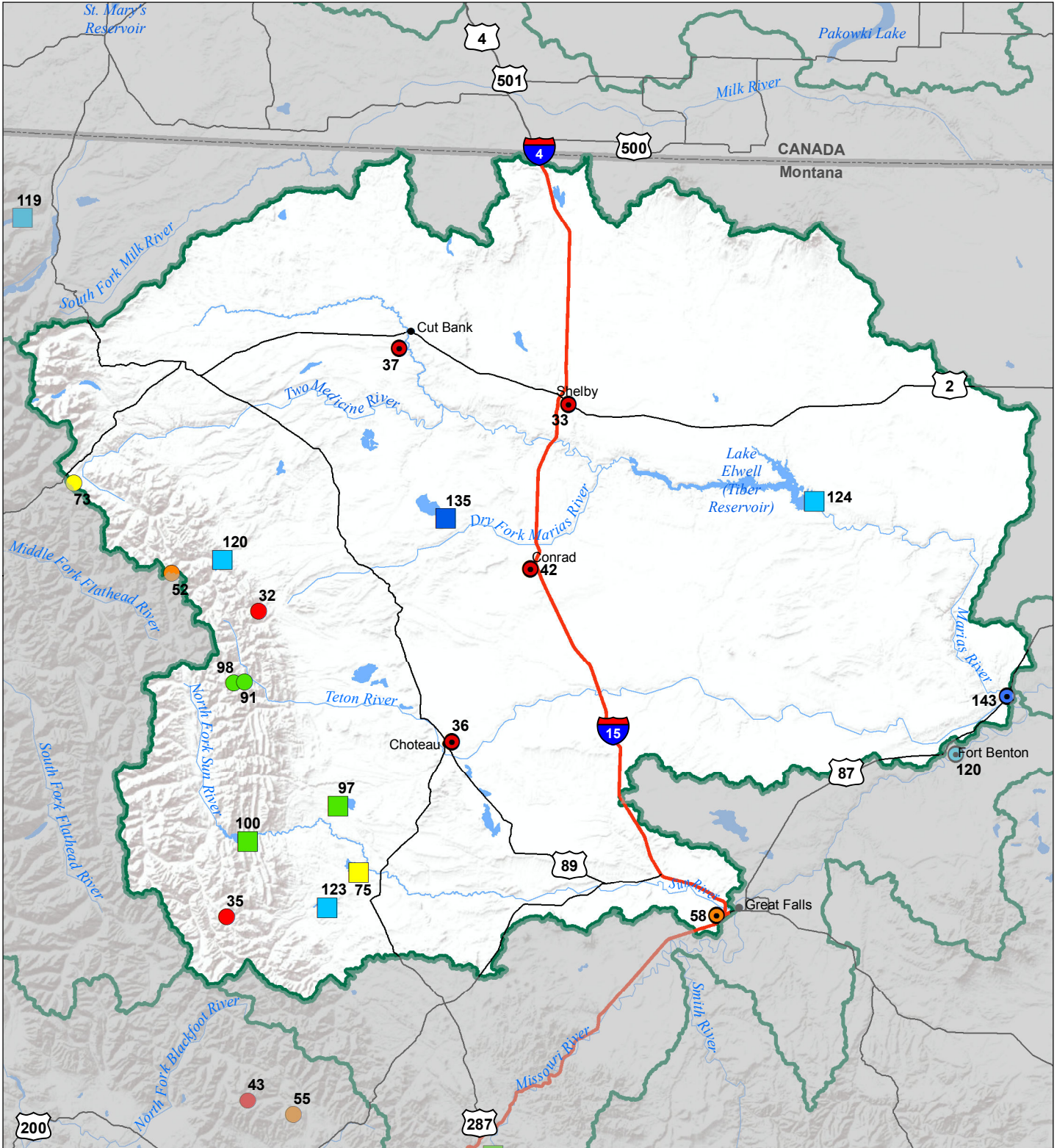


# Sun-Teton-Marias River Basin

## Monthly Precipitation and Reservoir Levels

### Percentage of Normal

#### July 1, 2019 (June 1, 2019 - July 1, 2019)



### Precipitation Percent of Normal

#### SNOTEL

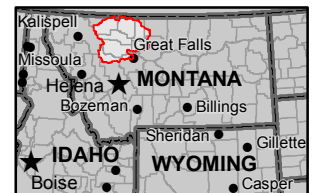
- > 150%
- 131 - 150%
- 111 - 130%
- 91 - 110%
- 71 - 90%
- 51 - 70%
- 1 - 50%

#### COOP/ACIS

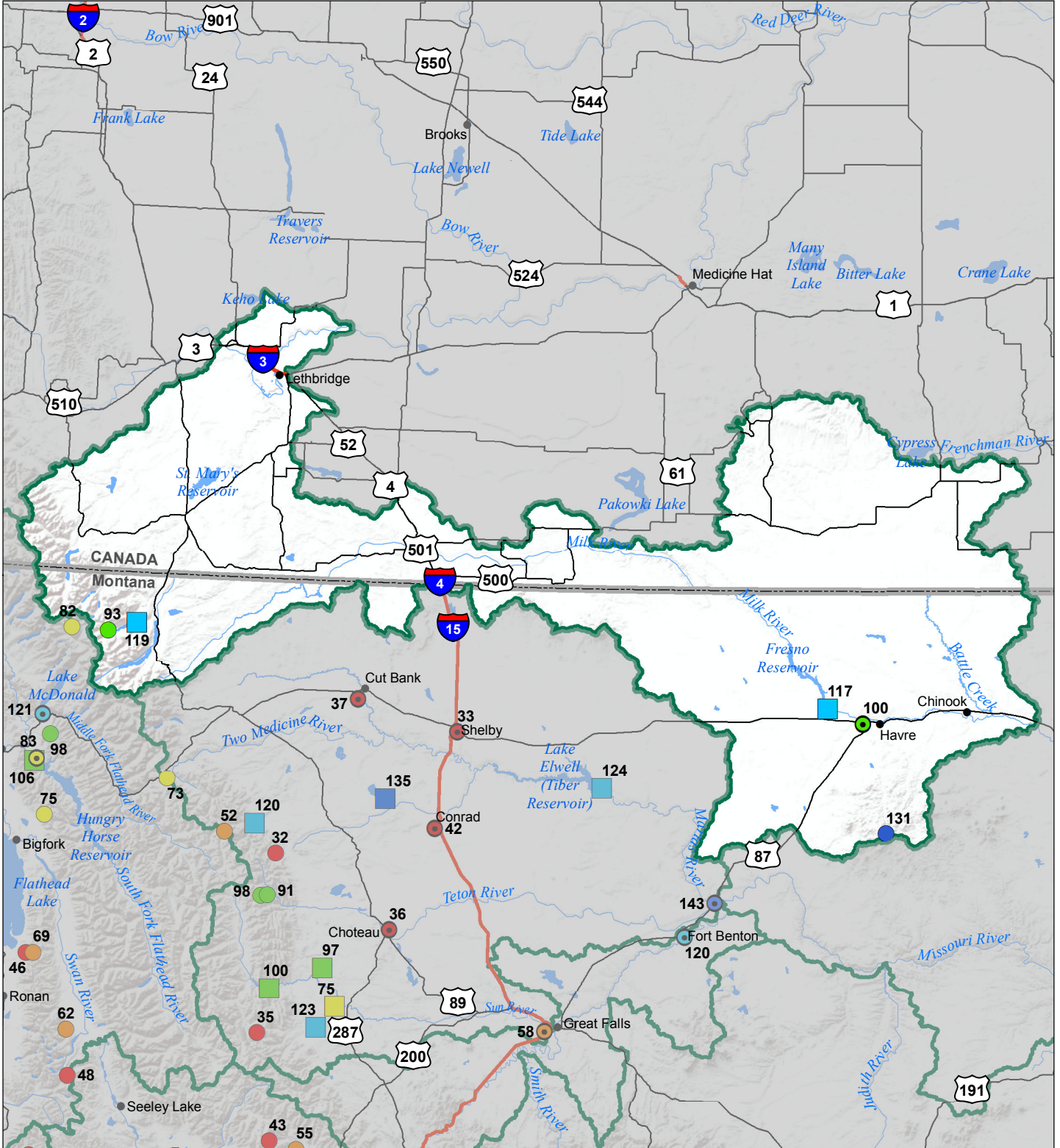
- > 150%
- 131 - 150%
- 111 - 130%
- 91 - 110%
- 71 - 90%
- 51 - 70%
- 1 - 50%

### Reservoirs Percent of Normal

- > 150%
- 131 - 150%
- 111 - 130%
- 91 - 110%
- 71 - 90%
- 51 - 70%
- 1 - 50%



# St Mary's-Milk River Basin Monthly Precipitation and Reservoir Levels Percentage of Normal July 1, 2019 (June 1, 2019 - July 1, 2019)



### Precipitation Percent of Normal

#### SNOTEL

- > 150%
- 131 - 150%
- 111 - 130%
- 91 - 110%
- 71 - 90%
- 51 - 70%
- 1 - 50%

#### COOP/ACIS

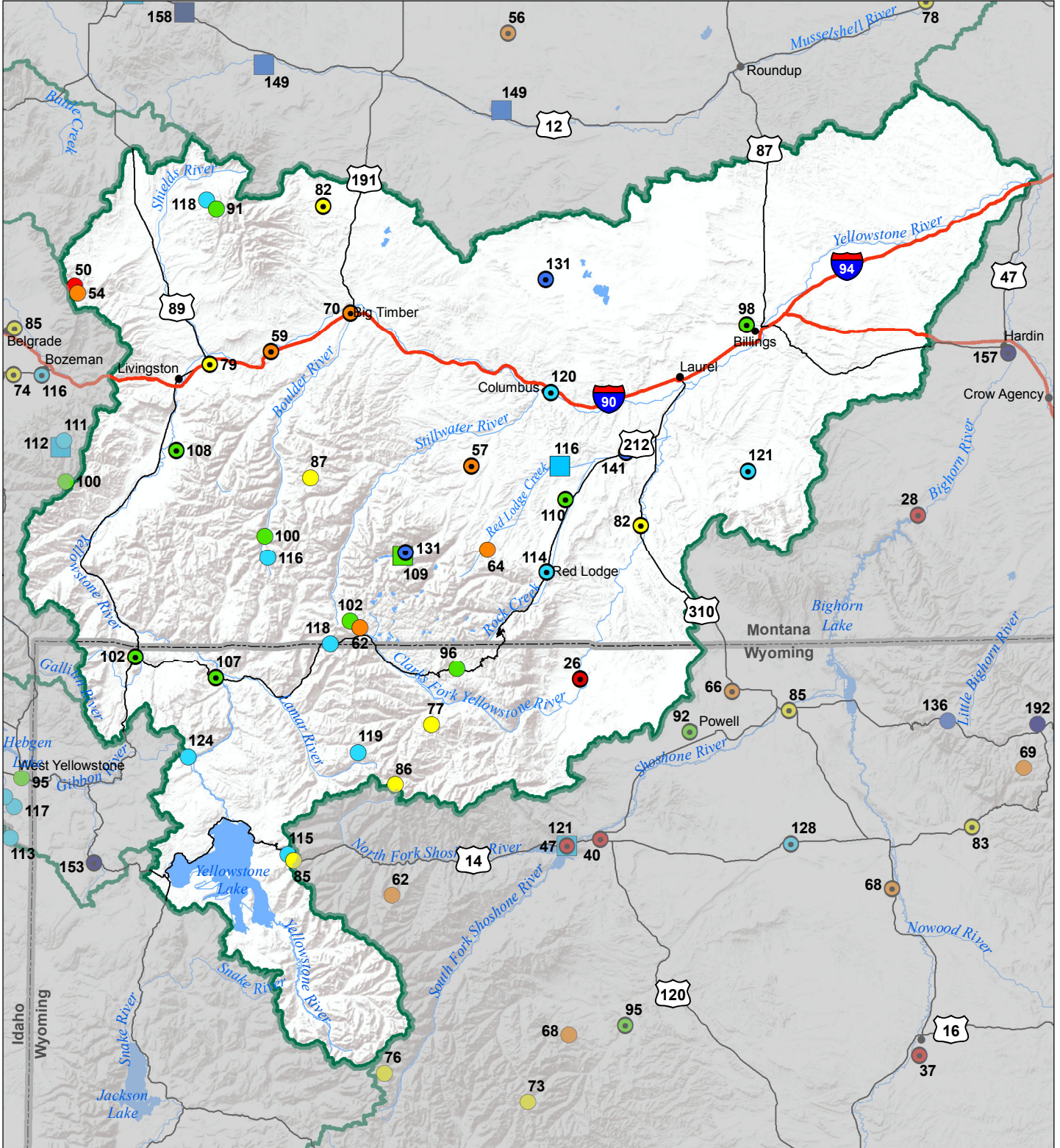
- > 150%
- 131 - 150%
- 111 - 130%
- 91 - 110%
- 71 - 90%
- 51 - 70%
- 1 - 50%

### Reservoirs Percent of Normal

- > 150%
- 131 - 150%
- 111 - 130%
- 91 - 110%
- 71 - 90%
- 51 - 70%
- 1 - 50%



# Upper Yellowstone River Basin Monthly Precipitation and Reservoir Levels Percentage of Normal July 1, 2019 (June 1, 2019 - July 1, 2019)



### Precipitation Percent of Normal

#### SNOTEL

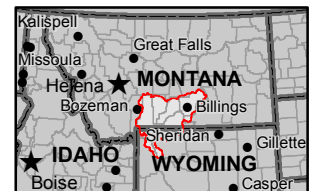
- > 150%
- 131 - 150%
- 111 - 130%
- 91 - 110%
- 71 - 90%
- 51 - 70%
- 1 - 50%

#### COOP/ACIS

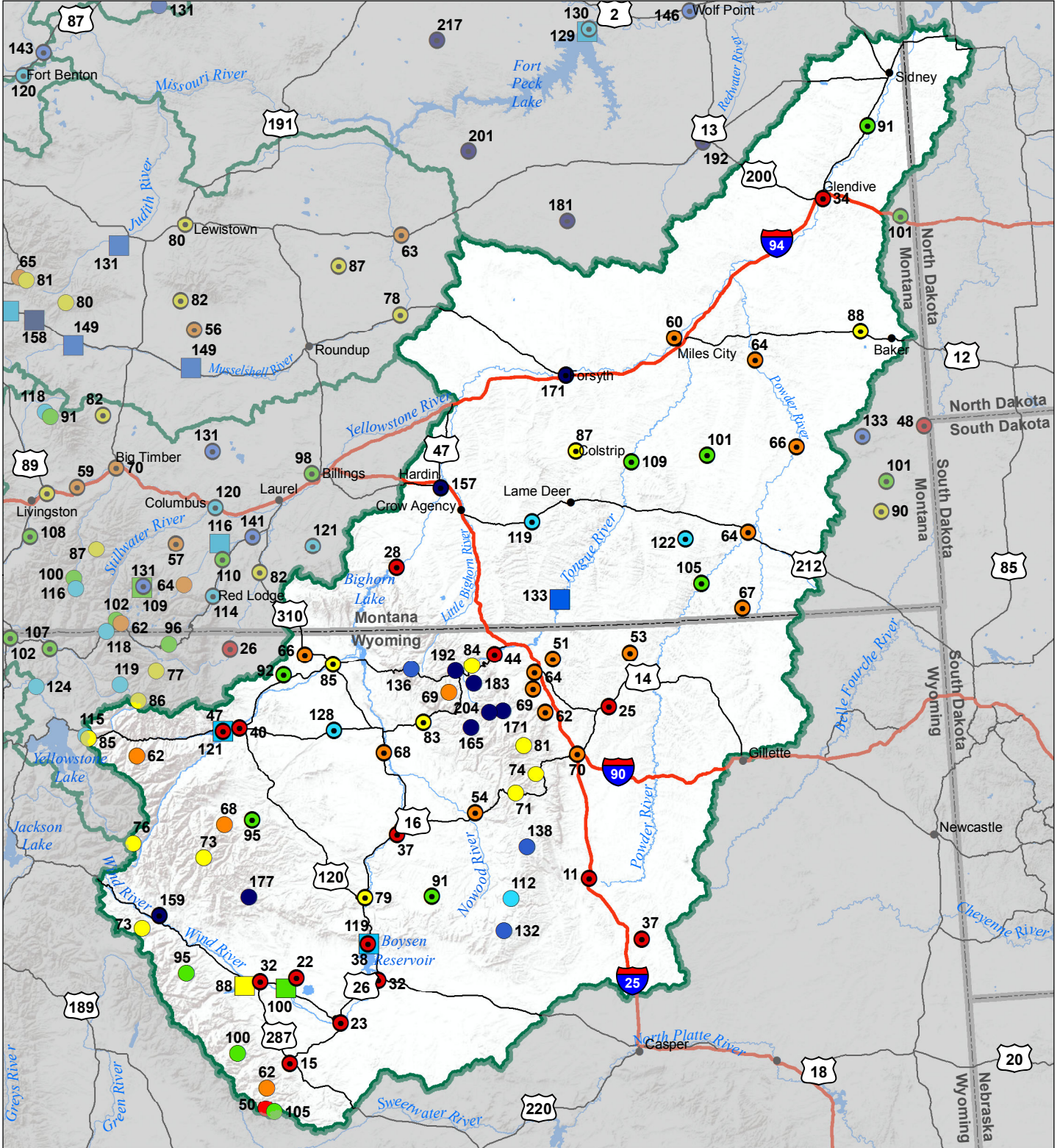
- > 150%
- 131 - 150%
- 111 - 130%
- 91 - 110%
- 71 - 90%
- 51 - 70%
- 1 - 50%

### Reservoirs Percent of Normal

- > 150%
- 131 - 150%
- 111 - 130%
- 91 - 110%
- 71 - 90%
- 51 - 70%
- 1 - 50%



# Lower Yellowstone River Basin Monthly Precipitation and Reservoir Levels Percentage of Normal July 1, 2019 (June 1, 2019 - July 1, 2019)



### Precipitation Percent of Normal

#### SNOTEL

- > 150%
- 131 - 150%
- 111 - 130%
- 91 - 110%
- 71 - 90%
- 51 - 70%
- 1 - 50%

#### COOP/ACIS

- > 150%
- 131 - 150%
- 111 - 130%
- 91 - 110%
- 71 - 90%
- 51 - 70%
- 1 - 50%

### Reservoirs Percent of Normal

- > 150%
- 131 - 150%
- 111 - 130%
- 91 - 110%
- 71 - 90%
- 51 - 70%
- 1 - 50%

