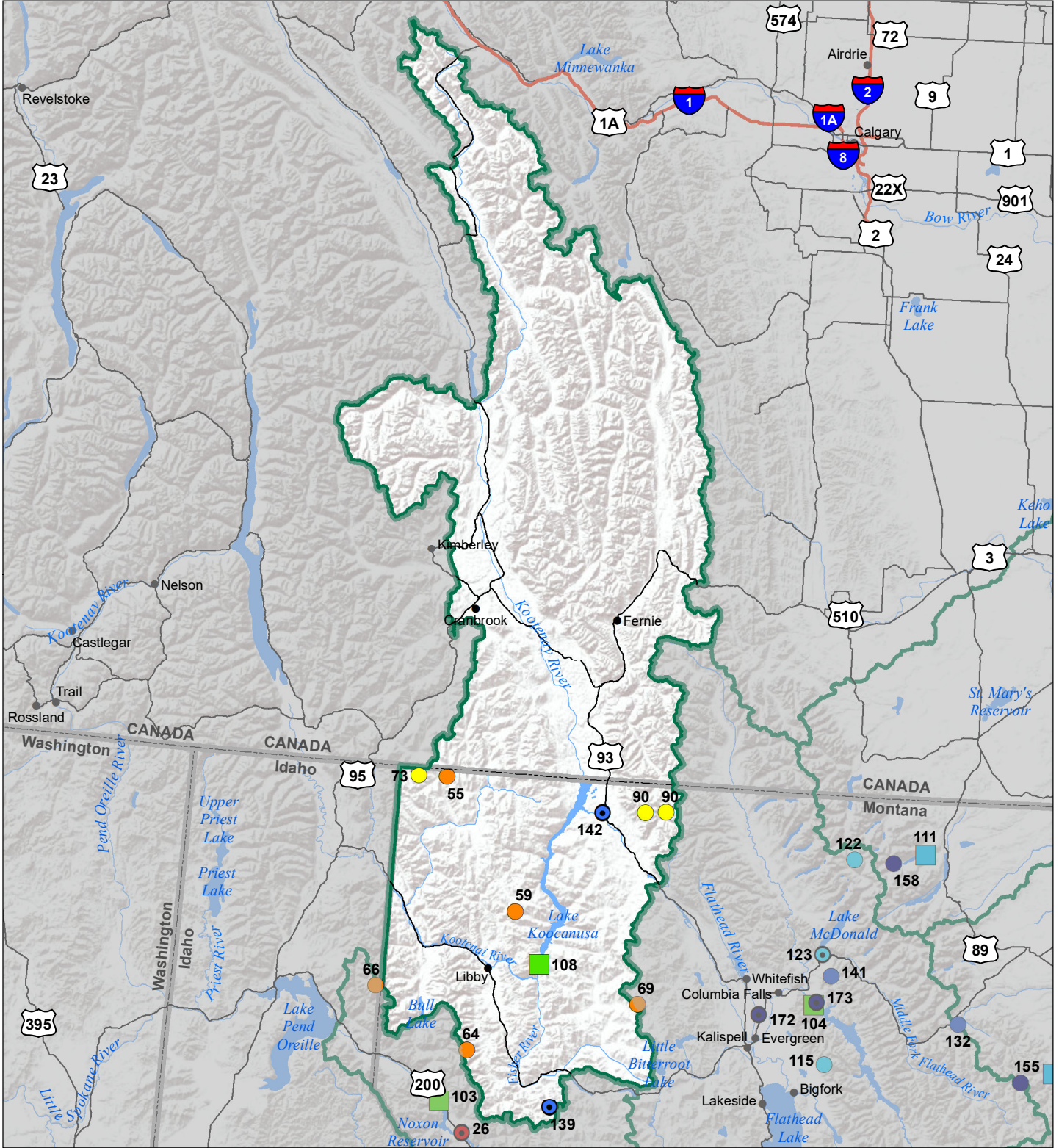


Kootenai River Basin Monthly Precipitation and Reservoir Levels Percentage of Normal July 1, 2020 (June 1, 2020 - July 1, 2020)



Precipitation Percent of Normal

SNOTEL

- > 150%
- 131 - 150%
- 111 - 130%
- 91 - 110%
- 71 - 90%
- 51 - 70%
- 1 - 50%

COOP/ACIS

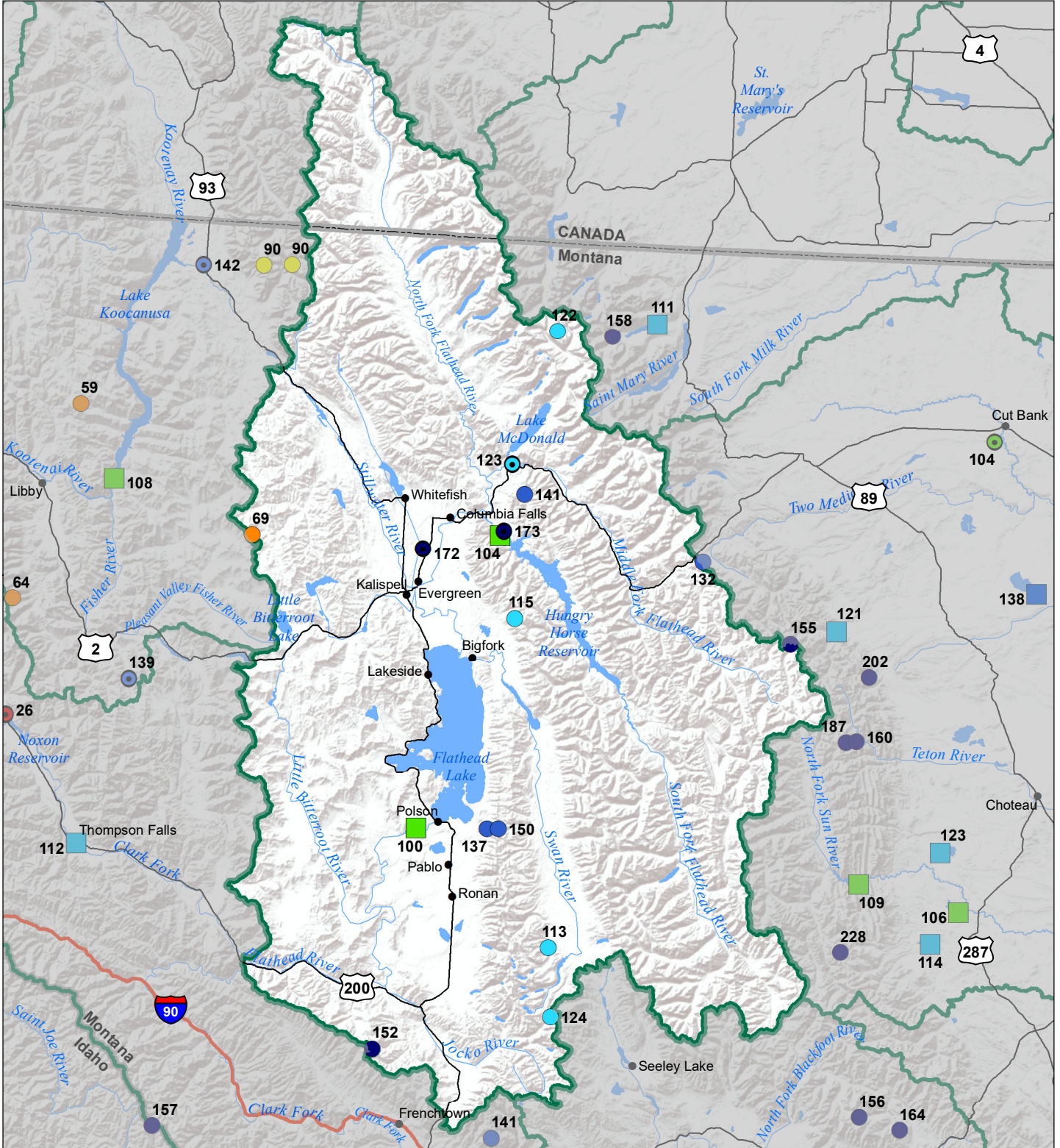
- > 150%
- 131 - 150%
- 111 - 130%
- 91 - 110%
- 71 - 90%
- 51 - 70%
- 1 - 50%

Reservoirs Percent of Normal

- > 150%
- 131 - 150%
- 111 - 130%
- 91 - 110%
- 71 - 90%
- 51 - 70%
- 1 - 50%



Flathead River Basin Monthly Precipitation and Reservoir Levels Percentage of Normal July 1, 2020 (June 1, 2020 - July 1, 2020)



Precipitation Percent of Normal

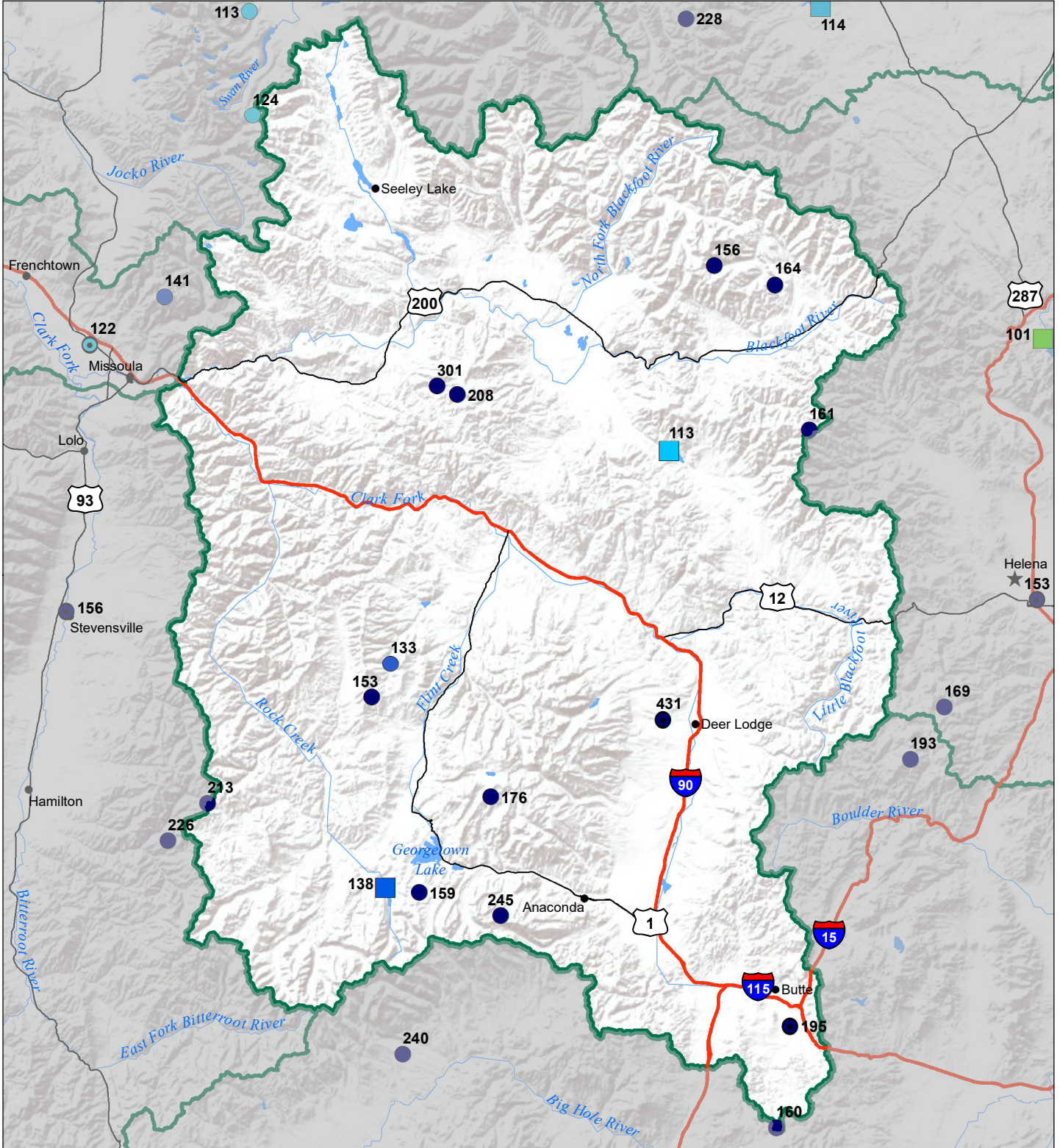
SNOTEL		COOP/ACIS	
● > 150%	● 71 - 90%	● > 150%	● 71 - 90%
● 131 - 150%	● 51 - 70%	● 131 - 150%	● 51 - 70%
● 111 - 130%	● 1 - 50%	● 111 - 130%	● 1 - 50%
● 91 - 110%		● 91 - 110%	

Reservoirs Percent of Normal

■ > 150%
■ 131 - 150%
■ 111 - 130%
■ 91 - 110%
■ 71 - 90%
■ 51 - 70%
■ 1 - 50%



Upper Clark Fork River Basin Monthly Precipitation and Reservoir Levels Percentage of Normal July 1, 2020 (June 1, 2020 - July 1, 2020)



Precipitation Percent of Normal

SNOTEL

- > 150%
- 71 - 90%
- 131 - 150%
- 51 - 70%
- 111 - 130%
- 1 - 50%
- 91 - 110%

COOP/ACIS

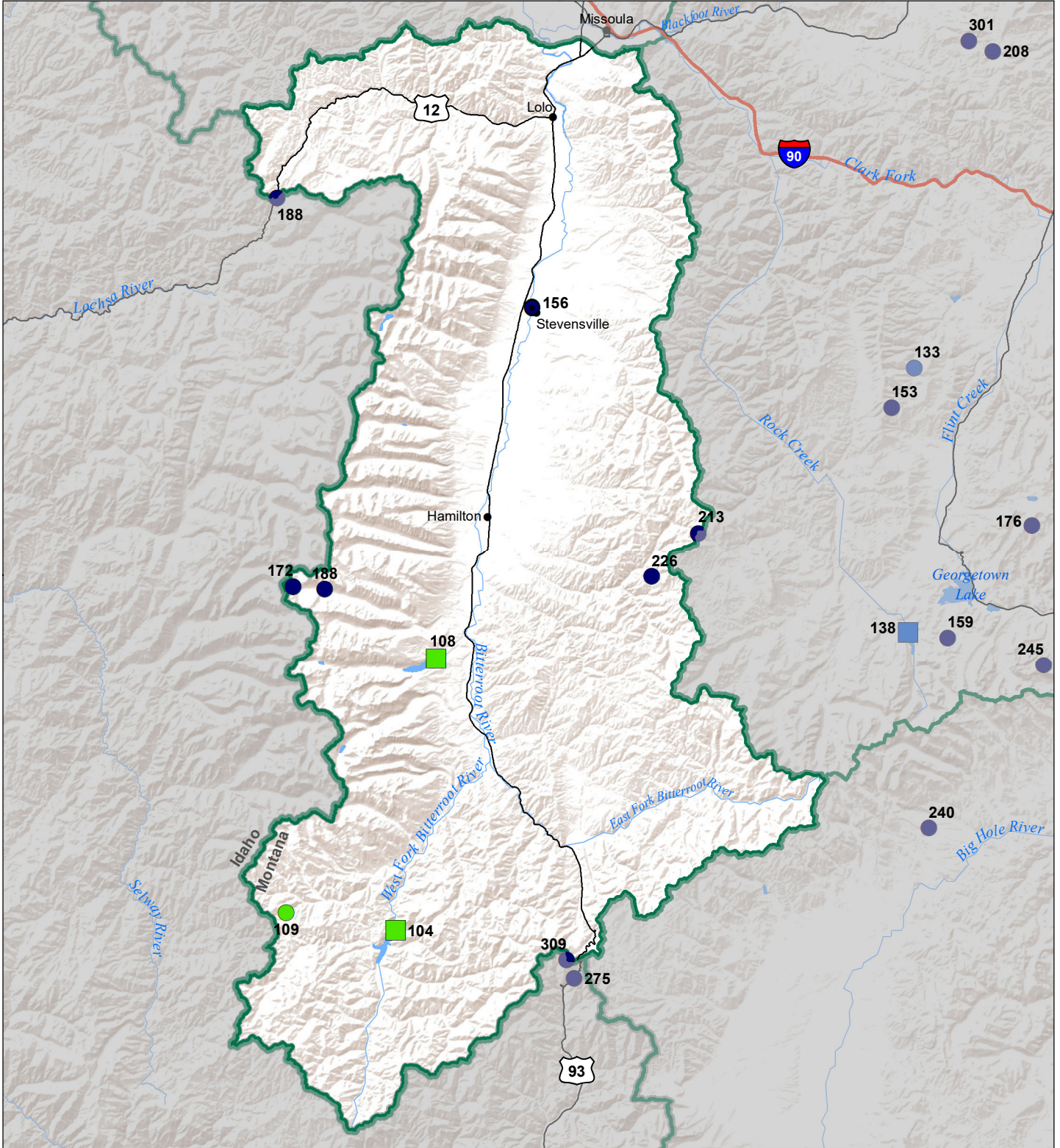
- > 150%
- 71 - 90%
- 131 - 150%
- 51 - 70%
- 111 - 130%
- 1 - 50%
- 91 - 110%

Reservoirs Percent of Normal

- > 150%
- 131 - 150%
- 111 - 130%
- 91 - 110%
- 71 - 90%
- 51 - 70%
- 1 - 50%



Bitterroot River Basin Monthly Precipitation and Reservoir Levels Percentage of Normal July 1, 2020 (June 1, 2020 - July 1, 2020)



Precipitation Percent of Normal

SNOTEL

- > 150%
- 131 - 150%
- 111 - 130%
- 91 - 110%
- 71 - 90%
- 51 - 70%
- 1 - 50%

COOP/ACIS

- > 150%
- 131 - 150%
- 111 - 130%
- 91 - 110%
- 71 - 90%
- 51 - 70%
- 1 - 50%

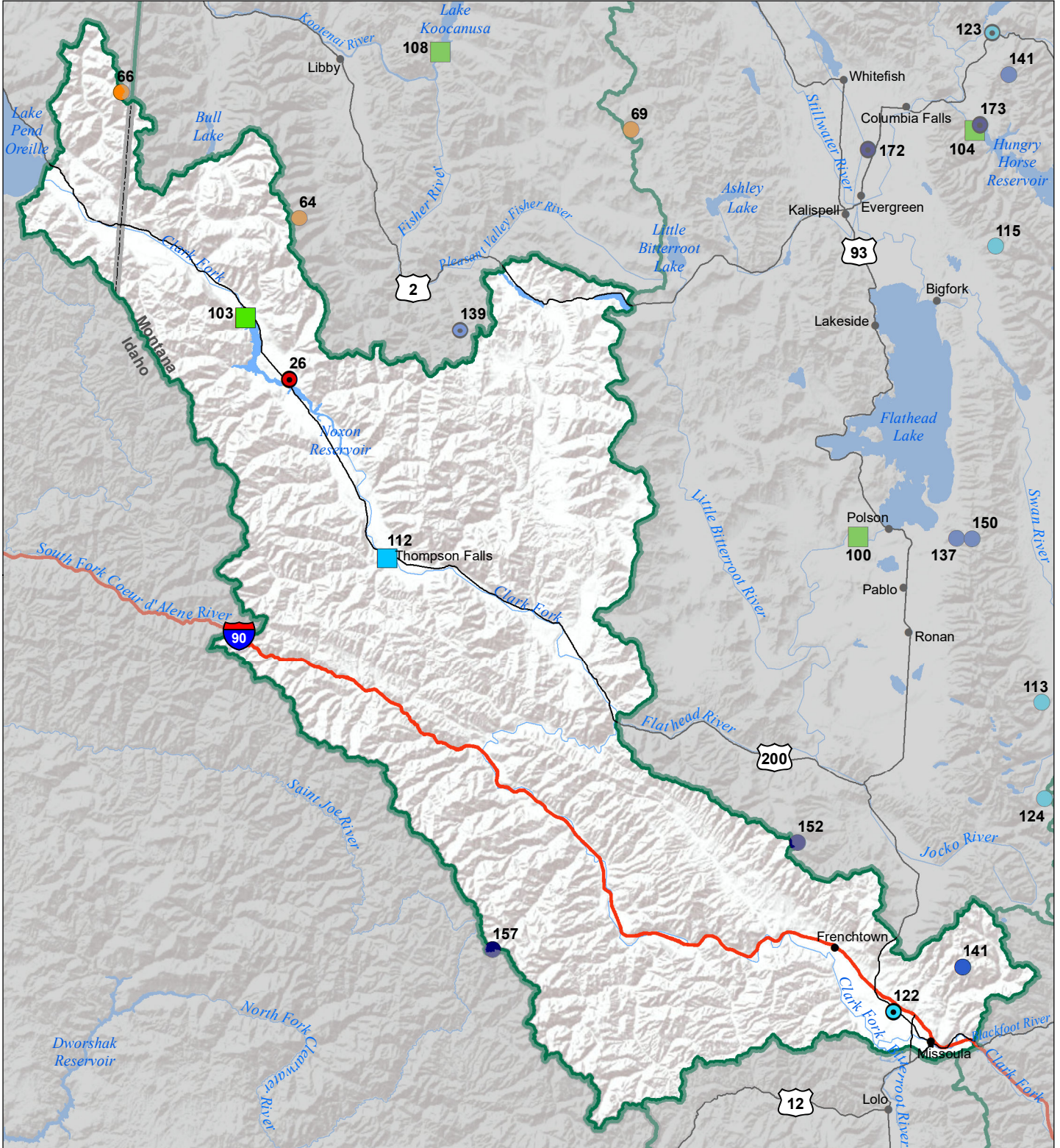
Reservoirs Percent of Normal

- > 150%
- 131 - 150%
- 111 - 130%
- 91 - 110%
- 71 - 90%
- 51 - 70%
- 1 - 50%



Montana State Library
Natural Resource
Information System

Lower Clark Fork River Basin Monthly Precipitation and Reservoir Levels Percentage of Normal July 1, 2020 (June 1, 2020 - July 1, 2020)



Precipitation Percent of Normal

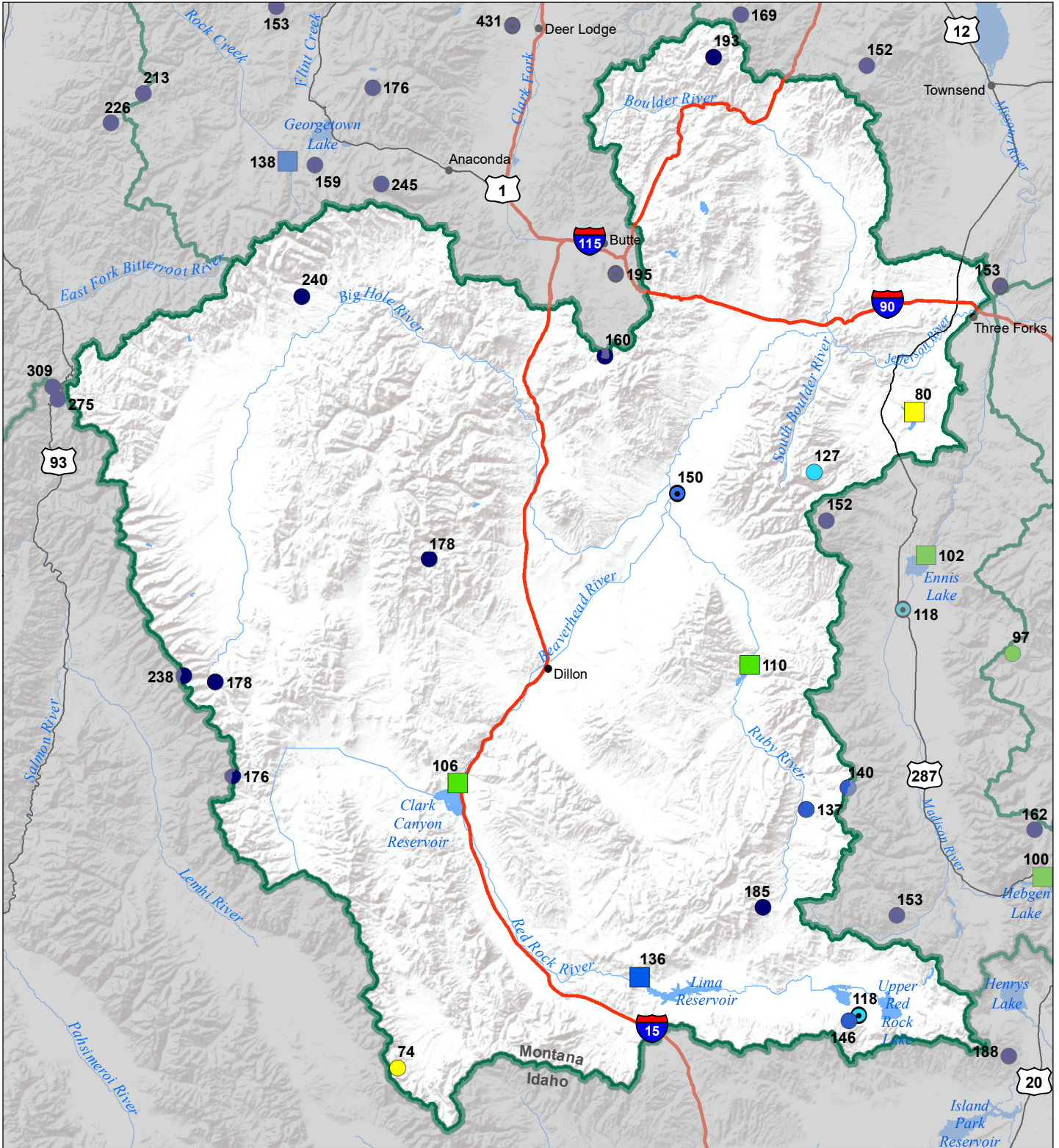
SNOTEL		COOP/ACIS	
● > 150%	● 71 - 90%	● > 150%	● 71 - 90%
● 131 - 150%	● 51 - 70%	● 131 - 150%	● 51 - 70%
● 111 - 130%	● 1 - 50%	● 111 - 130%	● 1 - 50%
● 91 - 110%		● 91 - 110%	

Reservoirs Percent of Normal

■ > 150%
■ 131 - 150%
■ 111 - 130%
■ 91 - 110%
■ 71 - 90%
■ 51 - 70%
■ 1 - 50%



Jefferson River Basin Monthly Precipitation and Reservoir Levels Percentage of Normal July 1, 2020 (June 1, 2020 - July 1, 2020)



Precipitation Percent of Normal

SNOTEL

- > 150%
- 131 - 150%
- 111 - 130%
- 91 - 110%
- 71 - 90%
- 51 - 70%
- 1 - 50%

COOP/ACIS

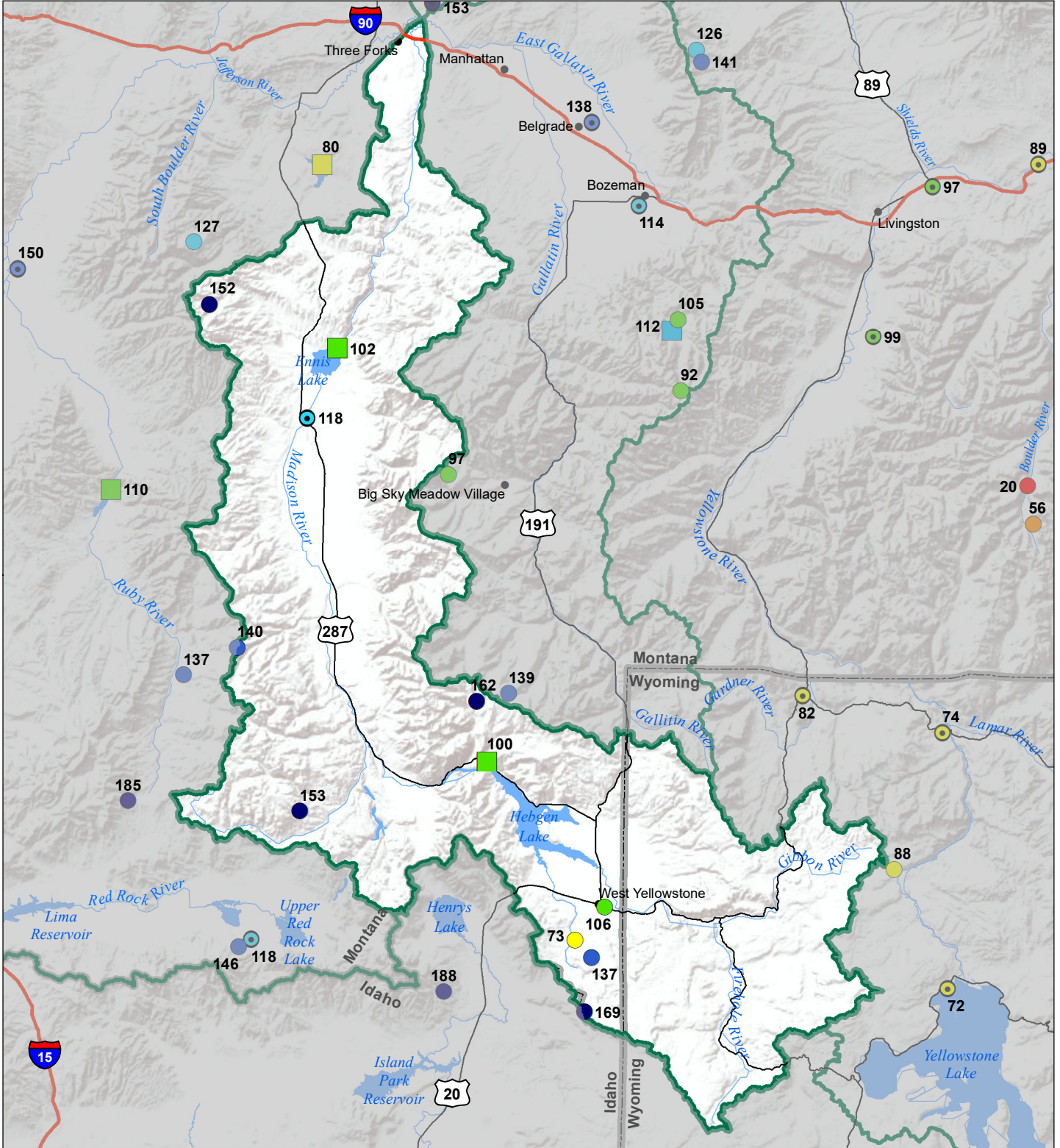
- > 150%
- 131 - 150%
- 111 - 130%
- 91 - 110%
- 71 - 90%
- 51 - 70%
- 1 - 50%

Reservoirs Percent of Normal

- > 150%
- 131 - 150%
- 111 - 130%
- 91 - 110%
- 71 - 90%
- 51 - 70%
- 1 - 50%



Madison River Basin Monthly Precipitation and Reservoir Levels Percentage of Normal July 1, 2020 (June 1, 2020 - July 1, 2020)



Precipitation Percent of Normal

SNOTEL

- > 150%
- 131 - 150%
- 111 - 130%
- 91 - 110%
- 71 - 90%
- 51 - 70%
- 1 - 50%

COOP/ACIS

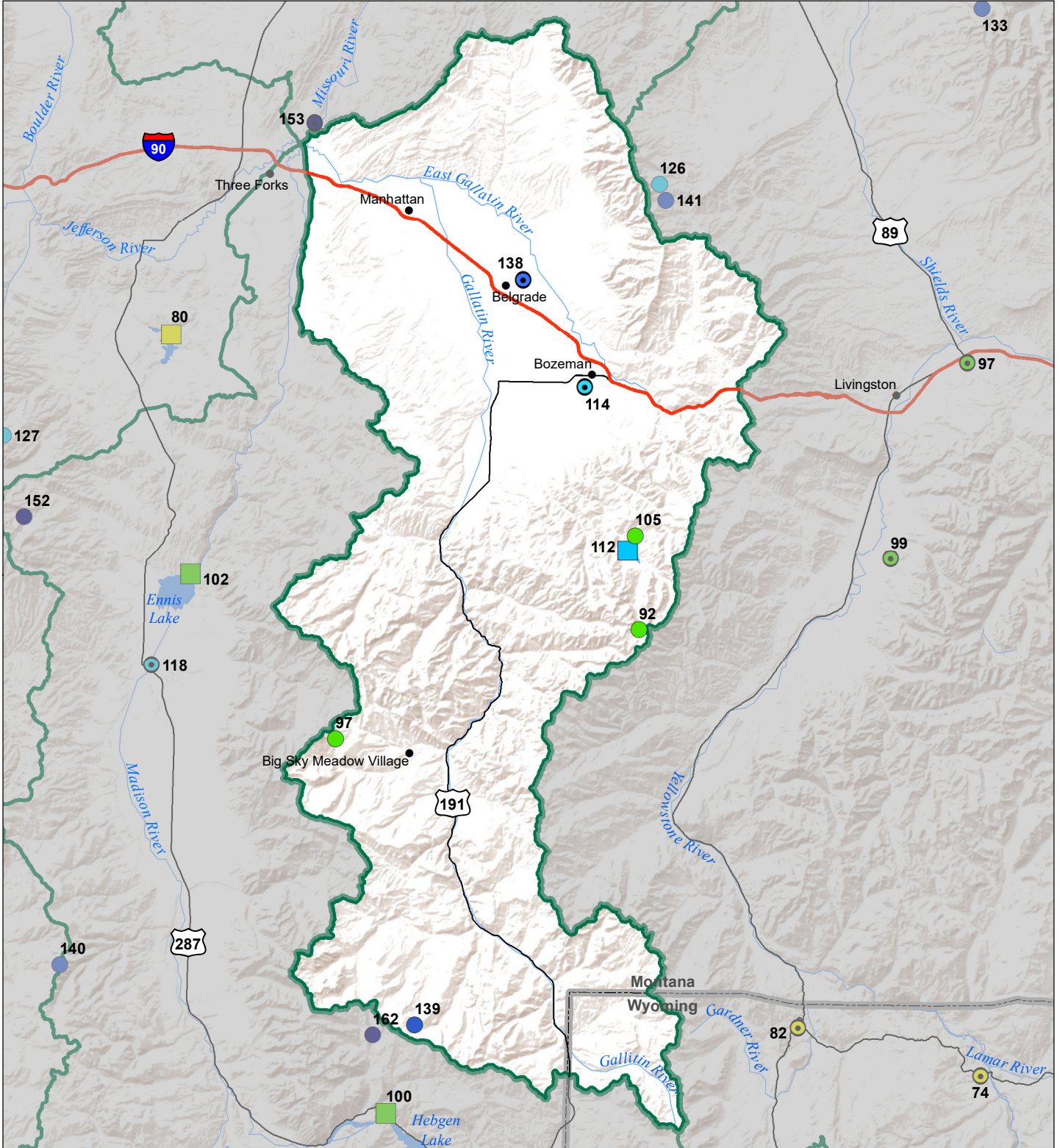
- > 150%
- 131 - 150%
- 111 - 130%
- 91 - 110%
- 71 - 90%
- 51 - 70%
- 1 - 50%

Reservoirs Percent of Normal

- > 150%
- 131 - 150%
- 111 - 130%
- 91 - 110%
- 71 - 90%
- 51 - 70%
- 1 - 50%



Gallatin River Basin Monthly Precipitation and Reservoir Levels Percentage of Normal July 1, 2020 (June 1, 2020 - July 1, 2020)



Precipitation Percent of Normal

SNOTEL

- > 150%
- 131 - 150%
- 111 - 130%
- 91 - 110%
- 71 - 90%
- 51 - 70%
- 1 - 50%

COOP/ACIS

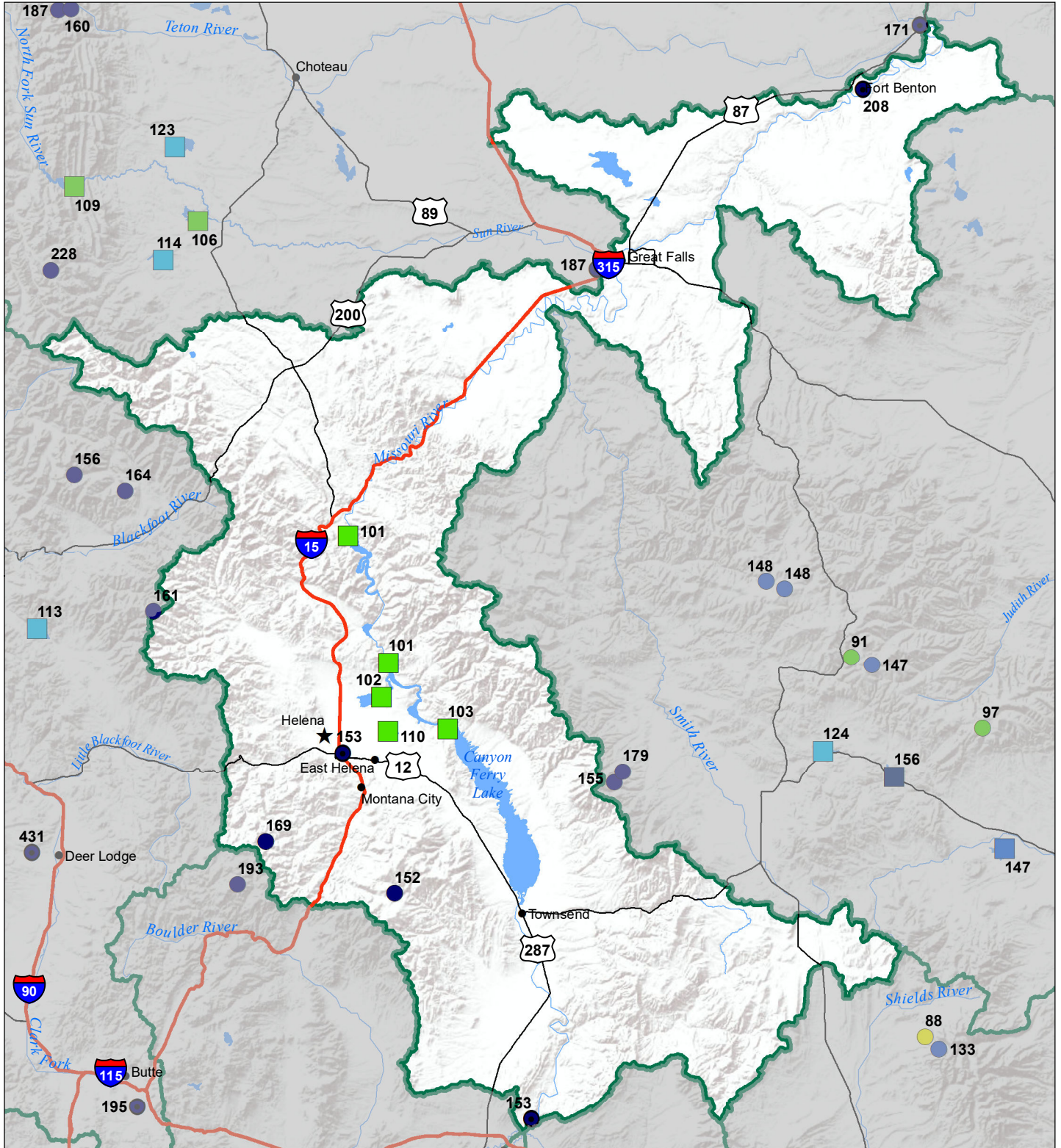
- > 150%
- 131 - 150%
- 111 - 130%
- 91 - 110%
- 71 - 90%
- 51 - 70%
- 1 - 50%

Reservoirs Percent of Normal

- > 150%
- 131 - 150%
- 111 - 130%
- 91 - 110%
- 71 - 90%
- 51 - 70%
- 1 - 50%



Headwaters Mainstem (Missouri) River Basin Monthly Precipitation and Reservoir Levels Percentage of Normal July 1, 2020 (June 1, 2020 - July 1, 2020)



Precipitation Percent of Normal

SNOTEL

- > 150%
- 131 - 150%
- 111 - 130%
- 91 - 110%
- 71 - 90%
- 51 - 70%
- 1 - 50%

COOP/ACIS

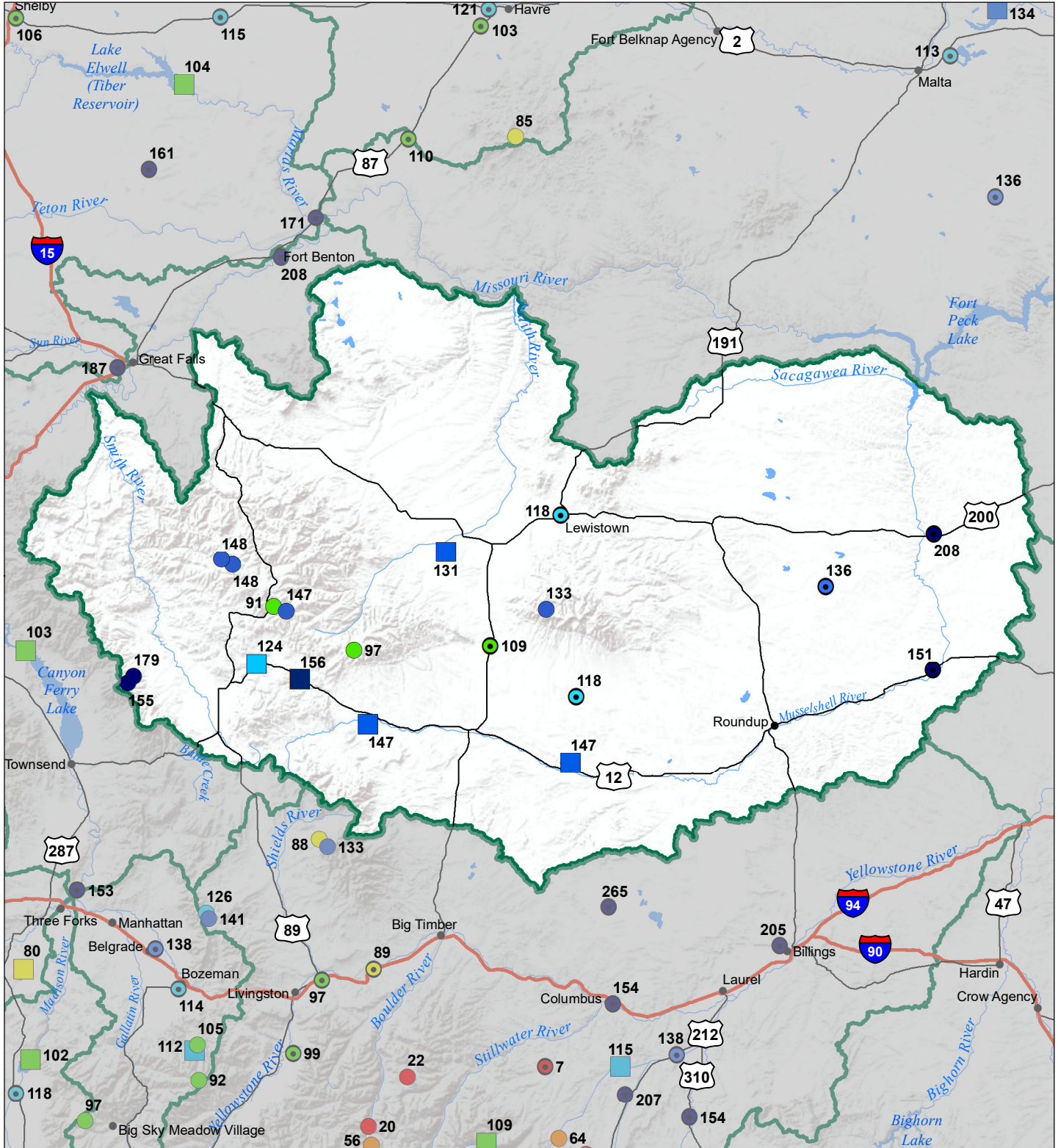
- > 150%
- 131 - 150%
- 111 - 130%
- 91 - 110%
- 71 - 90%
- 51 - 70%
- 1 - 50%

Reservoirs Percent of Normal

- > 150%
- 131 - 150%
- 111 - 130%
- 91 - 110%
- 71 - 90%
- 51 - 70%
- 1 - 50%



Smith-Judith-Musselshell River Basin Monthly Precipitation and Reservoir Levels Percentage of Normal July 1, 2020 (June 1, 2020 - July 1, 2020)



Precipitation Percent of Normal

SNOTEL

- > 150%
- 131 - 150%
- 111 - 130%
- 91 - 110%
- 71 - 90%
- 51 - 70%
- 1 - 50%

COOP/ACIS

- > 150%
- 131 - 150%
- 111 - 130%
- 91 - 110%
- 71 - 90%
- 51 - 70%
- 1 - 50%

Reservoirs Percent of Normal

- > 150%
- 131 - 150%
- 111 - 130%
- 91 - 110%
- 71 - 90%
- 51 - 70%
- 1 - 50%

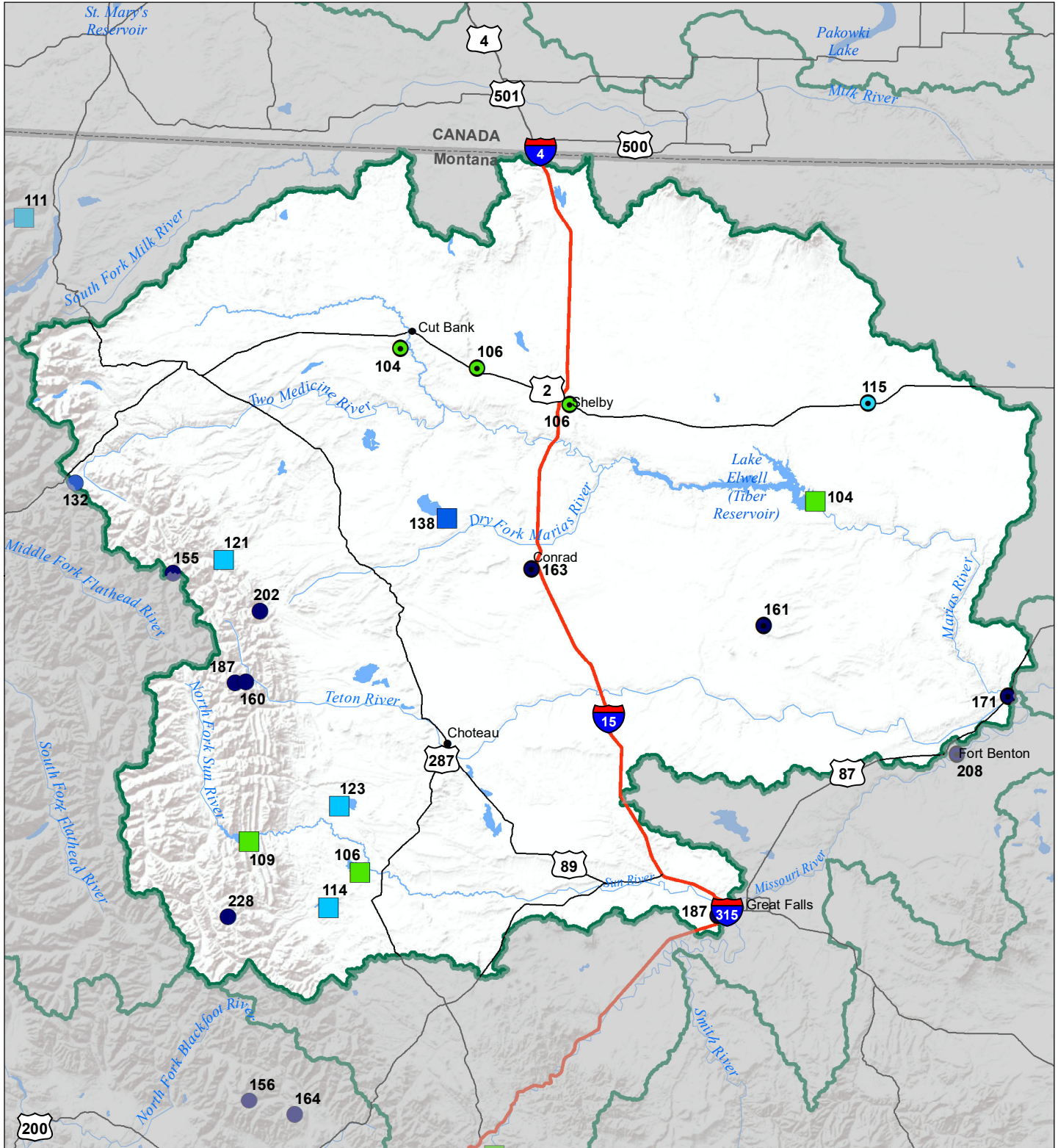


Sun-Teton-Marias River Basin

Monthly Precipitation and Reservoir Levels

Percentage of Normal

July 1, 2020 (June 1, 2020 - July 1, 2020)



Precipitation Percent of Normal

SNOTEL

- > 150%
- 131 - 150%
- 111 - 130%
- 91 - 110%
- 71 - 90%
- 51 - 70%
- 1 - 50%

COOP/ACIS

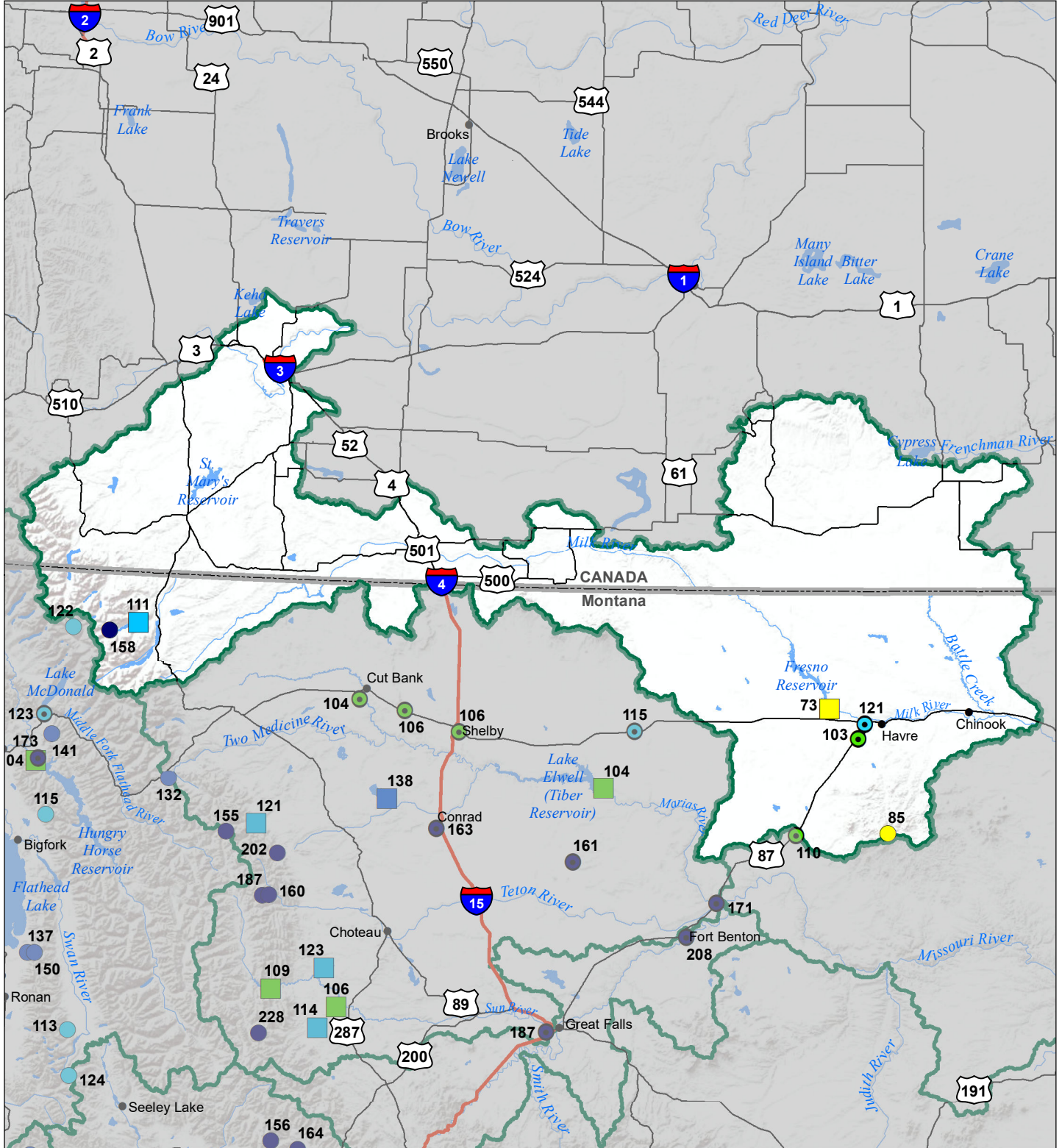
- > 150%
- 131 - 150%
- 111 - 130%
- 91 - 110%
- 71 - 90%
- 51 - 70%
- 1 - 50%

Reservoirs Percent of Normal

- > 150%
- 131 - 150%
- 111 - 130%
- 91 - 110%
- 71 - 90%
- 51 - 70%
- 1 - 50%



St Mary's-Milk River Basin Monthly Precipitation and Reservoir Levels Percentage of Normal July 1, 2020 (June 1, 2020 - July 1, 2020)



Precipitation Percent of Normal

SNOTEL

- > 150%
- 131 - 150%
- 111 - 130%
- 91 - 110%
- 71 - 90%
- 51 - 70%
- 1 - 50%

COOP/ACIS

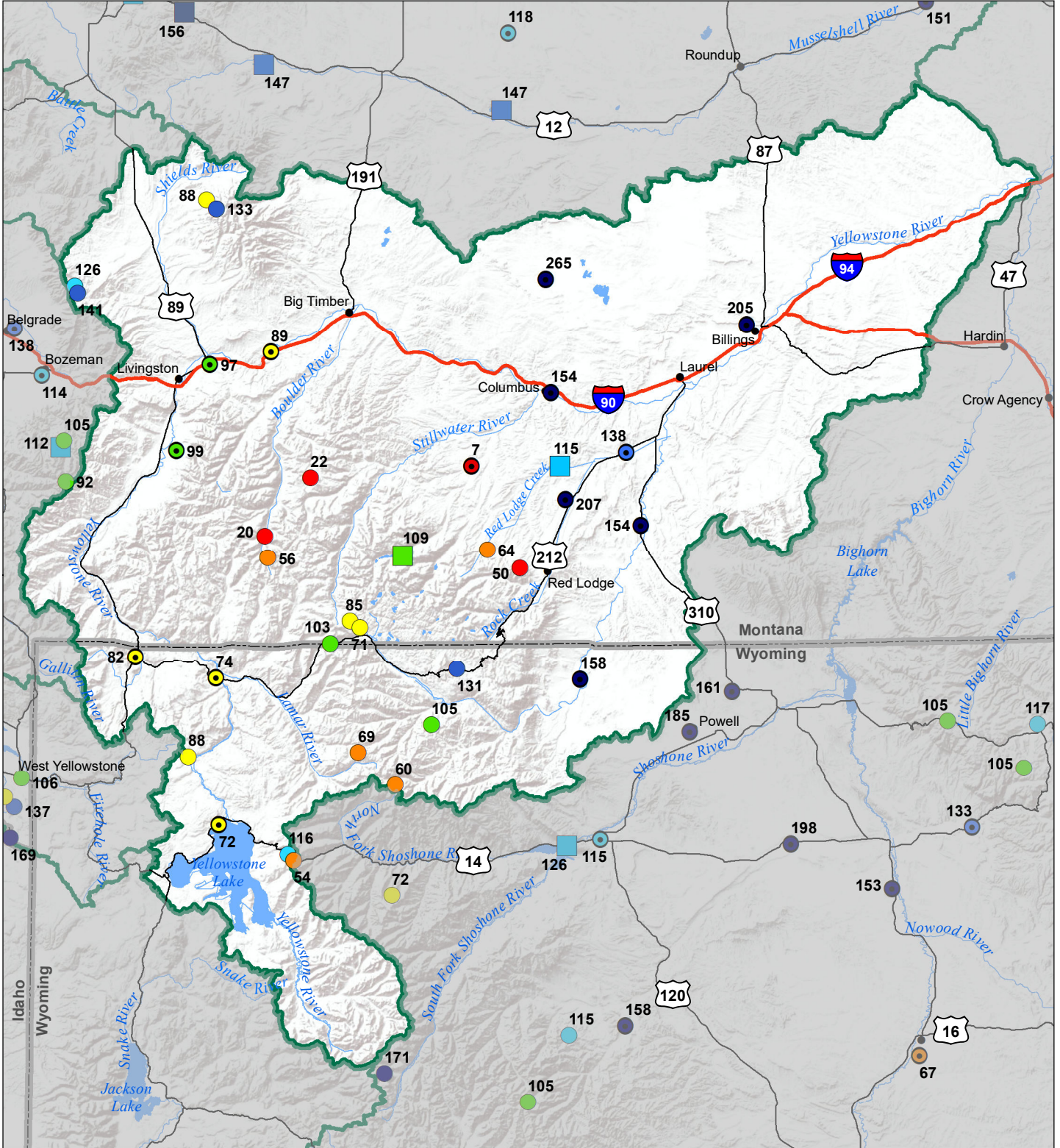
- > 150%
- 131 - 150%
- 111 - 130%
- 91 - 110%
- 71 - 90%
- 51 - 70%
- 1 - 50%

Reservoirs Percent of Normal

- > 150%
- 131 - 150%
- 111 - 130%
- 91 - 110%
- 71 - 90%
- 51 - 70%
- 1 - 50%



Upper Yellowstone River Basin Monthly Precipitation and Reservoir Levels Percentage of Normal July 1, 2020 (June 1, 2020 - July 1, 2020)



Precipitation Percent of Normal

SNOTEL

- > 150%
- 131 - 150%
- 111 - 130%
- 91 - 110%

COOP/ACIS

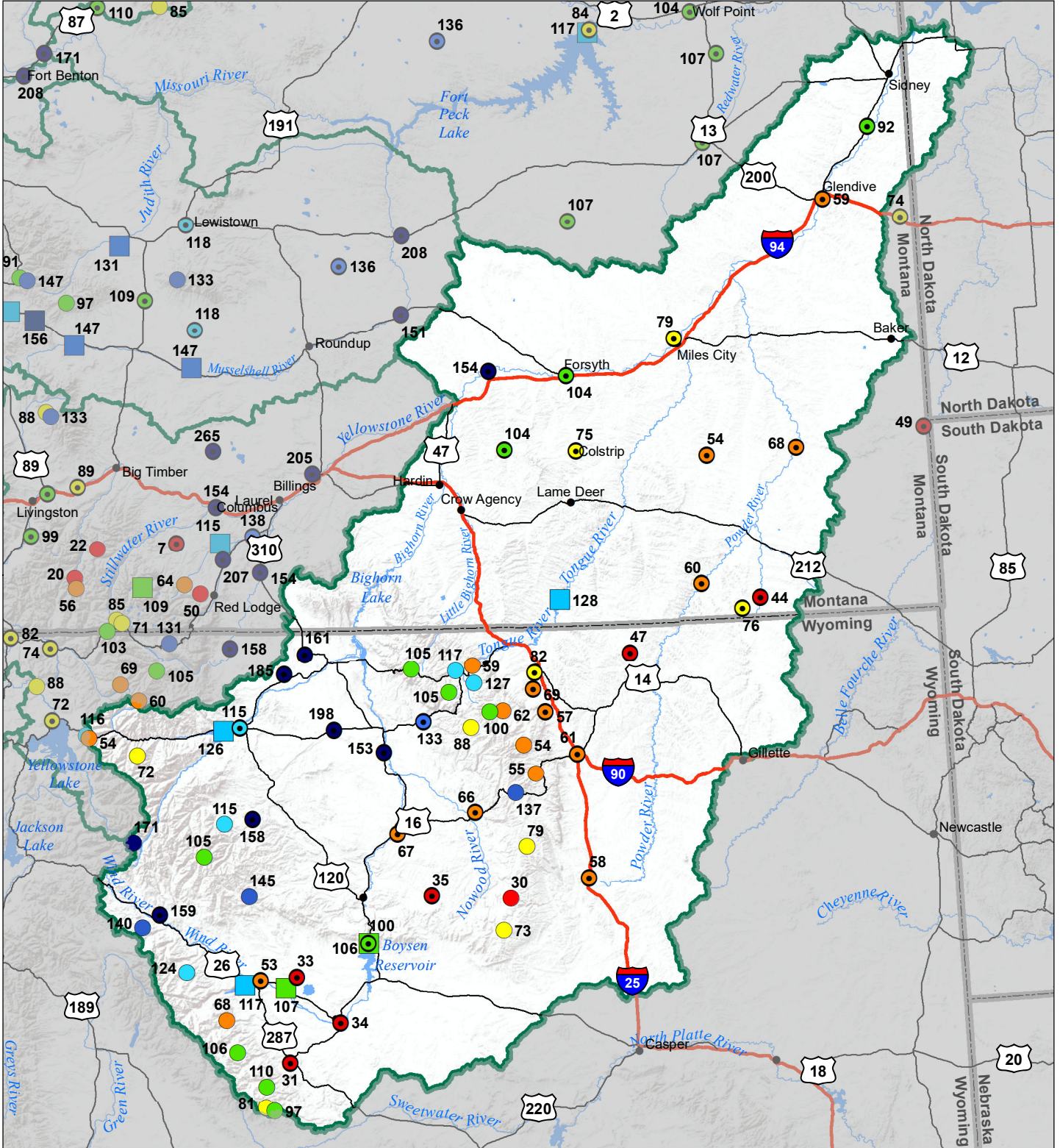
- > 150%
- 131 - 150%
- 111 - 130%
- 91 - 110%
- 71 - 90%
- 51 - 70%
- 1 - 50%

Reservoirs Percent of Normal

- > 150%
- 131 - 150%
- 111 - 130%
- 91 - 110%
- 71 - 90%
- 51 - 70%
- 51 - 70%
- 1 - 50%



Lower Yellowstone River Basin Monthly Precipitation and Reservoir Levels Percentage of Normal July 1, 2020 (June 1, 2020 - July 1, 2020)



Precipitation Percent of Normal

SNOTEL

- > 150%
- 131 - 150%
- 111 - 130%
- 91 - 110%
- 71 - 90%
- 51 - 70%
- 1 - 50%

COOP/ACIS

- > 150%
- 131 - 150%
- 111 - 130%
- 91 - 110%
- 71 - 90%
- 51 - 70%
- 1 - 50%

Reservoirs Percent of Normal

- > 150%
- 131 - 150%
- 111 - 130%
- 91 - 110%
- 71 - 90%
- 51 - 70%
- 1 - 50%

