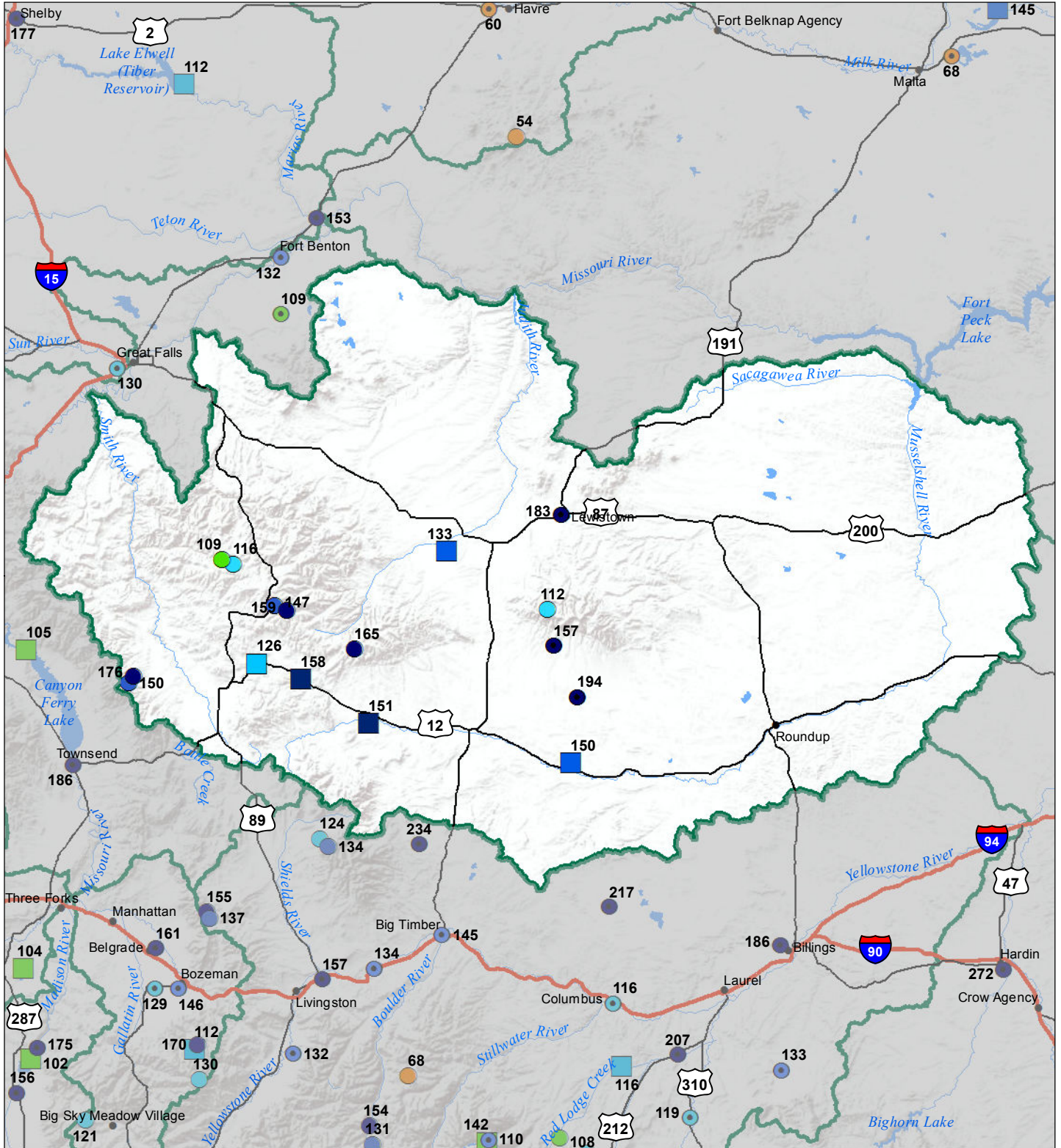


# Smith-Judith-Musselshell River Basin Monthly Precipitation and Reservoir Levels Percentage of Normal July 1, 2018 (June 1, 2018 - July 1, 2018)



### Precipitation Percent of Normal

- | SNOTEL   |  | COOP/ACIS                                      |  |
|--|--|--|--|
| <span style="color: blue;">●</span> > 150%     | <span style="color: yellow;">●</span> 71 - 90% | <span style="color: blue;">●</span> > 150%     | <span style="color: yellow;">●</span> 71 - 90% |
| <span style="color: blue;">●</span> 131 - 150% | <span style="color: orange;">●</span> 51 - 70% | <span style="color: blue;">●</span> 131 - 150% | <span style="color: orange;">●</span> 51 - 70% |
| <span style="color: cyan;">●</span> 111 - 130% | <span style="color: red;">●</span> 1 - 50%     | <span style="color: cyan;">●</span> 111 - 130% | <span style="color: red;">●</span> 1 - 50%     |
| <span style="color: green;">●</span> 91 - 110% |  | <span style="color: green;">●</span> 91 - 110% |  |

### Reservoirs Percent of Normal

- > 150%
- 131 - 150%
- 111 - 130%
- 91 - 110%
- 71 - 90%
- 51 - 70%
- 1 - 50%

