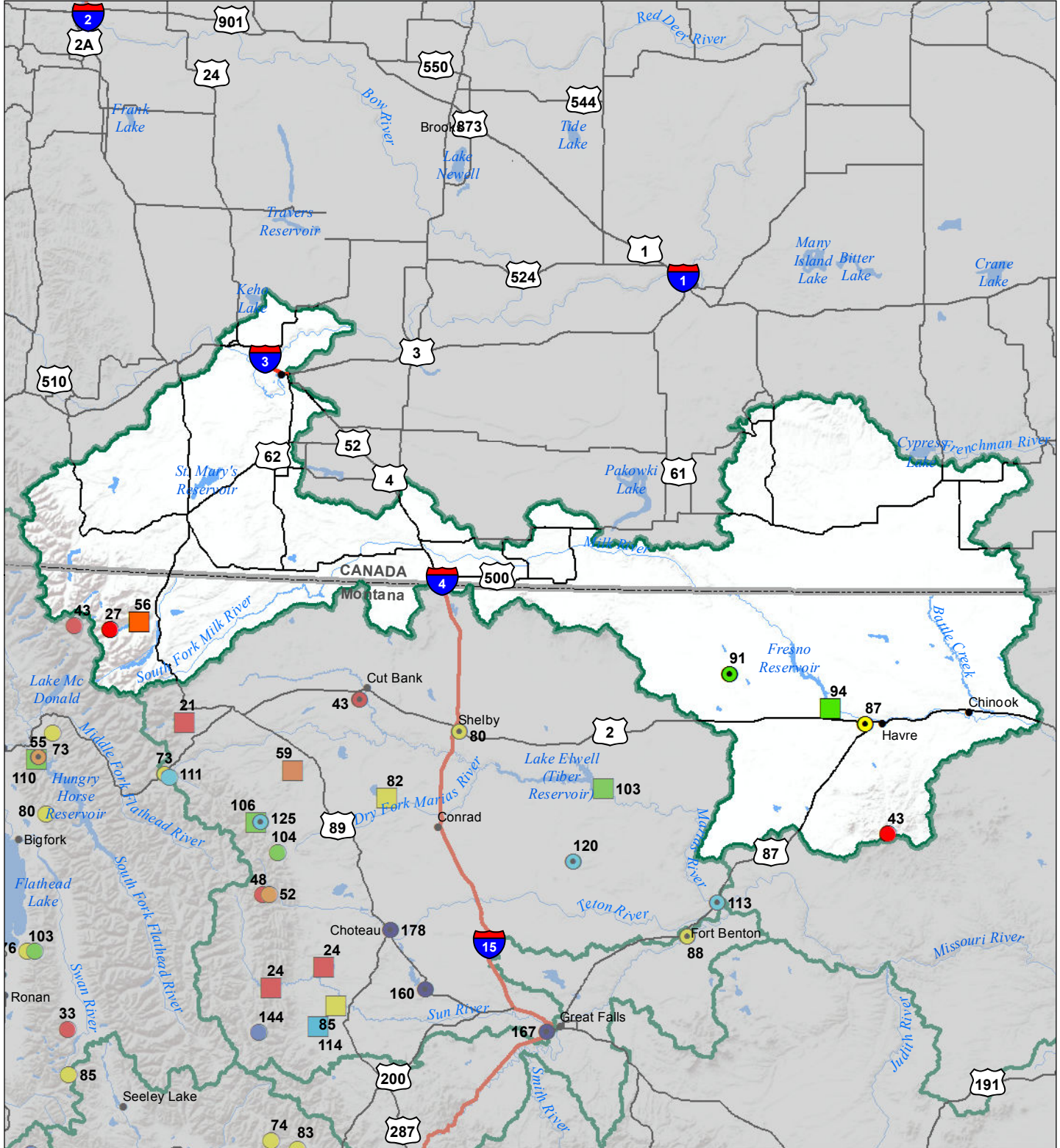


St Mary's-Milk River Basin
Monthly Precipitation and Reservoir Levels
Percentage of Normal
October 1, 2017 (September 1, 2017 - October 1, 2017)



**Precipitation
Percent of Normal**

SNOTEL

- > 150%
- 131 - 150%
- 111 - 130%
- 91 - 110%
- 71 - 90%
- 51 - 70%
- 1 - 50%

COOP/ACIS

- > 150%
- 131 - 150%
- 111 - 130%
- 91 - 110%
- 71 - 90%
- 51 - 70%
- 1 - 50%

**Reservoirs
Percent of Normal**

- > 150%
- 131 - 150%
- 111 - 130%
- 91 - 110%
- 71 - 90%
- 51 - 70%
- 1 - 50%

