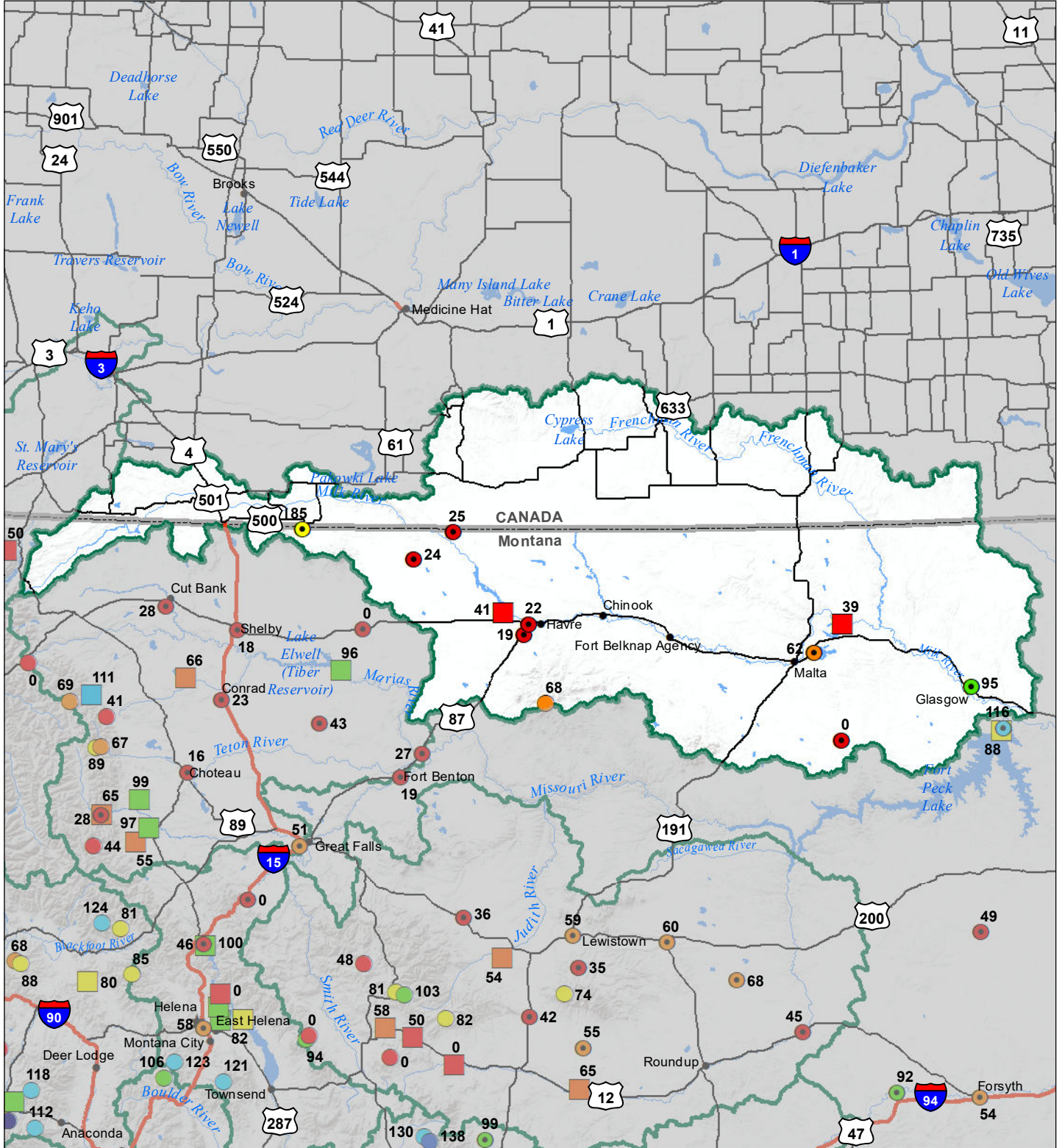


# Milk River Basin

## Monthly Precipitation and Reservoir Levels

### Percentage of Normal

#### June 1, 2022 (May 1, 2022 - June 1, 2022)



### Precipitation Percent of Normal

#### SNOTEL

- > 150%
- 131 - 150%
- 111 - 130%
- 91 - 110%
- 71 - 90%
- 51 - 70%
- 1 - 50%

#### COOP/ACIS

- > 150%
- 131 - 150%
- 111 - 130%
- 91 - 110%
- 71 - 90%
- 51 - 70%
- 1 - 50%

### Reservoirs Percent of Normal

- > 150%
- 131 - 150%
- 111 - 130%
- 91 - 110%
- 71 - 90%
- 51 - 70%
- 1 - 50%



Montana State Library  
Natural Resource  
Information System

Data source: USDA NRCS National Water and Climate Center, Air and Water Database