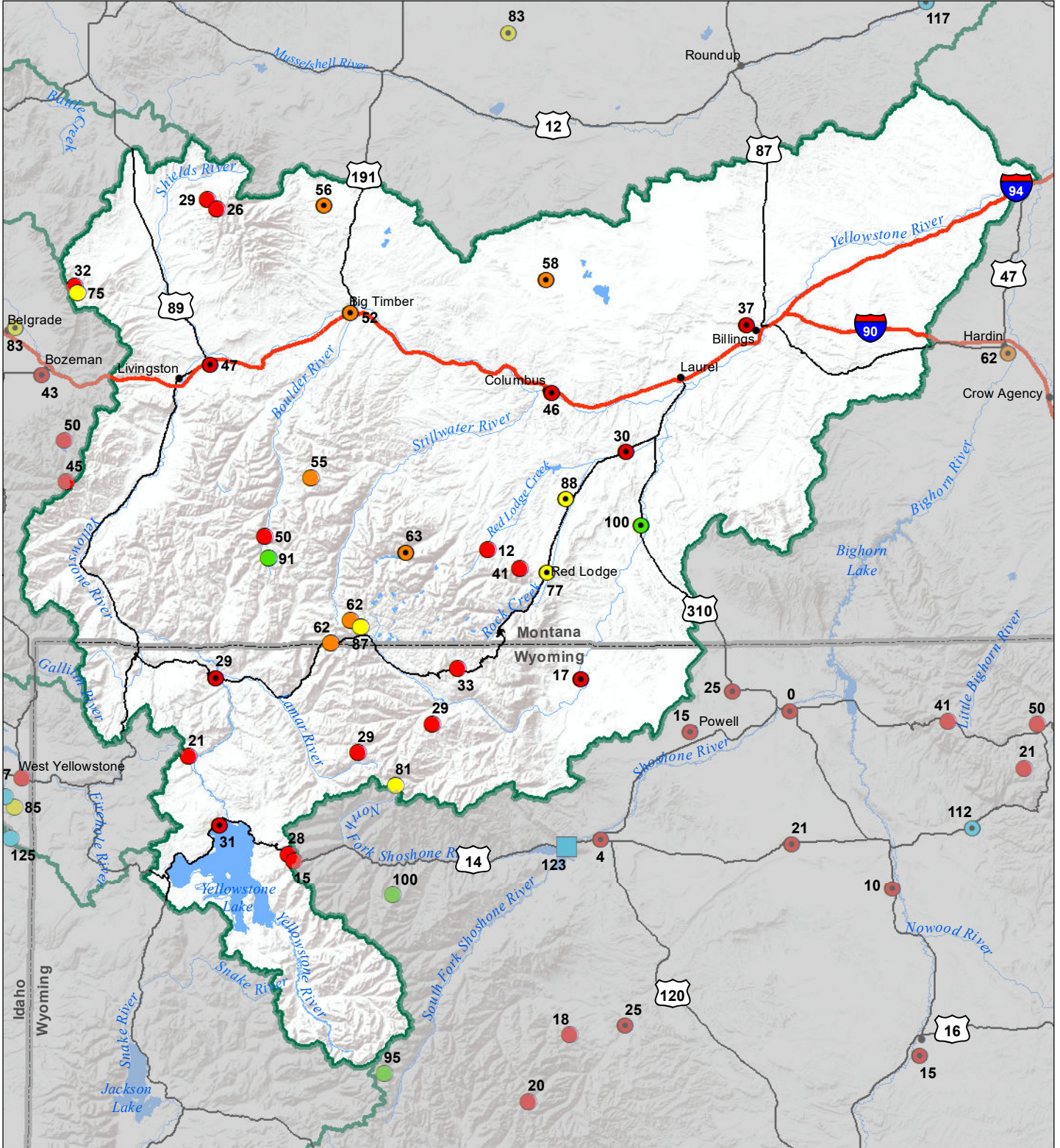


Upper Yellowstone River Basin Monthly Precipitation and Reservoir Levels Percentage of Normal August 1, 2020 (July 1, 2020 - August 1, 2020)



Precipitation Percent of Normal

SNOTEL

- > 150%
- 131 - 150%
- 111 - 130%
- 91 - 110%

COOP/ACIS

- > 150%
- 131 - 150%
- 111 - 130%
- 91 - 110%

Reservoirs Percent of Normal

- > 150%
- 131 - 150%
- 111 - 130%
- 91 - 110%
- 71 - 90%
- 51 - 70%
- 31 - 50%
- 1 - 30%

