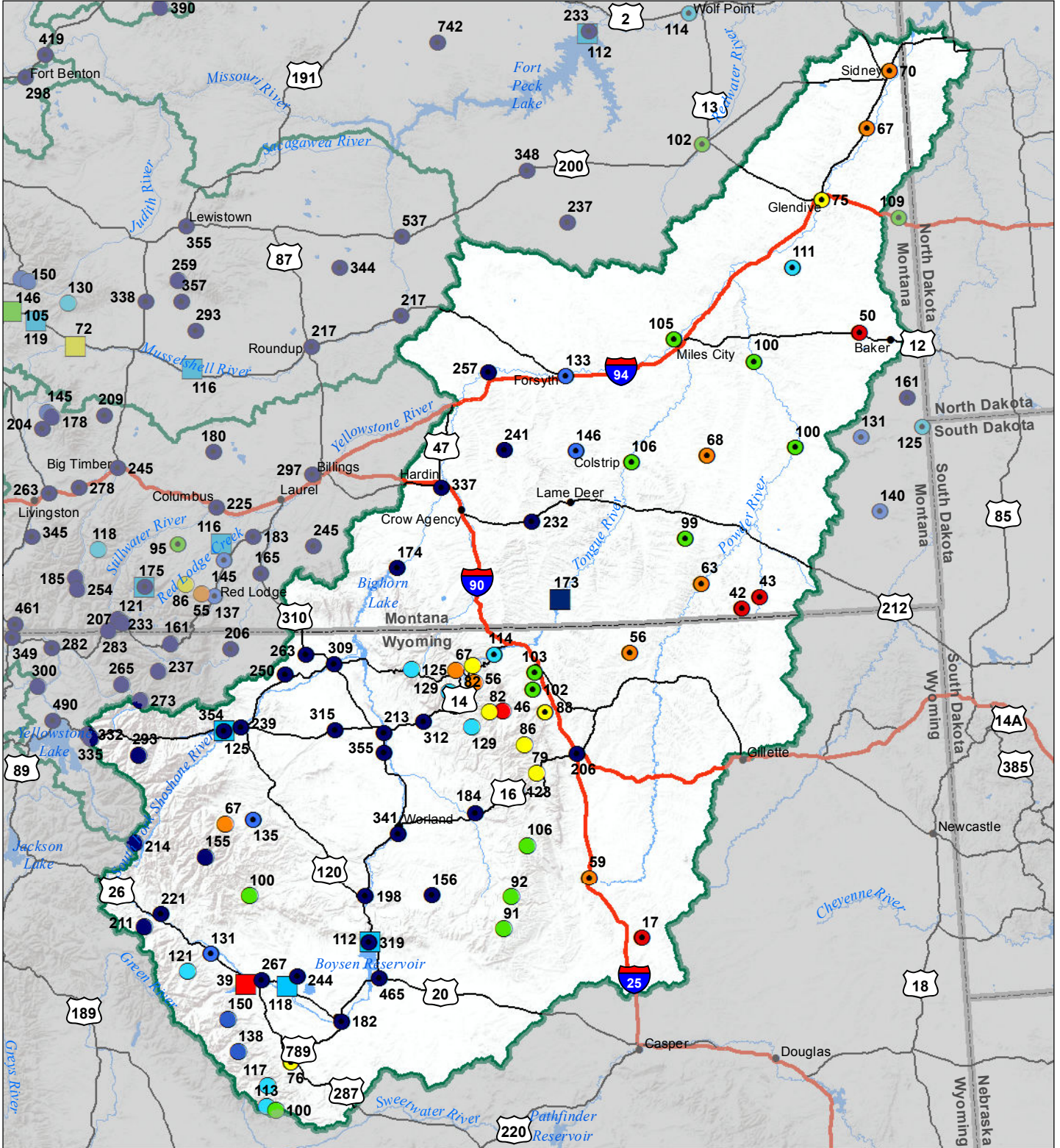


**Lower Yellowstone River Basin
 Monthly Precipitation and Reservoir Levels
 Percentage of Normal
 November 1, 2016 (October 1, 2016 - November 1, 2016)**



**Precipitation
 Percent of Normal**

- | | |
|--|--|
| SNOTEL | COOP/ACIS |
| <ul style="list-style-type: none"> ● > 150% ● 131 - 150% ● 111 - 130% ● 91 - 110% | <ul style="list-style-type: none"> ● > 150% ● 131 - 150% ● 111 - 130% ● 91 - 110% |
| <ul style="list-style-type: none"> ● 71 - 90% ● 51 - 70% ● 1 - 50% | <ul style="list-style-type: none"> ● 71 - 90% ● 51 - 70% ● 1 - 50% |

**Reservoirs
 Percent of Normal**

- > 150%
- 131 - 150%
- 111 - 130%
- 91 - 110%
- 71 - 90%
- 51 - 70%
- 1 - 50%

