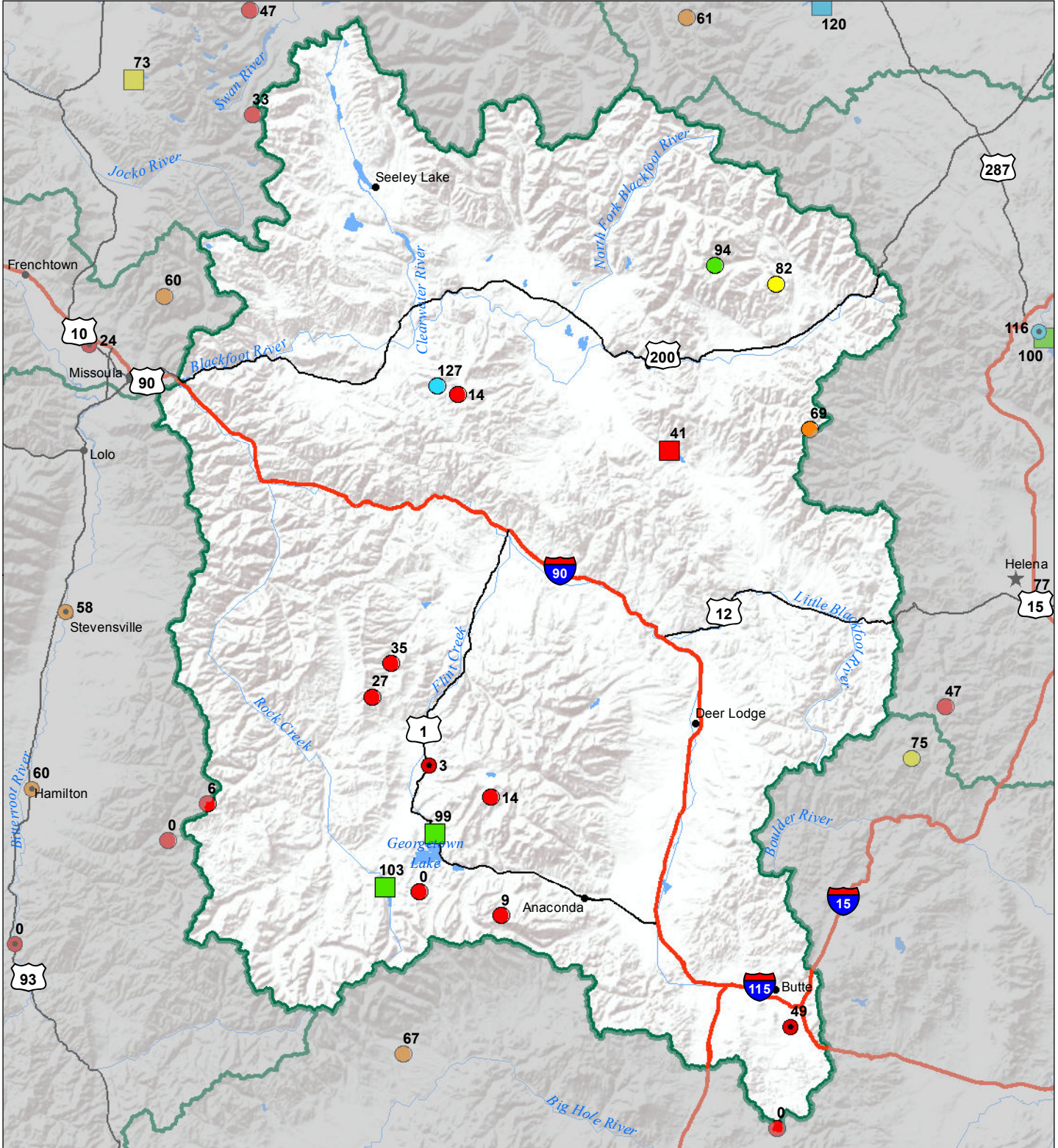


# Upper Clark Fork River Basin Monthly Precipitation and Reservoir Levels Percentage of Normal September 1, 2016 (August 1, 2016 - September 1, 2016)



### Precipitation Percent of Normal

#### SNOTEL

- > 150%
- 71 - 90%
- 51 - 70%
- 1 - 50%
- 111 - 130%
- 91 - 110%

#### COOP/ACIS

- > 150%
- 71 - 90%
- 51 - 70%
- 1 - 50%
- 111 - 130%
- 91 - 110%

### Reservoirs Percent of Normal

- > 150%
- 131 - 150%
- 111 - 130%
- 91 - 110%
- 71 - 90%
- 51 - 70%
- 1 - 50%

