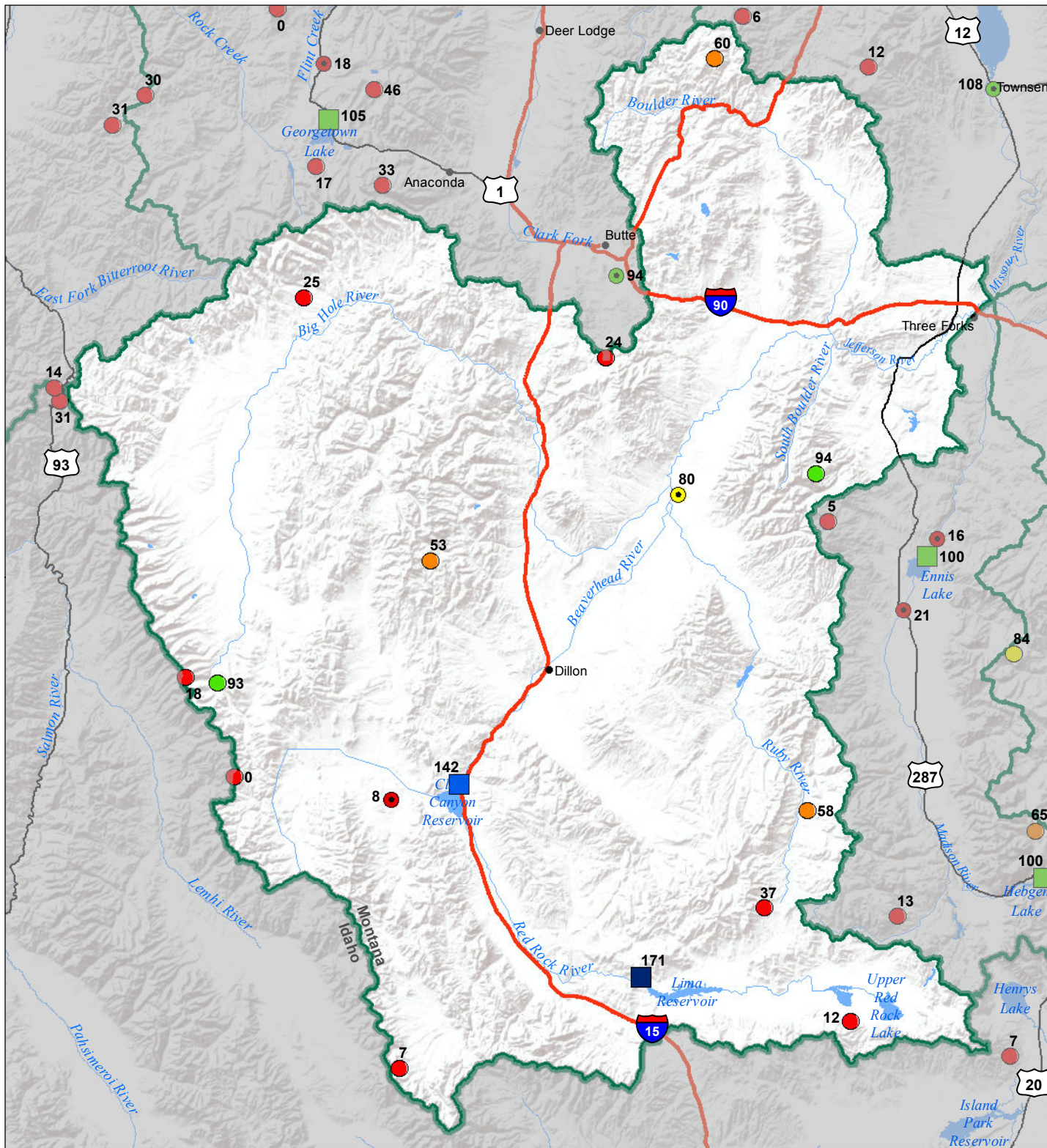


# Jefferson River Basin

## Monthly Precipitation and Reservoir Levels

### Percentage of Normal

October 1, 2018 (September 1, 2018 - October 1, 2018)



#### Precipitation Percent of Normal

##### SNOTEL

- > 150%
- 131 - 150%
- 111 - 130%
- 91 - 110%
- 71 - 90%
- 51 - 70%
- 1 - 50%

##### COOP/ACIS

- > 150%
- 131 - 150%
- 111 - 130%
- 91 - 110%
- 71 - 90%
- 51 - 70%
- 1 - 50%

#### Reservoirs Percent of Normal

- > 150%
- 131 - 150%
- 111 - 130%
- 91 - 110%
- 71 - 90%
- 51 - 70%
- 1 - 50%

