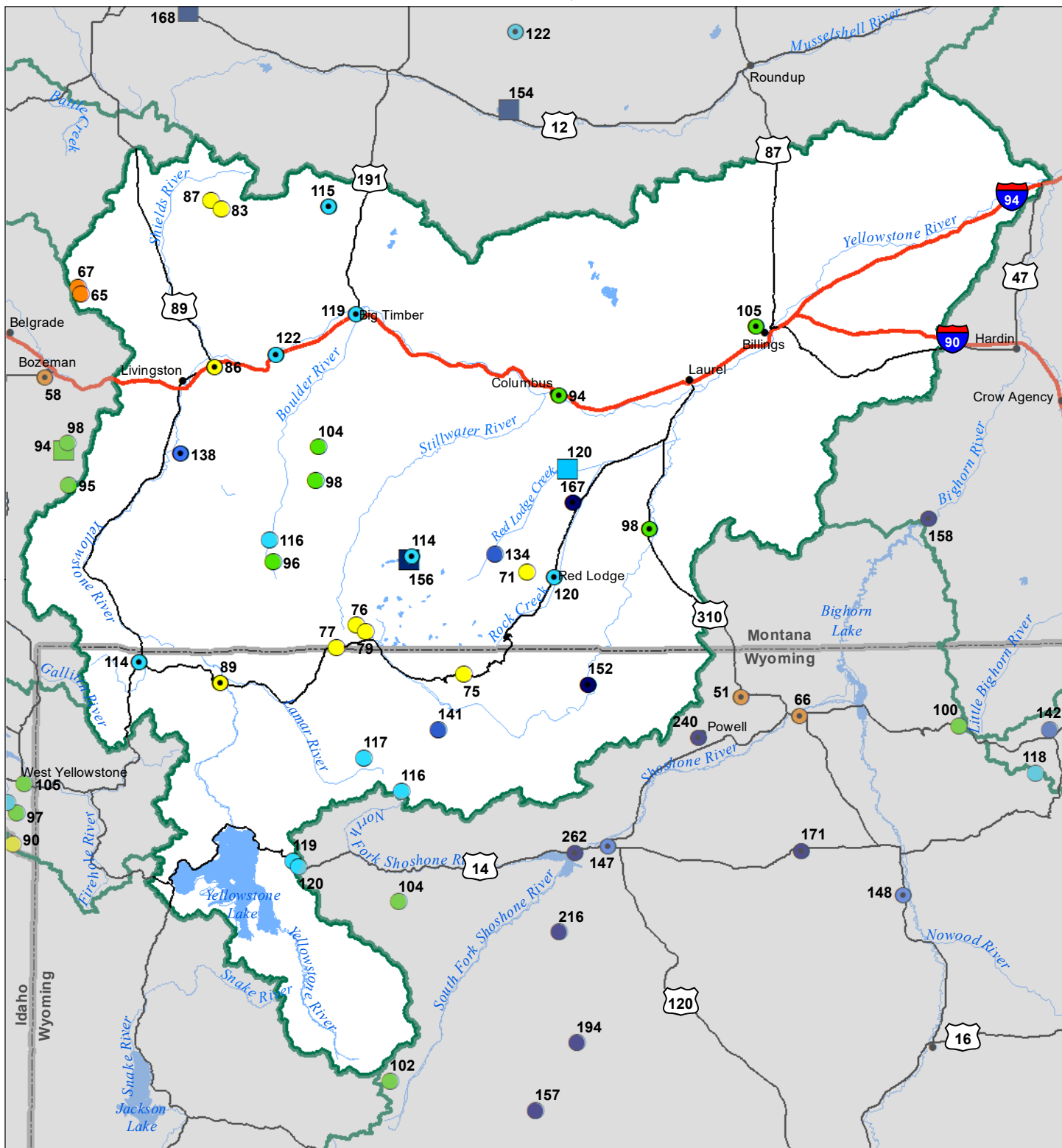


# Upper Yellowstone River Basin Water Year to Date Precipitation and Reservoir Levels Percentage of Normal December 1, 2023



### Precipitation Percent of Normal

| SNOTEL  |  | COOP/ACIS   |  |
|---|--|---|--|
| <span style="color: blue;">●</span> > 150%          | <span style="color: yellow;">●</span> 71 - 90% | <span style="color: blue;">●</span> > 150%          | <span style="color: yellow;">●</span> 71 - 90% |
| <span style="color: lightblue;">●</span> 131 - 150% | <span style="color: orange;">●</span> 51 - 70% | <span style="color: lightblue;">●</span> 131 - 150% | <span style="color: orange;">●</span> 51 - 70% |
| <span style="color: cyan;">●</span> 111 - 130%      | <span style="color: red;">●</span> 1 - 50%     | <span style="color: cyan;">●</span> 111 - 130%      | <span style="color: red;">●</span> 1 - 50%     |
| <span style="color: green;">●</span> 91 - 110%      |  | <span style="color: green;">●</span> 91 - 110%      |  |

### Reservoirs Percent of Normal

|   |
|---|
| <span style="color: darkblue;">■</span> > 150%      |
| <span style="color: blue;">■</span> 131 - 150%      |
| <span style="color: lightblue;">■</span> 111 - 130% |
| <span style="color: green;">■</span> 91 - 110%      |
| <span style="color: yellow;">■</span> 71 - 90%      |
| <span style="color: orange;">■</span> 51 - 70%      |
| <span style="color: red;">■</span> 1 - 50%          |

