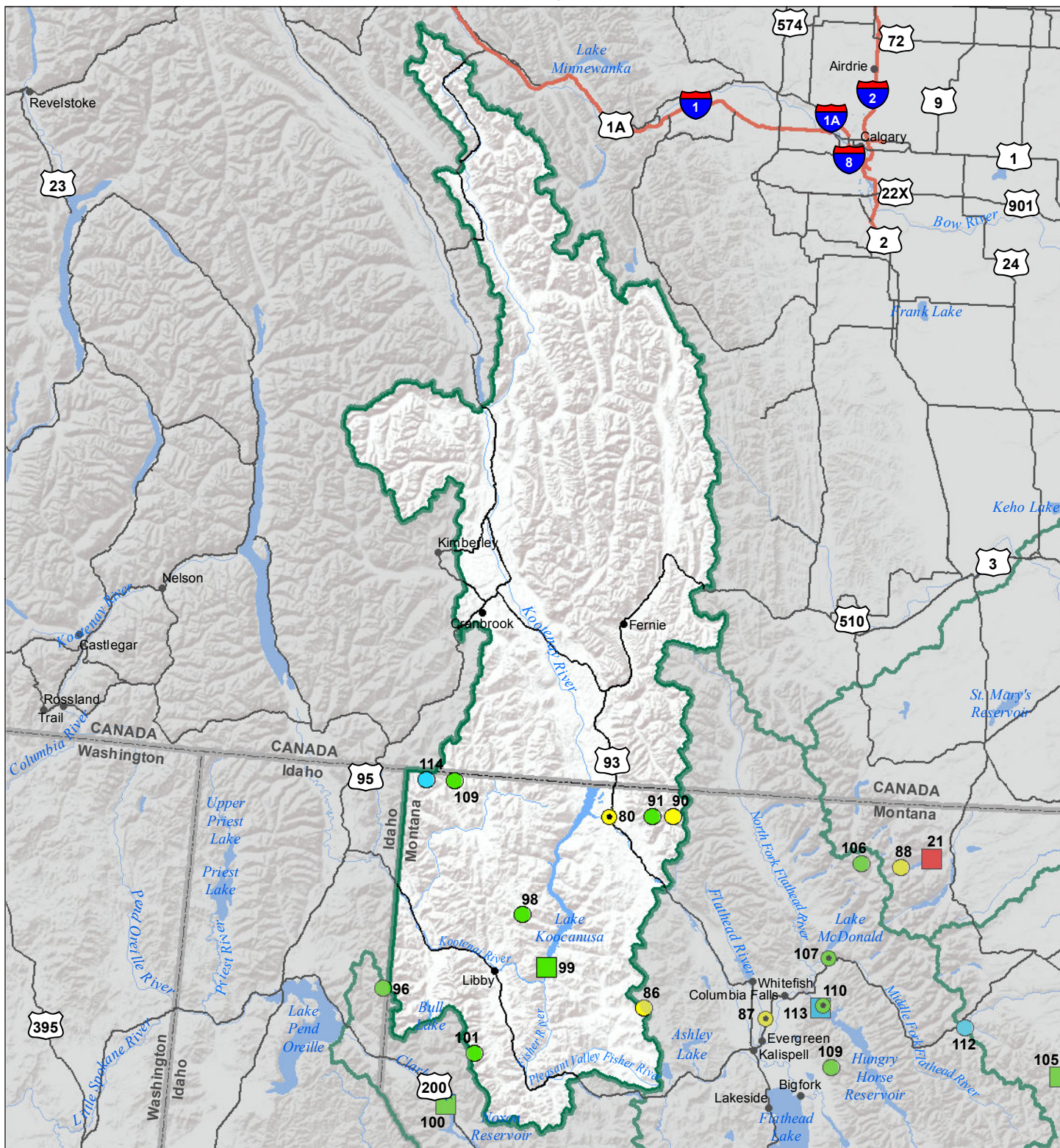


# Kootenai River Basin Water Year to Date Precipitation and Reservoir Levels Percentage of Normal October 1, 2018



Precipitation Percent of Normal			
SNOTEL		COOP/ACIS	
<span style="color: blue;">●</span> > 150%	<span style="color: yellow;">●</span> 71 - 90%	<span style="color: blue;">●</span> > 150%	<span style="color: yellow;">●</span> 71 - 90%
<span style="color: lightblue;">●</span> 131 - 150%	<span style="color: orange;">●</span> 51 - 70%	<span style="color: lightblue;">●</span> 131 - 150%	<span style="color: orange;">●</span> 51 - 70%
<span style="color: cyan;">●</span> 111 - 130%	<span style="color: red;">●</span> 1 - 50%	<span style="color: cyan;">●</span> 111 - 130%	<span style="color: red;">●</span> 1 - 50%
<span style="color: green;">●</span> 91 - 110%		<span style="color: green;">●</span> 91 - 110%	

Reservoirs Percent of Normal
<span style="background-color: darkblue; width: 15px; height: 15px; display: inline-block;"></span> > 150%
<span style="background-color: blue; width: 15px; height: 15px; display: inline-block;"></span> 131 - 150%
<span style="background-color: lightblue; width: 15px; height: 15px; display: inline-block;"></span> 111 - 130%
<span style="background-color: cyan; width: 15px; height: 15px; display: inline-block;"></span> 91 - 110%
<span style="background-color: yellow; width: 15px; height: 15px; display: inline-block;"></span> 71 - 90%
<span style="background-color: orange; width: 15px; height: 15px; display: inline-block;"></span> 51 - 70%
<span style="background-color: red; width: 15px; height: 15px; display: inline-block;"></span> 1 - 50%

