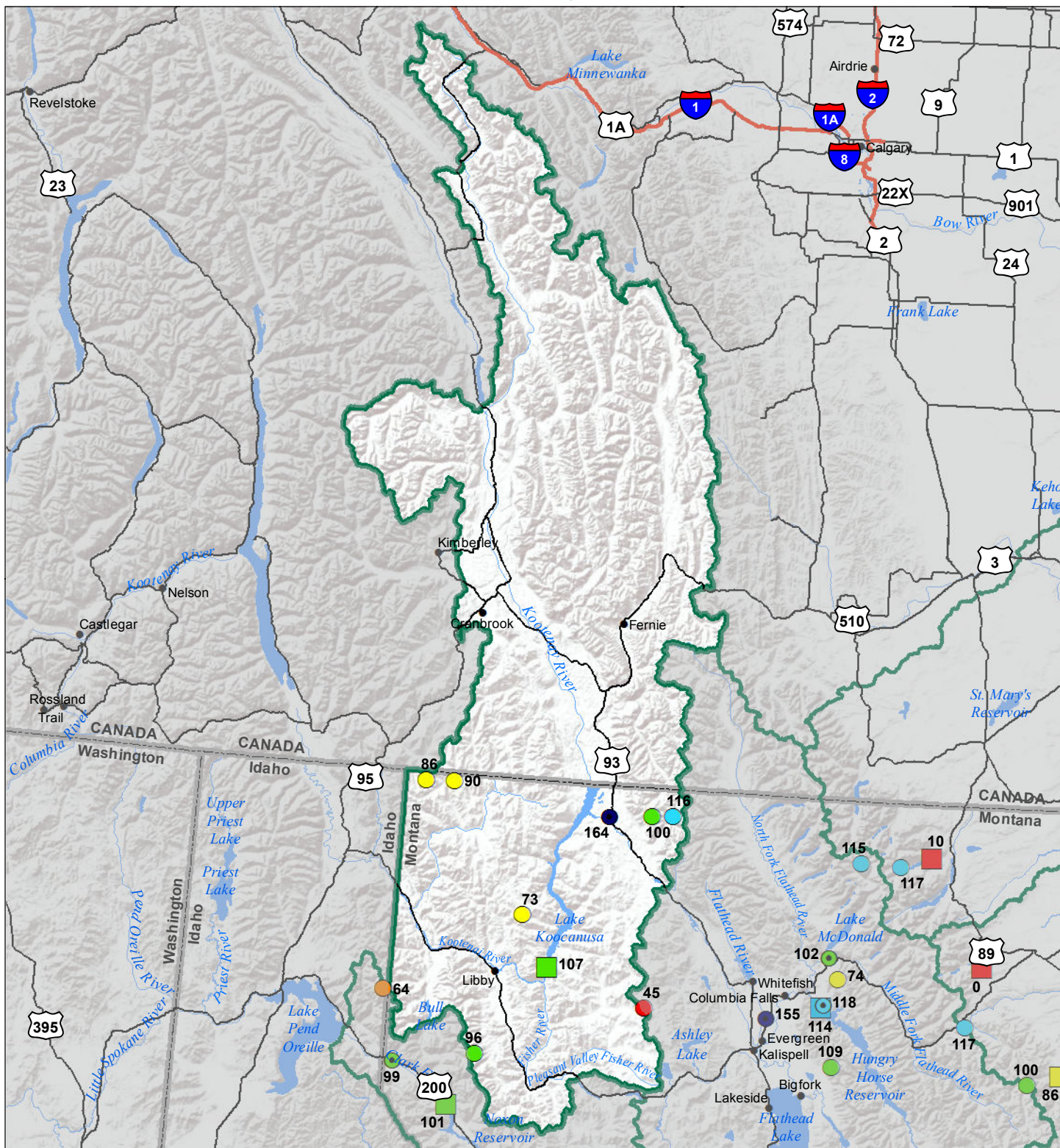


# Kootenai River Basin

## Water Year to Date Precipitation and Reservoir Levels Percentage of Normal

### November 1, 2018



Precipitation Percent of Normal	
<b>SNOTEL</b>	<b>COOP/ACIS</b>
● > 150%	● > 150%
● 131 - 150%	● 131 - 150%
● 111 - 130%	● 111 - 130%
● 91 - 110%	● 91 - 110%
● 71 - 90%	● 71 - 90%
● 51 - 70%	● 51 - 70%
● 1 - 50%	● 1 - 50%

Reservoirs Percent of Normal
■ > 150%
■ 131 - 150%
■ 111 - 130%
■ 91 - 110%
■ 71 - 90%
■ 51 - 70%
■ 1 - 50%