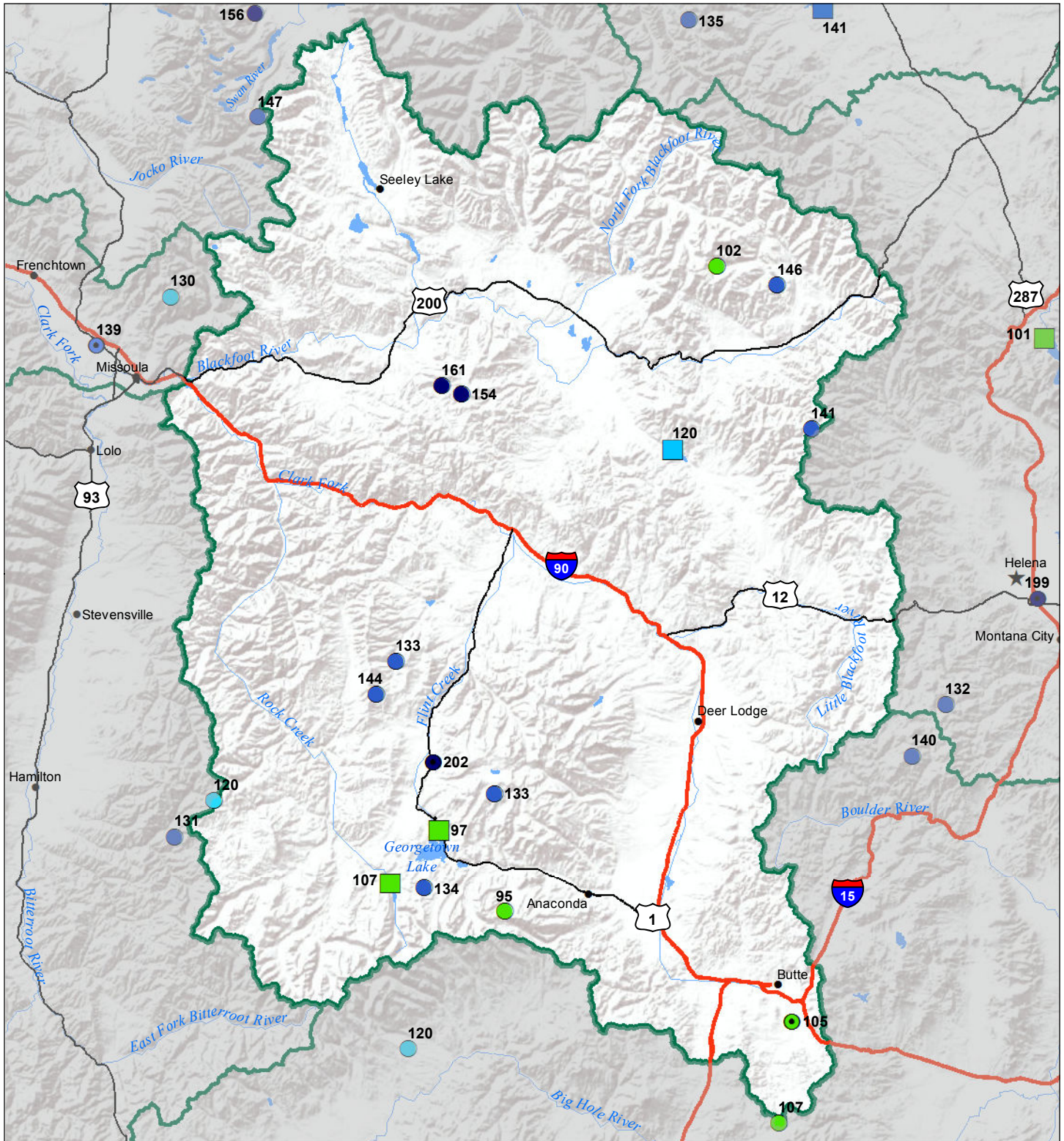


Upper Clark Fork River Basin

Water Year to Date Precipitation and Reservoir Levels

Percentage of Normal

May 1, 2018



SNOTEL		COOP/ACIS	
● > 150%	● 71 - 90%	● > 150%	● 71 - 90%
● 131 - 150%	● 51 - 70%	● 131 - 150%	● 51 - 70%
● 111 - 130%	● 1 - 50%	● 111 - 130%	● 1 - 50%
● 91 - 110%		● 91 - 110%	

Reservoirs	
Percent of Normal	
■ > 150%	■ 131 - 150%
■ 111 - 130%	■ 91 - 110%
■ 71 - 90%	■ 51 - 70%
■ 1 - 50%	

