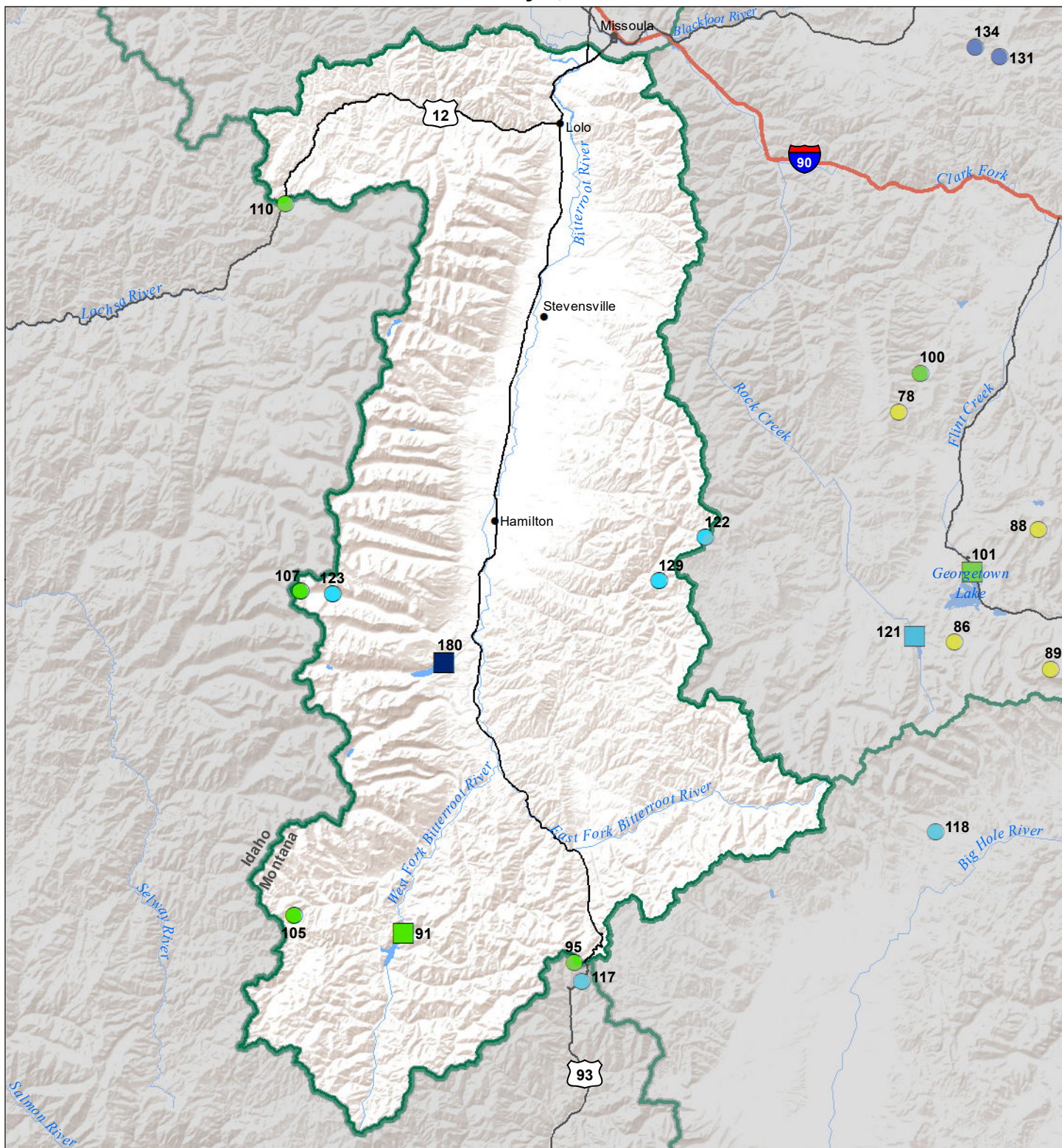


Bitterroot River Basin

Water Year to Date Precipitation and Reservoir Levels Percentage of Normal

January 1, 2021



Precipitation Percent of Normal	
SNOTEL	COOP/ACIS
<ul style="list-style-type: none"> ● > 150% ● 131 - 150% ● 111 - 130% ● 91 - 110% 	<ul style="list-style-type: none"> ● 71 - 90% ● 51 - 70% ● 1 - 50%
<ul style="list-style-type: none"> ● > 150% ● 131 - 150% ● 111 - 130% ● 91 - 110% 	<ul style="list-style-type: none"> ● 71 - 90% ● 51 - 70% ● 1 - 50%

Reservoirs Percent of Normal
■ > 150%
■ 131 - 150%
■ 111 - 130%
■ 91 - 110%
■ 71 - 90%
■ 51 - 70%
■ 1 - 50%

