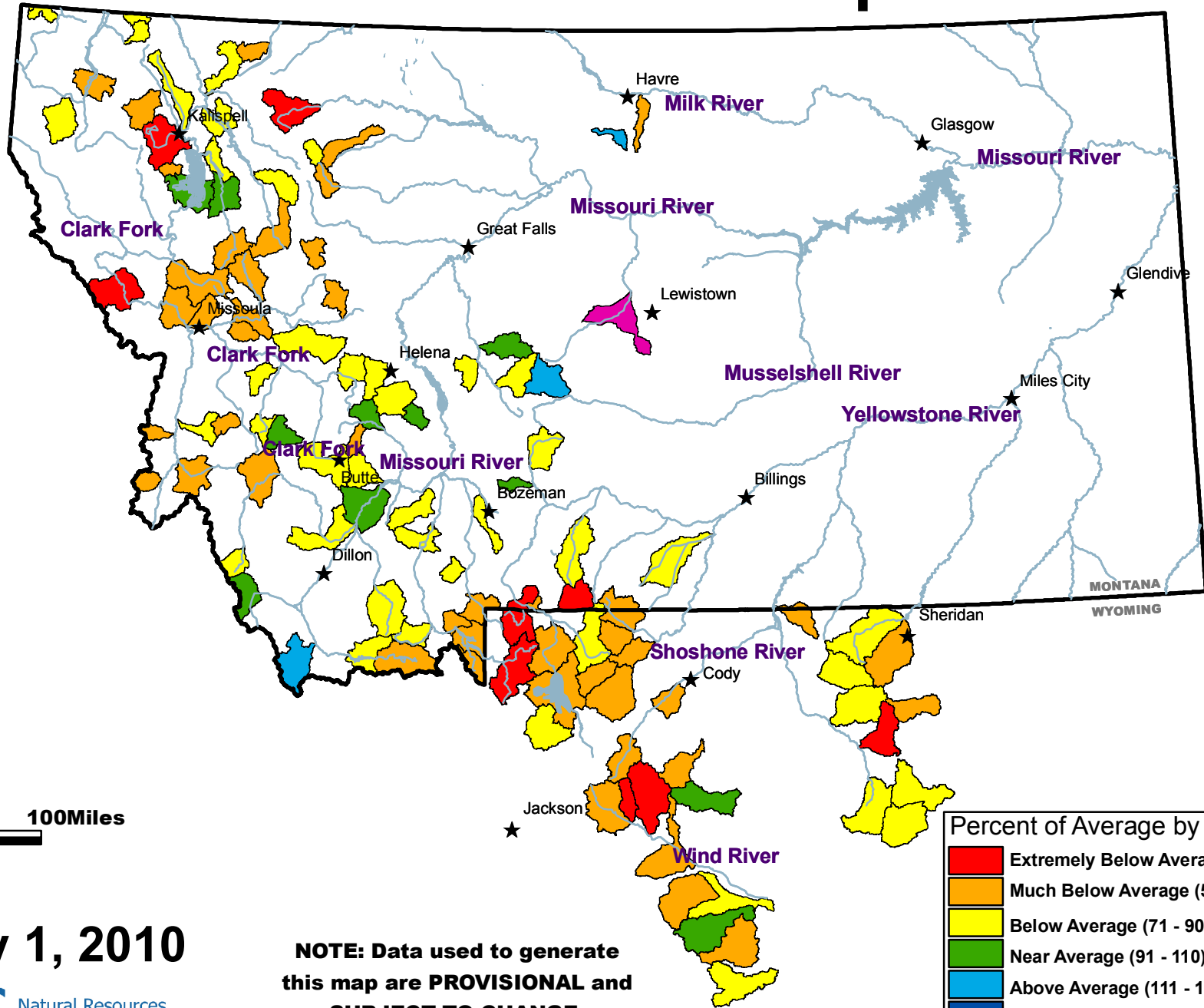


# Mountain Snow Water Equivalent



0 50 100 Miles

Percent of Average by Sub-Basin

- Extremely Below Average (Below 51)
- Much Below Average (51 - 70)
- Below Average (71 - 90)
- Near Average (91 - 110)
- Above Average (111 - 130)
- Much Above Average (131 - 150)
- Extremely Above Average (Over 150)

February 1, 2010

**NOTE: Data used to generate this map are PROVISIONAL and SUBJECT TO CHANGE.**