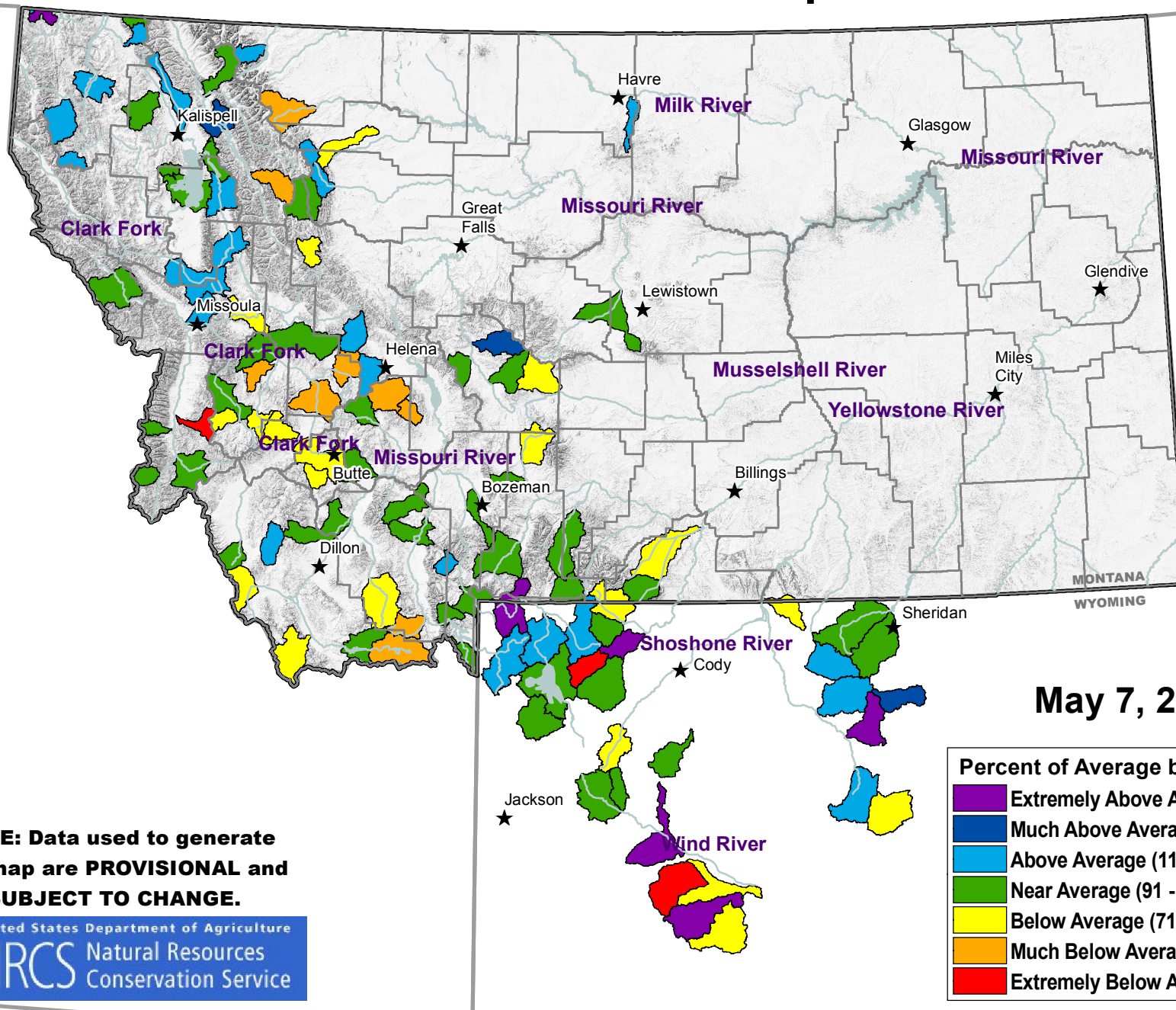


Mountain Snow Water Equivalent



May 7, 2013

Percent of Average by Sub-Basin	
■	Extremely Above Average (Over 150)
■	Much Above Average (131 - 150)
■	Above Average (111 - 130)
■	Near Average (91 - 110)
■	Below Average (71 - 90)
■	Much Below Average (51 - 70)
■	Extremely Below Average (Below 51)

NOTE: Data used to generate this map are PROVISIONAL and SUBJECT TO CHANGE.