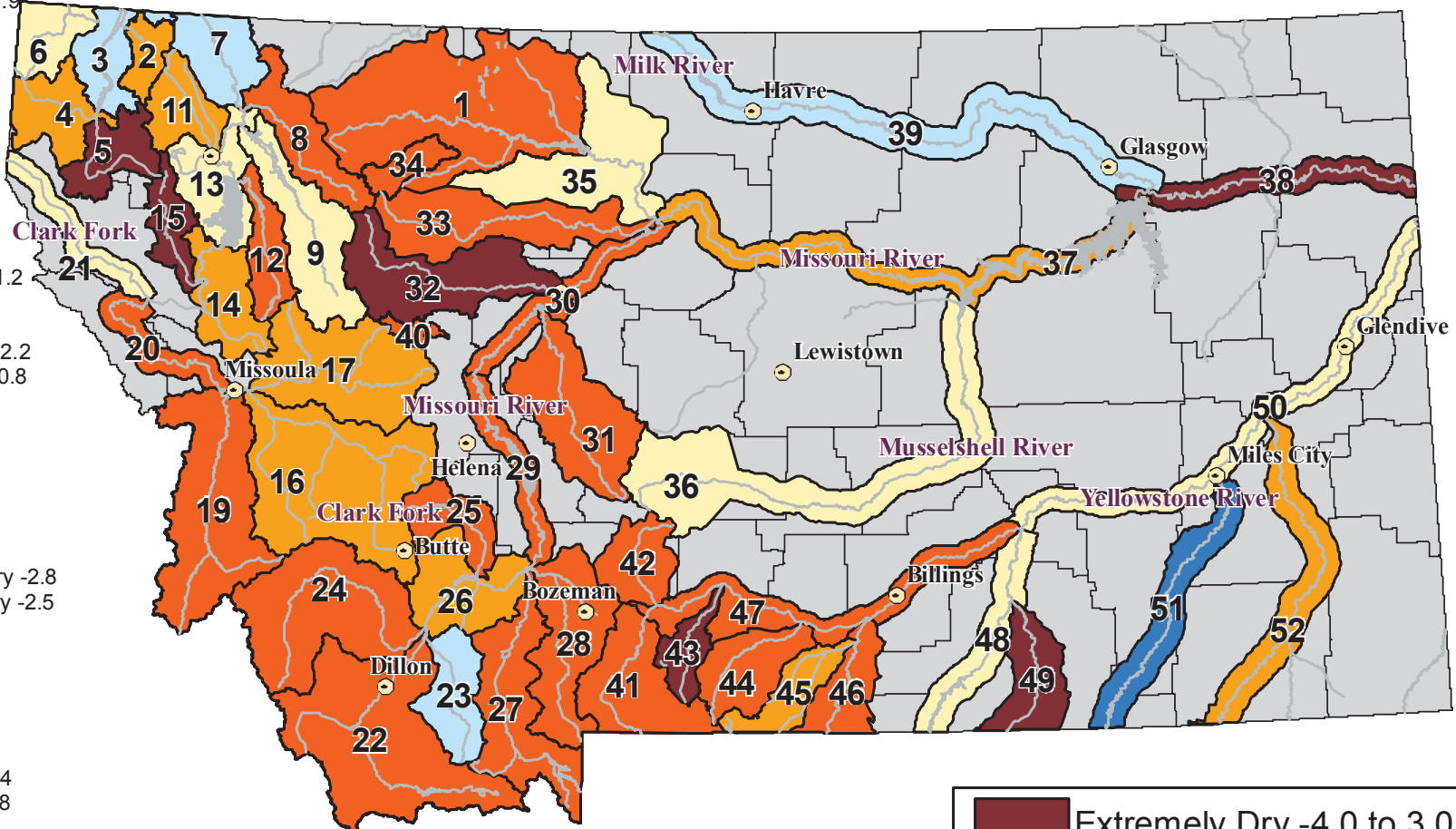


RIVER INDEX & SWSI VALUES

Surface Water Supply Index (SWSI) Values

UNITED STATES DEPARTMENT OF AGRICULTURE NATURAL RESOURCES CONSERVATION SERVICE

- 1 Marias above Tiber Reservoir -2.4
- 2 Tobacco -1.8
- 3 Kootenai Ft. Steele to Libby Dam 1.1
- 4 Kootenai below Libby Dam -1.9
- 5 Fisher -3.6
- 6 Yaak -0.7
- 7 North FK. Flathead 1.1
- 8 Middle FK. Flathead -2.2
- 9 South FK. Flathead -0.8
- 11 Stillwater/Whitefish -1.7
- 12 Swan -2.6
- 13 Flathead at Polson -0.1
- 14 Mission Valley -1.3
- 15 Little Bitterroot -3.3
- 16 Clark Fork above Milltown -1.2
- 17 Blackfoot -1.9
- 19 Bitterroot -2.9
- 20 Clark Fork below Bitterroot -2.2
- 21 Clark Fork below Flathead -0.8
- 22 Beaverhead -2.5
- 23 Ruby 1.3
- 24 Big Hole -2
- 25 Boulder (Jefferson) -2.1
- 26 Jefferson -1.2
- 27 Madison -2.2
- 28 Gallatin -2.7
- 29 Missouri above Canyon Ferry -2.8
- 30 Missouri below Canyon Ferry -2.5
- 31 Smith -2.3
- 32 Sun -3.1
- 33 Teton -2.4
- 34 Birch/Dupuyer Creeks -2.4
- 35 Marias 0.2
- 36 Musselshell -0.9
- 37 Missouri above Fort Peck -1.4
- 38 Missouri below Fort Peck -3.8
- 39 Milk 1.1
- 40 Dearborn near Craig -2.6
- 41 Yellowstone above Livingston -2
- 42 Shields -2.6
- 43 Boulder (Yellowstone) -3.3
- 44 Stillwater -2.9
- 45 Rock/Red Lodge Creeks -1.8
- 46 Clarks Fork -2.6
- 47 Yellowstone above Bighorn -2.3
- 48 Bighorn below Bighorn Lake -0.5
- 49 Little Bighorn -3.4
- 50 Yellowstone below Bighorn -0.8
- 51 Tongue 3.7
- 52 Powder -1.6



**Current as of
October 1, 2005**



NOTE: Data used to generate this map are PROVISIONAL and SUBJECT TO CHANGE.

NRCS Natural Resources Conservation Service
<http://www.mt.nrcs.usda.gov>

