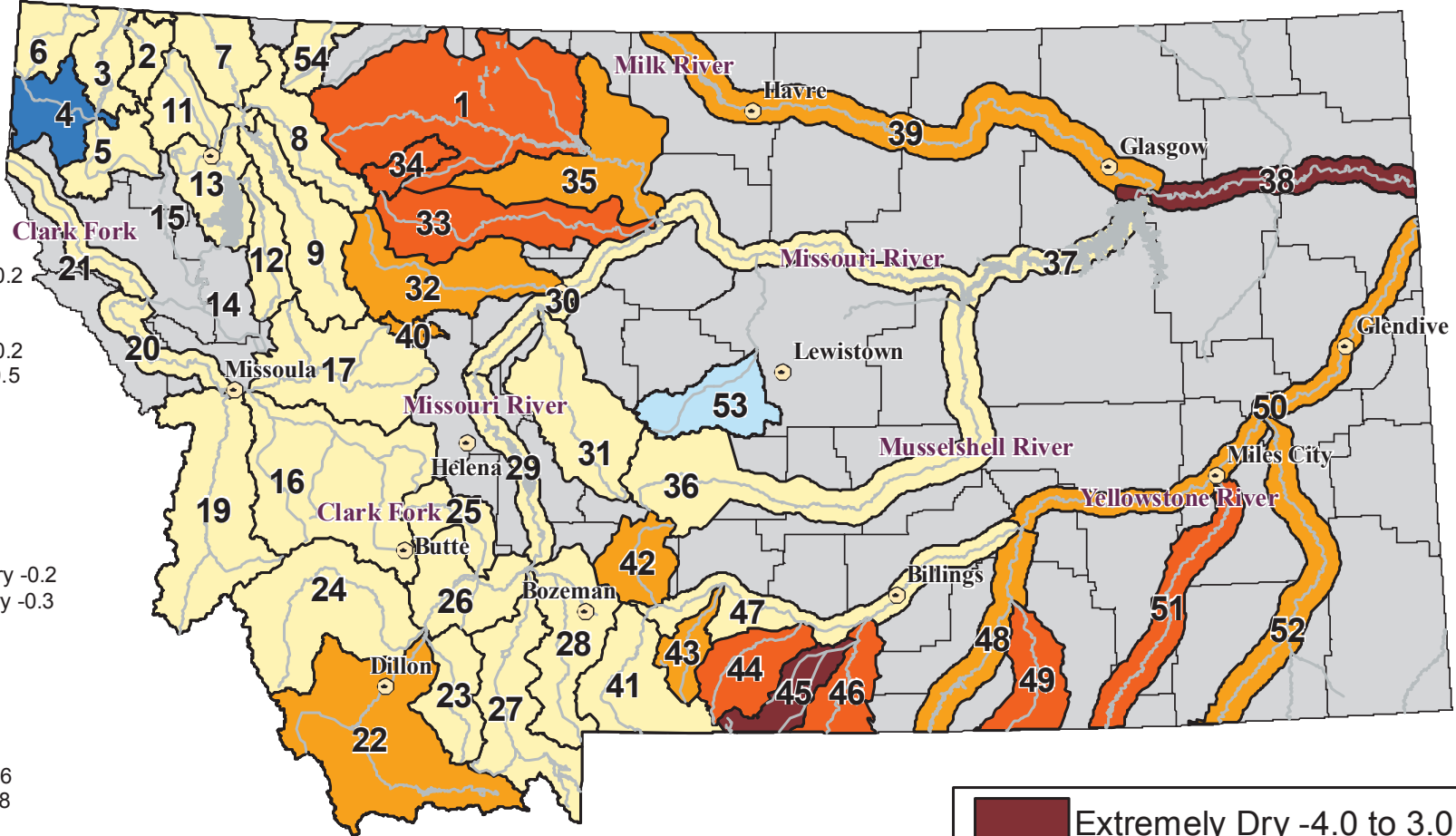


RIVER INDEX & SWSI VALUES

Surface Water Supply Index (SWSI) Values

UNITED STATES DEPARTMENT OF AGRICULTURE NATURAL RESOURCES CONSERVATION SERVICE

- 1 Marias above Tiber Reservoir -2
- 2 Tobacco -0.2
- 3 Kootenai Ft. Steele to Libby Dam 0.8
- 4 Kootenai below Libby Dam 3
- 5 Fisher 0.9
- 6 Yaak 0.9
- 7 North FK. Flathead 0.5
- 8 Middle FK. Flathead -0.4
- 9 South FK. Flathead 0
- 11 Stillwater/Whitefish 0.6
- 12 Swan 0.3
- 13 Flathead at Polson 0.6
- 14 Mission Valley
- 15 Little Bitterroot
- 16 Clark Fork above Milltown -0.2
- 17 Blackfoot 0.2
- 19 Bitterroot 0.5
- 20 Clark Fork below Bitterroot 0.2
- 21 Clark Fork below Flathead 0.5
- 22 Beaverhead -1.2
- 23 Ruby 0.5
- 24 Big Hole 0.4
- 25 Boulder (Jefferson) 0
- 26 Jefferson 0.4
- 27 Madison 0.5
- 28 Gallatin 0.5
- 29 Missouri above Canyon Ferry -0.2
- 30 Missouri below Canyon Ferry -0.3
- 31 Smith -0.6
- 32 Sun -1
- 33 Teton -2
- 34 Birch/Dupuyer Creeks -2.9
- 35 Marias -1.3
- 36 Musselshell -0.1
- 37 Missouri above Fort Peck -0.6
- 38 Missouri below Fort Peck -3.8
- 39 Milk -1.1
- 40 Dearborn near Craig -1.6
- 41 Yellowstone above Livingston 0.3
- 42 Shields -1.2
- 43 Boulder (Yellowstone) -1.7
- 44 Stillwater -2.1
- 45 Rock/Red Lodge Creeks -3.7
- 46 Clarks Fork -2
- 47 Yellowstone above Bighorn -0.6
- 48 Bighorn below Bighorn Lake -1.7
- 49 Little Bighorn -2.9
- 50 Yellowstone below Bighorn -1.1
- 51 Tongue -2.9
- 52 Powder -1.3
- 53 Upper Judith River 1.5
- 54 Saint Mary River -0.1



Current as of
June 1, 2006



NOTE: Data used to generate this map are PROVISIONAL and SUBJECT TO CHANGE.

NRCS Natural Resources Conservation Service
<http://www.mt.nrcs.usda.gov>

