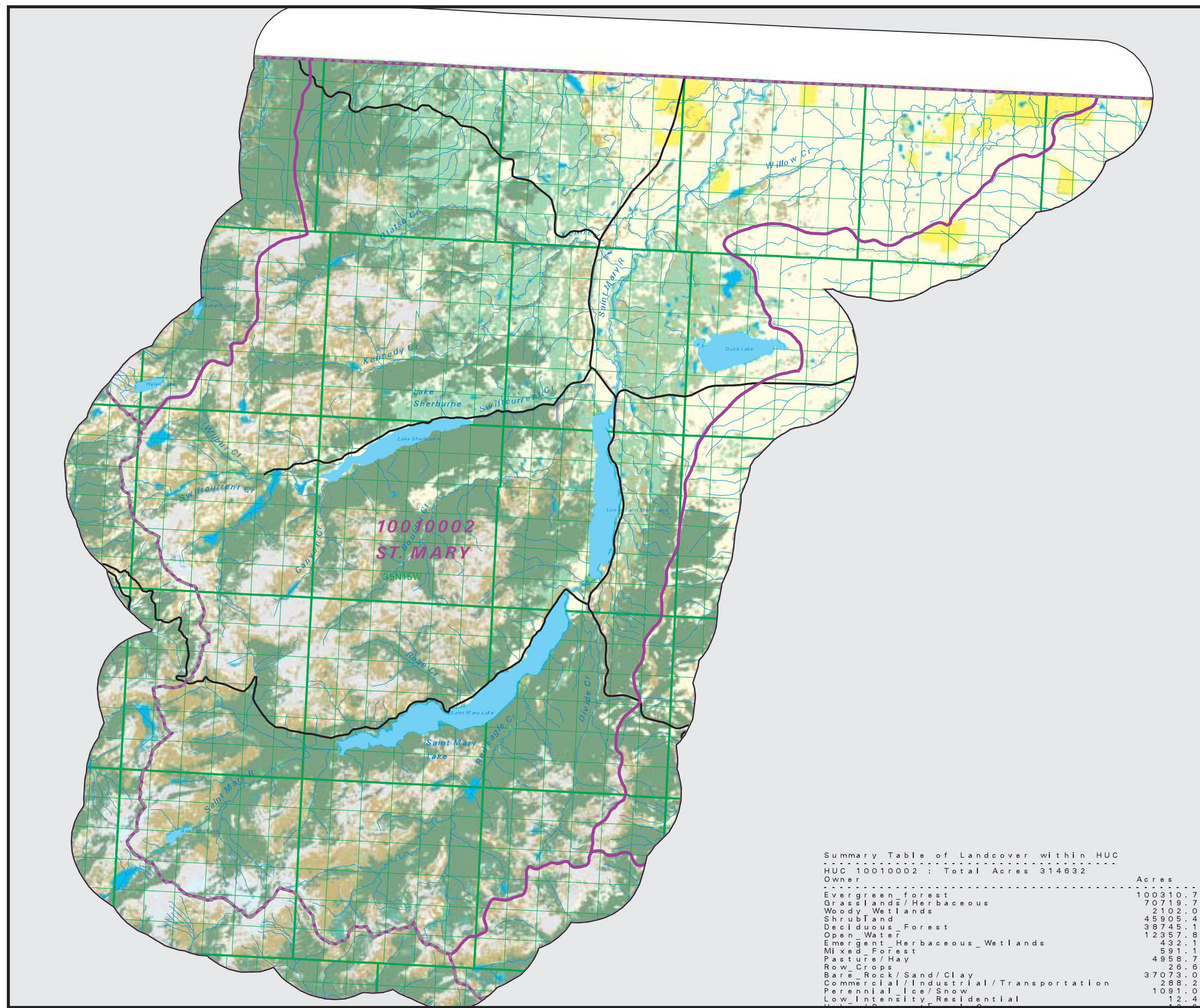


ST. MARY

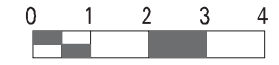
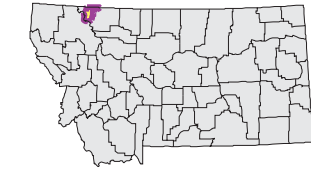
Watershed National Land Cover Database



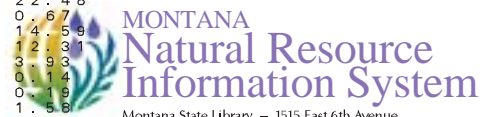
- County Border
- Highway
- Public Land Survey System Townships
- Fourth Code Watersheds
- Open Water
- Perennial Ice/Snow
- Low Intensity Residential
- High Intensity Residential
- Commercial/Industrial Transportation
- Bare Rock/Sand/Clay
- Deciduous Forest
- Evergreen Forest
- Mixed Forest
- Shrubland
- Grasslands/Herbaceous
- Pasture/Hay
- Row Crops
- Small Grains
- Fallow
- Urban/Recreational Grasses
- Woody Wetlands
- Emergent Herbaceous Wetlands

SOURCE:
US Geological Survey NLCD files.
Data from 30-meter Landsat thematic mapper (TM), 1986-1995.
This data is intended to display land use patterns, rather than identification of the land use at any particular point.
The source data being in raster format, no attempt has been made to summarize the types or limit the legend to the displayed data.

This map is to be used as a primary reference source and is not intended for use in site - specific planning. This is public information and may be interpreted by organizations, agencies, units of government, or others, based on needs; however, they are responsible for the appropriate application. Federal, State, or local regulatory bodies are not to reassign to the Natural Resource Information System any authority for the decisions they make.



Mapscale 1: 210000, Scale in miles:



Montana State Library - 1515 East 6th Avenue
Helena, Montana - (406) 444-5357

Date created: November 10, 2003
Map Request: 04MSL0001 - 10010002 - NLCD

Summary Table of Landcover within HUC		
HUC 10010002 : Total Acres 314632		
Owner	Acres	Percent
Evergreen forest	100310.76	31.88
Grasslands/Herbaceous	70719.79	22.48
Woody Wetlands	2102.08	0.67
Shrubland	45905.41	14.59
Deciduous Forest	38745.19	12.31
Open Water	12357.82	3.93
Emergent Herbaceous Wetlands	432.11	0.14
Mixed Forest	591.13	0.19
Pasture/Hay	4958.74	1.58
Row Crops	26.69	0.01
Bare Rock/Sand/Clay	37073.00	11.78
Commercial/Industrial/Transportation	288.22	0.09
Perennial Ice/Snow	1091.07	0.35
Low Intensity Residential	12.45	0.00
High Intensity Residential	4.23	0.00
Acres =	314631.57	