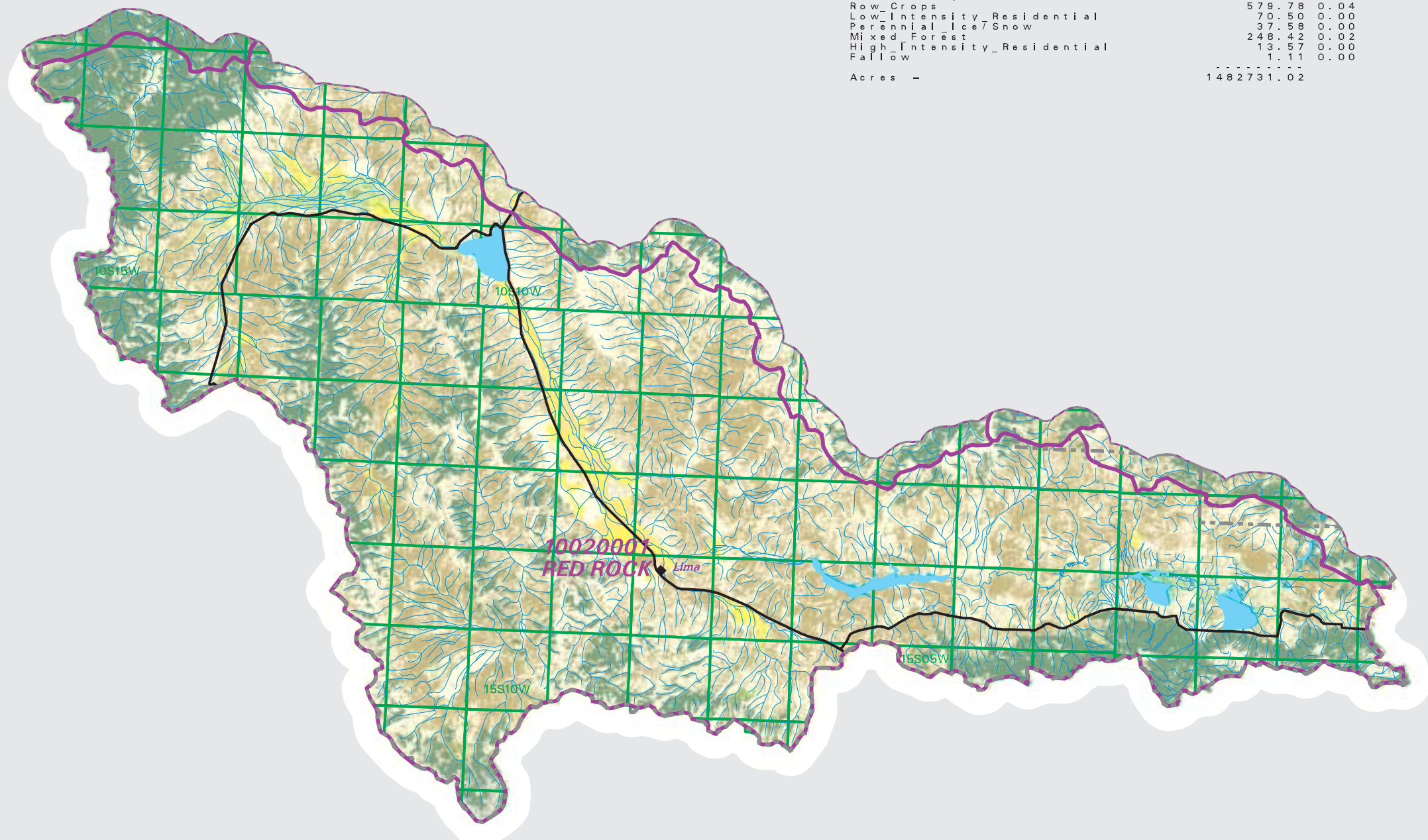


# RED ROCK Watershed

## National Land Cover Database

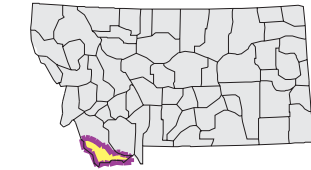
Summary Table of Landcover within HUC		
-----		
HUC 10020001 : Total Acres 1482731		
Owner	Acres	Percent
-----		
Evergreen_forest	240070.14	16.19
Shrubland	545394.49	36.78
Grasslands/Herbaceous	589491.17	39.76
Deciduous_Forest	2555.54	0.17
Commercial/Industrial/Transportation	1379.29	0.09
Bare_Rock/Sand/Clay	5299.45	0.36
Transitional	1711.11	0.12
Emergent_Herbaceous_Wetlands	17902.34	1.21
Woody_Wetlands	15107.95	1.02
Open_Water	15693.52	1.06
Urban/Recreational_Grasses	37.81	0.00
	6.89	0.00
Small_Grains	11367.05	0.77
Pasture/Hay	35763.32	2.41
Row_Crops	579.78	0.04
Low_Intensity_Residential	70.50	0.00
Perennial_Ice/Snow	37.58	0.00
Mixed_Forest	248.42	0.02
High_Intensity_Residential	13.57	0.00
Fallow	1.11	0.00
	-----	-----
Acres =	1482731.02	

- County Border
- Highway
- Public Land Survey System Townships
- Fourth Code Watersheds
- Open Water
- Perennial Ice/Snow
- Low Intensity Residential
- High Intensity Residential
- Commercial/Industrial Transportation
- Bare Rock/Sand/Clay
- Quarries/Strip Mines Gravel Pits
- Transitional
- Deciduous Forest
- Evergreen Forest
- Mixed Forest
- Shrubland
- Grasslands/Herbaceous
- Pasture/Hay
- Row Crops
- Small Grains
- Fallow
- Urban/Recreational Grasses
- Woody Wetlands
- Emergent Herbaceous Wetlands

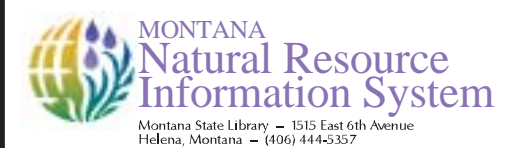


SOURCE:  
 US Geological Survey NLCD files.  
 Data from 30-meter Landsat thematic mapper (TM), 1986-1995.  
 This data is intended to display land use patterns, rather than identification of the land use at any particular point.  
 The source data being in raster format, no attempt has been made to summarize the types or limit the legend to the displayed data.

This map is to be used as a primary reference source and is not intended for use in site - specific planning. This is public information and may be interpreted by organizations, agencies, units of government, or others, based on needs; however, they are responsible for the appropriate application. Federal, State, or local regulatory bodies are not to reassign to the Natural Resource Information System any authority for the decisions they make.



Mapscale 1: 600000, Scale in miles:



Date created: October 30, 2003  
 Map Request: 04MSL0001 - 10020001 - NLCD