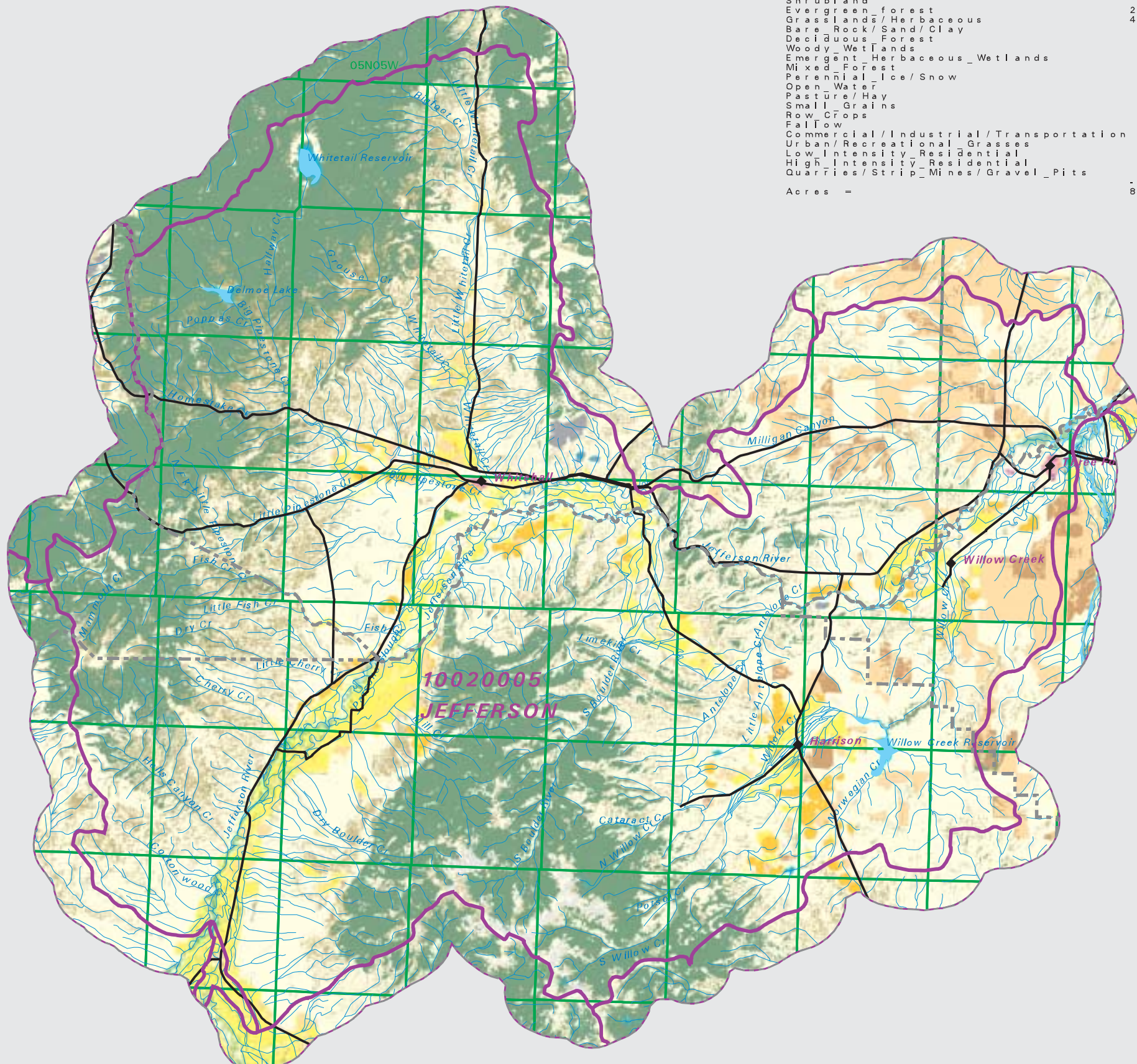


# JEFFERSON

## Watershed National Land Cover Database

Summary Table of Landcover within HUC  
 HUC 10020005 : Total Acres 855638

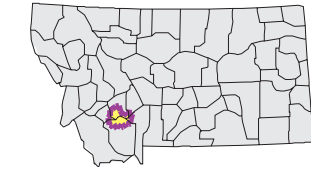
Owner	Acres	Percent
Shrubland	94144.64	11.00
Evergreen forest	219372.29	25.64
Grasslands/Herbaceous	420433.92	49.14
Bare Rock/Sand/Clay	3995.32	0.47
Deciduous Forest	2839.54	0.33
Woody Wetlands	305.13	0.04
Emergent Herbaceous Wetlands	223.73	0.03
Mixed Forest	10.45	0.00
Perennial Ice/Snow	3229.62	0.38
Open Water	37709.72	4.41
Pasture/Hay	44066.21	5.15
Small Grains	11345.03	1.33
Fallow	10405.86	1.22
Commercial/Industrial/Transportation	2005.56	0.23
Urban/Recreational Grasses	229.96	0.03
Low Intensity Residential	348.05	0.04
High Intensity Residential	1.33	0.00
Quarries/Strip Mines/Gravel Pits	1302.79	0.15
Acres =	855637.54	



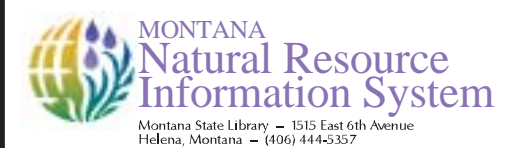
- County Border
- Highway
- Public Land Survey
- Fourth Code Watersheds
- Open Water
- Perennial Ice/Snow
- Low Intensity Residential
- High Intensity Residential
- Commercial/Industrial Transportation
- Bare Rock/Sand/Clay
- Quarries/Strip Mines Gravel Pits
- Transitional
- Deciduous Forest
- Evergreen Forest
- Mixed Forest
- Shrubland
- Grasslands/Herbaceous
- Pasture/Hay
- Row Crops
- Small Grains
- Fallow
- Urban/Recreational Grasses
- Woody Wetlands
- Emergent Herbaceous Wetlands

SOURCE:  
 US Geological Survey NLCD files.  
 Data from 30-meter Landsat thematic mapper (TM), 1986-1995.  
 This data is intended to display land use patterns, rather than identification of the land use at any particular point.  
 The source data being in raster format, no attempt has been made to summarize the types or limit the legend to the displayed data.

This map is to be used as a primary reference source and is not intended for use in site - specific planning. This is public information and may be interpreted by organizations, agencies, units of government, or others, based on needs; however, they are responsible for the appropriate application. Federal, State, or local regulatory bodies are not to reassign to the Natural Resource Information System any authority for the decisions they make.



Mapscale 1: 350000, Scale in miles:



Date created: October 28, 2003  
 Map Request: 04MSL0001 - 10020005 - NLCD