

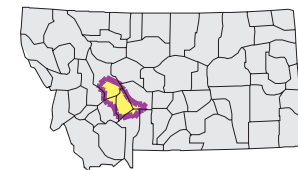
UPPER MISSOURI  
Watershed

National Land Cover Database

- County Border
- Highway
- Public Land Survey System Townships
- Fourth Code Watersheds
- Open Water
- Perennial Ice/Snow
- Low Intensity Residential
- High Intensity Residential
- Commercial/Industrial Transportation
- Bare Rock/Sand/Clay
- Quarries/Strip Mines Gravel Pits
- Transitional
- Deciduous Forest
- Evergreen Forest
- Mixed Forest
- Shrubland
- Grasslands/Herbaceous
- Pasture/Hay
- Row Crops
- Small Grains
- Fallow
- Urban/Recreational Grasses
- Woody Wetlands
- Emergent Herbaceous Wetlands

SOURCE:  
US Geological Survey NLCD files.  
Data from 30-meter Landsat thematic mapper (TM), 1986-1995.  
This data is intended to display land use patterns, rather than identification of the land use at any particular point.  
The source data being in raster format, no attempt has been made to summarize the types or limit the legend to the displayed data.

This map is to be used as a primary reference source and is not intended for use in site - specific planning. This is public information and may be interpreted by organizations, agencies, units of government, or others, based on needs; however, they are responsible for the appropriate application. Federal, State, or local regulatory bodies are not to reassign to the Natural Resource Information System any authority for the decisions they make.



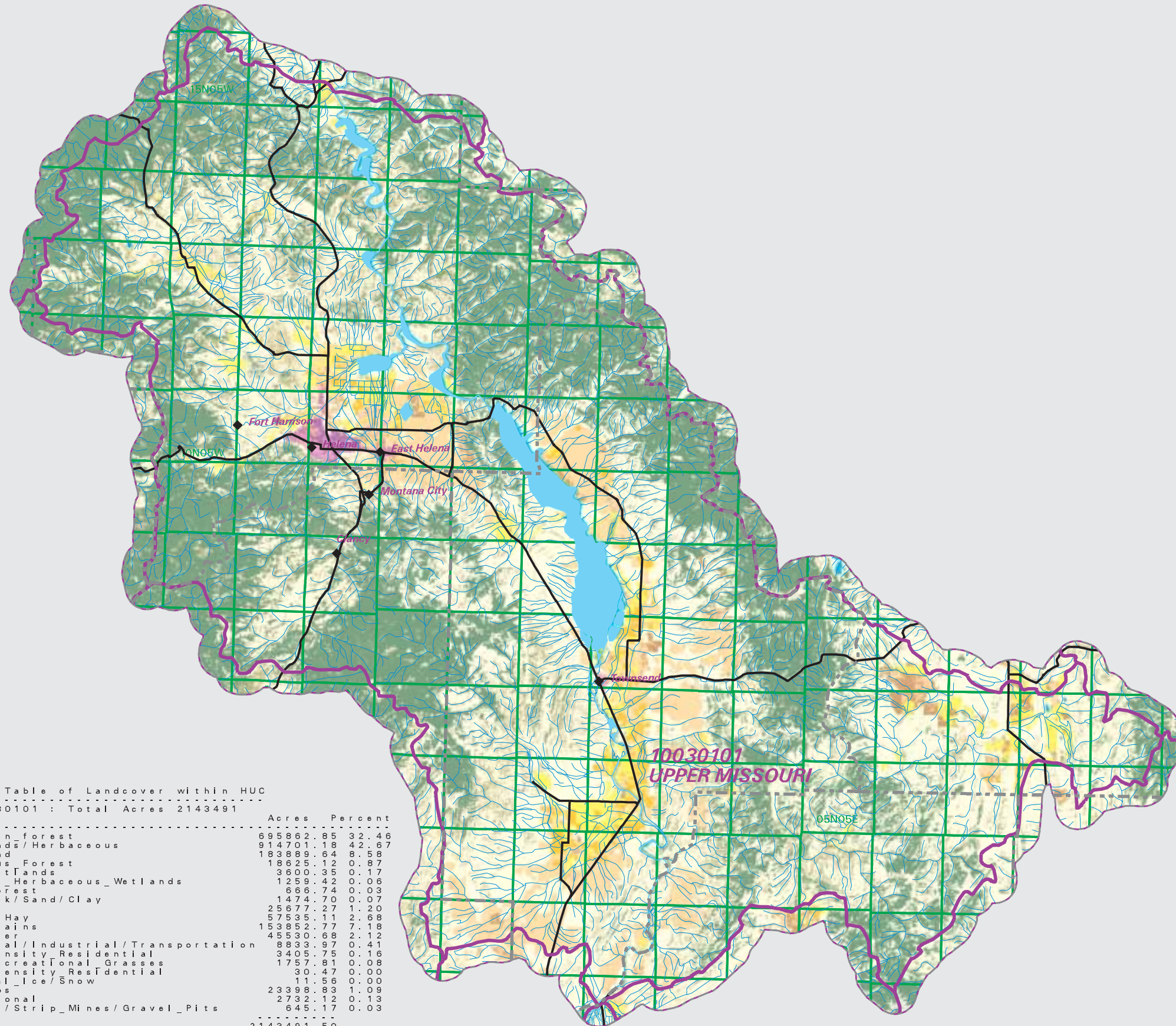
Mapscale 1: 600000, Scale in miles:



Montana State Library - 1515 East 6th Avenue  
Helena, Montana - (406) 444-5357

Date created: November 01, 2003

Map Request: 04MSL0001 - 10030101 - NLCD



Summary Table of Landcover within HUC  
-----  
HUC 10030101 : Total Acres 2143491  
Owner

	Acres	Percent
Evergreen_forest	695862.85	32.46
Grasslands/Herbaceous	914701.18	42.67
Shrubland	183889.64	8.58
Deciduous Forest	18625.12	0.87
Woody Wetlands	3600.35	0.17
Emergent_Herbaceous_Wetlands	1259.42	0.06
Mixed Forest	686.74	0.03
Bare Rock/Sand/Clay	1474.70	0.07
Fallow	25677.27	1.20
Pasture/Hay	57535.11	2.68
Small Grains	153852.77	7.18
Open Water	45530.68	2.12
Commercial/Industrial/Transportation	8833.97	0.41
Low Intensity Residential	3405.75	0.16
Urban/Recreational Grasses	1757.81	0.08
High Intensity Residential	30.47	0.00
Perennial Ice/Snow	11.56	0.00
Row Crops	23398.83	1.09
Transitional	2732.12	0.13
Quarries/Strip Mines/Gravel_Pits	645.17	0.03
Acres =	2143491.50	